

ACI Racing Weekend Mugello 01-04 Ottobre 2020

Formula Regional European Championship - Results FP 2

Aut. Int. Mugello Auto 5.245 m

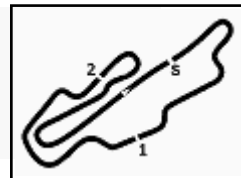
No. Driver	Nat	Entrant	Team	Car	Class	Time	Gap	Rel. Laps
1 6 RASMUSSEN Oliver	DEN	Prema Powerteam	Prema Powerteam	F3 Tatuus 318 A.R.	R	1'41.580		18
2 14 LECLERC Arthur	MON	Prema Powerteam	Prema Powerteam	F3 Tatuus 318 A.R.	R	1'41.636	0.056	0.056 17
3 10 PETECOF Gianluca	BRA	Prema Powerteam	Prema Powerteam	F3 Tatuus 318 A.R.	R	1'41.699	0.119	0.063 18
4 3 CHOVET Pierre Louis	FRA	Van Amersfoort Racing	Van Amersfoort Racing	F3 Tatuus 318 A.R.	R	1'42.255	0.675	0.556 16
5 4 VIPS Juri	EST	KIC Motorsport	KIC Motorsport	F3 Tatuus 318 A.R.		1'42.314	0.734	0.059 17
6 5 PASMA Patrick	FIN	KIC Motorsport	KIC Motorsport	F3 Tatuus 318 A.R.		1'42.357	0.777	0.043 13
7 40 LAPPALAINEN Konsta	FIN	KIC Motorsport	KIC Motorsport	F3 Tatuus 318 A.R.		1'42.537	0.957	0.180 17
8 11 FAMULARO Alessandro	VEN	Van Amersfoort Racing	Van Amersfoort Racing	F3 Tatuus 318 A.R.	R	1'42.789	1.209	0.252 14
9 55 CHADWICK Jamie Laura	GBR	Prema Powerteam	Prema Powerteam	F3 Tatuus 318 A.R.		1'43.104	1.524	0.315 16
10 41 PESCE Emilio	ITA	DR Formula RP Motorsport	DR Formula RP Motorsport	F3 Tatuus 318 A.R.	R	1'43.849	2.269	0.745 14
11 33 HENRION Gillian	FRA	Henrion Samuel GTE	Gillian Track Events GTE	F3 Tatuus 318 A.R.	R	1'44.530	2.950	0.681 19
12 99 COLA Andrea	ITA	Monolite Racing	Monolite Racing	F3 Tatuus 318 A.R.	R	1'45.584	4.004	1.054 14

Humidity:	65%	Air:	20°C
Condition:	DRY	Temp:	22°C

Race Director : Alessandro Ferrari

Clerk of the Course : Antonio Canu

02/10/2020 Start End
15:09 15:51



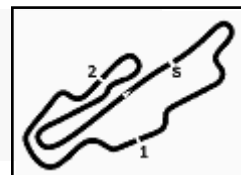
ACI Racing Weekend Mugello 01-04 Ottobre 2020

Formula Regional European Championship - Ideal Times FP 2

Aut. Int. Mugello Auto 5.245 m

No.	Driver	Car	Seg. 1	Seg. 2	Seg. 3	Ideal Time			
			Diff. 1	Diff. 2	Diff. 3	Best Lap	Pos.	Diff.	
1	6 RASMUSSEN O. (DEN)	F3 Tatuus 318 A.R.	34.958	29.715 +0.099	36.786 +0.022	1'41.459 1'41.580	1	0.121	
2	14 LECLERC A. (MON)	F3 Tatuus 318 A.R.	34.973	29.846	36.676 +0.141	1'41.495 1'41.636	2	0.141	
3	10 PETECOF G. (BRA)	F3 Tatuus 318 A.R.	35.182	29.815	36.609 +0.093	1'41.606 1'41.699	3	0.093	
4	3 CHOVET P. (FRA)	F3 Tatuus 318 A.R.	35.214	30.089	36.835 +0.117	1'42.138 1'42.255	4	0.117	
5	4 VIPS J. (EST)	F3 Tatuus 318 A.R.	35.283	29.974	36.988 +0.069	1'42.245 1'42.314	5	0.069	
6	5 PASMA P. (FIN)	F3 Tatuus 318 A.R.	35.346	30.115	36.833 +0.063	1'42.294 1'42.357	6	0.063	
7	40 LAPPALAINEN K. (FIN)	F3 Tatuus 318 A.R.	35.314 +0.048	30.151	37.024	1'42.489 1'42.537	7	0.048	
8	11 FAMULARO A. (VEN)	F3 Tatuus 318 A.R.	35.380 +0.206	30.264	36.939	1'42.583 1'42.789	8	0.206	
9	55 CHADWICK J. (GBR)	F3 Tatuus 318 A.R.	35.535	30.339	37.097 +0.133	1'42.971 1'43.104	9	0.133	
10	41 PESCE E. (ITA)	F3 Tatuus 318 A.R.	35.761	30.656	37.332 +0.100	1'43.749 1'43.849	10	0.100	
11	33 HENRION G. (FRA)	F3 Tatuus 318 A.R.	36.068 +0.097	31.054	37.311	1'44.433 1'44.530	11	0.097	
12	99 COLA A. (ITA)	F3 Tatuus 318 A.R.	36.823	31.216	37.545	1'45.584 1'45.584	12		
Overall Ideal Time			34.958	34.958	29.715	36.609	1'41.282		

02/10/2020



ACI Racing Weekend Mugello 01-04 Ottobre 2020

Formula Regional European Championship - Analysis FP 2

Aut. Int. Mugello Auto 5.245 m

1 / 2

3 P. CHOVET (1'42.255)

Lap	Seg.1	Seg.2	Seg.3	Lap Time	km/h	Local Time
1	43.464	36.522	1'11.230	2'31.216P	167,7	15:10'20.030
2	40.503	31.799	1'08.578	2'20.880P	172,5	15:15'12.126
3	39.158	31.333	37.526	1'48.017P	174,8	15:17'00.143
4	36.128	30.797	37.618	1'44.543	240,5	15:18'44.686
5	39.604	36.813	38.134	1'54.551	240,0	15:20'39.237
6	36.393	31.007	10'01.354	11'08.754P	240,5	15:31'47.991
7	50.189	40.961	41.232	2'12.382P	135,5	15:34'00.373
8	41.533	35.439	38.350	1'55.322	235,8	15:35'55.695
9	37.516	32.561	38.335	1'48.412	240,5	15:37'44.107
10	35.351	30.155	36.835	1'42.341	240,5	15:39'26.448
11	35.214	30.089	36.952	1'42.255	241,1	15:41'08.703
12	35.361	34.105	47.024	1'56.490	241,6	15:43'05.193
13	35.497	30.112	36.943	1'42.552	241,1	15:44'47.745
14	35.232	56.889	1'50.158	3'22.279	241,6	15:48'10.024
15	39.121	30.848	37.230	1'47.199	198,2	15:49'57.223
16	35.483	30.239	36.976	1'42.698	239,5	15:51'39.921

1	45.854					1'27.484P	165,4	15:11'38.259	
2	42.070	35.874				1'57.225P	171,4	15:13'35.484	
3	38.282	35.810				1'52.570	232,8	15:15'28.054	
4	35.768	30.465				1'43.517	240,0	15:17'11.571	
5	35.709	30.395				1'43.373	240,0	15:18'54.944	
6	44.029	40.638				2'06.004	193,5	15:21'00.948	
7	36.212	31.731				1'45.598	239,5	15:22'46.546	
8	35.850	30.582				1'43.652	240,5	15:24'30.198	
9	36.318					7'11.123P	241,1	15:31'41.321	
10	51.435					1'34.157P	130,6	15:33'15.478	
11	46.191	38.631				2'05.038P	163,9	15:35'20.516	
12	39.630	34.333				1'52.404	216,0	15:37'12.920	
13	35.339	30.024				1'42.322	241,6	15:38'55.242	
14	34.958	29.814				36.808	1'41.580	241,6	15:40'36.822
15	41.583	36.688				38.051	1'56.322	216,0	15:42'33.144
16	35.080	29.715	36.786			1'41.581	240,5	15:44'14.725	
17	41.736	40.175				1'29.599	2'51.510	240,5	15:47'06.235
18	1'14.045	32.871				38.247	2'25.163	74,7	15:49'31.398

4 J. VIPS (1'42.314)

Lap	Seg.1	Seg.2	Seg.3	Lap Time	km/h	Local Time
1	48.665	35.260	1'12.240	2'36.165P	140,3	15:11'07.265
2	41.081	32.437	38.352	1'51.870P	172,5	15:15'35.300
3	37.845	31.741	38.138	1'47.724	227,4	15:17'23.024
4	35.838	30.448	37.284	1'43.570	237,9	15:19'06.594
5	35.848	30.346	37.181	1'43.375	238,4	15:20'49.969
6	35.835	30.447	37.237	1'43.519	238,4	15:22'33.488
7	35.918	30.384	37.384	1'43.686	238,9	15:24'17.174
8	35.666	30.368	37.344	1'43.378	240,0	15:26'00.552
9	38.158			8'55.633P	238,4	15:34'56.185
10	53.160	38.070	41.192	2'12.422P	125,4	15:37'08.607
11	41.462	35.496	38.840	1'55.798	229,8	15:39'04.405
12	37.929	32.061	37.563	1'47.553	235,8	15:40'51.958
13	35.339	31.308	37.617	1'44.264	238,4	15:42'36.222
14	35.283	29.974	37.057	1'42.314	239,5	15:44'18.536
15	42.346	42.838	1'32.956	2'58.140	240,0	15:47'16.676
16	1'09.655	32.251	37.601	2'19.507	71,0	15:49'36.183
17	35.321	30.103	36.988	1'42.412	240,0	15:51'18.595

10 G. PETECOF (1'41.699)

Lap	Seg.1	Seg.2	Seg.3	Lap Time	km/h	Local Time
1	45.512	36.952	1'12.754	2'35.218P	166,4	15:13'34.515
2	44.546	36.922	44.193	2'05.661P	137,8	15:15'40.176
3	42.694	37.780	37.767	1'58.241	240,5	15:17'38.417
4	35.936	30.603	37.216	1'43.755	240,5	15:19'22.172
5	44.408	39.725	38.023	2'02.156	240,5	15:21'24.328
6	35.937	38.280	52.492	2'06.709	239,5	15:23'31.037
7	35.852	30.736	37.214	1'43.802	238,9	15:25'14.839
8	35.775	30.464	37.168	1'43.407	240,5	15:26'58.246
9	37.735			5'27.930P	241,1	15:32'26.176
10	54.761	40.322	44.426	2'19.509P	113,6	15:34'45.685
11	43.656	37.407	39.761	2'00.824	214,3	15:36'46.509
12	39.047	36.968	39.057	1'55.072	236,8	15:38'41.581
13	35.412	29.926	36.891	1'42.229	240,0	15:40'23.810
14	35.182	29.815	36.702	1'41.699	241,1	15:42'05.509
15	43.254	36.941	37.784	1'57.979	241,1	15:44'03.488
16	35.335	30.085	50.007	1'55.427	242,2	15:45'58.915
17	1'09.655	32.251	37.601	2'19.507	71,0	15:49'36.183
18	35.333	29.901	36.609	1'41.843	240,5	15:50'45.653

5 P. PASMA (1'42.357)

Lap	Seg.1	Seg.2	Seg.3	Lap Time	km/h	Local Time
1	43.937	35.980	39.165	1'59.082P	163,4	15:12'17.892
2	38.594	33.028	38.541	1'50.163	232,8	15:14'08.055
3	36.073	30.888	37.243	1'44.204	241,1	15:15'52.259
4	36.905	36.723	1'08.057	2'21.685P	242,2	15:18'13.944
5	40.228			13'44.785P	174,5	15:31'58.729
6	52.075	38.664	40.741	2'11.480P	152,1	15:34'10.209
7	39.984	34.569	39.325	1'53.878	232,3	15:36'04.087
8	37.876	34.496	37.756	1'50.128	234,8	15:37'54.215
9	35.478	30.204	36.833	1'42.515	241,1	15:39'36.730
10	35.437	35.116	37.569	1'48.122	241,6	15:41'24.852
11	35.346	30.115	36.896	1'42.357	241,1	15:43'07.209
12	41.002	37.267	37.347	1'55.616	241,6	15:45'02.825
13	35.666			3'23.276P	241,1	15:48'26.101

11 A. FAMULARO (1'42.789)

Lap	Seg.1	Seg.2	Seg.3	Lap Time	km/h	Local Time
1	44.344	34.906	1'22.604	2'41.854P	163,4	15:13'04.403
2	40.289	33.162	1'15.675	2'29.126P	173,1	15:15'33.529
3	41.140	32.228	38.098	1'51.466P	172,5	15:17'24.995
4	36.355	31.264	37.608	1'45.227	240,0	15:19'10.222
5	36.270	31.237	37.617	1'45.124	238,4	15:20'55.346
6	36.302	31.392	37.729	1'45.423	238,4	15:22'40.769
7	38.097			9'13.723P	238,9	15:31'54.492
8	52.808	37.608	40.289	2'10.705P	135,8	15:34'05.197
9	40.763	34.827	38.648	1'54.238	235,8	15:35'59.435
10	37.057	33.164	37.796	1'48.017	241,6	15:37'47.452
11	35.586	30.264	36.939	1'42.789	240,5	15:39'30.241
12	35.380	30.402	37.142	1'42.924	241,6	15:41'13.165
13	35.409	30.416	37.207	1'43.032	239,5	15:42'56.197
14	47.112	36.263	38.849	2'02.224	186,9	15:44'58.421

6 O. RASMUSSEN (1'41.580)

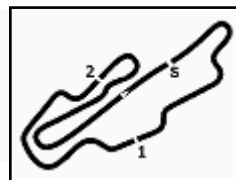
Lap	Seg.1	Seg.2	Seg.3	Lap Time	km/h	Local Time
1						15:10'10.775

14 A. LECLERC (1'41.636)

Lap	Seg.1	Seg.2	Seg.3	Lap Time	km/h	Local Time
1						

02/10/2020

P = Pits In/Out - C = Lap Time Cancelled



ACI Racing Weekend Mugello 01-04 Ottobre 2020

Formula Regional European Championship - Analysis FP 2

Aut. Int. Mugello Auto 5.245 m

Lap	Seg.1	Seg.2	Seg.3	Lap Time	km/h	Local Time
1	45.657	35.586	40.825	2'02.068P	162,2	15:10'11.884
2	37.839	32.525	38.013	1'48.377	226,9	15:12'13.952
3	36.405	30.952	37.248	1'44.605	236,8	15:14'02.329
4	36.089	30.770	37.409	1'44.268	240,0	15:15'46.934
5	42.580	36.641	40.081	1'59.302	238,4	15:17'31.202
6	36.201	30.851	37.288	1'44.340	237,4	15:19'30.504
7	36.037	30.733	37.212	1'43.982	238,9	15:21'14.844
8	36.862			8'12.654P	240,0	15:22'58.826
9	50.578			1'34.027P	131,5	15:31'11.480
10	45.145	37.179	40.231	2'02.555P	148,6	15:32'45.507
11	38.419	33.049	37.417	1'48.885	233,8	15:34'48.062
12	35.175	30.027	36.676	1'41.878	240,5	15:36'36.947
13	35.003	29.945	36.753	1'41.701	239,5	15:38'18.825
14	40.517	34.368	37.899	1'52.784	241,6	15:40'00.526
15	34.973	29.846	36.817	1'41.636	241,6	15:41'53.310
16	39.639	35.792	38.302	1'53.733	241,6	15:43'34.946
17	59.393	1'27.307	45.259	3'11.959	240,5	15:45'28.679
						15:48'40.638

41 E. PESCE (1'43.849)						
Lap	Seg.1	Seg.2	Seg.3	Lap Time	km/h	Local Time
1	47.226	36.227	46.780	2'10.233P	155,0	15:10'40.721
2	46.147	36.263	40.934	2'03.344	182,4	15:12'50.954
3	37.424	32.260	38.008	1'47.692	240,0	15:14'54.298
4	37.308	32.262	38.107	1'47.677	238,4	15:16'41.990
5	41.654	35.390	38.501	1'55.545	208,5	15:18'29.667
6	37.134	32.479	38.446	1'48.059	238,9	15:20'25.212
7	37.684			9'58.760P	238,4	15:22'13.271
8	49.722	37.602	46.172	2'13.496P	145,6	15:32'12.031
9	44.106	36.551	38.807	1'59.464	180,3	15:34'25.527
10	36.078	30.861	37.332	1'44.271	241,1	15:36'24.991
11	35.842	30.729	37.384	1'43.955	240,0	15:38'09.262
12	35.761	30.656	37.432	1'43.849	240,0	15:39'53.217
13	42.024	36.153	37.837	1'56.014	200,7	15:41'37.066
14	36.115	30.827	37.390	1'44.332	240,0	15:43'33.080
						15:45'17.412

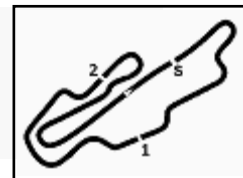
33 G. HENRION (1'44.530)						
Lap	Seg.1	Seg.2	Seg.3	Lap Time	km/h	Local Time
						15:10'29.200
1	44.054	35.884	1'21.433	2'41.371P	159,8	15:13'10.571
2	39.423	31.978	37.778	1'49.179P	177,0	15:14'59.750
3	36.819	31.589	37.613	1'46.021	237,9	15:16'45.771
4	36.623	31.462	37.747	1'45.832	240,0	15:18'31.603
5	36.553	31.486	37.627	1'45.666	238,4	15:20'17.269
6	36.805	31.596	37.758	1'46.159	236,3	15:22'03.428
7	36.774	31.559	37.685	1'46.018	235,8	15:23'49.446
8	39.992			4'21.509P	238,4	15:28'10.955
9	49.173	36.173	40.833	2'06.179P	131,7	15:28'10.955
10	40.384	31.991	38.554	1'50.929	185,9	15:30'17.134
11	36.626	31.483	37.581	1'45.690	236,3	15:32'08.063
12	36.485	31.204	37.469	1'45.158	236,8	15:33'53.753
13	36.396	31.118	37.488	1'45.002	236,8	15:35'38.911
14	36.367	31.067	37.335	1'44.769	237,4	15:37'23.913
15	36.165	31.054	37.311	1'44.530	237,9	15:39'08.682
16	36.068	31.077	37.563	1'44.708	237,9	15:40'53.212
17	36.239	31.105	37.631	1'44.975	240,5	15:42'37.920
18	36.254	31.214	3'16.600	4'24.068P	237,4	15:44'22.895
19	40.491	31.430	37.508	1'49.429P	172,2	15:48'46.963
						15:50'36.392

55 J. CHADWICK (1'43.104)						
Lap	Seg.1	Seg.2	Seg.3	Lap Time	km/h	Local Time
						15:10'13.562
1	45.276	35.635	40.614	2'01.525P	159,1	15:12'15.087
2	38.361	32.860	38.317	1'49.538	230,3	15:14'04.625
3	36.622	31.606	37.583	1'45.811	238,4	15:15'50.436
4	38.421	39.117	39.113	1'56.651	239,5	15:17'47.087
5	36.468	31.118	37.759	1'45.345	238,9	15:19'32.432
6	36.470	31.536	37.709	1'45.715	240,0	15:21'18.147
7	49.568	34.481	38.612	2'02.661	203,4	15:23'20.808
8	36.592	31.177	37.750	1'45.519	238,9	15:25'06.327
9	36.722			6'37.347P	239,5	15:31'43.674
10	50.714			1'33.631P	134,5	15:33'17.305
11	45.699	38.971	39.649	2'04.319P	159,1	15:35'21.624
12	39.891	34.759	38.959	1'53.609	236,8	15:37'15.233
13	35.774	30.580	37.176	1'43.530	240,5	15:38'58.763
14	35.535	30.339	37.230	1'43.104	240,0	15:40'41.867
15	42.104	35.701	37.667	1'55.472	200,0	15:42'37.339
16	35.619	30.547	37.097	1'43.263	242,2	15:44'20.602

40 K. LAPPALAINEN (1'42.537)						
Lap	Seg.1	Seg.2	Seg.3	Lap Time	km/h	Local Time
						15:10'14.982
1	47.456	38.453	40.838	2'06.747P	154,3	15:12'21.729
2	38.379	34.378	37.947	1'50.704	235,8	15:14'12.433
3	36.023	31.120	37.521	1'44.664	240,0	15:15'57.097
4	36.161	30.873	37.369	1'44.403	241,1	15:17'41.500
5	35.976	30.963	37.394	1'44.333	241,1	15:19'25.833
6	36.249	43.422	39.874	1'59.545	240,5	15:21'25.378
7	36.199	30.884	37.348	1'44.431	241,1	15:23'09.809
8	36.010	30.883	37.506	1'44.399	241,1	15:24'54.208
9	40.235			7'25.002P	223,6	15:32'19.210
10	58.794	41.488	44.400	2'24.682P	102,9	15:34'43.892
11	40.484	37.030	38.943	1'56.457	231,8	15:36'40.349
12	38.400	34.977	38.280	1'51.657	240,0	15:38'32.006
13	35.774	30.531	37.129	1'43.434	240,5	15:40'15.440
14	35.362	30.151	37.024	1'42.537	241,1	15:41'57.977
15	35.314	30.293	37.075	1'42.682	241,1	15:43'40.659
16	46.698	39.593	1'00.710	2'27.001	184,9	15:46'07.660

99 A. COLA (1'45.584)						
Lap	Seg.1	Seg.2	Seg.3	Lap Time	km/h	Local Time
						15:10'25.754
1	45.458	36.704	40.273	2'02.435P	168,0	15:12'28.189
2	37.317	32.867	38.269	1'48.453	237,9	15:14'16.642
3	36.869	31.967	37.956	1'46.792	239,5	15:16'03.434
4	37.272	31.882	39.081	1'48.235	238,9	15:17'51.669
5	36.891	32.101	38.341	1'47.333	239,5	15:19'39.002
6	36.968	31.834	38.190	1'46.992	238,4	15:21'25.994
7	37.931			6'58.987P	240,5	15:28'24.981
8	40.992	33.229	38.524	1'52.745P	173,4	15:30'17.726
9	36.985	31.968	38.164	1'47.117	238,4	15:32'04.843
10	37.196	32.532	39.920	1'49.648	239,5	15:33'54.491
11	37.591			8'56.138P	241,6	15:42'50.629
12	46.599	37.439	38.957	2'02.995P	161,7	15:44'53.624
13	37.031	57.774	38.588	4'15.735	77,3	15:49'09.359
14	36.823	31.216	37.545	1'45.584	240,5	15:50'54.943

02/10/2020 P = Pits In/Out - C = Lap Time Cancelled

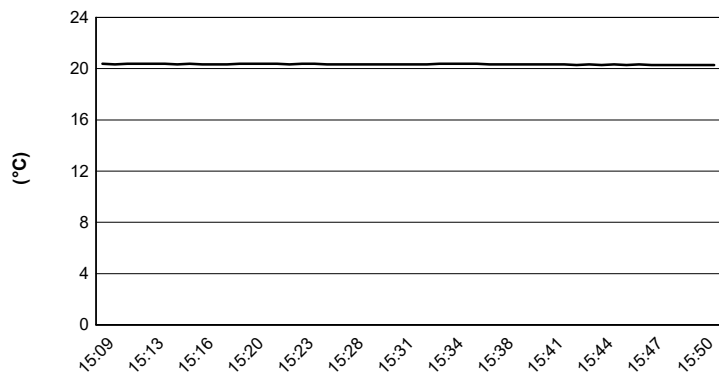


ACI Racing Weekend Mugello 01-04 Ottobre 2020
Formula Regional European Championship - Weather Report FP 2

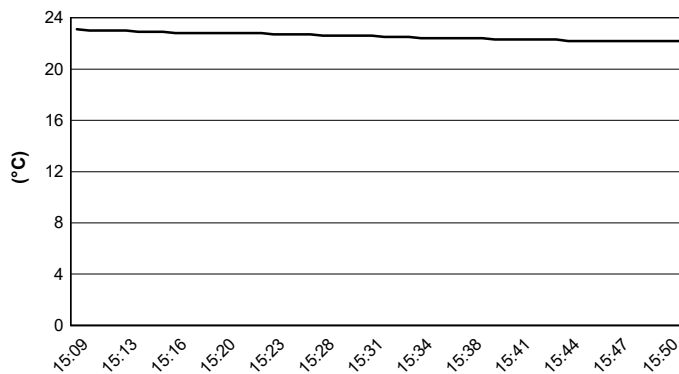
Aut. Int. Mugello Auto 5.245 m

Session started 15:09 - Session ended 15:51

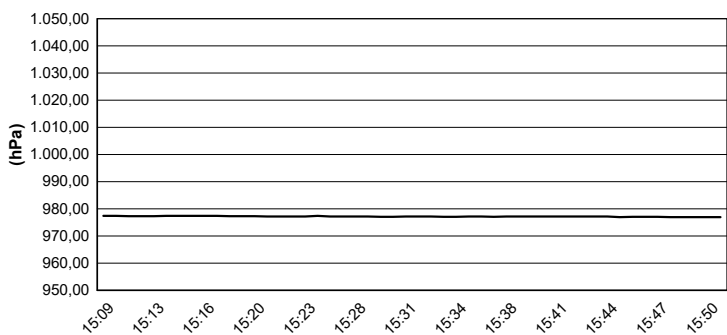
Air Temperature



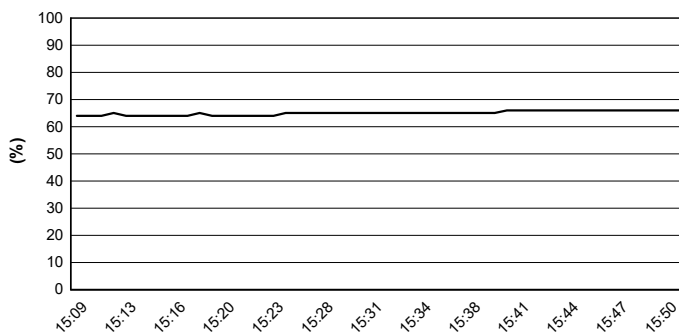
Track Temperature



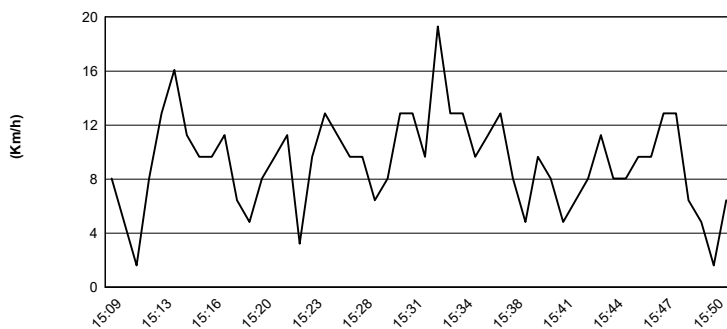
Air Pressure



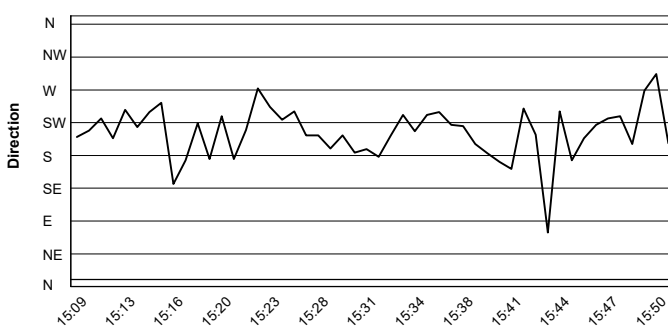
Humidity



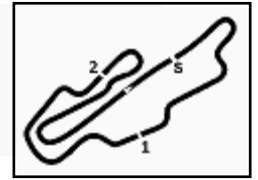
Wind Speed



Wind Direction



02/10/2020



ACI Racing Weekend Mugello 01-04 Ottobre 2020

Formula Regional European Championship - Sector and Speeds FP 2

Aut. Int. Mugello Auto 5.245 m

BEST LAP

1	6 RASMUSSEN Oliver	F3 Tatuus 318 A.R.	1'41.580
2	14 LECLERC Arthur	F3 Tatuus 318 A.R.	1'41.636
3	10 PETECOF Gianluca	F3 Tatuus 318 A.R.	1'41.699
4	3 CHOVELT Pierre Louis	F3 Tatuus 318 A.R.	1'42.255
5	4 VIPS Juri	F3 Tatuus 318 A.R.	1'42.314
6	5 PASMA Patrick	F3 Tatuus 318 A.R.	1'42.357
7	40 LAPPALAINEN Konsta	F3 Tatuus 318 A.R.	1'42.537
8	11 FAMULARO Alessandro	F3 Tatuus 318 A.R.	1'42.789
9	55 CHADWICK Jamie Laura	F3 Tatuus 318 A.R.	1'43.104
10	41 PESCE Emilio	F3 Tatuus 318 A.R.	1'43.849
11	33 HENRION Gillian	F3 Tatuus 318 A.R.	1'44.530
12	99 COLA Andrea	F3 Tatuus 318 A.R.	1'45.584

SPEED

1	10 PETECOF Gianluca	F3 Tatuus 318 A.R.	242,2
2	55 CHADWICK Jamie Laura	F3 Tatuus 318 A.R.	242,2
3	5 PASMA Patrick	F3 Tatuus 318 A.R.	242,2
4	40 LAPPALAINEN Konsta	F3 Tatuus 318 A.R.	241,6
5	3 CHOVELT Pierre Louis	F3 Tatuus 318 A.R.	241,6
6	14 LECLERC Arthur	F3 Tatuus 318 A.R.	241,6
7	6 RASMUSSEN Oliver	F3 Tatuus 318 A.R.	241,6
8	11 FAMULARO Alessandro	F3 Tatuus 318 A.R.	241,6
9	99 COLA Andrea	F3 Tatuus 318 A.R.	241,6
10	41 PESCE Emilio	F3 Tatuus 318 A.R.	241,1
11	33 HENRION Gillian	F3 Tatuus 318 A.R.	240,5
12	4 VIPS Juri	F3 Tatuus 318 A.R.	240,0

SEG. 1

1	6 RASMUSSEN Oliver	34.958
2	14 LECLERC Arthur	34.973
3	10 PETECOF Gianluca	35.182
4	3 CHOVELT Pierre Louis	35.214
5	4 VIPS Juri	35.283
6	40 LAPPALAINEN Konsta	35.314
7	5 PASMA Patrick	35.346
8	11 FAMULARO Alessandro	35.380
9	55 CHADWICK Jamie Laura	35.535
10	41 PESCE Emilio	35.761
11	33 HENRION Gillian	36.068
12	99 COLA Andrea	36.823

SEG. 2

1	6 RASMUSSEN Oliver	29.715
2	10 PETECOF Gianluca	29.815
3	14 LECLERC Arthur	29.846
4	4 VIPS Juri	29.974
5	3 CHOVELT Pierre Louis	30.089
6	5 PASMA Patrick	30.115
7	40 LAPPALAINEN Konsta	30.151
8	11 FAMULARO Alessandro	30.264
9	55 CHADWICK Jamie Laura	30.339
10	41 PESCE Emilio	30.656
11	33 HENRION Gillian	31.054
12	99 COLA Andrea	31.216

SEG. 3

1	10 PETECOF Gianluca	36.609
2	14 LECLERC Arthur	36.676
3	6 RASMUSSEN Oliver	36.786
4	5 PASMA Patrick	36.833
5	3 CHOVELT Pierre Louis	36.835
6	11 FAMULARO Alessandro	36.939
7	4 VIPS Juri	36.988
8	40 LAPPALAINEN Konsta	37.024
9	55 CHADWICK Jamie Laura	37.097
10	33 HENRION Gillian	37.311
11	41 PESCE Emilio	37.332
12	99 COLA Andrea	37.545

02/10/2020