

ACI Racing Weekend Misano, 5-6 Giugno 2021

Italian F4 Championship by Abarth - Result Free Practice 1

Misano Circuit Sic 58 4.226 m

No.	Driver	Nat	Entrant	Team	Car	Class	Time	Gap	Rel.	Laps
1	13 DUFEK Joshua	AUT	Van Amersfoort Racing	Van Amersfoort Racing	Tatuus F4 T014 Abarth		1'34.510			17
2	15 BEDRIN Nikita	RUS	Van Amersfoort Racing	Van Amersfoort Racing	Tatuus F4 T014 Abarth	R	1'34.575	0.065	0.065	17
3	10 DÜRKSEN Joshua	PRY	Muecke Motorsport	Muecke Motorsport	Tatuus F4 T014 Abarth		1'34.723	0.213	0.148	16
4	87 BEARMAN Oliver	GBR	Van Amersfoort Racing	Van Amersfoort Racing	Tatuus F4 T014 Abarth		1'34.786	0.276	0.063	16
5	72 FORNAROLI Leonardo	ITA	Iron Lynx	Iron Lynx	Tatuus F4 T014 Abarth		1'34.789	0.279	0.003	19
6	6 MONTOYA Sebastian	COL	Prema Powerteam	Prema Powerteam	Tatuus F4 T014 Abarth		1'34.790	0.280	0.001	17
7	18 CENYU Han	CHN	Van Amersfoort Racing	Van Amersfoort Racing	Tatuus F4 T014 Abarth		1'34.827	0.317	0.037	18
8	55 BERNIER Victor	FRA	R-ACE GP	R-ACE GP	Tatuus F4 T014 Abarth		1'34.858	0.348	0.031	20
9	86 VALINT Bence	HUN	Van Amersfoort Racing	Van Amersfoort Racing	Tatuus F4 T014 Abarth		1'34.879	0.369	0.021	21
10	35 BAPTISTE Nicolas	COL	Cram Motorsport	Cram Motorsport	Tatuus F4 T014 Abarth	R	1'34.898	0.388	0.019	18
11	7 SMAL Kirill	RUS	Prema Powerteam	Prema Powerteam	Tatuus F4 T014 Abarth		1'34.920	0.410	0.022	17
12	56 MEGUETOUNIF Sami	FRA	R-ACE GP	R-ACE GP	Tatuus F4 T014 Abarth		1'34.923	0.413	0.003	19
13	28 BRASCHI Francesco	ITA	Jenzer Motorsport	Jenzer Motorsport	Tatuus F4 T014 Abarth	R	1'35.024	0.514	0.101	16
14	25 SAMIR Ben	CHE	Jenzer Motorsport	Jenzer Motorsport	Tatuus F4 T014 Abarth	R	1'35.025	0.515	0.001	16
15	12 PATRESE Lorenzo	ITA	AKM Motorsport	AKM Motorsport	Tatuus F4 T014 Abarth	R	1'35.129	0.619	0.104	18
16	88 AL QUBAISI Hamda	UAE	Prema Powerteam	Prema Powerteam	Tatuus F4 T014 Abarth		1'35.183	0.673	0.054	17
17	23 ZUNIGA Erick	MEX	Muecke Motorsport	Muecke Motorsport	Tatuus F4 T014 Abarth		1'35.247	0.737	0.064	17
18	37 SZTUKA Kacper	POL	AS Motorsport	AS Motorsport	Tatuus F4 T014 Abarth	R	1'35.261	0.751	0.014	17
19	41 RIED Jonas	DEU	Muecke Motorsport	Muecke Motorsport	Tatuus F4 T014 Abarth	R	1'35.277	0.767	0.016	17
20	52 REXHEPI Eron	CHE	BVM Racing	BVM Racing	Tatuus F4 T014 Abarth	R	1'35.328	0.818	0.051	15
21	17 BIZZOTTO Leonardo	ITA	BVM Racing	BVM Racing	Tatuus F4 T014 Abarth	R	1'35.354	0.844	0.026	16
22	83 WEUG Maya	BEL	Iron Lynx	Iron Lynx	Tatuus F4 T014 Abarth	R	1'35.390	0.880	0.036	22
23	24 WISNICKI Piotr	POL	Jenzer Motorsport	Jenzer Motorsport	Tatuus F4 T014 Abarth		1'35.434	0.924	0.044	15
24	20 CONRAD Laursen	DNK	Prema Powerteam	Prema Powerteam	Tatuus F4 T014 Abarth	R	1'35.670	1.160	0.236	17
25	73 ARMANNI Pietro	ITA	Iron Lynx	Iron Lynx	Tatuus F4 T014 Abarth	R	1'35.689	1.179	0.019	21
26	11 REVESZ Levente	HUN	AKM Motorsport	AKM Motorsport	Tatuus F4 T014 Abarth	R	1'35.720	1.210	0.031	20
27	54 AMAND Marcus	FRA	R-ACE GP	R-ACE GP	Tatuus F4 T014 Abarth	R	1'35.722	1.212	0.002	18
28	77 PERINO Pedro	POR	DR Formula	DR Formula	Tatuus F4 T014 Abarth	R	1'35.822	1.312	0.100	20
29	27 GARCIZARCE DAVILLA Jorge	MEX	Jenzer Motorsport	Jenzer Motorsport	Tatuus F4 T014 Abarth		1'35.913	1.403	0.091	20
30	68 REYNOSO SANTIAGO Ramos	MEX	Jenzer Motorsport	Jenzer Motorsport	Tatuus F4 T014 Abarth					0

Humidity:	54%	AIR	24°C
Condition:	DRY	Temp:	38°C

Race Director : Fabrizio Fondacci

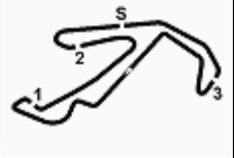
Clerck of the Course : Alessandro Ferrari

Start	End
03/06/2021 18:09	18:51



Powered by FICr PERUGIA TIMING





ACI Racing Weekend Misano, 5-6 Giugno 2021
Italian F4 Championship by Abarth - Best Sectors & Speed Free Practice 1

Misano Circuit Sic 58 4.226 m

BEST LAP

1	13 DUFEK Joshua	Tatuus F4 T014 Abarth	1'34.510
2	15 BEDRIN Nikita	Tatuus F4 T014 Abarth	1'34.575
3	10 DÜRKSEN Joshua	Tatuus F4 T014 Abarth	1'34.723
4	87 BEARMAN Oliver	Tatuus F4 T014 Abarth	1'34.786
5	72 FORNAROLI Leonardo	Tatuus F4 T014 Abarth	1'34.789
6	6 MONTOYA Sebastian	Tatuus F4 T014 Abarth	1'34.790
7	18 CENYU Han	Tatuus F4 T014 Abarth	1'34.827
8	55 BERNIER Victor	Tatuus F4 T014 Abarth	1'34.858
9	86 VALINT Bence	Tatuus F4 T014 Abarth	1'34.879
10	35 BAPTISTE Nicolas	Tatuus F4 T014 Abarth	1'34.898
11	7 SMAL Kirill	Tatuus F4 T014 Abarth	1'34.920
12	56 MEGUETOUNIF Sami	Tatuus F4 T014 Abarth	1'34.923
13	28 BRASCHI Francesco	Tatuus F4 T014 Abarth	1'35.024
14	25 SAMIR Ben	Tatuus F4 T014 Abarth	1'35.025
15	12 PATRESE Lorenzo	Tatuus F4 T014 Abarth	1'35.129
16	88 AL QUBAIS I Hamda	Tatuus F4 T014 Abarth	1'35.183
17	23 ZUNIGA Erick	Tatuus F4 T014 Abarth	1'35.247
18	37 SZTUKA Kacper	Tatuus F4 T014 Abarth	1'35.261
19	41 RIED Jonas	Tatuus F4 T014 Abarth	1'35.277
20	52 REXHEPI Eron	Tatuus F4 T014 Abarth	1'35.328
21	17 BIZZOTTO Leonardo	Tatuus F4 T014 Abarth	1'35.354
22	83 WEUG Maya	Tatuus F4 T014 Abarth	1'35.390
23	24 WISNICKI Piotr	Tatuus F4 T014 Abarth	1'35.434
24	20 CONRAD Laursen	Tatuus F4 T014 Abarth	1'35.670
25	73 ARMANNI Pietro	Tatuus F4 T014 Abarth	1'35.689
26	11 REVESZ Levente	Tatuus F4 T014 Abarth	1'35.720
27	54 AMAND Marcus	Tatuus F4 T014 Abarth	1'35.722
28	77 PERINO Pedro	Tatuus F4 T014 Abarth	1'35.822
29	27 GARCJARCE DAVILLA Jorge	Tatuus F4 T014 Abarth	1'35.913
30	68 REYNOSO SANTIAGO Ramos	Tatuus F4 T014 Abarth	

SPEED

1	25 SAMIR Ben	Tatuus F4 T014 Abarth	200,4
2	52 REXHEPI Eron	Tatuus F4 T014 Abarth	200,0
3	15 BEDRIN Nikita	Tatuus F4 T014 Abarth	200,0
4	28 BRASCHI Francesco	Tatuus F4 T014 Abarth	200,0
5	41 RIED Jonas	Tatuus F4 T014 Abarth	199,6
6	18 CENYU Han	Tatuus F4 T014 Abarth	199,3
7	37 SZTUKA Kacper	Tatuus F4 T014 Abarth	198,5
8	77 PERINO Pedro	Tatuus F4 T014 Abarth	198,5
9	10 DÜRKSEN Joshua	Tatuus F4 T014 Abarth	198,2
10	86 VALINT Bence	Tatuus F4 T014 Abarth	198,2
11	56 MEGUETOUNIF Sami	Tatuus F4 T014 Abarth	198,2
12	55 BERNIER Victor	Tatuus F4 T014 Abarth	197,8
13	72 FORNAROLI Leonardo	Tatuus F4 T014 Abarth	197,8
14	24 WISNICKI Piotr	Tatuus F4 T014 Abarth	197,8
15	17 BIZZOTTO Leonardo	Tatuus F4 T014 Abarth	197,8
16	7 SMAL Kirill	Tatuus F4 T014 Abarth	197,8
17	6 MONTOYA Sebastian	Tatuus F4 T014 Abarth	197,8
18	27 GARCJARCE DAVILLA Jorge	Tatuus F4 T014 Abarth	197,1
19	20 CONRAD Laursen	Tatuus F4 T014 Abarth	197,1
20	88 AL QUBAIS I Hamda	Tatuus F4 T014 Abarth	197,1
21	13 DUF EK Joshua	Tatuus F4 T014 Abarth	197,1
22	35 BAPTISTE Nicolas	Tatuus F4 T014 Abarth	197,1
23	83 WEUG Maya	Tatuus F4 T014 Abarth	196,7
24	12 PATRESE Lorenzo	Tatuus F4 T014 Abarth	196,7
25	73 ARMANNI Pietro	Tatuus F4 T014 Abarth	196,7
26	87 BEARMAN Oliver	Tatuus F4 T014 Abarth	196,7
27	23 ZUNIGA Erick	Tatuus F4 T014 Abarth	196,4
28	11 REVESZ Levente	Tatuus F4 T014 Abarth	195,7
29	54 AMAND Marcus	Tatuus F4 T014 Abarth	195,3

SEG. 1

1	87 BEARMAN Oliver	24.011
2	15 BEDRIN Nikita	24.025
3	7 SMAL Kirill	24.063
4	72 FORNAROLI Leonardo	24.074
5	13 DUF EK Joshua	24.082
6	86 VALINT Bence	24.090
7	10 DÜRKSEN Joshua	24.106
8	55 BERNIER Victor	24.128
9	28 BRASCHI Francesco	24.136
10	18 CENYU Han	24.166
11	35 BAPTISTE Nicolas	24.166
12	6 MONTOYA Sebastian	24.168
13	37 SZTUKA Kacper	24.176
14	88 AL QUBAIS I Hamda	24.185
15	56 MEGUETOUNIF Sami	24.191
16	23 ZUNIGA Erick	24.238
17	41 RIED Jonas	24.241
18	73 ARMANNI Pietro	24.255
19	24 WISNICKI Piotr	24.255
20	52 REXHEPI Eron	24.257
21	83 WEUG Maya	24.266
22	25 SAMIR Ben	24.268
23	12 PATRESE Lorenzo	24.279
24	17 BIZZOTTO Leonardo	24.283
25	54 AMAND Marcus	24.316
26	20 CONRAD Laursen	24.372
27	77 PERINO Pedro	24.395
28	11 REVESZ Levente	24.400
29	27 GARCJARCE DAVILLA	24.456

SEG. 2

1	6 MONTOYA Sebastian	22.760
2	18 CENYU Han	22.763
3	13 DUF EK Joshua	22.771
4	15 BEDRIN Nikita	22.828
5	72 FORNAROLI Leonardo	22.853
6	86 VALINT Bence	22.860
7	55 BERNIER Victor	22.872
8	87 BEARMAN Oliver	22.873
9	10 DÜRKSEN Joshua	22.881
10	88 AL QUBAIS I Hamda	22.889
11	25 SAMIR Ben	22.891
12	52 REXHEPI Eron	22.908
13	7 SMAL Kirill	22.922
14	20 CONRAD Laursen	22.929
15	28 BRASCHI Francesco	22.929
16	35 BAPTISTE Nicolas	22.930
17	23 ZUNIGA Erick	22.942
18	12 PATRESE Lorenzo	22.942
19	83 WEUG Maya	22.946
20	17 BIZZOTTO Leonardo	22.956
21	37 SZTUKA Kacper	22.970
22	41 RIED Jonas	22.979
23	56 MEGUETOUNIF Sami	22.979
24	77 PERINO Pedro	22.982
25	24 WISNICKI Piotr	23.015
26	73 ARMANNI Pietro	23.071
27	11 REVESZ Levente	23.093
28	27 GARCJARCE DAVILLA	23.112
29	54 AMAND Marcus	23.113

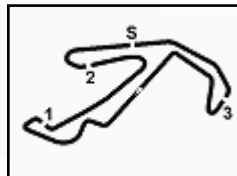
SEG. 3

1	13 DUF EK Joshua	26.941
2	56 MEGUETOUNIF Sami	26.977
3	18 CENYU Han	26.983
4	15 BEDRIN Nikita	27.011
5	87 BEARMAN Oliver	27.013
6	55 BERNIER Victor	27.021
7	12 PATRESE Lorenzo	27.034
8	10 DÜRKSEN Joshua	27.037
9	7 SMAL Kirill	27.047
10	6 MONTOYA Sebastian	27.053
11	86 VALINT Bence	27.058
12	35 BAPTISTE Nicolas	27.101
13	24 WISNICKI Piotr	27.107
14	72 FORNAROLI Leonardo	27.109
15	23 ZUNIGA Erick	27.110
16	25 SAMIR Ben	27.116
17	28 BRASCHI Francesco	27.131
18	52 REXHEPI Eron	27.149
19	88 AL QUBAIS I Hamda	27.178
20	37 SZTUKA Kacper	27.192
21	41 RIED Jonas	27.194
22	73 ARMANNI Pietro	27.195
23	20 CONRAD Laursen	27.205
24	17 BIZZOTTO Leonardo	27.229
25	54 AMAND Marcus	27.255
26	77 PERINO Pedro	27.283
27	83 WEUG Maya	27.301
28	27 GARCJARCE DAVILLA	27.365
29	11 REVESZ Levente	27.443

SEG. 4

1	13 DUF EK Joshua	20.429
2	12 PATRESE Lorenzo	20.614
3	15 BEDRIN Nikita	20.621
4	87 BEARMAN Oliver	20.624
5	72 FORNAROLI Leonardo	20.636
6	55 BERNIER Victor	20.646
7	7 SMAL Kirill	20.658
8	18 CENYU Han	20.659
9	56 MEGUETOUNIF Sami	20.665
10	10 DÜRKSEN Joshua	20.680
11	35 BAPTISTE Nicolas	20.683
12	6 MONTOYA Sebastian	20.690
13	86 VALINT Bence	20.708
14	88 AL QUBAIS I Hamda	20.715
15	28 BRASCHI Francesco	20.728
16	11 REVESZ Levente	20.749
17	25 SAMIR Ben	20.750
18	41 RIED Jonas	20.754
19	24 WISNICKI Piotr	20.761
20	37 SZTUKA Kacper	20.785
21	17 BIZZOTTO Leonardo	20.792
22	23 ZUNIGA Erick	20.819
23	52 REXHEPI Eron	20.825
24	83 WEUG Maya	20.835
25	54 AMAND Marcus	20.862
26	73 ARMANNI Pietro	20.883
27	27 GARCJARCE DAVILLA	20.897
28	77 PERINO Pedro	20.908
29	20 CONRAD Laursen	21.003





ACI Racing Weekend Misano, 5-6 Giugno 2021

Italian F4 Championship by Abarth - Ideal Time Free Practice 1

Misano Circuit Sic 58 4.226 m

No.	Driver	Car	Seg. 1	Seg. 2	Seg. 3	Seg. 4	Ideal Time		
			Diff. 1	Diff. 2	Diff. 3	Diff. 4	Best Lap	Pos.	Diff.
1	13 DUFEK J. (AUT)	Tatuus F4 T014 Abarth	24.082 +0.130	22.771 +0.065	26.941 +0.092	20.429	1'34.223 1'34.510	1	0.287
2	15 BEDRIN N. (RUS)	Tatuus F4 T014 Abarth	24.025	22.828 +0.032	27.011 +0.007	20.621 +0.051	1'34.485 1'34.575	2	0.090
3	87 BEARMAN O. (GBR)	Tatuus F4 T014 Abarth	24.011	22.873 +0.222	27.013	20.624 +0.043	1'34.521 1'34.786	4	0.265
4	18 CENYU H. (CHN)	Tatuus F4 T014 Abarth	24.166 +0.079	22.763 +0.060	26.983 +0.071	20.659 +0.046	1'34.571 1'34.827	7	0.256
5	55 BERNIER V. (FRA)	Tatuus F4 T014 Abarth	24.128 +0.031	22.872 +0.032	27.021	20.646 +0.128	1'34.667 1'34.858	8	0.191
6	6 MONTOYA S. (COL)	Tatuus F4 T014 Abarth	24.168 +0.059	22.760	27.053 +0.060	20.690	1'34.671 1'34.790	6	0.119
7	72 FORNAROLI L. (ITA)	Tatuus F4 T014 Abarth	24.074 +0.037	22.853 +0.016	27.109	20.636 +0.064	1'34.672 1'34.789	5	0.117
8	7 SMAL K. (RUS)	Tatuus F4 T014 Abarth	24.063 +0.053	22.922	27.047 +0.003	20.658 +0.174	1'34.690 1'34.920	11	0.230
9	10 DÜRKSEN J. (PRY)	Tatuus F4 T014 Abarth	24.106 +0.019	22.881	27.037	20.680	1'34.704 1'34.723	3	0.019
10	86 VALINT B. (HUN)	Tatuus F4 T014 Abarth	24.090 +0.060	22.860 +0.084	27.058 +0.019	20.708	1'34.716 1'34.879	9	0.163
11	56 MEGUETOUNIF S. (FRA)	Tatuus F4 T014 Abarth	24.191 +0.111	22.979	26.977	20.665	1'34.812 1'34.923	12	0.111
12	12 PATRESE L. (ITA)	Tatuus F4 T014 Abarth	24.279 +0.049	22.942 +0.138	27.034 +0.073	20.614	1'34.869 1'35.129	15	0.260
13	35 BAPTISTE N. (COL)	Tatuus F4 T014 Abarth	24.166	22.930 +0.018	27.101	20.683	1'34.880 1'34.898	10	0.018
14	28 BRASCHI F. (ITA)	Tatuus F4 T014 Abarth	24.136 +0.069	22.929 +0.002	27.131 +0.029	20.728	1'34.924 1'35.024	13	0.100
15	88 AL QUBAIS I. (UAE)	Tatuus F4 T014 Abarth	24.185 +0.048	22.889 +0.076	27.178 +0.031	20.715 +0.061	1'34.967 1'35.183	16	0.216
16	25 SAMIR B. (CHE)	Tatuus F4 T014 Abarth	24.268	22.891	27.116	20.750	1'35.025 1'35.025	14	
17	23 ZUNIGA E. (MEX)	Tatuus F4 T014 Abarth	24.238	22.942 +0.032	27.110	20.819 +0.106	1'35.109 1'35.247	17	0.138
18	37 SZTUKA K. (POL)	Tatuus F4 T014 Abarth	24.176	22.970 +0.008	27.192	20.785 +0.130	1'35.123 1'35.261	18	0.138
19	24 WISNICKI P. (POL)	Tatuus F4 T014 Abarth	24.255 +0.021	23.015 +0.054	27.107 +0.152	20.761 +0.069	1'35.138 1'35.434	23	0.296
20	52 REXHEPI E. (CHE)	Tatuus F4 T014 Abarth	24.257 +0.090	22.908 +0.099	27.149	20.825	1'35.139 1'35.328	20	0.189
21	41 RIED J. (DEU)	Tatuus F4 T014 Abarth	24.241	22.979	27.194 +0.081	20.754 +0.028	1'35.168 1'35.277	19	0.109
22	17 BIZZOTTO L. (ITA)	Tatuus F4 T014 Abarth	24.283 +0.014	22.956	27.229 +0.080	20.792	1'35.260 1'35.354	21	0.094
23	83 WEUG M. (BEL)	Tatuus F4 T014 Abarth	24.266 +0.019	22.946	27.301 +0.015	20.835 +0.008	1'35.348 1'35.390	22	0.042
24	73 ARMANNI P. (ITA)	Tatuus F4 T014 Abarth	24.255 +0.268	23.071 +0.017	27.195	20.883	1'35.404 1'35.689	25	0.285
25	20 CONRAD L. (DNK)	Tatuus F4 T014 Abarth	24.372 +0.002	22.929 +0.016	27.205 +0.143	21.003	1'35.509 1'35.670	24	0.161
26	54 AMAND M. (FRA)	Tatuus F4 T014 Abarth	24.316 +0.016	23.113 +0.005	27.255 +0.091	20.862 +0.064	1'35.546 1'35.722	27	0.176
27	77 PERINO P. (POR)	Tatuus F4 T014 Abarth	24.395 +0.121	22.982	27.283 +0.117	20.908 +0.016	1'35.568 1'35.822	28	0.254
28	11 REVESZ L. (HUN)	Tatuus F4 T014 Abarth	24.400	23.093	27.443 +0.035	20.749	1'35.685 1'35.720	26	0.035
29	27 GARCJARCE DAVILLA	Tatuus F4 T014 Abarth	24.456 +0.058	23.112	27.365 +0.025	20.897	1'35.830 1'35.913	29	0.083
	68 REYNOSO SANTIAGO	Tatuus F4 T014 Abarth							
Overall Ideal Time			24.011	22.760	26.941	20.429	1'34.141		

03/06/2021

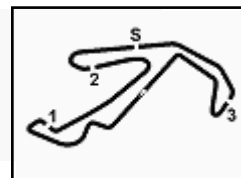


ACI Global Servizi



Powered by FICr PERUGIA TIMING





ACI Racing Weekend Misano, 5-6 Giugno 2021
Italian F4 Championship by Abarth - Chronological Analysis Free Practice 1

Misano Circuit Sic 58 4.226 m

1 / 6

6 S. MONTOYA (1'34.790)								11 L. REVESZ (1'35.720)							
Lap	Seg.1	Seg.2	Seg.3	Seg.4	Lap Time	km/h	Local Time	Lap	Seg.1	Seg.2	Seg.3	Seg.4	Lap Time	km/h	Local Time
1		25.501	29.122	21.346		186,5	18:12'28.063	1							18:10'40.389
2	24.837	23.403	27.630	21.082	1'36.952	194,2	18:14'05.015	2	59.398	25.401	30.066	22.549	2'17.414P	189,1	18:12'57.803
3	24.505	23.140	27.567	20.978	1'36.190	194,9	18:15'41.205	3	25.230	24.185	30.819	22.848	1'43.082	181,2	18:14'40.885
4	24.287	23.037	27.446	20.778	1'35.548	194,9	18:17'16.753	4	24.986	23.365	27.688	21.021	1'37.060	194,2	18:16'17.945
5	24.373	23.105	27.355	20.810	1'35.643	195,3	18:18'52.396	5	24.737	23.260	27.715	21.386	1'37.098	194,9	18:17'55.043
6	28.317	28.801	30.704	21.161	1'48.983	167,2	18:20'41.379	6	24.722	23.256	27.658	20.931	1'36.567	193,9	18:19'31.610
7	24.432	22.992	27.453	20.838	1'35.715	194,9	18:22'17.094	7	24.559	23.178	27.443	21.053	1'36.233	195,3	18:21'07.843
8	24.299	22.971	27.357	20.775	1'35.402	194,6	18:23'52.496	8	24.422	23.143	27.546	21.163	1'36.274	192,9	18:22'44.117
9	24.267	22.935	27.348	20.920	1'35.470	195,3	18:25'27.966	9	24.845	23.529	27.690	4'49.661	6'05.725P	193,2	18:28'49.842
10	24.308	23.036	27.358	35.101	1'49.803P	195,3	18:27'17.769	10	46.655	29.103	32.858	22.298	2'10.914P	152,3	18:31'00.756
11	11'17.588	26.890	32.397	21.272	12'38.147P	140,1	18:39'55.916	11	26.086	24.490	28.617	21.590	1'40.783	190,5	18:32'41.539
12	24.937	23.381	32.610	21.288	1'42.216	188,2	18:41'38.132	12	24.892	23.418	39.655	40.416	2'08.381	193,2	18:34'49.920
13	24.363	22.956	27.273	20.743	1'35.335	196,4	18:43'13.467	13	47.392	51.879	49.541	22.822	2'51.634	73,8	18:37'41.554
14	24.168	22.940	27.160	20.742	1'35.010	197,4	18:44'48.477	14	25.811	24.122	29.623	24.647	1'44.203	190,5	18:39'25.757
15	24.277	22.931	27.087	20.706	1'35.001	196,7	18:46'23.478	15	24.824	23.405	27.724	21.244	1'37.197	193,9	18:41'02.954
16	24.188	22.845	27.053	20.736	1'34.822	197,1	18:47'58.300	16	24.400	23.093	27.478	20.749	1'35.720	194,9	18:42'38.674
17	24.184	22.930	28.986	20.969	1'37.069	197,8	18:49'35.369	17	24.523	23.099	27.607	20.979	1'36.208	193,5	18:44'14.882
18	24.227	22.760	27.113	20.690	1'34.790	196,7	18:51'10.159	18	24.429	23.109	27.500	20.951	1'35.989	194,6	18:45'50.871
								19	25.779	25.516	29.500	21.384	1'42.179	177,9	18:47'33.050
								20	24.786	24.049	28.216	21.381	1'38.432	195,7	18:49'11.482
								21	24.485	23.093	27.451	20.854	1'35.883	194,6	18:50'47.365

7 K. SMAL (1'34.920)								12 L. PATRESE (1'35.129)							
Lap	Seg.1	Seg.2	Seg.3	Seg.4	Lap Time	km/h	Local Time	Lap	Seg.1	Seg.2	Seg.3	Seg.4	Lap Time	km/h	Local Time
1		25.175	29.172	21.637		185,9	18:12'36.216								18:10'42.564
2	25.520	23.952	27.902	21.149	1'38.523	193,2	18:14'14.739								
3	24.395	23.230	27.590	20.804	1'36.019	195,3	18:15'50.758	1							18:10'42.564
4	24.270	22.972	27.351	20.766	1'35.359	195,3	18:17'26.117	2	57.836	25.209	28.822	22.564	2'14.431P	194,9	18:12'56.995
5	24.167	22.976	27.355	20.734	1'35.232	194,9	18:19'01.349	3	25.597	24.130	29.474	22.950	1'42.151	190,1	18:14'39.146
6	24.175	23.114	27.331	20.751	1'35.371	195,7	18:20'36.720	4	24.862	23.238	27.399	21.010	1'36.509	196,0	18:16'15.655
7	32.030	24.035	28.429	21.090	1'45.584	191,2	18:22'22.304	5	24.606	23.088	27.497	21.070	1'36.261	196,0	18:17'51.916
8	24.204	22.937	27.262	20.792	1'35.195	195,3	18:23'57.499	6	24.599	23.122	27.321	21.833	1'36.875	195,7	18:19'28.791
9	24.132	22.967	27.275	21.095	1'35.469	196,0	18:25'32.968	7	25.014	24.547	27.600	23.756	1'40.917	194,6	18:21'09.708
10	24.296	23.056	27.772	36.058	1'51.182P	193,9	18:27'24.150	8	24.566	22.993	27.339	20.993	1'35.891	196,4	18:22'45.599
11	10'32.771	24.027	28.084	41.190	12'06.072P	191,2	18:39'30.222	9	24.432	22.986	27.559	20.994	1'35.971	195,3	18:24'21.570
12	53.069	24.676	30.418	22.937	2'11.100P	187,2	18:41'41.322	10	24.507	23.107	27.383	21.053	1'36.050	194,2	18:25'57.620
13	24.671	25.957	28.682	20.873	1'40.183	187,5	18:43'21.505	11	24.904	23.246	27.639	10'01.833	11'17.622P	193,9	18:37'15.242
14	24.150	23.010	27.175	20.700	1'35.035	196,0	18:44'56.540	12	43.583	27.686	31.181	23.896	2'06.346P	176,8	18:39'21.588
15	24.131	22.991	27.206	20.658	1'34.986	196,7	18:46'31.526	13	26.155	26.851	29.145	21.656	1'43.807	189,8	18:41'05.395
16	24.116	22.922	27.050	20.832	1'34.920	196,7	18:48'06.446	14	24.354	23.530	27.683	21.167	1'36.734	191,8	18:42'42.129
17	24.063	23.021	27.047	20.918	1'35.049	196,7	18:49'41.495	15	24.445	23.403	28.408	22.519	1'38.775	195,3	18:44'20.904
18	24.192	22.924	27.137	20.835	1'35.088	197,8	18:51'16.583	16	24.402	23.002	27.111	20.633	1'35.148	196,7	18:45'56.052
								17	24.328	23.080	27.107	20.614	1'35.129	196,4	18:47'31.181
								18	24.279	23.048	27.280	20.666	1'35.273	195,7	18:49'06.454
								19	24.503	22.942	27.034	21.134	1'35.613	196,7	18:50'42.067

10 J. DÜRKSEN (1'34.723)								13 J. DUFEK (1'34.510)							
Lap	Seg.1	Seg.2	Seg.3	Seg.4	Lap Time	km/h	Local Time	Lap	Seg.1	Seg.2	Seg.3	Seg.4	Lap Time	km/h	Local Time
1		25.797	30.336	21.648		169,8	18:12'44.223								
2	25.643	24.132	28.528	21.685	1'39.988	193,2	18:14'24.211								
3	24.517	23.206	27.429	21.198	1'36.350	195,7	18:16'00.561	1		25.269	29.691	36.700		181,8	18:13'08.910
4	24.308	23.154	27.404	20.958	1'35.824	195,7	18:17'36.385	2	2'58.169	24.534	28.849	21.209	4'12.761P	181,8	18:17'21.671
5	24.381	23.019	27.240	20.808	1'35.448	196,4	18:19'11.833	3	24.519	23.089	27.514	20.808	1'35.930	194,9	18:18'57.601
6	24.354	23.012	27.725	21.041	1'36.132	198,2	18:20'47.965	4	24.484	22.922	27.220	20.726	1'35.352	195,7	18:20'32.953
7	24.143	23.038	27.198	20.794	1'35.173	195,7	18:22'23.138	5	24.248	22.983	27.274	20.798	1'35.303	194,9	18:22'08.256
8	24.106	23.022	27.208	22.166	1'36.502	196,0	18:23'59.640	6	24.163	23.029	27.179	20.861	1'35.232	195,3	18:23'43.488
9	24.152	23.012	27.284	34.414	1'48.862P	195,3	18:25'48.502	7	24.424	27.886	30.109	21.029	1'43.448	188,2	18:25'26.936
10	12'50.849	24.176	28.116	21.233	14'04.374P	193,9	18:39'52.876	8	24.215	22.938	27.209	20.852	1'35.214	195,7	18:27'02.150
11	24.420	23.107	27.417	20.907	1'35.851	195,3	18:41'28.727	9	24.251	22.893	28.006	20.771	1'35.921	193,2	18:28'38.071
12	24.243	23.156	27.178	22.547	1'37.124	196,0	18:43'05.851	10	24.213	22.863	27.350	35.142	1'49.568P	195,7	18:30'27.639
13	24.663	23.187	27.184	20.899	1'35.933	196,4	18:44'41.784	11	7'24.373	26.046	30.681	22.734	8'43.834P	173,9	18:39'11.473
14	24.134	22.922	27.136	20.798	1'34.990	196,7	18:46'16.774	12	25.533	24.515	28.958	20.792	1'39.798	176,5	18:40'51.271
15	24.126	22.936	27.245	20.913	1'35.220	195,7	18:47'51.994	13	24.787	22.934	27.204	20.629	1'35.554	196,4	18:42'26.825
16	24.113	23.026	27.100	20.761	1'35.000	196,4	18:49'26.994	14	24.106	22.876	27.289	20.507	1'34.778	195,7	18:44'01.603
17	24.125	22.881	27.037	20.680	1'34.723	197,8	18:51'01.717	15	24.212	22.836	27.033	20.429	1'34.510	196,4	18:45'36.113

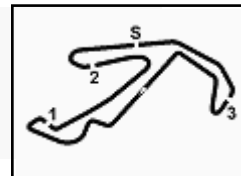
03/06/2021

P = Pits In/Out - C = Lap Time Cancelled



Powered by FICr PERUGIA TIMING





ACI Racing Weekend Misano, 5-6 Giugno 2021
Italian F4 Championship by Abarth - Chronological Analysis Free Practice 1

Misano Circuit Sic 58 4.226 m

2 / 6

16	24.082	22.771	26.941	20.746	1'34.540	197,1	18:47'10.653	17	24.166	22.849	27.212	20.668	1'34.895	197,4	18:46'13.478
17	25.656	23.456	27.530	20.793	1'37.435	195,7	18:48'48.088	18	24.263	22.763	26.983	22.019	1'36.028	199,3	18:47'49.506
18	24.189	22.864	27.096	20.802	1'34.951	196,4	18:50'23.039	19	24.245	22.823	27.054	20.705	1'34.827	198,9	18:49'24.333

15 N. BEDRIN (1'34.575)								20 L. CONRAD (1'35.670)							
Lap	Seg.1	Seg.2	Seg.3	Seg.4	Lap Time	km/h	Local Time	Lap	Seg.1	Seg.2	Seg.3	Seg.4	Lap Time	km/h	Local Time
1		25.980	30.028	22.821		180,0	18:12'54.516	1		26.084	32.697	22.848		165,9	18:13'24.087
2	26.124	24.556	29.223	21.454	1'41.357	187,5	18:14'35.873	2	25.692	24.080	28.526	24.234	1'42.532	193,9	18:15'06.619
3	24.697	23.272	27.528	20.903	1'36.400	194,9	18:16'12.273	3	25.280	23.454	27.721	21.336	1'37.791	194,6	18:16'44.410
4	24.295	23.107	27.221	20.915	1'35.538	197,1	18:17'47.811	4	25.062	23.656	27.694	21.165	1'37.577	194,6	18:18'21.987
5	24.315	23.027	28.711	21.145	1'37.198	193,2	18:19'25.009	5	24.806	23.121	27.679	21.119	1'36.725	194,2	18:19'58.712
6	24.210	23.103	27.185	21.033	1'35.531	196,4	18:21'00.540	6	24.534	23.034	27.532	21.034	1'36.134	194,9	18:21'34.846
7	28.794	29.351	32.490	21.138	1'51.773	154,7	18:22'52.313	7	25.123	25.758	29.695	21.446	1'42.022	190,1	18:23'16.868
8	24.383	23.053	27.279	20.743	1'35.458	195,7	18:24'27.771	8	24.617	23.409	27.594	21.322	1'36.942	194,9	18:24'53.810
9	24.905	23.285	27.733	38.344	1'54.267P	192,2	18:26'22.038	9	24.485	23.019	27.533	21.084	1'36.121	194,6	18:26'29.931
10	6'34.449	26.793	45.206	40.765	8'27.213P	169,3	18:34'49.251	10	24.573	24.190	27.807	43.461	2'00.031P	194,9	18:28'29.962
11	46.993	52.088	48.850	21.580	2'49.511	76,8	18:37'38.762	11	9'40.716	24.722	28.175	23.391	10'57.004P	195,3	18:39'26.966
12	25.622	23.979	33.970	31.119	1'54.690	193,5	18:39'33.452	12	24.871	26.376	35.084	28.541	1'54.872	134,3	18:41'21.838
13	24.535	22.991	27.512	21.411	1'36.449	194,6	18:41'09.901	13	25.283	23.561	27.588	21.369	1'37.801	197,1	18:42'59.639
14	24.173	22.882	27.042	20.947	1'35.044	197,1	18:42'44.945	14	24.392	22.993	27.342	21.101	1'35.828	195,7	18:44'35.467
15	24.104	22.897	27.011	20.791	1'34.803	196,4	18:44'19.748	15	24.504	23.103	27.205	21.019	1'35.831	197,1	18:46'11.298
16	24.025	22.860	27.018	20.672	1'34.575	197,8	18:45'54.323	16	24.653	22.929	27.368	21.138	1'36.088	196,4	18:47'47.386
17	24.175	22.830	27.066	20.621	1'34.692	200,0	18:47'29.015	17	24.372	23.153	27.391	21.146	1'36.062	196,7	18:49'23.448
18	24.062	22.828	27.086	20.674	1'34.650	196,7	18:49'03.665	18	24.374	22.945	27.348	21.003	1'35.670	196,7	18:50'59.118

17 L. BIZZOTTO (1'35.354)								23 E. ZUNIGA (1'35.247)							
Lap	Seg.1	Seg.2	Seg.3	Seg.4	Lap Time	km/h	Local Time	Lap	Seg.1	Seg.2	Seg.3	Seg.4	Lap Time	km/h	Local Time
1		25.216	29.622	22.128		192,5	18:12'50.087	1		25.682	29.310	22.561		188,5	18:13'04.911
2	25.159	23.824	28.233	21.152	1'38.368	191,2	18:14'28.455	2	25.424	24.257	28.752	23.051	1'41.484	190,5	18:14'46.395
3	24.413	23.105	27.318	21.389	1'36.225	196,7	18:16'04.680	3	25.119	23.387	27.781	21.133	1'37.420	195,3	18:16'23.815
4	24.337	23.161	27.502	20.954	1'35.954	196,0	18:17'40.634	4	24.677	23.277	27.739	21.140	1'36.833	194,9	18:18'00.648
5	24.375	23.166	27.467	20.911	1'35.919	196,0	18:19'16.553	5	24.530	23.146	27.434	21.066	1'36.176	194,9	18:19'36.824
6	24.353	23.040	27.408	20.951	1'35.752	196,7	18:20'52.305	6	24.628	23.172	27.456	20.942	1'36.198	195,3	18:21'13.022
7	24.419	23.073	27.390	21.048	1'35.930	196,4	18:22'28.235	7	24.596	23.148	27.528	20.941	1'36.213	194,6	18:22'49.235
8	24.544	23.120	27.314	39.191	1'54.169P	197,1	18:24'22.404	8	24.503	23.101	27.683	20.981	1'36.268	193,2	18:24'25.503
9	9'16.281	36.047	55.290	41.803	11'29.421P	89,2	18:35'51.825	9	24.346	23.076	27.449	21.036	1'35.907	194,2	18:26'01.410
10	2'09.785	24.531	28.594	21.734	3'24.644P	190,8	18:39'16.469	10	24.821	23.887	28.342	37.478	1'54.528P	194,6	18:27'55.938
11	24.968	23.783	28.304	21.026	1'38.081	189,8	18:40'54.550	11	8'34.582	44.781	31.547	34.734	10'25.644P	180,9	18:38'21.582
12	24.494	23.083	27.479	20.951	1'36.007	196,7	18:42'30.557	12	56.032	24.066	28.143	21.091	2'09.332P	189,5	18:40'30.914
13	24.338	22.971	27.363	20.866	1'35.538	197,1	18:44'06.095	13	24.530	23.238	27.320	20.819	1'35.907	196,0	18:42'06.821
14	24.297	22.956	27.309	20.792	1'35.354	196,7	18:45'41.449	14	25.920	23.240	27.300	20.983	1'37.443	195,7	18:43'44.264
15	24.296	22.984	27.252	20.855	1'35.387	197,1	18:47'16.836	15	24.490	23.108	27.286	21.045	1'35.929	195,7	18:45'20.193
16	26.068	25.870	29.276	21.027	1'42.241	193,2	18:48'59.077	16	24.238	22.974	27.110	20.925	1'35.247	196,4	18:46'55.440
17	24.283	23.090	27.229	20.849	1'35.451	197,8	18:50'34.528	17	24.319	23.171	27.395	20.978	1'35.863	195,7	18:48'31.303
18								18	24.257	22.942	27.193	20.945	1'35.337	196,4	18:50'06.640

18 H. CENYU (1'34.827)								24 P. WISNICKI (1'35.434)							
Lap	Seg.1	Seg.2	Seg.3	Seg.4	Lap Time	km/h	Local Time	Lap	Seg.1	Seg.2	Seg.3	Seg.4	Lap Time	km/h	Local Time
1							18:10'30.644	1							
2	1'05.953	25.712	30.482	22.739	2'24.886P	179,7	18:12'55.530	2	44.055	26.920	29.840	21.501	2'02.316P	171,7	18:13'36.685
3	26.265	24.377	29.461	22.786	1'42.889	176,5	18:14'38.419	3	25.031	24.376	27.926	21.019	1'38.352	193,5	18:15'15.037
4	24.857	23.149	27.624	21.000	1'36.630	194,6	18:16'15.049	4	24.371	23.251	27.647	20.880	1'36.149	195,3	18:16'51.186
5	24.481	23.049	27.673	21.012	1'36.215	196,7	18:17'51.264	5	24.451	23.121	27.393	20.906	1'35.871	196,0	18:18'27.057
6	24.514	23.033	27.331	20.870	1'35.748	196,4	18:19'27.012	6	24.430	25.659	28.701	22.096	1'40.886	194,2	18:20'07.943
7	24.316	22.833	27.228	20.945	1'35.322	197,1	18:21'02.334	7	24.339	23.163	27.494	20.822	1'35.818	195,7	18:21'43.761
8	25.351	27.121	32.283	20.985	1'45.740	171,4	18:22'48.074	8	24.345	23.173	27.451	20.940	1'35.909	195,3	18:23'19.670
9	24.501	22.993	27.290	20.659	1'35.443	197,1	18:24'23.517	9	24.285	23.102	27.299	20.761	1'35.447	195,7	18:24'55.117
10	24.543	23.533	27.689	38.849	1'54.614P	196,4	18:26'18.131	10	24.452	23.905	27.842	9'53.834	11'10.033P	195,7	18:36'05.150
11	7'32.050	33.386	48.026	37.012	9'30.474P	117,8	18:35'48.605	11	53.483	27.099	31.925	23.281	2'15.788P	159,1	18:38'20.938
12	46.295	40.295	28.828	21.468	2'16.886	190,5	18:38'05.491	12	24.987	23.262	27.598	20.967	1'36.814	196,0	18:39'57.752
13	25.220	23.285	27.652	20.709	1'36.866	194,2	18:39'42.357	13	24.255	23.049	27.107	21.656	1'36.067	197,8	18:41'33.819
14	24.299	22.823	27.238	22.202	1'36.562	197,4	18:41'18.919	14	24.308	23.015	29.472	20.989	1'37.784	180,0	18:43'11.603
15	24.563	25.555	28.366	26.120	1'44.604	184,6	18:43'03.523	15	24.259	23.189	29.869	20.953	1'38.270	174,5	18:44'49.873
16	24.408	22.867	27.122	20.663	1'35.060	197,1	18:44'38.583								

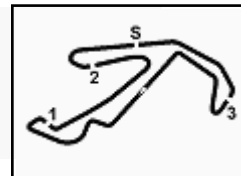
03/06/2021

P = Pits In/Out - C = Lap Time Cancelled



Powered by FICr PERUGIA TIMING





ACI Racing Weekend Misano, 5-6 Giugno 2021
Italian F4 Championship by Abarth - Chronological Analysis Free Practice 1

Misano Circuit Sic 58 4.226 m

3 / 6

16	24.276	23.069	27.259	20.830	1'35.434	197,8	18:46'25.307	16	25.617	23.248	27.351	20.932	1'37.148	198,5	18:46'38.942
								17	24.136	22.962	27.131	20.897	1'35.126	198,9	18:48'14.068

25 B. SAMIR (1'35.025)

Lap	Seg.1	Seg.2	Seg.3	Seg.4	Lap Time	km/h	Local Time
1							18:13'24.815
2	44.161	26.872	33.092	22.513	2'06.638P	157,4	18:15'31.453
3	26.011	24.977	28.402	21.892	1'41.282	188,8	18:17'12.735
4	25.225	24.042	28.044	21.302	1'38.613	193,9	18:18'51.348
5	24.628	23.226	27.577	21.192	1'36.623	197,4	18:20'27.971
6	24.687	23.182	27.667	20.904	1'36.440	195,7	18:22'04.411
7	24.487	23.186	27.565	21.051	1'36.289	195,7	18:23'40.700
8	24.441	23.124	27.494	20.940	1'35.999	196,7	18:25'16.699
9	24.342	23.144	27.376	20.847	1'35.709	197,1	18:26'52.408
10	24.391	23.069	27.442	8'24.407	9'39.309P	198,9	18:36'31.717
11	43.957	25.502	30.398	21.790	2'01.647P	164,9	18:38'33.364
12	25.746	24.327	32.188	22.198	1'44.459	157,7	18:40'17.823
13	24.572	23.111	27.407	20.872	1'35.962	197,1	18:41'53.785
14	24.411	23.026	27.283	20.862	1'35.582	198,2	18:43'29.367
15	24.375	23.005	27.154	20.876	1'35.410	198,9	18:45'04.777
16	24.633	23.013	27.368	20.799	1'35.813	198,2	18:46'40.590
17	24.268	22.891	27.116	20.750	1'35.025	200,4	18:48'15.615

35 N. BAPTISTE (1'34.898)

Lap	Seg.1	Seg.2	Seg.3	Seg.4	Lap Time	km/h	Local Time
1							18:13'12.064
2	26.070	24.163	32.841	22.197	1'45.271	193,5	18:14'57.335
3	24.731	23.307	27.576	21.141	1'36.755	194,2	18:16'34.090
4	24.891	23.213	27.540	21.005	1'36.649	195,3	18:18'10.739
5	24.361	23.046	27.544	21.053	1'36.004	194,9	18:19'46.743
6	24.430	23.016	27.347	20.805	1'35.598	195,7	18:21'22.341
7	24.312	23.058	27.491	21.149	1'36.010	196,7	18:22'58.351
8	24.805	23.301			1'40.445	194,6	18:24'38.796
9	25.105	25.729	27.419	21.074	1'39.327	196,4	18:26'18.123
10	24.443	23.044	27.261	20.979	1'35.727	196,0	18:27'53.850
11	27.251	25.447	28.008	21.091	1'41.797	194,2	18:29'35.647
12	24.413	23.021	27.381	20.872	1'35.687	195,7	18:31'11.334
13	24.401	22.992	27.351	20.880	1'35.624	194,9	18:32'46.958
14	4'08.176	31.629	29.906	35.394	5'45.105P	188,5	18:38'32.063
15	2'14.183	23.573	27.649	20.909	3'26.314P	196,0	18:41'58.377
16	24.672	23.009	27.279	21.032	1'35.992	196,4	18:43'34.369
17	24.496	23.092	27.317	21.390	1'36.295	196,4	18:45'10.664
18	24.252	22.930	27.295	20.740	1'35.217	196,0	18:46'45.881
19	24.166	22.948	27.101	20.683	1'34.898	197,1	18:48'20.779

27 J. GARCJARCE DAVILLA (1'35.913)

Lap	Seg.1	Seg.2	Seg.3	Seg.4	Lap Time	km/h	Local Time
1							18:12'02.351
2	47.288	27.319	30.873	22.894	2'08.374P	176,8	18:14'10.725
3	25.954	24.225	32.515	21.949	1'44.643	128,9	18:15'55.368
4	25.720	23.732			2'02.397	193,9	18:17'57.765
5	26.649	25.607	29.546	22.120	1'43.922	190,8	18:19'41.687
6	25.270	23.569	28.238	21.373	1'38.450	193,5	18:21'20.137
7	25.006	23.429	28.052	21.273	1'37.760	194,6	18:22'57.897
8	24.913	23.882	27.990	21.445	1'38.230	197,1	18:24'36.127
9	24.860	23.418	27.864	21.274	1'37.416	194,6	18:26'13.543
10	24.742	23.481	27.827	21.184	1'37.234	194,9	18:27'50.777
11	24.658	23.264	27.721	21.188	1'36.831	194,2	18:29'27.608
12	26.055	23.505	27.781	5'37.417	6'54.758P	196,7	18:36'22.366
13	48.329	26.771	31.435	22.638	2'09.173P	174,5	18:38'31.539
14	26.074	24.054	28.416	21.193	1'39.737	192,2	18:40'11.276
15	24.689	23.999	27.707	20.998	1'36.693	195,7	18:41'47.969
16	24.675	23.154	27.540	20.964	1'36.333	197,1	18:43'24.302
17	24.567	23.260	27.687	21.172	1'36.686	195,3	18:45'00.988
18	24.656	23.166	27.558	21.086	1'36.466	196,7	18:46'37.454
19	24.674	23.122	27.365	21.036	1'36.197	197,1	18:48'13.651
20	24.456	23.179	27.523	20.983	1'36.141	196,7	18:49'49.792
21	24.514	23.112	27.390	20.897	1'35.913	197,1	18:51'25.705

37 K. SZTUKA (1'35.261)

Lap	Seg.1	Seg.2	Seg.3	Seg.4	Lap Time	km/h	Local Time
1							18:12'39.935
2	25.177	23.933	29.213	22.548	1'40.871	191,5	18:14'20.806
3	24.493	23.423	27.682	21.257	1'36.855	196,4	18:15'57.661
4	24.465	23.120	28.474	21.267	1'37.326	198,2	18:17'34.987
5	24.430	23.209	27.535	21.067	1'36.241	196,0	18:19'11.228
6	24.368	23.067	27.896	22.055	1'37.386	196,4	18:20'48.614
7	24.395	22.970	27.461	21.419	1'36.245	196,7	18:22'24.859
8	24.290	23.058	27.333	20.900	1'35.581	196,7	18:24'00.440
9	24.358	23.004	27.240	20.826	1'35.428	197,4	18:25'35.868
10	24.216	23.126	27.376	35.521	1'50.239P	197,1	18:27'26.107
11	10'29.280	32.194	32.105	23.019	11'56.598P	180,9	18:39'22.705
12	27.165	24.681	28.756	21.314	1'41.916	192,9	18:41'04.621
13	24.537	23.284	27.512	21.121	1'36.454	197,1	18:42'41.075
14	24.187	23.074	27.393	20.785	1'35.439	197,4	18:44'16.514
15	24.176	22.978	27.192	20.915	1'35.261	198,5	18:45'51.775
16	24.335	23.016	27.202	20.964	1'35.517	197,1	18:47'27.292
17	24.266	23.022	27.262	20.927	1'35.477	197,1	18:49'02.769
18	24.270	23.046	27.297	20.835	1'35.448	197,4	18:50'38.217

28 F. BRASCHI (1'35.024)

Lap	Seg.1	Seg.2	Seg.3	Seg.4	Lap Time	km/h	Local Time
1							18:12'56.737
2	45.427	25.848	29.943	24.801	2'06.019P	179,4	18:15'02.756
3	25.998	24.475	34.047	22.950	1'47.470	132,2	18:16'50.226
4	24.769	24.602	28.422	25.584	1'43.377	195,3	18:18'33.603
5	24.706	23.261	27.669	20.964	1'36.600	194,9	18:20'10.203
6	24.516	23.083	27.591	20.747	1'35.937	195,7	18:21'46.140
7	24.397	22.995	27.374	20.880	1'35.646	196,7	18:23'21.786
8	24.341	23.277	32.340	21.029	1'40.987	153,8	18:25'02.773
9	24.949	23.586	27.808	7'46.136	9'02.479P	196,0	18:34'05.252
10	50.336	33.656	46.361	38.633	2'48.986P	132,4	18:36'54.238
11	30.546	23.438	28.106	21.002	1'43.092	195,3	18:38'37.330
12	24.305	23.079	27.353	20.732	1'35.469	197,8	18:40'12.799
13	24.149	23.068	27.380	20.875	1'35.472	198,9	18:41'48.271
14	25.682	23.360	27.578	21.879	1'38.499	197,4	18:43'26.770
15	24.205	22.931	27.160	20.728	1'35.024	197,8	18:45'01.794

41 J. RIED (1'35.277)

Lap	Seg.1	Seg.2	Seg.3	Seg.4	Lap Time	km/h	Local Time
1							18:13'09.620
2	26.819	24.806	29.694	37.842	1'59.161P	190,8	18:15'08.781
3	3'33.258	25.633	34.754	22.312	4'55.957P	109,3	18:20'04.738
4	25.157	23.900	28.122	21.172	1'38.351	193,9	18:21'43.089
5	24.638	23.806	27.745	21.054	1'37.243	196,7	18:23'20.332
6	24.636	23.267	27.462	21.048	1'36.413	196,7	18:24'56.745
7	24.518	23.048	27.528	20.812	1'35.906	197,4	18:26'32.651
8	24.435	23.158	27.320	20.925	1'35.838	196,4	18:28'08.489
9	24.344	23.052	27.529	20.803	1'35.728	196,0	18:29'44.217
10	24.398	23.153	27.344	20.870	1'35.765	196,7	18:31'19.982
11	24.258	23.150	27.377	20.872	1'35.657	196,4	18:32'55.639
12	24.489	23.193	31.969	42.925	2'02.576P	196,4	18:34'58.215
13	5'12.635	24.145	28.340	21.277	6'26.397P	193,2	18:41'24.612
14	24.500	23.047	27.324	21.136	1'36.007	197,8	18:43'00.619
15	24.241	22.979	27.275	20.782	1'35.277	196,4	18:44'35.896

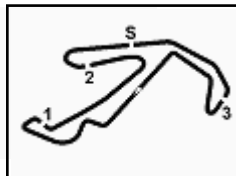
03/06/2021

P = Pits In/Out - C = Lap Time Cancelled



Powered by FICr PERUGIA TIMING





ACI Racing Weekend Misano, 5-6 Giugno 2021

Italian F4 Championship by Abarth - Chronological Analysis Free Practice 1

Misano Circuit Sic 58 4.226 m

4 / 6

16	24.436	23.289	27.617	20.754	1'36.096	198,9	18:46'11.992
17	24.359	23.059	27.194	21.155	1'35.767	198,5	18:47'47.759
18	24.351	23.130	27.574	36.414	1'51.469P	199,6	18:49'39.228

17	24.425	25.078	43.278	24.751	1'57.532	104,9	18:44'32.087
18	24.272	22.911	27.403	20.807	1'35.393	196,7	18:46'07.480
19	24.207	22.937	27.042	20.726	1'34.912	196,7	18:47'42.392
20	24.202	22.976	27.141	20.646	1'34.965	197,4	18:49'17.357
21	24.159	22.904	27.021	20.774	1'34.858	197,8	18:50'52.215

52 E. REXHEPI (1'35.328)							
Lap	Seg.1	Seg.2	Seg.3	Seg.4	Lap Time	km/h	Local Time
1		24.914	29.264	21.705		181,8	18:12'37.040
2	25.723	23.836	27.817	21.165	1'38.541	196,0	18:14'15.581
3	24.781	23.492	27.677	20.943	1'36.893	196,0	18:15'52.474
4	24.595	23.210	27.524	20.958	1'36.287	196,4	18:17'28.761
5	24.376	23.084	27.418	20.996	1'35.874	195,7	18:19'04.635
6	24.541	23.332	28.008	21.978	1'37.859	195,7	18:20'42.494
7	24.403	23.051	27.951	34.637	1'50.042P	197,4	18:22'32.536
8	10'43.386	25.361	31.115	43.634	12'23.496P	180,6	18:34'56.032
9	3'17.300	24.666	28.009	22.541	4'32.516P	188,8	18:39'28.548
10	24.530	23.076	28.015	22.442	1'38.063	200,0	18:41'06.611
11	24.453	23.419	27.415	20.918	1'36.205	198,2	18:42'42.816
12	24.485	22.908	27.212	20.957	1'35.562	198,5	18:44'18.378
13	24.321	22.937	27.212	20.892	1'35.362	197,8	18:45'53.740
14	24.257	22.986	27.562	21.068	1'35.873	197,1	18:47'29.613
15	24.347	23.007	27.149	20.825	1'35.328	198,9	18:49'04.941
16	24.369	23.092	27.415	20.926	1'35.802	197,1	18:50'40.743

56 S. MEGUETOUNIF (1'34.923)							
Lap	Seg.1	Seg.2	Seg.3	Seg.4	Lap Time	km/h	Local Time
1		25.482	31.090	21.838		176,8	18:12'45.970
2	24.869	24.161	30.215	21.152	1'40.397	183,7	18:14'26.367
3	24.520	23.214	27.370	20.956	1'36.060	194,6	18:16'02.427
4	24.423	23.133	27.327	20.827	1'35.710	195,7	18:17'38.137
5	24.348	23.074	27.340	20.865	1'35.627	195,7	18:19'13.764
6	24.405	23.177	29.006	21.180	1'37.768	195,3	18:20'51.532
7	24.292	23.035	27.401	20.973	1'35.701	193,9	18:22'27.233
8	24.390	23.035	27.251	20.944	1'35.620	195,3	18:24'02.853
9	24.301	23.007	27.413	21.001	1'35.722	194,9	18:25'38.575
10	24.247	23.030	27.141	20.944	1'35.362	195,7	18:27'13.937
11	25.008	23.426	27.610	35.130	1'51.174P	193,9	18:29'05.111
12	7'12.400	31.627	37.741	22.710	8'44.478P	129,0	18:37'49.589
13	24.465	23.148	27.317	24.835	1'39.765	196,7	18:39'29.354
14	24.521	23.970	34.386	21.932	1'44.809	136,4	18:41'14.163
15	24.435	22.993	27.088	20.682	1'35.198	196,4	18:42'49.361
16	24.289	23.006	27.032	21.158	1'35.485	197,1	18:44'24.846
17	25.614	24.870	28.029	21.139	1'39.652	195,3	18:46'04.498
18	24.191	23.017	27.226	20.930	1'35.364	198,2	18:47'39.862
19	24.450	23.804	30.012	21.246	1'39.512	178,8	18:49'19.374
20	24.302	22.979	26.977	20.665	1'34.923	197,8	18:50'54.297

54 M. AMAND (1'35.722)							
Lap	Seg.1	Seg.2	Seg.3	Seg.4	Lap Time	km/h	Local Time
1		26.923	32.740	22.863		161,2	18:12'52.413
2	25.695	24.017	28.452	22.311	1'40.475	186,5	18:14'32.888
3	24.602	23.351	27.657	21.051	1'36.661	193,2	18:16'09.549
4	24.534	23.378	27.722	21.168	1'36.802	193,9	18:17'46.351
5	24.527	23.271	27.647	21.040	1'36.485	193,5	18:19'22.836
6	24.514	23.242	28.500	21.192	1'37.448	193,9	18:21'00.284
7	24.512	23.227	27.471	21.144	1'36.354	193,2	18:22'36.638
8	24.421	23.186	27.500	20.862	1'35.969	193,2	18:24'12.607
9	24.329	23.182	27.431	20.982	1'35.924	192,5	18:25'48.531
10	26.290	23.390	27.734	39.720	1'57.134P	192,9	18:27'45.665
11	9'04.480	36.016	28.777	21.590	10'30.863P	186,9	18:38'16.528
12	24.633	23.306	27.654	22.921	1'38.514	193,2	18:39'55.042
13	24.432	23.126	27.523	20.989	1'36.070	193,9	18:41'31.112
14	24.348	23.113	27.413	20.988	1'35.862	194,9	18:43'06.974
15	24.401	23.151	27.452	22.637	1'37.641	195,3	18:44'44.615
16	24.429	23.156	27.451	20.977	1'36.013	194,2	18:46'20.628
17	24.332	23.118	27.346	20.926	1'35.722	194,9	18:47'56.350
18	24.316	23.288	32.118	22.160	1'41.882	185,2	18:49'38.232
19	24.342	23.180	27.255	20.990	1'35.767	194,6	18:51'13.999

72 L. FORNAROLI (1'34.789)							
Lap	Seg.1	Seg.2	Seg.3	Seg.4	Lap Time	km/h	Local Time
1							18:10'10.381
2	58.841	24.738	29.007	37.180	2'29.766P	189,5	18:12'40.147
3	48.634	23.750	28.568	1'21.990	3'02.942P	191,2	18:15'43.089
4	1'00.713	23.988	28.370	38.287	2'31.358P	191,5	18:18'14.447
5	1'00.796	23.193	27.424	20.799	2'12.212P	196,0	18:20'26.659
6	24.175	22.940	27.582	20.737	1'35.434	197,8	18:22'02.093
7	24.074	22.945	27.142	20.646	1'34.807	196,0	18:23'36.900
8	24.191	23.054	27.470	20.636	1'35.351	195,3	18:25'12.251
9	24.167	23.014	27.328	20.644	1'35.153	194,9	18:26'47.404
10	24.100	23.019	27.307	21.081	1'35.507	194,6	18:28'22.911
11	33.568	29.685	34.596	22.213	2'00.062	157,2	18:30'22.973
12	24.259	23.086	27.289	20.743	1'35.377	195,3	18:31'58.350
13	24.189	22.948	27.191	20.690	1'35.018	196,0	18:33'33.368
14	30.042	51.657	1'03.150	4'23.983	6'48.832P	69,0	18:40'22.200
15	45.180	23.695	27.947	20.974	1'57.796P	192,5	18:42'19.996
16	24.319	22.988	27.226	20.655	1'35.188	196,7	18:43'55.184
17	24.111	22.869	27.109	20.700	1'34.789	196,7	18:45'29.973
18	24.137	22.853	27.171	20.695	1'34.856	196,4	18:47'04.829
19	24.115	22.979	27.293	20.678	1'35.065	196,4	18:48'39.894
20	24.118	22.944	27.140	20.768	1'34.970	197,1	18:50'14.864

55 V. BERNIER (1'34.858)							
Lap	Seg.1	Seg.2	Seg.3	Seg.4	Lap Time	km/h	Local Time
1		24.746	29.044	21.694		180,0	18:12'37.890
2	26.037	23.666	30.111	21.477	1'41.291	174,5	18:14'19.181
3	24.537	23.212	27.404	21.098	1'36.251	194,6	18:15'55.432
4	24.427	23.129	27.331	20.782	1'35.669	194,9	18:17'31.101
5	24.245	23.050	27.333	20.785	1'35.413	194,9	18:19'06.514
6	24.278	23.007	27.130	21.005	1'35.420	197,1	18:20'41.934
7	24.312	23.012	28.525	21.459	1'37.308	187,8	18:22'19.242
8	24.270	22.965	27.257	20.763	1'35.255	195,7	18:23'54.497
9	24.221	23.092	29.732	20.961	1'38.006	180,0	18:25'32.503
10	24.255	24.930	34.073	23.850	1'47.108	173,1	18:27'19.611
11	24.128	23.069	27.308	20.652	1'35.157	194,9	18:28'54.768
12	24.210	23.062	27.451	33.631	1'48.354P	195,3	18:30'43.122
13	5'13.305	41.622	44.643	24.079	7'03.649P	88,5	18:37'46.771
14	24.387	23.049	27.645	22.792	1'37.873	196,0	18:39'24.644
15	24.217	22.872	27.166	20.718	1'34.973	196,0	18:40'59.617
16	24.190	22.897	27.191	20.660	1'34.938	196,0	18:42'34.555

73 P. ARMANNI (1'35.689)							
Lap	Seg.1	Seg.2	Seg.3	Seg.4	Lap Time	km/h	Local Time
1							18:10'44.797
2	59.980	25.856	29.005	40.589	2'35.430P	188,5	18:13'20.227
3	43.471	24.521	29.117	1'45.467	3'22.576P	187,8	18:16'42.803
4	52.996	23.673	27.818	21.330	2'05.817P	192,9	18:18'48.620
5	24.621	23.333	27.743	21.480	1'37.177	193,5	18:20'25.797
6	24.348	23.211	28.477	21.144	1'37.180	194,6	18:22'02.977
7	24.455	23.183	27.691	21.248	1'36.577	194,2	18:23'39.554
8	24.420	23.210	27.656	21.025	1'36.311	193,9	18:25'15.865
9	24.301	23.185	27.415	21.158	1'36.059	194,9	18:26'51.924

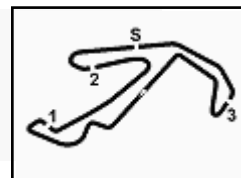
03/06/2021

P = Pits In/Out - C = Lap Time Cancelled



Powered by FICr PERUGIA TIMING





ACI Racing Weekend Misano, 5-6 Giugno 2021
Italian F4 Championship by Abarth - Chronological Analysis Free Practice 1

Misano Circuit Sic 58.4.226m

5 / 6

10	24.314	23.100	27.363	21.072	1'35.849	195,3	18:28'27.773
11	24.458	23.272	27.442	21.128	1'36.300	194,9	18:30'04.073
12	24.255	23.152	27.389	21.046	1'35.842	196,0	18:31'39.915
13	24.372	23.071	27.418	21.065	1'35.926	196,4	18:33'15.841
14	24.413	24.049	57.345	37.305	2'23.112	82,8	18:35'38.953
15	45.631	43.023	28.667	21.359	2'18.680	189,8	18:37'57.633
16	24.541	23.223	27.642	21.091	1'36.497	194,6	18:39'34.130
17	24.418	23.235	27.540	21.334	1'36.527	196,0	18:41'10.657
18	24.393	23.077	27.391	20.945	1'35.806	195,7	18:42'46.463
19	24.440	23.093	27.496	20.902	1'35.931	194,9	18:44'22.394
20	24.523	23.088	27.195	20.883	1'35.689	196,7	18:45'58.083
21	24.427	23.100	27.205	21.063	1'35.795	196,7	18:47'33.878
22	24.434	23.220	27.488	1'16.559	2'31.701P	196,0	18:50'05.579

86 B. VALINT (1'34.879)							
Lap	Seg.1	Seg.2	Seg.3	Seg.4	Lap Time	km/h	Local Time
1							18:10'34.108
2	1'03.570	25.258	30.169	22.352	2'21.349P	174,8	18:12'55.457
3	25.710	24.639	29.102	21.748	1'41.199	187,8	18:14'36.656
4	24.810	23.117	27.424	21.619	1'36.970	197,1	18:16'13.626
5	24.330	23.036	27.828	21.214	1'36.408	196,4	18:17'50.034
6	24.304	22.941	27.433	20.820	1'35.498	194,9	18:19'25.532
7	24.310	22.991	27.335	20.815	1'35.451	197,1	18:21'00.983
8	25.759	27.107	31.874	21.005	1'45.745	164,6	18:22'46.728
9	24.215	22.894	27.177	20.842	1'35.128	197,1	18:24'21.856
10	24.902	23.277	27.442	37.003	1'52.624P	196,4	18:26'14.480
11	3'57.330	28.572	32.883	23.122	5'21.907P	152,1	18:31'36.387
12	26.010	23.825	29.736	21.132	1'40.703	162,4	18:33'17.090
13	24.188	32.580	55.627	38.472	2'30.867	83,7	18:35'47.957
14	46.030	40.146	28.437	21.496	2'16.109	189,8	18:38'04.066
15	24.788	23.199	27.462	20.815	1'36.264	195,7	18:39'40.330
16	24.236	22.890	27.085	20.805	1'35.016	198,2	18:41'15.346
17	27.215	25.391	27.982	26.325	1'46.913	193,9	18:43'02.259
18	24.150	22.944	27.077	20.708	1'34.879	197,4	18:44'37.138
19	24.090	49.606	28.146	21.081	2'02.923	192,9	18:46'40.061
20	24.243	22.860	27.058	20.798	1'34.959	197,4	18:48'15.020
21	24.293	24.269	27.779	21.873	1'38.214	196,0	18:49'53.234
22	24.313	23.072	31.056	21.518	1'39.959	146,1	18:51'33.193

77 P. PERINO (1'35.822)							
Lap	Seg.1	Seg.2	Seg.3	Seg.4	Lap Time	km/h	Local Time
1							18:10'29.013
2	1'02.963	26.876	29.803	22.272	2'21.914P	189,8	18:12'50.927
3	25.182	23.776	28.683	21.782	1'39.423	190,8	18:14'30.350
4	24.791	23.729	27.996	21.226	1'37.742	193,5	18:16'08.092
5	24.736	23.327	27.854	21.247	1'37.164	193,5	18:17'45.256
6	24.597	23.331	27.637	21.270	1'36.835	192,9	18:19'22.091
7	24.566	23.136	27.527	21.016	1'36.245	193,5	18:20'58.336
8	24.577	23.114	27.476	21.134	1'36.301	193,2	18:22'34.637
9	24.451	23.179	27.949	23.250	1'38.829	192,9	18:24'13.466
10	24.497	23.103	27.387	21.150	1'36.137	194,2	18:25'49.603
11	24.540	23.324	27.603	6'39.789	7'55.256P	192,9	18:33'44.859
12	55.004	42.269	49.847	36.253	3'03.373P	110,7	18:36'48.232
13	34.799	24.562	29.530	21.399	1'50.290	189,8	18:38'38.522
14	24.761	23.305	28.214	21.350	1'37.630	196,4	18:40'16.152
15	24.546	23.130	27.614	20.908	1'36.198	194,6	18:41'52.350
16	24.582	23.093	27.472	21.045	1'36.192	196,0	18:43'28.542
17	24.395	23.076	27.343	21.023	1'35.837	196,4	18:45'04.379
18	24.691	23.522	27.788	21.082	1'37.083	198,5	18:46'41.462
19	24.520	23.152	27.283	21.007	1'35.962	196,7	18:48'17.424
20	24.500	23.297	27.456	21.114	1'36.367	196,7	18:49'53.791
21	24.516	22.982	27.400	20.924	1'35.822	195,7	18:51'29.613

87 O. BEARMAN (1'34.786)							
Lap	Seg.1	Seg.2	Seg.3	Seg.4	Lap Time	km/h	Local Time
1		25.043	29.793	34.671		192,9	18:13'02.372
2	2'50.300	24.359	28.519	48.083	4'31.261P	184,6	18:17'33.633
3	1'00.060	25.742	29.741	21.131	2'16.674P	176,2	18:19'50.307
4	24.310	22.960	27.323	20.824	1'35.417	195,7	18:21'25.724
5	24.193	23.007	27.182	20.738	1'35.120	195,3	18:23'00.844
6	24.135	22.954	32.042	21.875	1'41.006	196,4	18:24'41.850
7	24.191	22.978	27.268	20.948	1'35.385	194,6	18:26'17.235
8	24.140	23.016	27.265	20.640	1'35.061	195,7	18:27'52.296
9	24.207	23.018	27.285	21.112	1'35.622	195,3	18:29'27.918
10	24.840	23.017	27.291	35.558	1'50.706P	194,9	18:31'18.624
11	8'21.489	29.415	37.443	25.974	9'54.321P	140,6	18:41'12.945
12	29.150	30.824	38.695	24.169	2'02.838	98,4	18:43'15.783
13	24.501	23.078	27.170	20.826	1'35.575	195,7	18:44'51.358
14	24.091	23.040	33.763	21.938	1'42.832	188,2	18:46'34.190
15	24.381	22.925	27.042	20.624	1'34.972	196,4	18:48'09.162
16	24.011	23.095	27.013	20.667	1'34.786	196,7	18:49'43.948
17	24.116	22.873	27.062	20.783	1'34.834	196,7	18:51'18.782

83 M. WEUG (1'35.390)							
Lap	Seg.1	Seg.2	Seg.3	Seg.4	Lap Time	km/h	Local Time
1							18:10'38.859
2	59.851	25.413	29.963	40.861	2'36.088P	192,2	18:13'14.947
3	48.038	24.610	29.088	43.340	2'25.076P	189,8	18:15'40.023
4	52.060	26.175	30.252	44.144	2'32.631P	185,6	18:18'12.654
5	53.634	24.556	28.738	21.584	2'08.512P	191,2	18:20'21.166
6	25.025	23.672	27.919	21.183	1'37.799	194,2	18:21'58.965
7	24.941	23.251	27.775	21.109	1'37.076	193,9	18:23'36.041
8	24.508	23.188	28.307	21.108	1'37.111	193,2	18:25'13.152
9	25.175	23.447	27.782	21.127	1'37.531	195,3	18:26'50.683
10	24.546	23.236	27.569	21.022	1'36.373	194,9	18:28'27.056
11	24.289	23.231	27.571	21.045	1'36.136	194,6	18:30'03.192
12	24.404	23.120	27.643	21.001	1'36.168	195,3	18:31'39.360
13	24.375	23.178	27.484	21.026	1'36.063	195,7	18:33'15.423
14	24.518	24.450	58.217	38.177	2'25.362	86,0	18:35'40.785
15	46.835	42.435	29.010	21.786	2'20.066	188,5	18:38'00.851
16	24.700	23.509	27.838	21.205	1'37.252	195,7	18:39'38.103
17	24.525	23.705	27.620	21.165	1'37.015	195,7	18:41'15.118
18	24.559	23.208	27.344	20.835	1'35.946	196,7	18:42'51.064
19	24.266	23.031	27.321	20.940	1'35.558	196,0	18:44'26.622
20	24.285	22.946	27.316	20.843	1'35.390	196,4	18:46'02.012
21	25.154	23.521	27.643	21.089	1'37.407	196,4	18:47'39.419
22	24.308	23.221	27.335	20.974	1'35.838	196,4	18:49'15.257
23	24.290	23.020	27.301	20.859	1'35.470	196,4	18:50'50.727

88 H. AL QUBAIS (1'35.183)							
Lap	Seg.1	Seg.2	Seg.3	Seg.4	Lap Time	km/h	Local Time
1		24.987	28.805	22.019		189,5	18:13'26.654
2	25.170	23.580	29.740	23.060	1'41.550	185,2	18:15'08.204
3	24.808	23.637	29.658	21.551	1'39.654	194,6	18:16'47.858
4	24.717	23.256	27.516	20.976	1'36.465	194,9	18:18'24.323
5	24.375	23.094	27.504	20.959	1'35.932	194,6	18:20'00.255
6	24.500	23.111	27.249	20.905	1'35.765	196,4	18:21'36.020
7	24.337	23.168	27.408	20.910	1'35.823	194,6	18:23'11.843
8	24.256	23.082	27.382	20.822	1'35.542	194,6	18:24'47.385
9	24.416	23.024	27.254	20.742	1'35.436	195,3	18:26'22.821
10	24.225	22.966	27.312	20.933	1'35.436	196,0	18:27'58.257
11	24.365	23.065	27.446	36.304	1'51.180P	196,0	18:29'49.437
12	9'02.025	24.398	27.898	21.002	10'15.323P	192,5	18:40'04.760
13	24.541	23.027	27.497	22.036	1'37.101	195,7	18:41'41.861
14	24.460	23.253	27.443	20.861	1'36.017	196,4	18:43'17.878
15	24.343	23.361	27.276	20.874	1'35.854	196,7	18:44'53.732

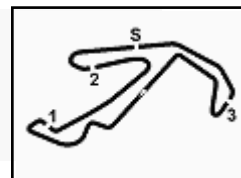
03/06/2021

P = Pits In/Out - C = Lap Time Cancelled



Powered by FICr PERUGIA TIMING





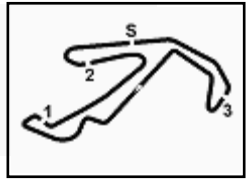
ACI Racing Weekend Misano, 5-6 Giugno 2021

Italian F4 Championship by Abarth - Chronological Analysis Free Practice 1

Misano Circuit Sic 58 4.226 m

16	24.233	22.965	27.209	20.776	1'35.183	197,1	18:46'28.915
17	24.185	22.935	27.264	21.016	1'35.400	197,1	18:48'04.315
18	24.296	23.034	27.178	20.715	1'35.223	196,7	18:49'39.538

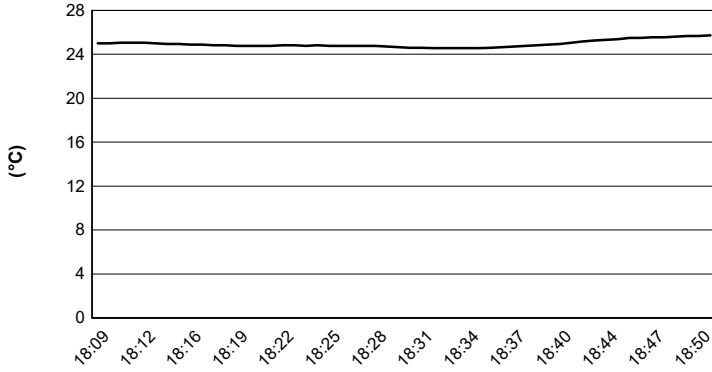




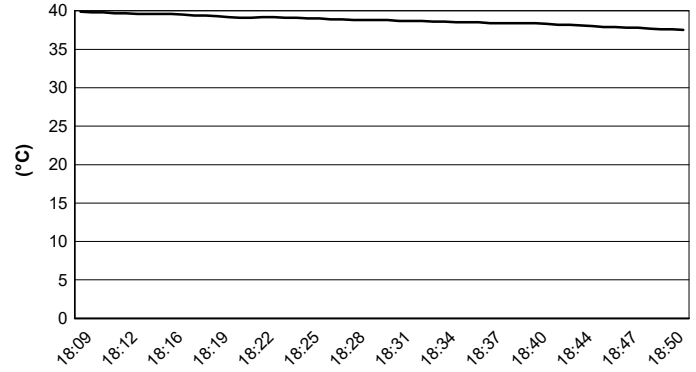
ACI Racing Weekend Misano, 5-6 Giugno 2021
Italian F4 Championship by Abarth - Weather Report Free Practice 1
Session started 18:10 - Session ended 18:51

Misano Circuit Sic 58 4.226 m

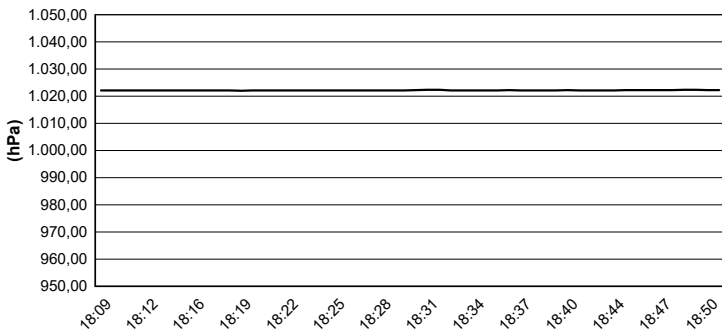
Air Temperature



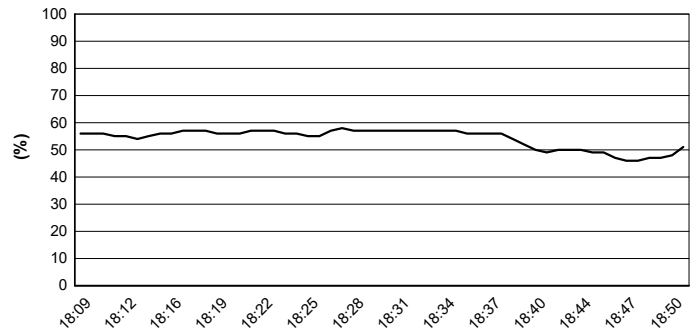
Track Temperature



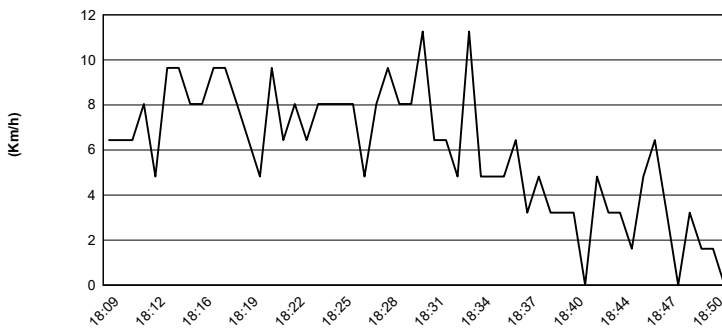
Air Pressure



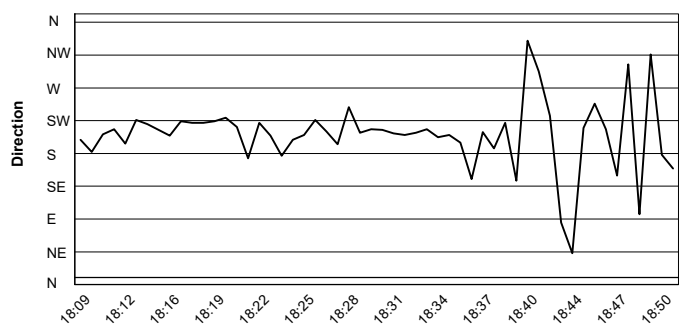
Humidity



Wind Speed



Wind Direction



03/06/2021

