

ACI Racing Weekend Misano, 5-6 Giugno 2021

Italian F4 Championship by Abarth - Result Qualifying 1

Misano Circuit Sic 58 4.226 m

No.	Driver	Nat	Entrant	Team	Car	Class	Time	Gap	Rel.	Laps
1	7 SMAL Kirill	RUS	Prema Powerteam	Prema Powerteam	Tatuus F4 T014 Abarth		1'34.455			8
2	72 FORNAROLI Leonardo	ITA	Iron Lynx	Iron Lynx	Tatuus F4 T014 Abarth		1'34.462	0.007	0.007	8
3	6 MONTTOYA Sebastian	COL	Prema Powerteam	Prema Powerteam	Tatuus F4 T014 Abarth		1'34.554	0.099	0.092	8
4	87 BEARMAN Oliver	GBR	Van Amersfoort Racing	Van Amersfoort Racing	Tatuus F4 T014 Abarth		1'34.572	0.117	0.018	8
5	88 AL QUBAISI Hamda	UAE	Prema Powerteam	Prema Powerteam	Tatuus F4 T014 Abarth		1'34.650	0.195	0.078	8
6	15 BEDRIN Nikita	RUS	Van Amersfoort Racing	Van Amersfoort Racing	Tatuus F4 T014 Abarth	R	1'34.822	0.367	0.172	8
7	55 BERNIER Victor	FRA	R-ACE GP	R-ACE GP	Tatuus F4 T014 Abarth		1'34.826	0.371	0.004	7
8	86 VALINT Bence	HUN	Van Amersfoort Racing	Van Amersfoort Racing	Tatuus F4 T014 Abarth		1'34.879	0.424	0.053	8
9	56 MEGUETOUNIF Sami	FRA	R-ACE GP	R-ACE GP	Tatuus F4 T014 Abarth		1'34.921	0.466	0.042	8
10	41 RIED Jonas	DEU	Muecke Motorsport	Muecke Motorsport	Tatuus F4 T014 Abarth	R	1'34.938	0.483	0.017	8
11	20 LAURSEN Conrad	DNK	Prema Powerteam	Prema Powerteam	Tatuus F4 T014 Abarth	R	1'34.969	0.514	0.031	9
12	12 PATRESE Lorenzo	ITA	AKM Motorsport	AKM Motorsport	Tatuus F4 T014 Abarth	R	1'34.976	0.521	0.007	9
13	13 DUF EK Joshua	AUT	Van Amersfoort Racing	Van Amersfoort Racing	Tatuus F4 T014 Abarth		1'35.154	0.699	0.178	8
14	37 SZTUKA Kacper	POL	AS Motorsport	AS Motorsport	Tatuus F4 T014 Abarth	R	1'35.169	0.714	0.015	8
15	35 BAPTISTE Nicolas	COL	Cram Motorsport	Cram Motorsport	Tatuus F4 T014 Abarth	R	1'35.195	0.740	0.026	9
16	17 BIZZOTTO Leonardo	ITA	BVM Racing	BVM Racing	Tatuus F4 T014 Abarth	R	1'35.256	0.801	0.061	8
17	83 WEUG Maya	BEL	Iron Lynx	Iron Lynx	Tatuus F4 T014 Abarth	R	1'35.364	0.909	0.108	8
18	25 BEN Samir	CHE	Jenzer Motorsport	Jenzer Motorsport	Tatuus F4 T014 Abarth	R	1'35.440	0.985	0.076	8
19	23 ZUNIGA Erick	MEX	Muecke Motorsport	Muecke Motorsport	Tatuus F4 T014 Abarth		1'35.450	0.995	0.010	8
20	24 WISNICKI Piotr	POL	Jenzer Motorsport	Jenzer Motorsport	Tatuus F4 T014 Abarth		1'35.465	1.010	0.015	8
21	28 BRASCHI Francesco	ITA	Jenzer Motorsport	Jenzer Motorsport	Tatuus F4 T014 Abarth	R	1'35.509	1.054	0.044	9
22	10 DÜRKSEN Joshua	PRY	Muecke Motorsport	Muecke Motorsport	Tatuus F4 T014 Abarth		1'35.514	1.059	0.005	8
23	11 REVESZ Levente	HUN	AKM Motorsport	AKM Motorsport	Tatuus F4 T014 Abarth	R	1'35.605	1.150	0.091	9
24	52 REXHEPI Eron	CHE	BVM Racing	BVM Racing	Tatuus F4 T014 Abarth	R	1'35.707	1.252	0.102	8
25	54 AMAND Marcus	FRA	R-ACE GP	R-ACE GP	Tatuus F4 T014 Abarth	R	1'35.720	1.265	0.013	7
26	77 PERINO Pedro	POR	DR Formula	DR Formula	Tatuus F4 T014 Abarth	R	1'35.811	1.356	0.091	8
27	73 ARMANNI Pietro	ITA	Iron Lynx	Iron Lynx	Tatuus F4 T014 Abarth	R	1'35.957	1.502	0.146	8
28	18 CENYU Han	CHN	Van Amersfoort Racing	Van Amersfoort Racing	Tatuus F4 T014 Abarth		1'36.070	1.615	0.113	4
29	27 GARCJARCE DAVILA Jorge	MEX	Jenzer Motorsport	Jenzer Motorsport	Tatuus F4 T014 Abarth		1'36.214	1.759	0.144	9

Qualifying Lap Time (110% of 1'34.490): 1'43.940

Humidity:	44%	AIR	27°C
Condition:	DRY	Temp:	37°C

Race Director : Fabrizio Fondacci

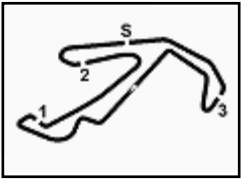
Clerk of the Course : Alessandro Ferrari

Start	End
04/06/2021 19:09	19:26



Powered by FICr PERUGIA TIMING





ACI Racing Weekend Misano, 5-6 Giugno 2021
Italian F4 Championship by Abarth - Best Sectors & Speed Qualifying 1

Misano Circuit Sic 58 4.226 m

BEST LAP

1	7	SMAL Kirill	Tatuus F4 T014 Abarth	1'34.455
2	72	FORNAROLI Leonardo	Tatuus F4 T014 Abarth	1'34.462
3	6	MONTOYA Sebastian	Tatuus F4 T014 Abarth	1'34.554
4	87	BEARMAN Oliver	Tatuus F4 T014 Abarth	1'34.572
5	88	AL QUBAIS I Hamda	Tatuus F4 T014 Abarth	1'34.650
6	15	BEDRIN Nikita	Tatuus F4 T014 Abarth	1'34.822
7	55	BERNIER Victor	Tatuus F4 T014 Abarth	1'34.826
8	86	VALINT Bence	Tatuus F4 T014 Abarth	1'34.879
9	56	MEGUETOUNIF Sami	Tatuus F4 T014 Abarth	1'34.921
10	41	RIED Jonas	Tatuus F4 T014 Abarth	1'34.938
11	20	LAURSEN Conrad	Tatuus F4 T014 Abarth	1'34.969
12	12	PATRESE Lorenzo	Tatuus F4 T014 Abarth	1'34.976
13	13	DUFEK Joshua	Tatuus F4 T014 Abarth	1'35.154
14	37	SZTUKA Kacper	Tatuus F4 T014 Abarth	1'35.169
15	35	BAPTISTE Nicolas	Tatuus F4 T014 Abarth	1'35.195
16	17	BIZZOTTO Leonardo	Tatuus F4 T014 Abarth	1'35.256
17	83	WEUG Maya	Tatuus F4 T014 Abarth	1'35.364
18	25	BEN Samir	Tatuus F4 T014 Abarth	1'35.440
19	23	ZUNIGA Erick	Tatuus F4 T014 Abarth	1'35.450
20	24	WISNICKI Piotr	Tatuus F4 T014 Abarth	1'35.465
21	28	BRASCHI Francesco	Tatuus F4 T014 Abarth	1'35.509
22	10	DÜR KSEN Joshua	Tatuus F4 T014 Abarth	1'35.514
23	11	REVESZ Levente	Tatuus F4 T014 Abarth	1'35.605
24	52	REXHEPI Eron	Tatuus F4 T014 Abarth	1'35.707
25	54	AMAND Marcus	Tatuus F4 T014 Abarth	1'35.720
26	77	PERINO Pedro	Tatuus F4 T014 Abarth	1'35.811
27	73	ARMANNI Pietro	Tatuus F4 T014 Abarth	1'35.957
28	18	CENYU Han	Tatuus F4 T014 Abarth	1'36.070
29	27	GARCJARCE DAVILA Jorge	Tatuus F4 T014 Abarth	1'36.214

SPEED

1	17	BIZZOTTO Leonardo	Tatuus F4 T014 Abarth	199,3
2	25	BEN Samir	Tatuus F4 T014 Abarth	198,5
3	41	RIED Jonas	Tatuus F4 T014 Abarth	198,5
4	24	WISNICKI Piotr	Tatuus F4 T014 Abarth	198,2
5	73	ARMANNI Pietro	Tatuus F4 T014 Abarth	198,2
6	72	FORNAROLI Leonardo	Tatuus F4 T014 Abarth	198,2
7	28	BRASCHI Francesco	Tatuus F4 T014 Abarth	198,2
8	35	BAPTISTE Nicolas	Tatuus F4 T014 Abarth	197,8
9	83	WEUG Maya	Tatuus F4 T014 Abarth	197,8
10	7	SMAL Kirill	Tatuus F4 T014 Abarth	197,4
11	20	LAURSEN Conrad	Tatuus F4 T014 Abarth	197,4
12	77	PERINO Pedro	Tatuus F4 T014 Abarth	197,4
13	88	AL QUBAIS I Hamda	Tatuus F4 T014 Abarth	197,4
14	55	BERNIER Victor	Tatuus F4 T014 Abarth	197,1
15	13	DUFEK Joshua	Tatuus F4 T014 Abarth	197,1
16	6	MONTOYA Sebastian	Tatuus F4 T014 Abarth	196,7
17	86	VALINT Bence	Tatuus F4 T014 Abarth	196,7
18	27	GARCJARCE DAVILA Jorge	Tatuus F4 T014 Abarth	196,7
19	37	SZTUKA Kacper	Tatuus F4 T014 Abarth	196,7
20	87	BEARMAN Oliver	Tatuus F4 T014 Abarth	196,7
21	23	ZUNIGA Erick	Tatuus F4 T014 Abarth	196,7
22	56	MEGUETOUNIF Sami	Tatuus F4 T014 Abarth	196,4
23	52	REXHEPI Eron	Tatuus F4 T014 Abarth	196,4
24	12	PATRESE Lorenzo	Tatuus F4 T014 Abarth	196,0
25	15	BEDRIN Nikita	Tatuus F4 T014 Abarth	196,0
26	11	REVESZ Levente	Tatuus F4 T014 Abarth	196,0
27	18	CENYU Han	Tatuus F4 T014 Abarth	195,3
28	10	DÜR KSEN Joshua	Tatuus F4 T014 Abarth	194,9
29	54	AMAND Marcus	Tatuus F4 T014 Abarth	193,9

SEG. 1

1	7	SMAL Kirill	23.982
2	55	BERNIER Victor	24.014
3	6	MONTOYA Sebastian	24.036
4	87	BEARMAN Oliver	24.070
5	72	FORNAROLI Leonardo	24.075
6	86	VALINT Bence	24.081
7	56	MEGUETOUNIF Sami	24.082
8	37	SZTUKA Kacper	24.122
9	15	BEDRIN Nikita	24.122
10	35	BAPTISTE Nicolas	24.129
11	12	PATRESE Lorenzo	24.142
12	20	LAURSEN Conrad	24.143
13	41	RIED Jonas	24.151
14	83	WEUG Maya	24.177
15	88	AL QUBAIS I Hamda	24.187
16	24	WISNICKI Piotr	24.193
17	17	BIZZOTTO Leonardo	24.204
18	10	DÜR KSEN Joshua	24.215
19	23	ZUNIGA Erick	24.240
20	25	BEN Samir	24.257
21	13	DUFEK Joshua	24.262
22	54	AMAND Marcus	24.291
23	73	ARMANNI Pietro	24.300
24	52	REXHEPI Eron	24.317
25	28	BRASCHI Francesco	24.326
26	11	REVESZ Levente	24.344
27	77	PERINO Pedro	24.382
28	27	GARCJARCE DAVILA J	24.413
29	18	CENYU Han	24.560

SEG. 2

1	72	FORNAROLI Leonardo	22.785
2	87	BEARMAN Oliver	22.795
3	7	SMAL Kirill	22.823
4	13	DUFEK Joshua	22.830
5	88	AL QUBAIS I Hamda	22.837
6	6	MONTOYA Sebastian	22.866
7	41	RIED Jonas	22.904
8	12	PATRESE Lorenzo	22.909
9	20	LAURSEN Conrad	22.913
10	35	BAPTISTE Nicolas	22.915
11	15	BEDRIN Nikita	22.926
12	55	BERNIER Victor	22.931
13	56	MEGUETOUNIF Sami	22.938
14	17	BIZZOTTO Leonardo	22.956
15	86	VALINT Bence	22.962
16	24	WISNICKI Piotr	22.974
17	25	BEN Samir	22.983
18	83	WEUG Maya	22.999
19	37	SZTUKA Kacper	23.009
20	18	CENYU Han	23.027
21	23	ZUNIGA Erick	23.045
22	28	BRASCHI Francesco	23.076
23	11	REVESZ Levente	23.084
24	77	PERINO Pedro	23.108
25	10	DÜR KSEN Joshua	23.116
26	52	REXHEPI Eron	23.126
27	73	ARMANNI Pietro	23.130
28	27	GARCJARCE DAVILA J	23.142
29	54	AMAND Marcus	23.180

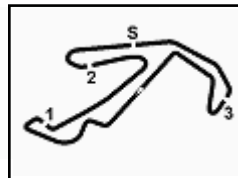
SEG. 3

1	6	MONTOYA Sebastian	26.979
2	72	FORNAROLI Leonardo	27.017
3	88	AL QUBAIS I Hamda	27.034
4	41	RIED Jonas	27.035
5	35	BAPTISTE Nicolas	27.048
6	87	BEARMAN Oliver	27.059
7	86	VALINT Bence	27.068
8	24	WISNICKI Piotr	27.075
9	7	SMAL Kirill	27.088
10	20	LAURSEN Conrad	27.108
11	15	BEDRIN Nikita	27.127
12	73	ARMANNI Pietro	27.148
13	12	PATRESE Lorenzo	27.166
14	55	BERNIER Victor	27.174
15	17	BIZZOTTO Leonardo	27.191
16	28	BRASCHI Francesco	27.192
17	56	MEGUETOUNIF Sami	27.209
18	11	REVESZ Levente	27.213
19	37	SZTUKA Kacper	27.218
20	25	BEN Samir	27.226
21	13	DUFEK Joshua	27.247
22	23	ZUNIGA Erick	27.261
23	10	DÜR KSEN Joshua	27.288
24	77	PERINO Pedro	27.294
25	54	AMAND Marcus	27.372
26	83	WEUG Maya	27.382
27	52	REXHEPI Eron	27.385
28	27	GARCJARCE DAVILA J	27.445
29	18	CENYU Han	27.566

SEG. 4

1	72	FORNAROLI Leonardo	20.551
2	7	SMAL Kirill	20.560
3	87	BEARMAN Oliver	20.566
4	88	AL QUBAIS I Hamda	20.592
5	56	MEGUETOUNIF Sami	20.620
6	20	LAURSEN Conrad	20.637
7	15	BEDRIN Nikita	20.647
8	13	DUFEK Joshua	20.649
9	12	PATRESE Lorenzo	20.649
10	6	MONTOYA Sebastian	20.652
11	55	BERNIER Victor	20.658
12	41	RIED Jonas	20.734
13	86	VALINT Bence	20.746
14	37	SZTUKA Kacper	20.756
15	17	BIZZOTTO Leonardo	20.797
16	83	WEUG Maya	20.799
17	23	ZUNIGA Erick	20.809
18	28	BRASCHI Francesco	20.824
19	35	BAPTISTE Nicolas	20.842
20	10	DÜR KSEN Joshua	20.843
21	11	REVESZ Levente	20.852
22	25	BEN Samir	20.862
23	52	REXHEPI Eron	20.876
24	54	AMAND Marcus	20.877
25	24	WISNICKI Piotr	20.903
26	18	CENYU Han	20.917
27	73	ARMANNI Pietro	20.922
28	77	PERINO Pedro	20.936
29	27	GARCJARCE DAVILA J	20.942





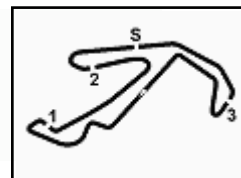
ACI Racing Weekend Misano, 5-6 Giugno 2021

Italian F4 Championship by Abarth - Ideal Time Qualifying 1

Misano Circuit Sic 58 4.226 m

No. Driver	Car	Seg. 1 Diff. 1	Seg. 2 Diff. 2	Seg. 3 Diff. 3	Seg. 4 Diff. 4	Ideal Time		
						Best Lap	Pos.	Diff.
1 72 FORNAROLI L. (ITA)	Tatuus F4 T014 Abarth	24.075	22.785	27.017 +0.034	20.551	1'34.428 1'34.462	2	0.034
2 7 SMAL K. (RUS)	Tatuus F4 T014 Abarth	23.982	22.823	27.088 +0.002	20.560	1'34.453 1'34.455	1	0.002
3 87 BEARMAN O. (GBR)	Tatuus F4 T014 Abarth	24.070 +0.041	22.795	27.059 +0.015	20.566 +0.026	1'34.490 1'34.572	4	0.082
4 6 MONTOYA S. (COL)	Tatuus F4 T014 Abarth	24.036 +0.009	22.866	26.979	20.652 +0.012	1'34.533 1'34.554	3	0.021
5 88 AL QUBAISI H. (UAE)	Tatuus F4 T014 Abarth	24.187	22.837	27.034	20.592	1'34.650 1'34.650	5	
6 55 BERNIER V. (FRA)	Tatuus F4 T014 Abarth	24.014	22.931 +0.024	27.174 +0.025	20.658	1'34.777 1'34.826	7	0.049
7 20 LAURSEN C. (DNK)	Tatuus F4 T014 Abarth	24.143 +0.005	22.913 +0.036	27.108	20.637 +0.127	1'34.801 1'34.969	11	0.168
8 15 BEDRIN N. (RUS)	Tatuus F4 T014 Abarth	24.122	22.926	27.127	20.647	1'34.822 1'34.822	6	
9 41 RIED J. (DEU)	Tatuus F4 T014 Abarth	24.151 +0.037	22.904 +0.020	27.035	20.734 +0.057	1'34.824 1'34.938	10	0.114
10 56 MEGUETOUNIF S. (FRA)	Tatuus F4 T014 Abarth	24.082	22.938 +0.010	27.209 +0.062	20.620	1'34.849 1'34.921	9	0.072
11 86 VALINT B. (HUN)	Tatuus F4 T014 Abarth	24.081 +0.022	22.962	27.068	20.746	1'34.857 1'34.879	8	0.022
12 12 PATRESE L. (ITA)	Tatuus F4 T014 Abarth	24.142	22.909	27.166 +0.110	20.649	1'34.866 1'34.976	12	0.110
13 35 BAPTISTE N. (COL)	Tatuus F4 T014 Abarth	24.129	22.915	27.048 +0.193	20.842 +0.068	1'34.934 1'35.195	15	0.261
14 13 DUFEK J. (AUT)	Tatuus F4 T014 Abarth	24.262	22.830 +0.081	27.247 +0.066	20.649 +0.019	1'34.988 1'35.154	13	0.166
15 37 SZTUKA K. (POL)	Tatuus F4 T014 Abarth	24.122 +0.036	23.009 +0.027	27.218 +0.001	20.756	1'35.105 1'35.169	14	0.064
16 24 WISNICKI P. (POL)	Tatuus F4 T014 Abarth	24.193 +0.149	22.974	27.075 +0.171	20.903	1'35.145 1'35.465	20	0.320
17 17 BIZZOTTO L. (ITA)	Tatuus F4 T014 Abarth	24.204 +0.005	22.956	27.191 +0.007	20.797 +0.096	1'35.148 1'35.256	16	0.108
18 25 BEN S. (CHE)	Tatuus F4 T014 Abarth	24.257	22.983 +0.093	27.226	20.862 +0.019	1'35.328 1'35.440	18	0.112
19 23 ZUNIGA E. (MEX)	Tatuus F4 T014 Abarth	24.240	23.045	27.261	20.809 +0.095	1'35.355 1'35.450	19	0.095
20 83 WEUG M. (BEL)	Tatuus F4 T014 Abarth	24.177 +0.007	22.999	27.382	20.799	1'35.357 1'35.364	17	0.007
21 28 BRASCHI F. (ITA)	Tatuus F4 T014 Abarth	24.326	23.076	27.192	20.824 +0.091	1'35.418 1'35.509	21	0.091
22 10 DÜRKSEN J. (PRY)	Tatuus F4 T014 Abarth	24.215 +0.052	23.116	27.288	20.843	1'35.462 1'35.514	22	0.052
23 11 REVESZ L. (HUN)	Tatuus F4 T014 Abarth	24.344	23.084 +0.112	27.213	20.852	1'35.493 1'35.605	23	0.112
24 73 ARMANNI P. (ITA)	Tatuus F4 T014 Abarth	24.300 +0.144	23.130	27.148 +0.313	20.922	1'35.500 1'35.957	27	0.457
25 52 REXHEPI E. (CHE)	Tatuus F4 T014 Abarth	24.317	23.126 +0.003	27.385	20.876	1'35.704 1'35.707	24	0.003
26 54 AMAND M. (FRA)	Tatuus F4 T014 Abarth	24.291	23.180	27.372	20.877	1'35.720 1'35.720	25	
27 77 PERINO P. (POR)	Tatuus F4 T014 Abarth	24.382	23.108	27.294 +0.091	20.936	1'35.720 1'35.811	26	0.091
28 27 GARCJARCE DAVILA J	Tatuus F4 T014 Abarth	24.413 +0.088	23.142 +0.110	27.445 +0.074	20.942	1'35.942 1'36.214	29	0.272
29 18 CENYU H. (CHN)	Tatuus F4 T014 Abarth	24.560	23.027	27.566	20.917	1'36.070 1'36.070	28	
Overall Ideal Time		23.982	22.785	26.979	20.551	1'34.297		





ACI Racing Weekend Misano, 5-6 Giugno 2021
Italian F4 Championship by Abarth - Chronological Analysis Qualifying 1

Misano Circuit Sic 58.4.226m

1 / 3

6 S. MONTOYA (1'34.554)								13 J. DUFEK (1'35.154)							
Lap	Seg.1	Seg.2	Seg.3	Seg.4	Lap Time	km/h	Local Time	Lap	Seg.1	Seg.2	Seg.3	Seg.4	Lap Time	km/h	Local Time
1		25.624	28.835	21.663		190,8	19:11'57.826	1		27.077	30.957	22.079		166,4	19:13'30.426
2	24.771	23.444	28.900	20.959	1'38.074	188,5	19:13'35.900	2	25.579	23.751	28.335	21.461	1'39.126	186,5	19:15'09.552
3	24.673	25.500	31.078	20.880	1'42.131	167,2	19:15'18.031	3	24.627	22.986	27.491	20.869	1'35.973	195,7	19:16'45.525
4	24.186	23.024	27.158	20.653	1'35.021	196,7	19:16'53.052	4	24.381	22.934	27.401	20.649	1'35.365	195,7	19:18'20.890
5	24.036	22.936	27.129	20.710	1'34.811	196,4	19:18'27.863	5	24.266	22.949	27.247	21.412	1'35.874	197,1	19:19'56.764
6	28.608	31.330	41.167	23.035	2'04.140	129,3	19:20'32.003	6	25.112	23.276	27.476	20.817	1'36.681	195,7	19:21'33.445
7	24.190	22.968	27.060	23.016	1'37.234	196,7	19:22'09.237	7	24.262	22.911	27.313	20.668	1'35.154	196,0	19:23'08.599
8	24.181	22.934	27.103	20.652	1'34.870	196,0	19:23'44.107	8	24.300	22.830	27.344	20.689	1'35.163	195,3	19:24'43.762
9	24.045	22.866	26.979	20.664	1'34.554	196,7	19:25'18.661	9	24.531	22.959	27.487	37.350	1'52.327P	195,3	19:26'36.089

7 K. SMAL (1'34.455)								15 N. BEDRIN (1'34.822)							
Lap	Seg.1	Seg.2	Seg.3	Seg.4	Lap Time	km/h	Local Time	Lap	Seg.1	Seg.2	Seg.3	Seg.4	Lap Time	km/h	Local Time
1		25.148	29.270	21.857		188,8	19:12'04.485	1		25.775	29.867	22.364		180,6	19:12'15.427
2	25.632	23.751	27.749	21.070	1'38.202	196,0	19:13'42.687	2	25.704	24.202	28.756	21.877	1'40.539	187,5	19:13'55.966
3	24.453	23.211	27.448	22.716	1'37.828	197,1	19:15'20.515	3	24.729	23.236	27.689	21.014	1'36.668	194,2	19:15'32.634
4	24.122	23.011	27.144	20.762	1'35.039	197,4	19:16'55.554	4	24.385	23.073	27.429	21.988	1'36.875	195,7	19:17'09.509
5	24.197	22.892	27.157	20.659	1'34.905	196,7	19:18'30.459	5	24.566	23.060	27.366	20.881	1'35.873	195,3	19:18'45.382
6	24.174	22.950	33.511	22.744	1'43.379	159,1	19:20'13.838	6	24.123	23.001	27.292	20.744	1'35.160	196,0	19:20'20.542
7	24.066	22.913	27.088	20.607	1'34.674	196,7	19:21'48.512	7	26.865	28.521	29.934	21.119	1'46.439	187,5	19:22'06.981
8	24.073	22.961	27.436	20.728	1'35.198	196,4	19:23'23.710	8	24.223	22.946	27.166	21.734	1'36.069	195,3	19:23'43.050
9	23.982	22.823	27.090	20.560	1'34.455	196,4	19:24'58.165	9	24.122	22.926	27.127	20.647	1'34.822	195,7	19:25'17.872

10 J. DÜRKSEN (1'35.514)								17 L. BIZZOTTO (1'35.256)							
Lap	Seg.1	Seg.2	Seg.3	Seg.4	Lap Time	km/h	Local Time	Lap	Seg.1	Seg.2	Seg.3	Seg.4	Lap Time	km/h	Local Time
1		28.564	30.457	21.776		182,4	19:12'54.898	1		26.549	29.963	22.488		187,8	19:12'59.182
2	25.004	24.851	29.809	21.218	1'40.882	153,6	19:14'35.780	2	25.706	24.152	28.068	21.090	1'39.016	192,2	19:14'38.198
3	25.009	23.487	28.925	22.631	1'40.052	193,2	19:16'15.832	3	24.511	23.585	28.220	22.129	1'38.445	195,7	19:16'16.643
4	24.430	23.286			2'02.637	193,5	19:18'18.469	4	24.395	22.971	27.597	21.107	1'36.070	199,3	19:17'52.713
5	25.573	23.209	27.519	20.958	1'37.259	194,6	19:19'55.728	5	24.276	23.074	27.281	20.797	1'35.428	196,7	19:19'28.141
6	24.351	23.161	27.345	20.904	1'35.761	193,9	19:21'31.489	6	24.204	23.043	27.191	20.856	1'35.294	197,4	19:21'03.435
7	24.215	23.184	27.477	20.901	1'35.777	193,5	19:23'07.266	7	24.209	22.956	27.198	20.893	1'35.256	197,8	19:22'38.691
8	24.267	23.116	27.288	20.843	1'35.514	193,9	19:24'42.780	8	24.294	23.060	27.444	21.263	1'36.061	197,4	19:24'14.752
9	26.211	23.216	27.506	38.269	1'55.202P	194,9	19:26'37.982	9	24.268	23.060	27.298	36.773	1'51.399P	196,0	19:26'06.151

11 L. REVESZ (1'35.605)								18 H. CENYU (1'36.070)							
Lap	Seg.1	Seg.2	Seg.3	Seg.4	Lap Time	km/h	Local Time	Lap	Seg.1	Seg.2	Seg.3	Seg.4	Lap Time	km/h	Local Time
1							19:10'19.375	1		27.979	32.357	23.492		174,5	19:13'07.804
2	46.983	28.953	34.893	24.187	2'15.016P	140,8	19:12'34.391	2	27.607	24.363	28.972	21.842	1'42.784	191,2	19:14'50.588
3	28.054	24.918	28.322	21.350	1'42.644	190,1	19:14'17.035	3	25.420	23.442	28.236	21.095	1'38.193	191,8	19:16'28.781
4	24.658	23.277	27.589	21.063	1'36.587	195,3	19:15'53.622	4	24.560	23.027	27.566	20.917	1'36.070	195,3	19:18'04.851
5	24.667	23.217	27.666	20.968	1'36.518	194,6	19:17'30.140	5	27.326	42.520	1'05.388	50.860	3'06.094P	71,0	19:21'10.945
6	24.471	23.102	27.653	21.046	1'36.272	193,5	19:19'06.412								
7	24.446	23.161	27.463	21.094	1'36.164	194,9	19:20'42.576								
8	24.350	23.095	27.299	20.918	1'35.662	195,3	19:22'18.238								
9	24.456	23.084	27.237	21.073	1'35.850	195,7	19:23'54.088								
10	24.344	23.196	27.213	20.852	1'35.605	196,0	19:25'29.693								

12 L. PATRESE (1'34.976)								20 C. LAURSEN (1'34.969)							
Lap	Seg.1	Seg.2	Seg.3	Seg.4	Lap Time	km/h	Local Time	Lap	Seg.1	Seg.2	Seg.3	Seg.4	Lap Time	km/h	Local Time
1							19:10'51.649	1		25.123	29.664	21.848		189,8	19:12'07.399
2	51.712	26.808	29.843	22.471	2'10.834P	188,8	19:13'02.483	2	25.466	23.679	28.059	23.096	1'40.300	196,4	19:13'47.699
3	26.028	25.053	28.110	21.108	1'40.299	192,5	19:14'42.782	3	24.436	23.388	27.490	21.984	1'37.298	197,1	19:15'24.997
4	24.722	23.543	27.735	21.112	1'37.112	196,0	19:16'19.894	4	24.514	23.248	27.500	21.482	1'36.744	197,4	19:17'01.741
5	24.313	23.076	27.474	20.738	1'35.601	196,0	19:17'55.495	5	24.148	22.949	27.108	20.764	1'34.969	197,1	19:18'36.710
6	24.285	22.974	27.338	20.674	1'35.271	196,0	19:19'30.766	6	24.383	25.385	28.522	21.114	1'39.404	196,0	19:20'16.114
7	24.252	22.961	27.261	20.916	1'35.390	196,0	19:21'06.156	7	24.247	23.001	27.124	20.637	1'35.009	196,7	19:21'51.123
8	24.142	22.909	27.276	20.649	1'34.976	196,0	19:22'41.132	8	24.148	22.933	27.128	20.787	1'34.996	197,1	19:23'26.119
9	25.580	23.836	28.280	21.042	1'38.738	194,9	19:24'19.870	9	24.399	23.508	27.506	20.816	1'36.229	196,4	19:25'02.348
10	24.411	22.975	27.166	20.748	1'35.300	196,0	19:25'55.170	10	24.143	22.913	27.248	21.294	1'35.598	196,7	19:26'37.946

23 E. ZUNIGA (1'35.450)							
Lap	Seg.1	Seg.2	Seg.3	Seg.4	Lap Time	km/h	Local Time
1							19:12'55.825
2	25.132	24.698	29.777	21.232	1'40.839	163,1	19:14'36.664
3	24.592	23.403	27.565	21.227	1'36.787	196,7	19:16'13.451

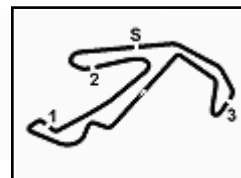
04/06/2021

P = Pits In/Out - C = Lap Time Cancelled



Powered by FICr PERUGIA TIMING





ACI Racing Weekend Misano, 5-6 Giugno 2021

Italian F4 Championship by Abarth - Chronological Analysis Qualifying 1

Misano Circuit Sic 58 4.226 m

2 / 3

4	24.417	23.231	27.509	20.958	1'36.115	194,9	19:17'49.566	4	24.420	23.226	27.301	20.959	1'35.906	197,1	19:17'05.418
5	24.354	23.245	27.456	20.895	1'35.950	194,9	19:19'25.516	5	24.410	22.957	27.321	20.842	1'35.530	197,1	19:18'40.948
6	24.381	23.199	27.433	20.945	1'35.958	194,6	19:21'01.474	6	24.313	23.406	28.097	20.878	1'36.694	189,5	19:20'17.642
7	24.324	23.071	27.376	20.985	1'35.756	195,3	19:22'37.230	7	24.255	22.994	27.208	20.876	1'35.333	196,0	19:21'52.975
8	24.240	23.045	27.261	20.904	1'35.450	195,3	19:24'12.680	8	24.186	22.961	27.264	20.852	1'35.263	196,0	19:23'28.238
9	24.279	23.141	27.346	20.809	1'35.575	194,6	19:25'48.255	9	24.129	22.915	27.241	20.910	1'35.195	196,7	19:25'03.433
								10	24.221	22.963	27.048	21.032	1'35.264	197,1	19:26'38.697

24 P. WISNICKI (1'35.465)

Lap	Seg.1	Seg.2	Seg.3	Seg.4	Lap Time	km/h	Local Time
1							19:09'41.674
2	1'20.283	25.951	30.206	26.548	2'42.988P	182,7	19:12'24.662
3	24.989	23.682	27.729	21.466	1'37.866	195,3	19:14'02.528
4	24.530	23.427	27.624	21.127	1'36.708	197,1	19:15'39.236
5	24.342	22.974	27.246	20.903	1'35.465	198,2	19:17'14.701
6	24.193	23.065	27.160	21.519	1'35.937	197,8	19:18'50.638
7	25.621	27.392	29.825	21.530	1'44.368	185,6	19:20'35.006
8	24.193	23.150	27.075	21.916	1'36.334	198,2	19:22'11.340
9	24.208	23.216	31.827	21.699	1'40.950	183,4	19:23'52.290

37 K. SZTUKA (1'35.169)

Lap	Seg.1	Seg.2	Seg.3	Seg.4	Lap Time	km/h	Local Time
1							19:13'14.898
2	26.448	24.986	29.807	21.527	1'42.768	188,5	19:14'57.666
3	24.599	23.325	27.623	21.001	1'36.548	194,9	19:16'34.214
4	24.241	23.041	27.625	20.957	1'35.864	196,0	19:18'10.078
5	24.254	23.088	27.218	20.856	1'35.416	196,0	19:19'45.494
6	24.306	23.009	27.280	20.878	1'35.473	196,4	19:21'20.967
7	24.167	23.094	27.235	20.898	1'35.394	196,7	19:22'56.361
8	24.122	23.044	27.313	20.796	1'35.275	195,7	19:24'31.636
9	24.158	23.036	27.219	20.756	1'35.169	196,0	19:26'06.805

25 S. BEN (1'35.440)

Lap	Seg.1	Seg.2	Seg.3	Seg.4	Lap Time	km/h	Local Time
1							19:11'29.155
2	44.370	25.749	30.691	22.285	2'03.095P	170,6	19:13'32.250
3	25.593	24.250	27.749	21.069	1'38.661	194,2	19:15'10.911
4	25.321	24.581	28.641	20.985	1'39.528	184,9	19:16'50.439
5	24.555	23.087	27.315	20.886	1'35.843	198,2	19:18'26.282
6	24.423	23.150	27.457	21.172	1'36.202	198,5	19:20'02.484
7	24.558	23.200	27.881	20.862	1'36.501	197,4	19:21'38.985
8	24.257	23.076	27.226	20.881	1'35.440	198,5	19:23'14.425
9	24.327	22.983	27.557	20.887	1'35.754	198,2	19:24'50.179

41 J. RIED (1'34.938)

Lap	Seg.1	Seg.2	Seg.3	Seg.4	Lap Time	km/h	Local Time
1							19:13'45.726
2	26.094	24.794	28.948	21.416	1'41.252	185,9	19:15'26.978
3	24.843	23.397	27.595	21.082	1'36.917	196,7	19:17'03.895
4	24.614	23.249	30.201	20.840	1'38.904	183,1	19:18'42.799
5	24.313	23.146	27.259	20.810	1'35.528	197,8	19:20'18.327
6	24.422	22.981	27.151	20.737	1'35.291	197,1	19:21'53.618
7	24.151	22.949	27.303	20.778	1'35.181	196,7	19:23'28.799
8	24.269	22.904	27.221	20.734	1'35.128	196,7	19:25'03.927
9	24.188	22.924	27.035	20.791	1'34.938	198,5	19:26'38.865

27 J. GARCJARCE DAVILA (1'36.214)

Lap	Seg.1	Seg.2	Seg.3	Seg.4	Lap Time	km/h	Local Time
1							19:10'13.448
2	50.888	28.774	34.428	24.542	2'18.632P	148,4	19:12'32.080
3	29.956	26.429	28.766	21.494	1'46.645	187,5	19:14'18.725
4	24.801	23.425	27.842	21.119	1'37.187	194,9	19:15'55.912
5	24.614	23.207	27.688	20.973	1'36.482	195,3	19:17'32.394
6	24.622	23.526	28.137	21.083	1'37.368	195,3	19:19'09.762
7	24.520	23.276	27.495	21.070	1'36.361	196,0	19:20'46.123
8	24.501	23.252	27.519	20.942	1'36.214	196,7	19:22'22.337
9	24.413	23.142	27.508	21.686	1'36.749	195,7	19:23'59.086
10	24.512	23.152	27.445	21.118	1'36.227	196,4	19:25'35.313

52 E. REXHEPI (1'35.707)

Lap	Seg.1	Seg.2	Seg.3	Seg.4	Lap Time	km/h	Local Time
1							19:13'28.402
2	26.093	25.256	28.571	22.280	1'42.200	184,9	19:15'10.602
3	25.420	24.203	27.892	21.242	1'38.757	195,3	19:16'49.359
4	24.483	23.194	27.528	21.029	1'36.234	196,4	19:18'25.593
5	24.525	23.402	27.495	21.106	1'36.528	195,3	19:20'02.121
6	24.462	23.179	27.441	20.981	1'36.063	196,0	19:21'38.184
7	24.352	23.126	27.516	20.879	1'35.873	195,3	19:23'14.057
8	24.317	23.129	27.385	20.876	1'35.707	195,7	19:24'49.764
9	24.739	23.280	27.632	35.947	1'51.598P	194,6	19:26'41.362

28 F. BRASCHI (1'35.509)

Lap	Seg.1	Seg.2	Seg.3	Seg.4	Lap Time	km/h	Local Time
1							19:11'27.979
2	44.467	25.727	31.084	21.951	2'03.229P	175,0	19:13'31.208
3	25.634	23.982	27.661	21.662	1'38.939	197,4	19:15'10.147
4	25.080	23.210	27.354	20.935	1'36.579	197,8	19:16'46.726
5	24.407	23.281	27.351	20.834	1'35.873	197,4	19:18'22.599
6	24.447	23.155	27.344	20.877	1'35.823	197,1	19:19'58.422
7	24.525	23.230	27.379	20.892	1'36.026	197,8	19:21'34.448
8	24.387	23.171	27.224	20.910	1'35.692	197,1	19:23'10.140
9	24.358	23.126	27.282	20.824	1'35.590	196,7	19:24'45.730
10	24.326	23.076	27.192	20.915	1'35.509	198,2	19:26'21.239

54 M. AMAND (1'35.720)

Lap	Seg.1	Seg.2	Seg.3	Seg.4	Lap Time	km/h	Local Time
1							19:13'44.228
2	26.254	25.554	28.583	21.869	1'42.260	187,5	19:15'26.488
3	24.779	23.409	27.713	21.118	1'37.019	193,9	19:17'03.507
4	24.523	23.248	27.534	21.010	1'36.315	193,5	19:18'39.822
5	25.118	26.661	33.584	21.243	1'46.606	128,6	19:20'26.428
6	24.333	23.182	27.679	21.030	1'36.224	193,5	19:22'02.652
7	27.940	27.753	31.421	21.275	1'48.389	183,1	19:23'51.041
8	24.291	23.180	27.372	20.877	1'35.720	193,9	19:25'26.761

35 N. BAPTISTE (1'35.195)

Lap	Seg.1	Seg.2	Seg.3	Seg.4	Lap Time	km/h	Local Time
1							19:12'09.636
2	25.434	24.041	31.523	21.243	1'42.241	165,6	19:13'51.877
3	24.559	23.179	27.371	22.526	1'37.635	197,8	19:15'29.512

55 V. BERNIER (1'34.826)

Lap	Seg.1	Seg.2	Seg.3	Seg.4	Lap Time	km/h	Local Time
1							19:13'39.734
2	26.329	24.908	29.088	22.707	1'43.032	190,8	19:15'22.766
3	24.305	23.198	27.344	20.909	1'35.756	195,7	19:16'58.522
4	24.208	23.088	27.278	20.668	1'35.242	195,7	19:18'33.764
5	24.277	22.976	27.174	20.816	1'35.243	196,4	19:20'09.007

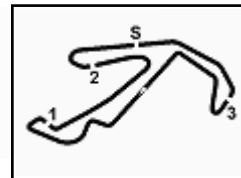
04/06/2021

P = Pits In/Out - C = Lap Time Cancelled



Powered by FICr PERUGIA TIMING





ACI Racing Weekend Misano, 5-6 Giugno 2021
Italian F4 Championship by Abarth - Chronological Analysis Qualifying 1

Misano Circuit Sic 58.4.226m

3 / 3

6	24.062	23.021	27.264	20.742	1'35.089	195,7	19:21'44.096
7	24.014	22.955	27.199	20.658	1'34.826	194,9	19:23'18.922
8	27.585	24.729	27.407	20.752	1'40.473	197,1	19:24'59.395

9	24.184	22.999	27.382	20.799	1'35.364	195,3	19:25'08.189
---	--------	---------------	---------------	---------------	-----------------	-------	--------------

56 S. MEGUETOUNIF (1'34.921)							
Lap	Seg.1	Seg.2	Seg.3	Seg.4	Lap Time	km/h	Local Time
1		27.691	31.625	23.266		180,0	19:13'42.745
2	25.879	24.256	28.913	22.245	1'41.293	191,8	19:15'24.038
3	24.534	23.193	27.355	20.791	1'35.873	196,4	19:16'59.911
4	24.157	22.987	27.209	20.798	1'35.151	196,0	19:18'35.062
5	24.144	22.982	27.441	20.987	1'35.554	195,7	19:20'10.616
6	24.153	23.025	27.229	21.153	1'35.560	195,7	19:21'46.176
7	24.307	25.331	28.487	21.261	1'39.386	194,9	19:23'25.562
8	24.082	22.948	27.271	20.620	1'34.921	195,7	19:25'00.483
9	24.102	22.938	27.304	20.638	1'34.982	194,9	19:26'35.465

86 B. VALINT (1'34.879)							
Lap	Seg.1	Seg.2	Seg.3	Seg.4	Lap Time	km/h	Local Time
1		29.819	34.335	24.411		139,2	19:12'31.290
2	33.562	26.259	28.272	21.733	1'49.826	190,1	19:14'21.116
3	24.517	23.377	27.465	21.227	1'36.586	195,7	19:15'57.702
4	24.349	23.146	27.295	21.064	1'35.854	196,7	19:17'33.556
5	24.206	23.055	27.365	20.892	1'35.518	195,3	19:19'09.074
6	24.081	23.041	27.356	20.866	1'35.344	195,3	19:20'44.418
7	24.139	23.095	27.170	20.799	1'35.203	196,0	19:22'19.621
8	24.103	22.962	27.068	20.746	1'34.879	196,4	19:23'54.500
9	25.767	23.579	28.256	39.322	1'56.924P	194,6	19:25'51.424

72 L. FORNAROLI (1'34.462)							
Lap	Seg.1	Seg.2	Seg.3	Seg.4	Lap Time	km/h	Local Time
1		24.723	31.139	26.782		186,2	19:12'23.745
2	24.880	23.271	27.698	20.947	1'36.796	195,7	19:14'00.541
3	25.381	23.145	28.684	20.862	1'38.072	180,6	19:15'38.613
4	24.190	22.988	27.337	20.677	1'35.192	196,4	19:17'13.805
5	24.118	22.878	27.017	20.638	1'34.651	198,2	19:18'48.456
6	26.440	28.063	29.820	21.534	1'45.857	186,5	19:20'34.313
7	24.101	22.859	27.071	21.982	1'36.013	197,1	19:22'10.326
8	27.118	25.646	28.770	21.442	1'42.976	194,2	19:23'53.302
9	24.075	22.785	27.051	20.551	1'34.462	196,7	19:25'27.764

87 O. BEARMAN (1'34.572)							
Lap	Seg.1	Seg.2	Seg.3	Seg.4	Lap Time	km/h	Local Time
1		27.360	30.795	22.113		172,5	19:13'29.532
2	25.465	24.274	28.086	21.028	1'38.853	191,8	19:15'08.385
3	24.327	22.990	27.299	20.864	1'35.480	196,4	19:16'43.865
4	24.196	22.922	27.186	20.738	1'35.042	196,0	19:18'18.907
5	24.379	23.024	27.114	20.687	1'35.204	196,4	19:19'54.111
6	24.209	22.862	27.059	20.622	1'34.752	196,4	19:21'28.863
7	24.094	22.894	27.113	20.634	1'34.735	196,7	19:23'03.598
8	24.070	22.853	27.101	20.566	1'34.590	196,0	19:24'38.188
9	24.111	22.795	27.074	20.592	1'34.572	196,4	19:26'12.760

73 P. ARMANNI (1'35.957)							
Lap	Seg.1	Seg.2	Seg.3	Seg.4	Lap Time	km/h	Local Time
1		25.764	29.200	24.739		188,5	19:12'19.083
2	25.158	23.562	28.271	22.746	1'39.737	194,6	19:13'58.820
3	24.679	23.246	27.441	21.335	1'36.701	196,4	19:15'35.521
4	24.345	23.347	27.358	21.115	1'36.165	197,1	19:17'11.686
5	24.637	23.163	27.148	21.058	1'36.006	198,2	19:18'47.692
6	24.300	23.175	27.469	21.386	1'36.330	197,1	19:20'24.022
7	27.394	23.907	28.578	21.457	1'41.336	193,5	19:22'05.358
8	24.437	23.186	27.439	20.975	1'36.037	194,6	19:23'41.395
9	24.444	23.130	27.461	20.922	1'35.957	193,9	19:25'17.352

88 H. AL QUBAISI (1'34.650)							
Lap	Seg.1	Seg.2	Seg.3	Seg.4	Lap Time	km/h	Local Time
1		24.882	28.803	21.566		186,2	19:12'08.697
2	25.247	23.844	30.162	22.573	1'41.826	174,2	19:13'50.523
3	24.878	23.254	27.433	21.222	1'36.787	196,7	19:15'27.310
4	25.535	24.654	29.471	20.906	1'40.566	185,6	19:17'07.876
5	24.683	23.049	27.420	20.861	1'36.013	195,3	19:18'43.889
6	24.280	22.911	27.157	21.041	1'35.389	196,0	19:20'19.278
7	25.384	27.384	33.632	24.129	1'50.529	151,7	19:22'09.807
8	24.443	22.993	27.063	20.657	1'35.156	197,4	19:23'44.963
9	24.187	22.837	27.034	20.592	1'34.650	197,4	19:25'19.613

77 P. PERINO (1'35.811)							
Lap	Seg.1	Seg.2	Seg.3	Seg.4	Lap Time	km/h	Local Time
1		25.854	29.376	22.533		184,9	19:12'16.286
2	25.755	24.031	28.897	22.071	1'40.754	189,5	19:13'57.040
3	24.831	23.258	27.624	21.268	1'36.981	197,1	19:15'34.021
4	24.675	23.165	27.426	21.084	1'36.350	197,4	19:17'10.371
5	24.611	23.343	27.399	21.133	1'36.486	197,1	19:18'46.857
6	24.597	23.323	27.535	21.217	1'36.672	195,7	19:20'23.529
7	24.539	23.221	27.659	21.216	1'36.635	194,2	19:22'00.164
8	24.493	23.178	27.294	21.017	1'35.982	195,7	19:23'36.146
9	24.382	23.108	27.385	20.936	1'35.811	195,3	19:25'11.957

83 M. WEUG (1'35.364)							
Lap	Seg.1	Seg.2	Seg.3	Seg.4	Lap Time	km/h	Local Time
1		25.621	29.901	22.327		182,4	19:12'15.723
2	25.841	24.071	28.814	21.910	1'40.636	193,2	19:13'56.359
3	24.925	23.401	27.809	21.075	1'37.210	195,7	19:15'33.569
4	24.461	23.197	27.505	20.932	1'36.095	196,7	19:17'09.664
5	24.822	23.138	27.461	20.946	1'36.367	197,8	19:18'46.031
6	24.353	23.071	27.400	20.822	1'35.646	196,7	19:20'21.677
7	24.317	23.054	27.456	20.841	1'35.668	195,3	19:21'57.345
8	24.177	23.021	27.427	20.855	1'35.480	194,9	19:23'32.825

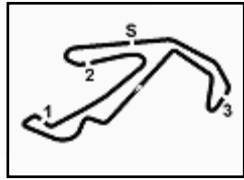
04/06/2021

P = Pits In/Out - C = Lap Time Cancelled



Powered by FICr PERUGIA TIMING

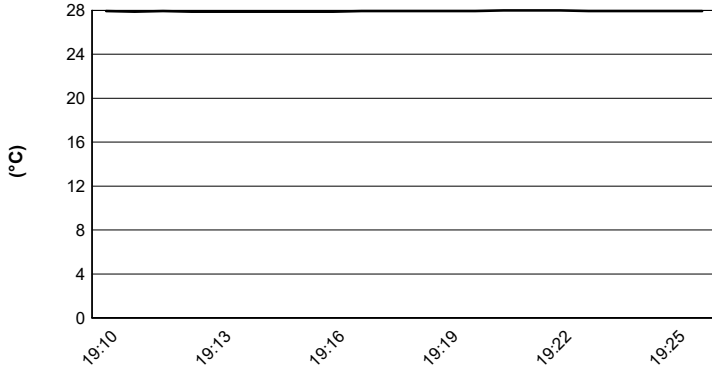




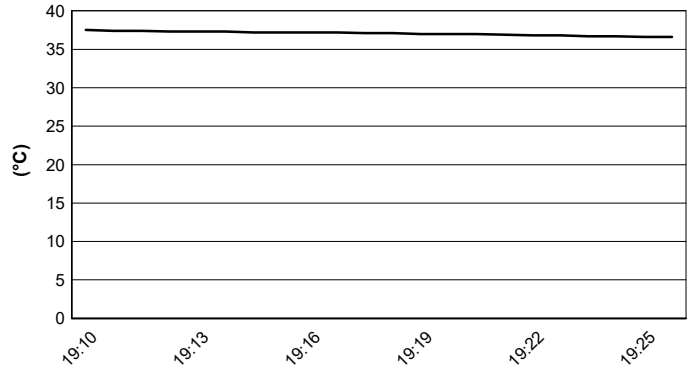
ACI Racing Weekend Misano, 5-6 Giugno 2021
Italian F4 Championship by Abarth - Weather Report Qualifying 1
Session started 19:10 - Session ended 19:26

Misano Circuit Sic 58 4.226 m

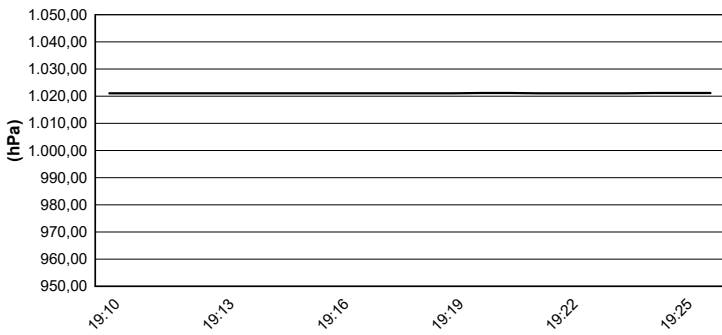
Air Temperature



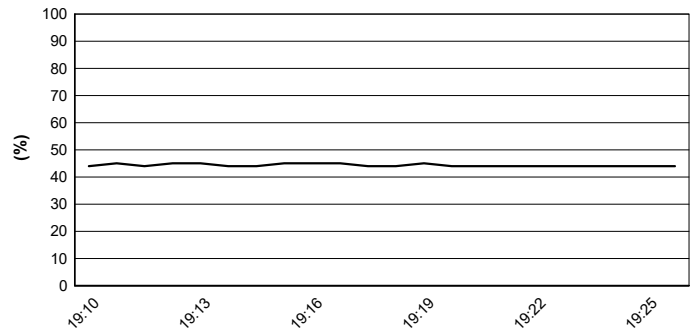
Track Temperature



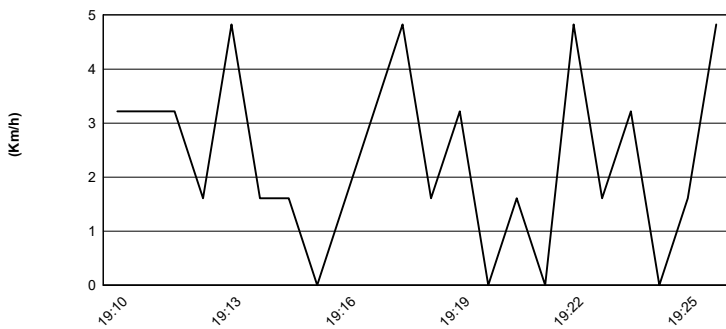
Air Pressure



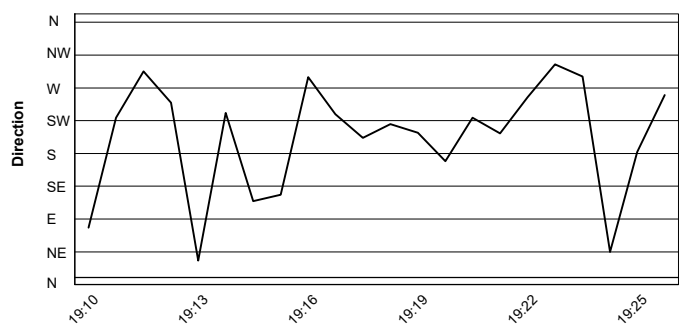
Humidity



Wind Speed

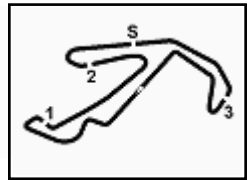


Wind Direction



04/06/2021





ACI Racing Weekend Misano, 5-6 Giugno 2021

Italian F4 Championship by Abarth - Result Second Time Qualifying 1

 Misano Circuit Sic 58 4.226 m
 1 / 2

No.	Driver	Nat	Entrant	Team	Car	Class	Time	Gap	Rel.	Laps
1	87 BEARMAN Oliver	GBR	Van Amersfoort Racing	Van Amersfoort Racing	Tatuus F4 T014 Abarth		1'34.590			8
2	72 FORNAROLI Leonardo	ITA	Iron Lynx	Iron Lynx	Tatuus F4 T014 Abarth		1'34.651	0.061	0.061	8
3	7 SMAL Kirill	RUS	Prema Powerteam	Prema Powerteam	Tatuus F4 T014 Abarth		1'34.674	0.084	0.023	8
4	6 MONTOYA Sebastian	COL	Prema Powerteam	Prema Powerteam	Tatuus F4 T014 Abarth		1'34.811	0.221	0.137	8
5	56 MEGUETOUNIF Sami	FRA	R-ACE GP	R-ACE GP	Tatuus F4 T014 Abarth		1'34.982	0.392	0.171	8
6	20 LAURSEN Conrad	DNK	Prema Powerteam	Prema Powerteam	Tatuus F4 T014 Abarth	R	1'34.996	0.406	0.014	9
7	55 BERNIER Victor	FRA	R-ACE GP	R-ACE GP	Tatuus F4 T014 Abarth		1'35.089	0.499	0.093	7
8	41 RIED Jonas	DEU	Muecke Motorsport	Muecke Motorsport	Tatuus F4 T014 Abarth	R	1'35.128	0.538	0.039	8
9	88 AL QUBAISI Hamda	UAE	Prema Powerteam	Prema Powerteam	Tatuus F4 T014 Abarth		1'35.156	0.566	0.028	8
10	15 BEDRIN Nikita	RUS	Van Amersfoort Racing	Van Amersfoort Racing	Tatuus F4 T014 Abarth	R	1'35.160	0.570	0.004	8
11	13 DUFEK Joshua	AUT	Van Amersfoort Racing	Van Amersfoort Racing	Tatuus F4 T014 Abarth		1'35.163	0.573	0.003	8
12	86 VALINT Bence	HUN	Van Amersfoort Racing	Van Amersfoort Racing	Tatuus F4 T014 Abarth		1'35.203	0.613	0.040	8
13	35 BAPTISTE Nicolas	COL	Cram Motorsport	Cram Motorsport	Tatuus F4 T014 Abarth	R	1'35.263	0.673	0.060	9
14	12 PATRESE Lorenzo	ITA	AKM Motorsport	AKM Motorsport	Tatuus F4 T014 Abarth	R	1'35.271	0.681	0.008	9
15	37 SZTUKA Kacper	POL	AS Motorsport	AS Motorsport	Tatuus F4 T014 Abarth	R	1'35.275	0.685	0.004	8
16	17 BIZZOTTO Leonardo	ITA	BVM Racing	BVM Racing	Tatuus F4 T014 Abarth	R	1'35.294	0.704	0.019	8
17	83 WEUG Maya	BEL	Iron Lynx	Iron Lynx	Tatuus F4 T014 Abarth	R	1'35.480	0.890	0.186	8
18	23 ZUNIGA Erick	MEX	Muecke Motorsport	Muecke Motorsport	Tatuus F4 T014 Abarth		1'35.575	0.985	0.095	8
19	28 BRASCHI Francesco	ITA	Jenzer Motorsport	Jenzer Motorsport	Tatuus F4 T014 Abarth	R	1'35.590	1.000	0.015	9
20	11 REVESZ Levente	HUN	AKM Motorsport	AKM Motorsport	Tatuus F4 T014 Abarth	R	1'35.662	1.072	0.072	9
21	25 BEN Samir	CHE	Jenzer Motorsport	Jenzer Motorsport	Tatuus F4 T014 Abarth	R	1'35.754	1.164	0.092	8
22	10 DÜRKSEN Joshua	PRY	Muecke Motorsport	Muecke Motorsport	Tatuus F4 T014 Abarth		1'35.761	1.171	0.007	8
23	52 REXHEPI Eron	CHE	BVM Racing	BVM Racing	Tatuus F4 T014 Abarth	R	1'35.873	1.283	0.112	8
24	24 WISNICKI Piotr	POL	Jenzer Motorsport	Jenzer Motorsport	Tatuus F4 T014 Abarth		1'35.937	1.347	0.064	8
25	77 PERINO Pedro	POR	DR Formula	DR Formula	Tatuus F4 T014 Abarth	R	1'35.982	1.392	0.045	8
26	73 ARMANNI Pietro	ITA	Iron Lynx	Iron Lynx	Tatuus F4 T014 Abarth	R	1'36.006	1.416	0.024	8
27	54 AMAND Marcus	FRA	R-ACE GP	R-ACE GP	Tatuus F4 T014 Abarth	R	1'36.224	1.634	0.218	7
28	27 GARCJARCE DAVILA Jorge	MEX	Jenzer Motorsport	Jenzer Motorsport	Tatuus F4 T014 Abarth		1'36.227	1.637	0.003	9
29	18 CENYU Han	CHN	Van Amersfoort Racing	Van Amersfoort Racing	Tatuus F4 T014 Abarth		1'38.193	3.603	1.966	4

Race Director : Fabrizio Fondacci

Clerck of the Course : Alessandro Ferrari

 Start 04/06/2021 19:09
 End 19:26


Powered by FICr PERUGIA TIMING

