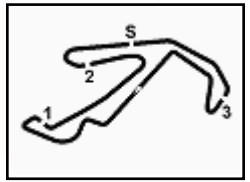


**2.1**

# ACI Racing Weekend Misano, 4-5 Giugno 2022

## Italian F4 Championship - Result Free Practice 2

Misano Circuit Sic 58 4.226 m

1 / 2

No.	Driver	Nat	Entrant	Team	Car	Class	Time	Gap	Rel.	Laps
1	<b>88 CAMARA</b> Rafael	BRA	Prema Racing	Prema Racing	Tatuus F.4 T421	R	<b>1'35.258</b>			16
2	<b>12 ANTONELLI</b> Kimi Andrea	ITA	Prema Racing	Prema Racing	Tatuus F.4 T421	R	<b>1'35.447</b>	0.189	0.189	17
3	<b>7 WURZ</b> Charlie	AUT	Prema Racing	Prema Racing	Tatuus F.4 T421	R	<b>1'35.659</b>	0.401	0.212	16
4	<b>13 WHARTON</b> James Anthony	AUS	Prema Racing	Prema Racing	Tatuus F.4 T421	R	<b>1'35.718</b>	0.460	0.059	17
5	<b>37 SZTUKA</b> Kacper	POL	US Racing	US Racing	Tatuus F.4 T421	R	<b>1'35.754</b>	0.496	0.036	17
6	<b>22 DUNNE</b> Alexander	IRL	US Racing	US Racing	Tatuus F.4 T421	R	<b>1'35.777</b>	0.519	0.023	20
7	<b>20 LAURSEN</b> Conrad	DEN	Prema Racing	Prema Racing	Tatuus F.4 T421	R	<b>1'35.792</b>	0.534	0.015	17
8	<b>15 BEDRIN</b> Nikita		PHM Racing	PHM Racing	Tatuus F.4 T421	R	<b>1'35.950</b>	0.692	0.158	20
9	<b>52 AMAND</b> Marcus	FRA	US Racing	US Racing	Tatuus F.4 T421	R	<b>1'36.060</b>	0.802	0.110	20
10	<b>17 FITTIPALDI</b> Emerson Jr.	BRA	Van Amersfoort Racing	Van Amersfoort Racing	Tatuus F.4 T421	R	<b>1'36.066</b>	0.808	0.006	20
11	<b>34 STENSHORNE</b> Martinus	NOR	Van Amersfoort Racing	Van Amersfoort Racing	Tatuus F.4 T421	R	<b>1'36.134</b>	0.876	0.068	19
12	<b>89 DOMINGUES</b> Ivan Franco	POR	Iron Lynx	Iron Lynx	Tatuus F.4 T421	R	<b>1'36.168</b>	0.910	0.034	15
13	<b>33 BADOER</b> Brando	ITA	Van Amersfoort Racing	Van Amersfoort Racing	Tatuus F.4 T421	R	<b>1'36.266</b>	1.008	0.098	20
14	<b>83 WEUG</b> Maya	NLD	Iron Dames	Iron Dames	Tatuus F.4 T421	R	<b>1'36.287</b>	1.029	0.021	20
15	<b>9 SPINA</b> Alfio Andrea	ITA	BWR Motorsport	BWR Motorsport	Tatuus F.4 T421	R	<b>1'36.386</b>	1.128	0.099	20
16	<b>44 BOHRA</b> Nikhil	USA	US Racing	US Racing	Tatuus F.4 T421	R	<b>1'36.389</b>	1.131	0.003	20
17	<b>71 FLACK</b> Marcos	AUS	R-ACE GP	R-ACE GP	Tatuus F.4 T421	R	<b>1'36.398</b>	1.140	0.009	19
18	<b>41 RIED</b> Jonas	DEU	PHM Racing	PHM Racing	Tatuus F.4 T421	R	<b>1'36.459</b>	1.201	0.061	18
19	<b>28 KLUSS</b> Valentin	DEU	Jenzer Motorsport	Jenzer Motorsport	Tatuus F.4 T421	R	<b>1'36.490</b>	1.232	0.031	13
20	<b>77 BARNARD</b> Taylor	GBR	PHM Racing	PHM Racing	Tatuus F.4 T421	R	<b>1'36.528</b>	1.270	0.038	18
21	<b>96 CASTRO</b> Jules	BEL	Van Amersfoort Racing	Van Amersfoort Racing	Tatuus F.4 T421	R	<b>1'36.568</b>	1.310	0.040	19
22	<b>2 DEUKMEDJAN</b> Arias	USA	Van Amersfoort Racing	Van Amersfoort Racing	Tatuus F.4 T421	R	<b>1'36.613</b>	1.355	0.045	21
23	<b>11 PERINO</b> Pedro	MOZ	US Racing	US Racing	Tatuus F.4 T421	R	<b>1'36.663</b>	1.405	0.050	20
24	<b>18 HWARANG</b> Kim	KOR	BVM Racing	BVM Racing	Tatuus F.4 T421	R	<b>1'36.759</b>	1.501	0.096	17
25	<b>35 CLEROT</b> Pedro	BRA	AKM Motorsport	AKM Motorsport	Tatuus F.4 T421	R	<b>1'36.807</b>	1.549	0.048	17
26	<b>27 ISCHER</b> Ethan	CHE	Jenzer Motorsport	Jenzer Motorsport	Tatuus F.4 T421	R	<b>1'36.935</b>	1.677	0.128	16
27	<b>78 BLOKINA</b> Viktoria		PHM Racing	PHM Racing	Tatuus F.4 T421	R	<b>1'36.978</b>	1.720	0.043	21
28	<b>23 PARTYSHEV</b> Oleksandr	UKR	Jenzer Motorsport	Jenzer Motorsport	Tatuus F.4 T421	R	<b>1'36.985</b>	1.727	0.007	17
29	<b>19 KARLSSON</b> William	SWE	BVM Racing	BVM Racing	Tatuus F.4 T421	R	<b>1'37.092</b>	1.834	0.107	19
30	<b>14 LUND</b> Frederik	DEN	R-ACE GP	R-ACE GP	Tatuus F.4 T421	R	<b>1'37.124</b>	1.866	0.032	19
31	<b>21 FRASSINETI</b> Andrea	ITA	Frassinetti Albano	Cars Racing	Tatuus F.4 T421	R	<b>1'37.241</b>	1.983	0.117	19
32	<b>48 SPERANDIO</b> Elia	CHE	Maffi Racing	Maffi Racing	Tatuus F.4 T421	R	<b>1'37.311</b>	2.053	0.070	19
33	<b>61 MASCHIO</b> Giovanni	ITA	AS Motorsport	AS Motorsport	Tatuus F.4 T421	R	<b>1'38.201</b>	2.943	0.890	18
34	<b>36 AKHMED</b> Ismail	UZB	AKM Motorsport	AKM Motorsport	Tatuus F.4 T421	R	<b>1'38.323</b>	3.065	0.122	20
35	<b>29 RISHAB</b> Anandraj Jain	SGP	BWR Motorsport	BWR Motorsport	Tatuus F.4 T421	R	<b>1'38.434</b>	3.176	0.111	18
36	<b>62 QUONDAMCARLO</b> Manuel	ITA	AS Motorsport	AS Motorsport	Tatuus F.4 T421	R				0

Humidity:	82%	Air	24°C
Condition:	DRY	Track	32°C

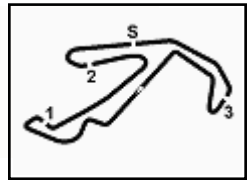
Clerk of the Course : Fabrizio Fondacci

Race Director : Alessandro Ferrari

Start	End
03/06/2022 17:09	17:51

Powered by FICr PERUGIA TIMING




**ACI Racing Weekend Misano, 4-5 Giugno 2022**
**Italian F4 Championship - Result Free Practice 2**

Misano Circuit Sic 58 4.226 m

2 / 2

**Penalty and Infringement**

17.16	27	E. ISCHER	Time Deleted (1'38.332) - Exceeded Track Limits - Turn 3
17.18	22	A. DUNNE	Time Deleted (1'36.860) - Exceeded Track Limits - Turn 13
17.20	78	V. BLOKINA	Time Deleted (1'41.235) - Exceeded Track Limits
17.22	71	M. FLACK	Time Deleted (1'36.941) - Exceeded Track Limits - Turn 8
17.23	37	K. SZTUKA	Time Deleted (1'36.969) - Exceeded Track Limits - Turn 8
17.23	11	P. PERINO	Time Deleted (1'37.437) - Exceeded Track Limits - Turn 8
17.23	37	K. SZTUKA	Time Deleted (1'36.780) - Exceeded Track Limits - Turn 8
17.24	48	E. SPERANDIO	Time Deleted (1'37.375) - Exceeded Track Limits - Turn 8
17.29	61	G. MASCHIO	Time Deleted (1'40.517) - Exceeded Track Limits - Turn 8
17.30	37	K. SZTUKA	Time Deleted (1'36.576) - Exceeded Track Limits - Turn 8
17.33	37	K. SZTUKA	Time Deleted (1'37.318) - Exceeded Track Limits - Turn 8
17.34	71	M. FLACK	Time Deleted (1'37.396) - Exceeded Track Limits - Turn 8
17.40	41	J. RIED	Time Deleted (1'37.000) - Exceeded Track Limits - Turn 8
17.40	13	J. WHARTON	Time Deleted (1'36.101) - Exceeded Track Limits - Turn 8
17.41	14	F. LUND	Time Deleted (1'37.128) - Exceeded Track Limits - Turn 8
17.45	22	A. DUNNE	Time Deleted (1'46.625) - Exceeded Track Limits - Turn 8
17.46	2	A. DEUKMEDJAN	Time Deleted (1'36.660) - Exceeded Track Limits - Turn 8
17.47	61	G. MASCHIO	Time Deleted (1'40.160) - Exceeded Track Limits - Turn 6
17.47	96	J. CASTRO	Time Deleted (1'38.935) - Exceeded Track Limits - Turn 8

**Fastest Laps Sequence**

No.	Entrant	Nat	Team	Car	Local Time	Time	Gap	Avg
71	M. FLACK	AUS	R-ACE GP	Tatuus F.4 T421	17:13'57.781	<b>1'41.441</b>		149,975
23	O. PARTYSHEV	UKR	Jenzer Motorsport	Tatuus F.4 T421	17:13'58.477	<b>1'41.367</b>	-0.074	150,084
48	E. SPERANDIO	CHE	Maffi Racing	Tatuus F.4 T421	17:14'35.557	<b>1'39.934</b>	-1.433	152,236
41	J. RIED	DEU	PHM Racing	Tatuus F.4 T421	17:14'52.070	<b>1'38.886</b>	-1.048	153,850
28	V. KLUSS	DEU	Jenzer Motorsport	Tatuus F.4 T421	17:15'50.851	<b>1'38.558</b>	-0.328	154,362
27	E. ISCHER	CHE	Jenzer Motorsport	Tatuus F.4 T421	17:15'52.933	<b>1'38.540</b>	-0.018	154,390
52	M. AMAND	FRA	US Racing	Tatuus F.4 T421	17:16'10.717	<b>1'38.487</b>	-0.053	154,473
41	J. RIED	DEU	PHM Racing	Tatuus F.4 T421	17:16'30.434	<b>1'38.364</b>	-0.123	154,666
83	M. WEUG	NLD	Iron Dames	Tatuus F.4 T421	17:16'38.414	<b>1'38.139</b>	-0.225	155,021
22	A. DUNNE	IRL	US Racing	Tatuus F.4 T421	17:16'41.476	<b>1'37.150</b>	-0.989	156,599
52	M. AMAND	FRA	US Racing	Tatuus F.4 T421	17:17'47.697	<b>1'36.980</b>	-0.170	156,874
88	R. CAMARA	BRA	Prema Racing	Tatuus F.4 T421	17:18'44.378	<b>1'36.431</b>	-0.549	157,767
12	K. ANTONELLI	ITA	Prema Racing	Tatuus F.4 T421	17:19'48.361	<b>1'35.946</b>	-0.485	158,564
12	K. ANTONELLI	ITA	Prema Racing	Tatuus F.4 T421	17:23'17.788	<b>1'35.873</b>	-0.073	158,685
12	K. ANTONELLI	ITA	Prema Racing	Tatuus F.4 T421	17:24'53.445	<b>1'35.657</b>	-0.216	159,043
88	R. CAMARA	BRA	Prema Racing	Tatuus F.4 T421	17:41'32.732	<b>1'35.527</b>	-0.130	159,260
12	K. ANTONELLI	ITA	Prema Racing	Tatuus F.4 T421	17:42'00.391	<b>1'35.480</b>	-0.047	159,338
88	R. CAMARA	BRA	Prema Racing	Tatuus F.4 T421	17:46'43.323	<b>1'35.298</b>	-0.182	159,642
88	R. CAMARA	BRA	Prema Racing	Tatuus F.4 T421	17:48'18.581	<b>1'35.258</b>	-0.040	159,709

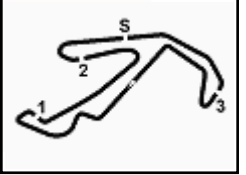
Clerk of the Course : Fabrizio Fondacci

Race Director : Alessandro Ferrari

Start	End
03/06/2022 17:09	17:51

Powered by FICr PERUGIA TIMING





# ACI Racing Weekend Misano, 4-5 Giugno 2022

## Italian F4 Championship - Combined FP Result

Misano Circuit Sic 58 4.226 m

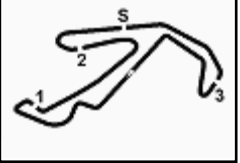
No.	Driver	Nat	Team	Car	Class	FP1	FP2	Time	Gap	Rel.	Laps
1	<b>88 CAMARA</b> Rafael	BRA	Prema Racing	Tatuus F.4 T421	R	1'36.048	<b>1'35.258</b>	1'36.415	<b>1'35.258</b>		86
2	<b>12 ANTONELLI</b> Kimi Andrea	ITA	Prema Racing	Tatuus F.4 T421	R	1'35.758	<b>1'35.447</b>	1'35.682	<b>1'35.447</b>	0.189	0.189 87
3	<b>7 WURZ</b> Charlie	AUT	Prema Racing	Tatuus F.4 T421	R	1'36.117	<b>1'35.659</b>	1'36.462	<b>1'35.659</b>	0.401	0.212 85
4	<b>13 WHARTON</b> James Anthon	AUS	Prema Racing	Tatuus F.4 T421	R	1'36.288	<b>1'35.718</b>	1'36.476	<b>1'35.718</b>	0.460	0.059 88
5	<b>37 SZTUKA</b> Kacper	POL	US Racing	Tatuus F.4 T421		1'36.084	<b>1'35.754</b>	1'36.435	<b>1'35.754</b>	0.496	0.036 88
6	<b>22 DUNNE</b> Alexander	IRL	US Racing	Tatuus F.4 T421		1'35.971	<b>1'35.777</b>	1'36.218	<b>1'35.777</b>	0.519	0.023 87
7	<b>20 LAURSEN</b> Conrad	DEN	Prema Racing	Tatuus F.4 T421		1'36.154	<b>1'35.792</b>	1'36.965	<b>1'35.792</b>	0.534	0.015 83
8	<b>15 BEDRIN</b> Nikita		PHM Racing	Tatuus F.4 T421		1'36.305	<b>1'35.950</b>	1'36.631	<b>1'35.950</b>	0.692	0.158 106
9	<b>52 AMAND</b> Marcus	FRA	US Racing	Tatuus F.4 T421		<b>1'35.960</b>	1'36.060	1'36.249	<b>1'35.960</b>	0.702	0.010 94
10	<b>17 FITTIPALDI</b> Emerson Jr.	BRA	Van Amersfoort Racing	Tatuus F.4 T421	R	1'36.742	<b>1'36.066</b>	1'36.636	<b>1'36.066</b>	0.808	0.106 93
11	<b>34 STENSHORNE</b> Martinus	NOR	Van Amersfoort Racing	Tatuus F.4 T421	R	1'36.284	<b>1'36.134</b>	1'36.642	<b>1'36.134</b>	0.876	0.068 91
12	<b>89 DOMINGUES</b> Ivan Franco	POR	Iron Lynx	Tatuus F.4 T421	R	1'36.490	<b>1'36.168</b>	1'36.846	<b>1'36.168</b>	0.910	0.034 93
13	<b>33 BADOER</b> Brando	ITA	Van Amersfoort Racing	Tatuus F.4 T421	R	1'36.461	<b>1'36.266</b>	1'36.984	<b>1'36.266</b>	1.008	0.098 97
14	<b>83 WEUG</b> Maya	NLD	Iron Dames	Tatuus F.4 T421		1'37.065	<b>1'36.287</b>	1'36.916	<b>1'36.287</b>	1.029	0.021 93
15	<b>9 SPINA</b> Alfio Andrea	ITA	BWR Motorsport	Tatuus F.4 T421	R	1'37.373	<b>1'36.386</b>	1'36.999	<b>1'36.386</b>	1.128	0.099 105
16	<b>44 BOHRA</b> Nikhil	USA	US Racing	Tatuus F.4 T421	R	1'36.472	<b>1'36.389</b>	1'36.537	<b>1'36.389</b>	1.131	0.003 79
17	<b>71 FLACK</b> Marcos	AUS	R-ACE GP	Tatuus F.4 T421		1'36.808	<b>1'36.398</b>	1'37.025	<b>1'36.398</b>	1.140	0.009 92
18	<b>41 RIED</b> Jonas	DEU	PHM Racing	Tatuus F.4 T421		1'36.994	<b>1'36.459</b>	1'38.014	<b>1'36.459</b>	1.201	0.061 44
19	<b>28 KLUSS</b> Valentin	DEU	Jenzer Motorsport	Tatuus F.4 T421	R	<b>1'36.467</b>	1'36.490	1'37.139	<b>1'36.467</b>	1.209	0.008 81
20	<b>77 BARNARD</b> Taylor	GBR	PHM Racing	Tatuus F.4 T421		1'36.678	<b>1'36.528</b>	1'36.890	<b>1'36.528</b>	1.270	0.061 91
21	<b>96 CASTRO</b> Jules	BEL	Van Amersfoort Racing	Tatuus F.4 T421	R	1'36.935	<b>1'36.568</b>	1'37.559	<b>1'36.568</b>	1.310	0.040 84
22	<b>2 DEUKMEDJAN</b> Arias	USA	Van Amersfoort Racing	Tatuus F.4 T421	R	1'37.150	<b>1'36.613</b>	1'37.385	<b>1'36.613</b>	1.355	0.045 92
23	<b>11 PERINO</b> Pedro	MOZ	US Racing	Tatuus F.4 T421		1'37.272	<b>1'36.663</b>	1'37.480	<b>1'36.663</b>	1.405	0.050 92
24	<b>18 HWARANG</b> Kim	KOR	BVM Racing	Tatuus F.4 T421	R	1'37.176	<b>1'36.759</b>	1'37.536	<b>1'36.759</b>	1.501	0.096 91
25	<b>35 CLEROT</b> Pedro	BRA	AKM Motorsport	Tatuus F.4 T421	R	1'36.918	<b>1'36.807</b>	1'37.475	<b>1'36.807</b>	1.549	0.048 103
26	<b>78 BLOKINA</b> Viktoria		PHM Racing	Tatuus F.4 T421	R	<b>1'36.917</b>	1'36.978	1'37.537	<b>1'36.917</b>	1.659	0.110 86
27	<b>27 ISCHER</b> Ethan	CHE	Jenzer Motorsport	Tatuus F.4 T421	R	1'37.151	<b>1'36.935</b>	1'37.561	<b>1'36.935</b>	1.677	0.018 79
28	<b>23 PARTYSHEV</b> Oleksandr	UKR	Jenzer Motorsport	Tatuus F.4 T421		1'37.805	<b>1'36.985</b>	1'37.604	<b>1'36.985</b>	1.727	0.050 85
29	<b>47 LACORTE</b> Nicola	ITA	Iron Lynx	Tatuus F.4 T421			<b>1'37.065</b>	<b>1'37.065</b>	<b>1'37.065</b>	1.807	0.080 62
30	<b>19 KARLSSON</b> William	SWE	BVM Racing	Tatuus F.4 T421	R	1'37.429	<b>1'37.092</b>	1'37.693	<b>1'37.092</b>	1.834	0.027 81
31	<b>14 LUND</b> Frederik	DEN	R-ACE GP	Tatuus F.4 T421	R	1'37.223	<b>1'37.124</b>	1'37.356	<b>1'37.124</b>	1.866	0.032 87
32	<b>21 FRASSINETI</b> Andrea	ITA	Cars Racing	Tatuus F.4 T421	R	1'37.410	<b>1'37.241</b>	1'37.342	<b>1'37.241</b>	1.983	0.117 98
33	<b>48 SPERANDIO</b> Elia	CHE	Maffi Racing	Tatuus F.4 T421	R	1'37.345	<b>1'37.311</b>	1'38.213	<b>1'37.311</b>	2.053	0.070 83
34	<b>61 MASCHIO</b> Giovanni	ITA	AS Motorsport	Tatuus F.4 T421	R	1'38.512	<b>1'38.201</b>	1'39.128	<b>1'38.201</b>	2.943	0.890 88
35	<b>36 AKHMED</b> Ismail	UZB	AKM Motorsport	Tatuus F.4 T421	R	1'38.749	<b>1'38.323</b>	1'38.936	<b>1'38.323</b>	3.065	0.122 104
36	<b>29 RISHAB</b> Anandraj Jain	SGP	BWR Motorsport	Tatuus F.4 T421	R	1'38.550	<b>1'38.434</b>	1'40.319	<b>1'38.434</b>	3.176	0.111 68
37	<b>62 QUONDAMCARLO</b> Manu	ITA	AS Motorsport	Tatuus F.4 T421			<b>1'39.375</b>	<b>1'39.375</b>	<b>1'39.375</b>	4.117	0.941 47

Clerk of the Course : Fabrizio Fondacci

Race Director : Alessandro Ferrari

03/06/2022





## ACI Racing Weekend Misano, 4-5 Giugno 2022 Italian F4 Championship - Best Sectors & Speed Free Practice 2

Misano Circuit Sic 58 4.226 m

**BEST LAP**

1	<b>88 CAMARA</b> Rafael	Tatuus F.4 T421	1'35.258
2	<b>12 ANTONELLI</b> Kimi Andrea	Tatuus F.4 T421	1'35.447
3	<b>7 WURZ</b> Charlie	Tatuus F.4 T421	1'35.659
4	<b>13 WHARTON</b> James Anthony	Tatuus F.4 T421	1'35.718
5	<b>37 SZTUKA</b> Kacper	Tatuus F.4 T421	1'35.754
6	<b>22 DUNNE</b> Alexander	Tatuus F.4 T421	1'35.777
7	<b>20 LAURSEN</b> Conrad	Tatuus F.4 T421	1'35.792
8	<b>15 BEDRIN</b> Nikita	Tatuus F.4 T421	1'35.950
9	<b>52 AMAND</b> Marcus	Tatuus F.4 T421	1'36.060
10	<b>17 FITTIPALDI</b> Emerson Jr.	Tatuus F.4 T421	1'36.066
11	<b>34 STENSHORNE</b> Martinius	Tatuus F.4 T421	1'36.134
12	<b>89 DOMINGUES</b> Ivan Franco	Tatuus F.4 T421	1'36.168
13	<b>33 BADOER</b> Brando	Tatuus F.4 T421	1'36.266
14	<b>83 WEUG</b> Maya	Tatuus F.4 T421	1'36.287
15	<b>9 SPINA</b> Alfio Andrea	Tatuus F.4 T421	1'36.386
16	<b>44 BOHRA</b> Nikhil	Tatuus F.4 T421	1'36.389
17	<b>71 FLACK</b> Marcos	Tatuus F.4 T421	1'36.398
18	<b>41 RIED</b> Jonas	Tatuus F.4 T421	1'36.459
19	<b>28 KLUSS</b> Valentin	Tatuus F.4 T421	1'36.490
20	<b>77 BARNARD</b> Taylor	Tatuus F.4 T421	1'36.528
21	<b>96 CASTRO</b> Jules	Tatuus F.4 T421	1'36.568
22	<b>2 DEUKMEDJAN</b> Arias	Tatuus F.4 T421	1'36.613
23	<b>11 PERINO</b> Pedro	Tatuus F.4 T421	1'36.663
24	<b>18 HWARANG</b> Kim	Tatuus F.4 T421	1'36.759
25	<b>35 CLEROT</b> Pedro	Tatuus F.4 T421	1'36.807
26	<b>27 ISCHER</b> Ethan	Tatuus F.4 T421	1'36.935
27	<b>78 BLOKINA</b> Viktoria	Tatuus F.4 T421	1'36.978
28	<b>23 PARTYSHEV</b> Olegsandr	Tatuus F.4 T421	1'36.985
29	<b>19 KARLSSON</b> William	Tatuus F.4 T421	1'37.092
30	<b>14 LUND</b> Frederik	Tatuus F.4 T421	1'37.124
31	<b>21 FRASSINETI</b> Andrea	Tatuus F.4 T421	1'37.241
32	<b>48 SPERANDIO</b> Elia	Tatuus F.4 T421	1'37.311
33	<b>61 MASCHIO</b> Giovanni	Tatuus F.4 T421	1'38.201
34	<b>36 AKHMED</b> Ismail	Tatuus F.4 T421	1'38.323
35	<b>29 RISHAB</b> Anandraj Jain	Tatuus F.4 T421	1'38.434
36	<b>62 QUONDAMCARLO</b> Manuel	Tatuus F.4 T421	

**SPEED**

1	<b>52 AMAND</b> Marcus	Tatuus F.4 T421	200,7
2	<b>88 CAMARA</b> Rafael	Tatuus F.4 T421	199,6
3	<b>22 DUNNE</b> Alexander	Tatuus F.4 T421	198,9
4	<b>37 SZTUKA</b> Kacper	Tatuus F.4 T421	198,9
5	<b>13 WHARTON</b> James Anthony	Tatuus F.4 T421	198,9
6	<b>15 BEDRIN</b> Nikita	Tatuus F.4 T421	198,9
7	<b>18 HWARANG</b> Kim	Tatuus F.4 T421	198,2
8	<b>14 LUND</b> Frederik	Tatuus F.4 T421	198,2
9	<b>33 BADOER</b> Brando	Tatuus F.4 T421	197,8
10	<b>12 ANTONELLI</b> Kimi Andrea	Tatuus F.4 T421	197,8
11	<b>20 LAURSEN</b> Conrad	Tatuus F.4 T421	197,8
12	<b>21 FRASSINETI</b> Andrea	Tatuus F.4 T421	197,4
13	<b>89 DOMINGUES</b> Ivan Franco	Tatuus F.4 T421	197,4
14	<b>7 WURZ</b> Charlie	Tatuus F.4 T421	197,1
15	<b>71 FLACK</b> Marcos	Tatuus F.4 T421	197,1
16	<b>17 FITTIPALDI</b> Emerson Jr.	Tatuus F.4 T421	197,1
17	<b>9 SPINA</b> Alfio Andrea	Tatuus F.4 T421	197,1
18	<b>35 CLEROT</b> Pedro	Tatuus F.4 T421	196,7
19	<b>27 ISCHER</b> Ethan	Tatuus F.4 T421	196,7
20	<b>34 STENSHORNE</b> Martinius	Tatuus F.4 T421	196,7
21	<b>44 BOHRA</b> Nikhil	Tatuus F.4 T421	196,7
22	<b>48 SPERANDIO</b> Elia	Tatuus F.4 T421	196,7
23	<b>78 BLOKINA</b> Viktoria	Tatuus F.4 T421	196,7
24	<b>96 CASTRO</b> Jules	Tatuus F.4 T421	196,4
25	<b>41 RIED</b> Jonas	Tatuus F.4 T421	196,4
26	<b>83 WEUG</b> Maya	Tatuus F.4 T421	196,4
27	<b>36 AKHMED</b> Ismail	Tatuus F.4 T421	196,4
28	<b>61 MASCHIO</b> Giovanni	Tatuus F.4 T421	196,0
29	<b>11 PERINO</b> Pedro	Tatuus F.4 T421	195,7
30	<b>2 DEUKMEDJAN</b> Arias	Tatuus F.4 T421	195,7
31	<b>28 KLUSS</b> Valentin	Tatuus F.4 T421	195,7
32	<b>77 BARNARD</b> Taylor	Tatuus F.4 T421	195,7
33	<b>19 KARLSSON</b> William	Tatuus F.4 T421	194,9
34	<b>23 PARTYSHEV</b> Olegsandr	Tatuus F.4 T421	194,9
35	<b>29 RISHAB</b> Anandraj Jain	Tatuus F.4 T421	194,6

**SEG. 1**

1	<b>12 ANTONELLI</b> Kimi Andrea	23.524
2	<b>37 SZTUKA</b> Kacper	23.581
3	<b>88 CAMARA</b> Rafael	23.623
4	<b>22 DUNNE</b> Alexander	23.659
5	<b>52 AMAND</b> Marcus	23.664
6	<b>20 LAURSEN</b> Conrad	23.667
7	<b>7 WURZ</b> Charlie	23.687
8	<b>13 WHARTON</b> James Anthon	23.711
9	<b>17 FITTIPALDI</b> Emerson Jr.	23.714
10	<b>34 STENSHORNE</b> Martinius	23.774
11	<b>33 BADOER</b> Brando	23.776
12	<b>44 BOHRA</b> Nikhil	23.781
13	<b>15 BEDRIN</b> Nikita	23.797
14	<b>83 WEUG</b> Maya	23.809
15	<b>89 DOMINGUES</b> Ivan Franco	23.811
16	<b>2 DEUKMEDJAN</b> Arias	23.841
17	<b>28 KLUSS</b> Valentin	23.851
18	<b>9 SPINA</b> Alfio Andrea	23.862
19	<b>11 PERINO</b> Pedro	23.867
20	<b>41 RIED</b> Jonas	23.880
21	<b>77 BARNARD</b> Taylor	23.884
22	<b>71 FLACK</b> Marcos	23.909
23	<b>96 CASTRO</b> Jules	23.916
24	<b>19 KARLSSON</b> William	23.923
25	<b>35 CLEROT</b> Pedro	23.953
26	<b>27 ISCHER</b> Ethan	23.956
27	<b>18 HWARANG</b> Kim	24.021
28	<b>48 SPERANDIO</b> Elia	24.048
29	<b>14 LUND</b> Frederik	24.071
30	<b>23 PARTYSHEV</b> Olegsandr	24.080
31	<b>78 BLOKINA</b> Viktoria	24.088
32	<b>21 FRASSINETI</b> Andrea	24.129
33	<b>36 AKHMED</b> Ismail	24.307
34	<b>61 MASCHIO</b> Giovanni	24.340
35	<b>29 RISHAB</b> Anandraj Jain	24.475

**SEG. 2**

1	<b>12 ANTONELLI</b> Kimi Andrea	23.698
2	<b>7 WURZ</b> Charlie	23.804
3	<b>13 WHARTON</b> James Anthon	23.828
4	<b>88 CAMARA</b> Rafael	23.829
5	<b>17 FITTIPALDI</b> Emerson Jr.	23.888
6	<b>34 STENSHORNE</b> Martinius	23.890
7	<b>20 LAURSEN</b> Conrad	23.910
8	<b>15 BEDRIN</b> Nikita	23.937
9	<b>37 SZTUKA</b> Kacper	23.941
10	<b>22 DUNNE</b> Alexander	23.947
11	<b>27 ISCHER</b> Ethan	23.961
12	<b>89 DOMINGUES</b> Ivan Franco	23.971
13	<b>52 AMAND</b> Marcus	23.981
14	<b>9 SPINA</b> Alfio Andrea	23.988
15	<b>83 WEUG</b> Maya	24.001
16	<b>18 HWARANG</b> Kim	24.003
17	<b>33 BADOER</b> Brando	24.025
18	<b>71 FLACK</b> Marcos	24.038
19	<b>19 KARLSSON</b> William	24.044
20	<b>35 CLEROT</b> Pedro	24.044
21	<b>28 KLUSS</b> Valentin	24.058
22	<b>96 CASTRO</b> Jules	24.063
23	<b>77 BARNARD</b> Taylor	24.070
24	<b>41 RIED</b> Jonas	24.085
25	<b>44 BOHRA</b> Nikhil	24.089
26	<b>2 DEUKMEDJAN</b> Arias	24.099
27	<b>14 LUND</b> Frederik	24.101
28	<b>11 PERINO</b> Pedro	24.115
29	<b>48 SPERANDIO</b> Elia	24.130
30	<b>78 BLOKINA</b> Viktoria	24.137
31	<b>21 FRASSINETI</b> Andrea	24.161
32	<b>23 PARTYSHEV</b> Olegsandr	24.171
33	<b>29 RISHAB</b> Anandraj Jain	24.269
34	<b>61 MASCHIO</b> Giovanni	24.353
35	<b>36 AKHMED</b> Ismail	24.415

**SEG. 3**

1	<b>88 CAMARA</b> Rafael	26.988
2	<b>12 ANTONELLI</b> Kimi Andrea	27.076
3	<b>7 WURZ</b> Charlie	27.108
4	<b>15 BEDRIN</b> Nikita	27.126
5	<b>13 WHARTON</b> James Anthon	27.171
6	<b>34 STENSHORNE</b> Martinius	27.222
7	<b>22 DUNNE</b> Alexander	27.250
8	<b>20 LAURSEN</b> Conrad	27.260
9	<b>37 SZTUKA</b> Kacper	27.300
10	<b>52 AMAND</b> Marcus	27.322
11	<b>33 BADOER</b> Brando	27.329
12	<b>77 BARNARD</b> Taylor	27.331
13	<b>41 RIED</b> Jonas	27.342
14	<b>83 WEUG</b> Maya	27.344
15	<b>28 KLUSS</b> Valentin	27.352
16	<b>71 FLACK</b> Marcos	27.370
17	<b>17 FITTIPALDI</b> Emerson Jr.	27.417
18	<b>78 BLOKINA</b> Viktoria	27.418
19	<b>44 BOHRA</b> Nikhil	27.429
20	<b>14 LUND</b> Frederik	27.433
21	<b>89 DOMINGUES</b> Ivan Franco	27.440
22	<b>2 DEUKMEDJAN</b> Arias	27.442
23	<b>11 PERINO</b> Pedro	27.460
24	<b>27 ISCHER</b> Ethan	27.465
25	<b>9 SPINA</b> Alfio Andrea	27.481
26	<b>35 CLEROT</b> Pedro	27.496
27	<b>96 CASTRO</b> Jules	27.512
28	<b>18 HWARANG</b> Kim	27.519
29	<b>23 PARTYSHEV</b> Olegsandr	27.548
30	<b>19 KARLSSON</b> William	27.625
31	<b>21 FRASSINETI</b> Andrea	27.645
32	<b>61 MASCHIO</b> Giovanni	27.655
33	<b>48 SPERANDIO</b> Elia	27.664
34	<b>36 AKHMED</b> Ismail	27.908
35	<b>29 RISHAB</b> Anandraj Jain	27.982

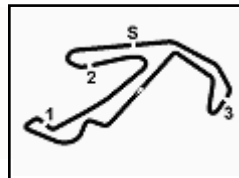
**SEG. 4**

1	<b>88 CAMARA</b> Rafael	20.699
2	<b>12 ANTONELLI</b> Kimi Andrea	20.782
3	<b>20 LAURSEN</b> Conrad	20.799
4	<b>17 FITTIPALDI</b> Emerson Jr.	20.868
5	<b>7 WURZ</b> Charlie	20.881
6	<b>37 SZTUKA</b> Kacper	20.884
7	<b>13 WHARTON</b> James Anthon	20.902
8	<b>22 DUNNE</b> Alexander	20.905
9	<b>89 DOMINGUES</b> Ivan Franco	20.946
10	<b>52 AMAND</b> Marcus	20.947
11	<b>15 BEDRIN</b> Nikita	20.959
12	<b>83 WEUG</b> Maya	20.963
13	<b>41 RIED</b> Jonas	20.977
14	<b>44 BOHRA</b> Nikhil	20.988
15	<b>2 DEUKMEDJAN</b> Arias	21.005
16	<b>34 STENSHORNE</b> Martinius	21.011
17	<b>96 CASTRO</b> Jules	21.012
18	<b>77 BARNARD</b> Taylor	21.019
19	<b>71 FLACK</b> Marcos	21.021
20	<b>11 PERINO</b> Pedro	21.028
21	<b>9 SPINA</b> Alfio Andrea	21.040
22	<b>28 KLUSS</b> Valentin	21.052
23	<b>33 BADOER</b> Brando	21.068
24	<b>18 HWARANG</b> Kim	21.127
25	<b>35 CLEROT</b> Pedro	21.129
26	<b>23 PARTYSHEV</b> Olegsandr	21.144
27	<b>78 BLOKINA</b> Viktoria	21.144
28	<b>19 KARLSSON</b> William	21.183
29	<b>21 FRASSINETI</b> Andrea	21.234
30	<b>27 ISCHER</b> Ethan	21.258
31	<b>14 LUND</b> Frederik	21.261
32	<b>48 SPERANDIO</b> Elia	21.276
33	<b>36 AKHMED</b> Ismail	21.412
34	<b>61 MASCHIO</b> Giovanni	21.413
35	<b>29 RISHAB</b> Anandraj Jain	21.491

03/06/2022

Powered by FICr PERUGIA TIMING





# ACI Racing Weekend Misano, 4-5 Giugno 2022

## Italian F4 Championship - Ideal Time Free Practice 2

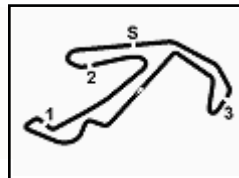
 Misano Circuit Sic 58.4.226 m  
**1 / 2**

No. Driver	Car	Seg. 1 Diff. 1	Seg. 2 Diff. 2	Seg. 3 Diff. 3	Seg. 4 Diff. 4	Ideal Time		
						Best Lap	Pos.	Diff.
1 <b>12 ANTONELLI K.</b> (ITA)	Tatuus F.4 T421	23.524 +0.031	23.698	27.076 +0.235	20.782 +0.101	<b>1'35.080</b> 1'35.447	2	0.367
2 <b>88 CAMARA R.</b> (BRA)	Tatuus F.4 T421	23.623 +0.056	23.829	26.988	20.699 +0.063	<b>1'35.139</b> 1'35.258	1	0.119
3 <b>7 WURZ C.</b> (AUT)	Tatuus F.4 T421	23.687 +0.133	23.804 +0.019	27.108 +0.027	20.881	<b>1'35.480</b> 1'35.659	3	0.179
4 <b>13 WHARTON J.</b> (AUS)	Tatuus F.4 T421	23.711	23.828	27.171 +0.091	20.902 +0.015	<b>1'35.612</b> 1'35.718	4	0.106
5 <b>20 LAURSEN C.</b> (DEN)	Tatuus F.4 T421	23.667 +0.060	23.910 +0.038	27.260 +0.058	20.799	<b>1'35.636</b> 1'35.792	7	0.156
6 <b>37 SZTUKA K.</b> (POL)	Tatuus F.4 T421	23.581	23.941 +0.026	27.300 +0.013	20.884 +0.009	<b>1'35.706</b> 1'35.754	5	0.048
7 <b>22 DUNNE A.</b> (IRL)	Tatuus F.4 T421	23.659 +0.016	23.947	27.250	20.905	<b>1'35.761</b> 1'35.777	6	0.016
8 <b>15 BEDRIN N.</b>	Tatuus F.4 T421	23.797	23.937	27.126	20.959 +0.131	<b>1'35.819</b> 1'35.950	8	0.131
9 <b>17 FITTIPALDI E.</b> (BRA)	Tatuus F.4 T421	23.714 +0.031	23.888 +0.006	27.417 +0.052	20.868 +0.090	<b>1'35.887</b> 1'36.066	10	0.179
10 <b>34 STENSHORNE M.</b> (NOR)	Tatuus F.4 T421	23.774 +0.037	23.890	27.222 +0.106	21.011 +0.094	<b>1'35.897</b> 1'36.134	11	0.237
11 <b>52 AMAND M.</b> (FRA)	Tatuus F.4 T421	23.664 +0.115	23.981	27.322 +0.005	20.947 +0.026	<b>1'35.914</b> 1'36.060	9	0.146
12 <b>83 WEUG M.</b> (NLD)	Tatuus F.4 T421	23.809 +0.033	24.001 +0.012	27.344 +0.054	20.963 +0.071	<b>1'36.117</b> 1'36.287	14	0.170
13 <b>89 DOMINGUES I.</b> (POR)	Tatuus F.4 T421	23.811	23.971	27.440	20.946	<b>1'36.168</b> 1'36.168	12	
14 <b>33 BADOER B.</b> (ITA)	Tatuus F.4 T421	23.776	24.025	27.329 +0.068	21.068	<b>1'36.198</b> 1'36.266	13	0.068
15 <b>41 RIED J.</b> (DEU)	Tatuus F.4 T421	23.880 +0.154	24.085 +0.021	27.342	20.977	<b>1'36.284</b> 1'36.459	18	0.175
16 <b>44 BOHRA N.</b> (USA)	Tatuus F.4 T421	23.781 +0.023	24.089 +0.057	27.429 +0.022	20.988	<b>1'36.287</b> 1'36.389	16	0.102
17 <b>77 BARNARD T.</b> (GBR)	Tatuus F.4 T421	23.884 +0.047	24.070 +0.022	27.331 +0.093	21.019 +0.062	<b>1'36.304</b> 1'36.528	20	0.224
18 <b>28 KLUSS V.</b> (DEU)	Tatuus F.4 T421	23.851 +0.034	24.058	27.352 +0.082	21.052 +0.061	<b>1'36.313</b> 1'36.490	19	0.177
19 <b>71 FLACK M.</b> (AUS)	Tatuus F.4 T421	23.909	24.038 +0.049	27.370 +0.011	21.021	<b>1'36.338</b> 1'36.398	17	0.060
20 <b>9 SPINA A.</b> (ITA)	Tatuus F.4 T421	23.862	23.988 +0.015	27.481	21.040	<b>1'36.371</b> 1'36.386	15	0.015
21 <b>2 DEUKMEDJAN A.</b> (USA)	Tatuus F.4 T421	23.841 +0.013	24.099 +0.087	27.442 +0.091	21.005 +0.035	<b>1'36.387</b> 1'36.613	22	0.226
22 <b>11 PERINO P.</b> (MOZ)	Tatuus F.4 T421	23.867	24.115	27.460 +0.070	21.028 +0.123	<b>1'36.470</b> 1'36.663	23	0.193
23 <b>96 CASTRO J.</b> (BEL)	Tatuus F.4 T421	23.916	24.063	27.512 +0.016	21.012 +0.049	<b>1'36.503</b> 1'36.568	21	0.065
24 <b>35 CLEROT P.</b> (BRA)	Tatuus F.4 T421	23.953	24.044 +0.073	27.496 +0.112	21.129	<b>1'36.622</b> 1'36.807	25	0.185
25 <b>27 ISCHER E.</b> (CHE)	Tatuus F.4 T421	23.956 +0.037	23.961 +0.127	27.465 +0.131	21.258	<b>1'36.640</b> 1'36.935	26	0.295
26 <b>18 HWARANG K.</b> (KOR)	Tatuus F.4 T421	24.021 +0.045	24.003	27.519 +0.044	21.127	<b>1'36.670</b> 1'36.759	24	0.089
27 <b>19 KARLSSON W.</b> (SWE)	Tatuus F.4 T421	23.923 +0.136	24.044	27.625 +0.110	21.183 +0.071	<b>1'36.775</b> 1'37.092	29	0.317
28 <b>78 BLOKINA V.</b>	Tatuus F.4 T421	24.088 +0.042	24.137	27.418 +0.116	21.144 +0.033	<b>1'36.787</b> 1'36.978	27	0.191
29 <b>14 LUND F.</b> (DEN)	Tatuus F.4 T421	24.071 +0.194	24.101	27.433	21.261 +0.064	<b>1'36.866</b> 1'37.124	30	0.258
30 <b>23 PARTYSHEV O.</b> (UKR)	Tatuus F.4 T421	24.080 +0.015	24.171	27.548	21.144 +0.027	<b>1'36.943</b> 1'36.985	28	0.042
31 <b>48 SPERANDIO E.</b> (CHE)	Tatuus F.4 T421	24.048 +0.062	24.130 +0.068	27.664 +0.063	21.276	<b>1'37.118</b> 1'37.311	32	0.193
32 <b>21 FRASSINETI A.</b> (ITA)	Tatuus F.4 T421	24.129	24.161 +0.035	27.645 +0.017	21.234 +0.020	<b>1'37.169</b> 1'37.241	31	0.072
33 <b>61 MASCHIO G.</b> (ITA)	Tatuus F.4 T421	24.340 +0.011	24.353 +0.114	27.655 +0.199	21.413 +0.116	<b>1'37.761</b> 1'38.201	33	0.440

03/06/2022

Powered by FICr PERUGIA TIMING





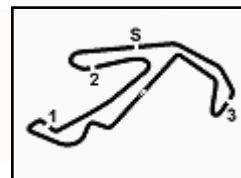
# ACI Racing Weekend Misano, 4-5 Giugno 2022

## Italian F4 Championship - Ideal Time Free Practice 2

 Misano Circuit Sic 58 4.226 m  
**2 / 2**

No. Driver	Car	Seg. 1	Seg. 2	Seg. 3	Seg. 4	Ideal Time		
		Diff. 1	Diff. 2	Diff. 3	Diff. 4	Best Lap	Pos.	Diff.
34 <b>36 AKHMED I.</b> (UZB)	Tatuus F.4 T421	24.307 +0.123	24.415 +0.076	27.908	21.412 +0.082	<b>1'38.042</b>	34	0.281
35 <b>29 RISHAB A.</b> (SGP)	Tatuus F.4 T421	24.475 +0.045	24.269	27.982	21.491 +0.172	<b>1'38.217</b>	35	0.217
<b>62 QUONDAMCARLO M.</b> ( )	Tatuus F.4 T421					<b>1'38.434</b>		
<b>Overall Ideal Time</b>		23.524	23.698	26.988	20.699	<b>1'34.909</b>		





## ACI Racing Weekend Misano, 4-5 Giugno 2022

### Italian F4 Championship - Chronological Analysis Free Practice 2

Misano Circuit Sic 58.4.226 m

**1 / 7**

2 A. DEUKMEDJAN (1'36.613)							
Lap	Seg.1	Seg.2	Seg.3	Seg.4	Lap Time	km/h	Local Time
1		26.188	30.291	26.184	1'01.353	160.2	17:12'02.224
2	24.860	24.938	28.879	38.480	1'57.157P	183,7	17:13'59.381
3	1'14.841	24.584	28.098	21.820	2'29.343P	193,9	17:16'28.724
4	24.733	24.381	27.878	21.352	1'38.344	193,9	17:18'07.068
5	24.559	24.269	27.847	21.255	1'37.930	193,2	17:19'44.998
6	24.224	24.238	27.697	21.361	1'37.520	194,6	17:21'22.518
7	24.137	24.346	27.647	21.505	1'37.635	193,9	17:23'00.153
8	24.128	24.288	27.588	21.132	1'37.136	195,3	17:24'37.289
9	24.211	24.288	27.637	21.259	1'37.395	194,2	17:26'14.684
10	24.553	24.206	27.727	21.619	1'38.105	194,9	17:27'52.789
11	24.293	24.193	<b>27.442</b>	21.255	1'37.183	<b>195,7</b>	17:29'29.972
12	24.156	24.278	27.730	36.237	1'52.401P	193,2	17:31'22.373
13	3'51.225	27.279	29.090	21.845	5'09.439P	191,8	17:36'31.812
14	24.550	24.260	27.712	21.155	1'37.677	193,5	17:38'09.489
15	24.056	24.166	27.557	<b>21.005</b>	1'36.784	193,5	17:39'46.273
16	23.854	24.186	27.533	21.040	<b>1'36.613</b>	193,5	17:41'22.886
17	<b>23.841</b>	24.234	27.542	21.213	1'36.830	192,9	17:42'59.716
18	23.970	36.941	36.612	21.180	1'58.703	166,4	17:44'58.419
19	23.915	<b>24.099</b>	27.560	21.086	1'36.660C	192,9	17:46'35.079
20	24.008	24.137	27.564	21.187	1'36.896	193,2	17:48'11.975
21	24.228	24.132	27.574	22.455	1'38.389	<b>195,7</b>	17:49'50.364
22	23.946	24.144	27.639	21.185	1'36.914	193,2	17:51'27.278

11 P. PERINO (1'36.663)							
Lap	Seg.1	Seg.2	Seg.3	Seg.4	Lap Time	km/h	Local Time
1		26.654	29.340	40.244	1'46.298	188,5	17:12'22.298
2	1'10.131	25.289	28.879	21.836	2'26.135P	191,2	17:14'48.433
3	25.427	24.512	28.250	21.838	1'40.027	192,9	17:16'28.460
4	24.322	24.457	28.126	21.442	1'38.347	193,2	17:18'06.807
5	24.288	24.328	27.655	21.347	1'37.618	194,2	17:19'44.425
6	24.158	24.392	27.647	21.280	1'37.477	194,6	17:21'21.902
7	24.004	24.369	27.749	21.315	1'37.437C	193,9	17:22'59.339
8	24.055	24.267	27.715	21.415	1'37.452	193,9	17:24'36.791
9	24.139	24.312	27.746	21.268	1'37.465	194,2	17:26'14.256
10	24.471	24.332	27.809	21.385	1'37.997	193,9	17:27'52.253
11	24.179	24.282	27.689	22.100	1'38.250	193,5	17:29'30.503
12	24.234	24.305	27.741	21.286	1'37.566	194,9	17:31'08.069
13	24.062	24.269	27.567	21.228	1'37.126	193,5	17:32'45.195
14	24.051	24.324	27.712	35.100	1'51.187P	193,9	17:34'36.382
15	4'13.766	29.351	31.542	25.131	5'39.790P	176,5	17:40'16.172
16	24.250	24.211	27.687	21.417	1'37.565	195,3	17:41'53.737
17	24.425	24.158	<b>27.460</b>	23.835	1'39.878	<b>195,7</b>	17:43'33.615
18	40.747	24.194	27.588	21.332	1'53.861	194,2	17:45'27.476
19	23.920	24.165	27.570	<b>21.028</b>	1'36.683	193,9	17:47'04.159
20	<b>23.867</b>	<b>24.115</b>	27.530	21.151	<b>1'36.663</b>	194,9	17:48'40.822
21	23.945	24.146	27.574	21.152	1'36.817	193,5	17:50'17.639

7 C. WURZ (1'35.659)							
Lap	Seg.1	Seg.2	Seg.3	Seg.4	Lap Time	km/h	Local Time
1		27.196	29.893	22.589	1'20.567	188,8	17:12'15.931
2	25.656	25.007	28.600	43.657	2'02.920P	186,2	17:14'18.851
3	1'36.342	25.076	28.926	21.366	2'51.710P	180,9	17:17'10.561
4	23.967	24.072	27.440	21.210	1'36.689	196,4	17:18'47.250
5	23.914	23.978	27.326	21.110	1'36.328	196,0	17:20'23.578
6	23.800	23.955	27.229	21.024	1'36.008	195,7	17:21'59.586
7	27.669	25.968	28.073	21.065	1'42.775	195,3	17:23'42.361
8	23.785	23.989	27.170	20.926	1'35.870	196,4	17:25'18.231
9	23.898	23.896	27.351	36.665	1'51.810P	196,0	17:27'10.041
10	8'51.335	30.543	32.516	22.602	10'16.996P	151,9	17:37'27.037
11	25.135	24.610	28.019	21.219	1'38.983	193,5	17:39'06.020
12	23.861	23.965	27.421	21.084	1'36.331	195,3	17:40'42.351
13	<b>23.687</b>	23.868	27.379	21.005	1'35.939	194,9	17:42'18.290
14	<b>23.687</b>	23.832	27.417	37.727	1'52.663	194,6	17:44'10.953
15	26.126	24.733	28.925	21.937	1'41.721	195,3	17:45'52.674
16	23.707	<b>23.804</b>	<b>27.108</b>	21.160	1'35.779	196,4	17:47'28.453
17	23.820	23.823	27.135	<b>20.881</b>	<b>1'35.659</b>	<b>197,1</b>	17:49'04.112

12 K. ANTONELLI (1'35.447)							
Lap	Seg.1	Seg.2	Seg.3	Seg.4	Lap Time	km/h	Local Time
1		26.167	29.424	44.536	1'40.153	189,5	17:12'27.688
2	1'07.688	25.097	29.228	21.632	2'23.645P	188,5	17:14'51.333
3	24.286	24.203	28.022	25.907	1'42.418	<b>197,8</b>	17:16'33.751
4	23.953	24.065	29.292	21.354	1'38.664	196,7	17:18'12.415
5	23.775	23.964	27.239	20.968	1'35.946	<b>197,8</b>	17:19'48.361
6	25.342	31.210	35.889	21.113	1'53.554	145,7	17:21'41.915
7	23.618	23.998	27.275	20.982	1'35.873	196,0	17:23'17.788
8	23.654	23.919	27.226	20.858	1'35.657	195,3	17:24'53.445
9	23.632	23.816	<b>27.076</b>	32.425	1'46.949P	197,1	17:26'40.394
10	9'03.426	28.600	32.352	23.536	10'27.914P	168,8	17:37'08.308
11	25.804	25.036	28.493	21.373	1'40.706	193,9	17:38'49.014
12	23.769	23.879	27.340	20.909	1'35.897	197,1	17:40'24.911
13	23.568	23.805	27.325	<b>20.782</b>	1'35.480	197,4	17:42'00.391
14	27.696	28.302	31.169	41.622	2'08.789	180,3	17:44'09.180
15	25.367	24.584	28.093	22.807	1'40.851	194,2	17:45'50.031
16	23.694	23.883	27.130	20.836	1'35.543	196,7	17:47'25.574
17	<b>23.524</b>	23.705	27.442	20.850	1'35.521	195,7	17:49'01.095
18	23.555	<b>23.698</b>	27.311	20.883	<b>1'35.447</b>	196,0	17:50'36.542

9 A. SPINA (1'36.386)							
Lap	Seg.1	Seg.2	Seg.3	Seg.4	Lap Time	km/h	Local Time
1					17:10'32.089		
2	53.558	29.799	33.775	26.215	2'23.347P	174,2	17:12'55.436
3	27.570	26.613	29.489	36.069	1'59.741P	189,1	17:14'55.177
4	1'13.697	26.947	29.502	22.325	2'32.471P	194,2	17:17'27.648
5	25.974	25.006	28.678	23.205	1'42.863	192,2	17:19'10.511
6	24.278	24.481	27.663	21.294	1'37.716	196,7	17:20'48.227
7	27.457	26.763	28.295	21.716	1'44.231	195,3	17:22'32.458
8	23.967	24.097	27.609	21.114	1'36.787	<b>197,1</b>	17:24'09.245
9	25.872	24.689	28.033	21.374	1'39.968	194,9	17:25'49.213
10	24.099	24.083	27.873	3'50.350	5'06.405P	193,5	17:30'55.618
11	50.414	26.694	29.693	23.040	2'09.841P	191,2	17:33'05.459
12	26.037	24.925	28.485	21.499	1'40.946	191,5	17:34'46.405
13	24.146	24.052	27.672	21.201	1'37.071	194,2	17:36'23.476
14	23.921	24.128	27.670	21.148	1'36.867	193,5	17:38'00.343
15	<b>23.862</b>	24.003	<b>27.481</b>	<b>21.040</b>	<b>1'36.386</b>	195,7	17:39'36.729
16	25.009	25.031	29.183	21.297	1'40.520	192,5	17:41'17.249

13 J. WHARTON (1'35.718)							
Lap	Seg.1	Seg.2	Seg.3	Seg.4	Lap Time	km/h	Local Time
1		25.412	28.648	48.943	1'42.003	193,5	17:12'32.829
2	1'26.936	24.991	28.346	21.680	2'41.953P	193,9	17:15'14.782
3	24.716	24.712	28.276	21.335	1'39.039	195,3	17:16'53.821
4	24.204	24.301	27.641	21.163	1'37.309	194,9	17:18'31.130
5	24.040	24.117	27.450	21.092	1'36.699	197,4	17:20'07.829
6	23.913	23.987	27.375	20.968	1'36.243	196,0	17:21'44.072
7	26.270	29.073	32.678	21.190	1'49.211	154,7	17:23'33.283
8	23.945	24.034	27.375	21.062	1'36.416	195,7	17:25'09.699
9	23.881	23.921	27.472	20.988	1'36.262	195,3	17:26'45.961
10	23.920	24.098	27.690	32.440	1'48.148P	197,1	17:28'34.109

03/06/2022

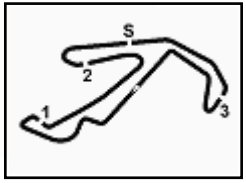
P = Pits In/Out - C = Lap Time Cancelled

Powered by FICr PERUGIA TIMING





2.5



# ACI Racing Weekend Misano, 4-5 Giugno 2022

## Italian F4 Championship - Chronological Analysis Free Practice 2

Misano Circuit Sic 58 4.226 m

2 / 7

11	7'11.051	28.680	32.067	23.540	8'35.338P	168,8	17:37'09.447	6	24.125	24.087	27.522	21.040	1'36.774	196,0	17:21'50.749
12	25.593	24.944	28.317	21.963	1'40.817	193,2	17:38'50.264	7	23.797	24.090	27.788	21.118	1'36.793	194,9	17:23'27.542
13	23.815	23.913	27.383	20.990	1'36.101C	195,7	17:40'26.365	8	23.849	24.085	27.597	21.081	1'36.612	193,9	17:25'04.154
14	23.834	23.923	27.171	20.929	1'35.857	198,9	17:42'02.222	9	23.896	24.096	27.673	21.035	1'36.700	195,7	17:26'40.854
15	26.382	29.122	30.293	41.582	2'07.379	176,8	17:44'09.601	10	25.061	29.896	31.485	21.281	1'47.723	190,8	17:28'28.577
16	25.735	24.313	28.430	23.537	1'42.015	192,2	17:45'51.616	11	23.916	24.097	27.627	21.169	1'36.809	192,9	17:30'05.386
17	23.711	23.828	27.262	20.917	1'35.718	194,9	17:47'27.334	12	23.889	24.234	27.978	34.010	1'50.111P	194,9	17:31'55.497
18	23.756	23.858	27.273	20.902	1'35.789	197,4	17:49'03.123	13	4'46.991	26.023	28.596	21.377	6'02.987P	188,5	17:37'58.484

### 14 F. LUND (1'37.124)

Lap	Seg.1	Seg.2	Seg.3	Seg.4	Lap Time	km/h	Local Time
1		27.315	30.360	22.670	190,8	17:12'15.491	
2	27.492	26.083	28.600	21.765	1'43.940	192,5	17:13'59.431
3	25.362	25.230	28.899	21.865	1'41.356	193,9	17:15'40.787
4	24.938	24.457	28.009	21.486	1'38.890	194,6	17:17'19.677
5	27.680	33.253	31.605	21.723	1'54.261	173,6	17:19'13.938
6	24.294	24.403	27.873	21.447	1'38.017	194,9	17:20'51.955
7	24.393	24.336	27.761	21.464	1'37.954	194,6	17:22'29.909
8	24.133	24.319	27.740	21.276	1'37.468	194,6	17:24'07.377
9	24.251	24.222	27.892	4'12.553	5'28.918P	194,6	17:29'36.295
10	47.124	27.077	32.882	23.101	2'10.184P	161,4	17:31'46.479
11	25.525	25.208	28.706	22.095	1'41.534	193,5	17:33'28.013
12	24.152	24.300	27.753	21.318	1'37.523	195,7	17:35'05.536
13	24.101	24.181	28.308	22.069	1'38.659	196,4	17:36'44.195
14	27.683	25.035	27.729	21.277	1'41.724	195,7	17:38'25.919
15	24.608	24.555	27.673	21.267	1'38.103	196,0	17:40'04.022
16	24.071	24.108	27.603	21.346	1'37.128C	195,3	17:41'41.150
17	24.228	24.229	27.597	21.261	1'37.315	194,9	17:43'18.465
18	26.588	38.024	27.835	21.435	1'53.882	197,1	17:45'12.347
19	24.265	24.101	27.433	21.325	1'37.124	198,2	17:46'49.471
20	24.275	24.235	27.721	2'23.029	3'39.260P	196,0	17:50'28.731

### 18 K. HWARANG (1'36.759)

Lap	Seg.1	Seg.2	Seg.3	Seg.4	Lap Time	km/h	Local Time
1							17:10'01.363
2	1'14.706	27.988	30.958	47.847	3'01.499P	179,4	17:13'02.862
3	1'41.166	25.576	28.510	40.508	3'15.760P	194,6	17:16'18.622
4	1'02.177	24.798	28.143	21.648	2'16.766P	194,2	17:18'35.388
5	24.462	24.332	27.919	21.422	1'38.135	195,3	17:20'13.523
6	24.964	24.313	27.753	21.282	1'38.312	196,4	17:21'51.835
7	24.158	24.225	27.857	21.346	1'37.586	195,3	17:23'29.421
8	24.184	24.264	27.695	5'15.041	6'31.184P	195,3	17:30'00.605
9	49.055	28.363	30.706	23.190	2'11.314P	178,5	17:32'11.919
10	26.121	25.726	29.692	23.710	1'45.249	187,2	17:33'57.168
11	24.960	26.819	29.995	21.335	1'43.109	192,9	17:35'40.277
12	24.111	24.134	27.705	21.175	1'37.125	196,4	17:37'17.402
13	24.021	24.171	27.851	21.513	1'37.556	196,4	17:38'54.958
14	24.177	24.108	27.519	21.158	1'36.962	196,7	17:40'31.920
15	24.666	24.243	27.532	21.194	1'37.635	196,7	17:42'09.555
16	24.103	24.117	30.780	1'15.302	2'34.302P	165,9	17:44'43.857
17	42.814	24.792	30.463	22.103	2'00.172P	184,9	17:46'44.029
18	24.066	24.003	27.563	21.127	1'36.759	197,1	17:48'20.788

### 15 N. BEDRIN (1'35.950)

Lap	Seg.1	Seg.2	Seg.3	Seg.4	Lap Time	km/h	Local Time
1		28.598	32.756	23.716	155,8	17:12'35.116	
2	25.850	25.015	29.188	28.084	1'48.137	185,2	17:14'23.253
3	25.106	24.534	27.768	21.358	1'38.766	193,2	17:16'02.019
4	24.257	24.286	27.482	21.178	1'37.203	195,7	17:17'39.222
5	24.487	24.247	27.417	21.278	1'37.429	197,4	17:19'16.651
6	23.987	24.143	27.308	21.132	1'36.570	198,9	17:20'53.221
7	23.975	24.170	27.481	21.311	1'36.937	197,1	17:22'30.158
8	28.069	25.310	30.443	21.279	1'45.101	166,7	17:24'15.259
9	24.065	24.124	27.213	21.066	1'36.468	196,4	17:25'51.727
10	23.988	24.046	27.337	35.666	1'51.037P	196,7	17:27'42.764
11	4'51.730	28.264	32.434	23.185	6'15.613P	169,0	17:33'58.377
12	25.913	25.876	28.177	21.237	1'41.203	190,1	17:35'39.580
13	23.967	24.061	27.367	20.997	1'36.392	193,5	17:37'15.972
14	23.801	24.021	27.413	20.959	1'36.194	195,7	17:38'52.166
15	23.833	23.974	27.303	22.411	1'37.521	197,1	17:40'29.687
16	23.797	23.937	27.126	21.090	1'35.950	197,1	17:42'05.637
17	23.834	24.028	27.316	37.705	1'52.883	197,4	17:43'58.520
18	32.295	24.794	27.524	21.312	1'45.925	193,9	17:45'44.445
19	23.872	24.015	27.241	21.000	1'36.128	194,2	17:47'20.573
20	24.175	26.097	34.234	21.284	1'45.790	151,9	17:49'06.363
21	23.804	24.047	27.298	20.964	1'36.113	197,1	17:50'42.476

### 19 W. KARLSSON (1'37.092)

Lap	Seg.1	Seg.2	Seg.3	Seg.4	Lap Time	km/h	Local Time
1							17:10'07.041
2	1'11.158	30.711	34.795	45.634	3'02.298P	155,6	17:13'09.339
3	1'52.277	27.464	34.456	40.772	3'34.969P	166,2	17:16'44.308
4	59.729	25.674	28.160	21.823	2'15.386P	193,9	17:18'59.694
5	24.676	24.680	27.882	21.643	1'38.881	193,5	17:20'38.575
6	24.360	24.493	27.889	21.620	1'38.362	192,9	17:22'16.937
7	24.244	24.546	28.055	22.242	1'39.087	191,8	17:23'56.024
8	24.468	24.510	27.899	4'53.184	6'10.061P	192,9	17:30'06.085
9	45.597	30.893	35.027	25.203	2'16.720P	151,0	17:32'22.805
10	27.966	27.707	30.967	22.931	1'49.571	182,1	17:34'12.376
11	24.920	24.685	27.967	21.541	1'39.113	193,5	17:35'51.489
12	24.177	24.157	27.746	21.358	1'37.438	193,9	17:37'28.927
13	24.286	24.197	27.758	21.379	1'37.620	194,9	17:39'06.547
14	24.189	24.228	27.680	21.225	1'37.322	193,5	17:40'43.869
15	23.958	24.180	27.800	21.183	1'37.121	194,6	17:42'20.990
16	23.923	24.124	27.784	35.739	1'51.570	193,9	17:44'12.560
17	25.166	24.525	29.364	22.621	1'41.676	191,5	17:45'54.236
18	24.059	24.044	27.735	21.254	1'37.092	193,9	17:47'31.328
19	24.064	24.162	27.625	21.378	1'37.229	194,6	17:49'08.557
20	24.182	24.307	27.729	21.433	1'37.651	191,8	17:50'46.208

### 17 E. FITTIPALDI (1'36.066)

Lap	Seg.1	Seg.2	Seg.3	Seg.4	Lap Time	km/h	Local Time
1		26.114	30.033	22.463	187,5	17:11'59.786	
2	25.268	25.244	34.902	48.434	2'13.848P	176,5	17:14'13.634
3	1'32.352	24.839	28.071	21.347	2'46.609P	193,5	17:17'00.243
4	23.972	24.211	27.617	21.337	1'37.137	194,2	17:18'37.380
5	23.954	24.085	27.427	21.129	1'36.595	197,1	17:20'13.975

### 20 C. LAURSEN (1'35.792)

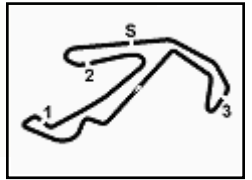
Lap	Seg.1	Seg.2	Seg.3	Seg.4	Lap Time	km/h	Local Time
-----	-------	-------	-------	-------	----------	------	------------

03/06/2022 P = Pits In/Out - C = Lap Time Cancelled

Powered by FICr PERUGIA TIMING







# ACI Racing Weekend Misano, 4-5 Giugno 2022

## Italian F4 Championship - Chronological Analysis Free Practice 2

Misano Circuit Sic 58 4.226 m

3 / 7

1		26.198	29.106	47.439		186,9	17:12'33.830	20	23.698	24.024	32.185	21.539	1'41.446	145,9	17:49'25.200
2	1'27.719	25.348	28.531	21.719	2'43.317P	191,2	17:15'17.147	21	23.675	<b>23.947</b>	<b>27.250</b>	<b>20.905</b>	<b>1'35.777</b>	194,6	17:51'00.977
3	24.483	24.580	27.969	21.401	1'38.433	194,2	17:16'55.580								
4	23.996	24.162	27.606	21.222	1'36.986	194,6	17:18'32.566								
5	23.884	24.046	27.469	21.121	1'36.520	196,0	17:20'09.086								
6	23.833	25.244	36.318	26.356	1'51.751	130,8	17:22'00.837								
7	23.808	24.140	27.462	20.956	1'36.366	194,6	17:23'37.203								
8	23.744	24.087	27.392	21.031	1'36.254	195,7	17:25'13.457								
9	23.839	23.990	<b>27.260</b>	20.911	1'36.000	195,3	17:26'49.457								
10	23.768	23.974	27.448	35.612	1'50.802P	<b>197,8</b>	17:28'40.259								
11	7'34.129	30.479	31.714	23.798	9'00.120P	172,2	17:37'40.379								
12	26.255	25.361	27.986	21.313	1'40.915	188,2	17:39'21.294								
13	23.775	24.003	27.397	21.062	1'36.237	196,4	17:40'57.531								
14	23.727	23.948	27.318	<b>20.799</b>	<b>1'35.792</b>	197,1	17:42'33.323								
15	<b>23.667</b>	<b>23.910</b>	37.594	24.080	1'49.251	152,8	17:44'22.574								
16	23.688	23.916	27.312	21.446	1'36.362	195,7	17:45'58.936								
17	23.672	23.943	27.343	21.078	1'36.036	194,9	17:47'34.972								
18	28.349	26.613	27.456	21.087	1'43.505	194,2	17:49'18.477								

**23 O. PARTYSHEV (1'36.985)**

Lap	Seg.1	Seg.2	Seg.3	Seg.4	Lap Time	km/h	Local Time
1		27.173	29.840	22.692	1:41.367	185,9	17:12'17.110
2	25.918	25.348	28.449	21.652	1:41.367	189,8	17:13'58.477
3	24.628	24.642	28.260	21.573	1:39.103	194,6	17:15'37.580
4	24.520	24.352	27.846	21.414	1:38.132	194,2	17:17'15.712
5	24.256	24.314	27.715	21.815	1:38.100	<b>194,9</b>	17:18'53.812
6	24.338	24.311	27.720	21.335	1:37.704	193,9	17:20'31.516
7	25.227	28.246	31.516	22.357	1:47.346	173,6	17:22'18.862
8	24.291	24.342	27.729	21.507	1:37.869	193,9	17:23'56.731
9	24.437	24.252	27.805	21.481	1:37.975	194,6	17:25'34.706
10	24.219	24.286	27.696	21.352	1:37.553	193,9	17:27'12.259
11	24.318	24.316	27.811	4'30.641	5'47.086P	193,9	17:32'59.345
12	46.687	31.945	39.238	23.838	2'21.708P	135,2	17:35'21.053
13	26.135	25.905	29.183	21.374	1:42.597	189,5	17:37'03.650
14	24.198	24.328	27.653	21.431	1:37.610	193,2	17:38'41.260
15	24.095	<b>24.171</b>	<b>27.548</b>	21.171	<b>1'36.985</b>	<b>194,2</b>	17:40'18.245
16	24.154	24.187	27.573	21.189	1:37.103	<b>194,9</b>	17:41'55.348
17	<b>24.080</b>	24.612	27.583	3'10.622	4'26.897P	192,9	17:46'22.245
18	41.265	24.589	27.907	<b>21.144</b>	1'54.905P	192,9	17:48'17.150

**21 A. FRASSINETI (1'37.241)**

Lap	Seg.1	Seg.2	Seg.3	Seg.4	Lap Time	km/h	Local Time
1							17:10'29.801
2	50.240	27.807	29.322	59.001	2'46.370P	191,8	17:13'16.171
3	1'50.193	25.649	31.054	26.449	3'13.345P	189,8	17:16'29.516
4	25.055	25.218	28.335	21.589	1'40.197	194,9	17:18'09.713
5	24.409	24.586	27.838	21.328	1'38.161	196,7	17:19'47.874
6	24.357	24.424	27.849	21.318	1'37.948	196,0	17:21'25.822
7	24.322	24.330	27.853	<b>21.234</b>	1'37.739	196,0	17:23'03.561
8	24.189	24.285	27.780	22.418	1'38.672	193,9	17:24'42.233
9	24.222	24.361	27.948	21.447	1'37.978	196,0	17:26'20.211
10	24.362	24.363	28.708	5'00.724	6'18.157P	196,7	17:32'38.368
11	45.690	28.639	31.193	23.342	2'08.864P	167,2	17:34'47.232
12	25.600	33.029	35.261	22.646	1'56.536	163,4	17:36'43.768
13	25.695	24.788	28.381	21.475	1'40.339	195,3	17:38'24.107
14	24.515	24.345	27.746	21.445	1'38.051	196,7	17:40'02.158
15	24.352	24.233	<b>27.645</b>	21.364	1'37.594	195,3	17:41'39.752
16	24.176	<b>24.161</b>	27.675	21.922	1'37.934	<b>197,4</b>	17:43'17.686
17	26.066	40.441	28.238	24.937	1'59.682	194,9	17:45'17.368
18	<b>24.129</b>	24.196	27.662	21.254	<b>1'37.241</b>	196,7	17:46'54.609
19	24.329	25.972	29.790	22.356	1'42.447	190,1	17:48'37.056
20	24.130	24.262	27.695	21.311	1'37.398	195,3	17:50'14.454

**27 E. ISCHER (1'36.935)**

Lap	Seg.1	Seg.2	Seg.3	Seg.4	Lap Time	km/h	Local Time
1		29.171	31.350	23.118	1:44.503	173,1	17:14'14.393
2	25.041	26.692	30.822	21.948	1:44.503	173,1	17:14'14.393
3	24.642	24.420	27.941	21.537	1:38.540	194,2	17:15'52.933
4	24.619	24.336	27.922	21.455	1:38.332C	194,9	17:17'31.265
5	24.112	24.455	27.854	21.835	1:38.256	<b>196,7</b>	17:19'09.521
6	24.103	24.186	27.632	21.330	1:37.251	195,3	17:20'46.772
7	24.145	24.168	27.616	21.302	1:37.231	194,9	17:22'24.003
8	24.163	24.965	27.695	21.512	1:38.335	194,6	17:24'02.338
9	24.002	24.121	27.568	21.342	1:37.033	195,7	17:25'39.371
10	24.059	24.088	27.559	21.278	1:36.984	194,9	17:27'16.355
11	24.007	24.103	27.767	3'42.750	4'58.627P	195,7	17:32'14.982
12	44.171	28.740	34.203	22.583	2'09.697P	139,0	17:34'24.679
13	26.560	27.189	28.125	21.316	1'43.190	189,5	17:36'07.869
14	23.993	24.088	27.596	<b>21.258</b>	<b>1'36.935</b>	195,3	17:37'44.804
15	<b>23.956</b>	24.113	27.529	21.357	1:36.955	196,0	17:39'21.759
16	24.068	24.022	<b>27.465</b>	21.808	1:37.363	195,7	17:40'59.122
17	24.142	<b>23.961</b>	27.607	21.419	1:37.129	195,3	17:42'36.251

**22 A. DUNNE (1'35.777)**

Lap	Seg.1	Seg.2	Seg.3	Seg.4	Lap Time	km/h	Local Time
1		26.129	29.193	46.277		187,5	17:12'29.695
2	1'21.321	24.548	27.622	21.140	2'34.631P	195,7	17:15'04.326
3	24.248	24.283	27.502	21.117	1'37.150	196,7	17:16'41.476
4	24.049	24.200	27.529	21.082	1'36.860C	197,1	17:18'18.336
5	23.994	24.089	27.318	21.096	1'36.497	197,8	17:19'54.833
6	24.031	24.125	27.363	21.051	1'36.570	195,3	17:21'31.403
7	23.861	24.081	27.332	21.076	1'36.350	196,0	17:23'07.753
8	24.009	24.097	27.393	21.143	1'36.642	197,4	17:24'44.395
9	23.981	24.125	27.294	21.178	1'36.578	198,2	17:26'20.973
10	24.155	24.188	27.681	21.124	1'37.148	197,1	17:27'58.121
11	24.021	24.072	27.459	21.128	1'36.680	198,5	17:29'34.801
12	23.963	24.077	27.383	21.215	1'36.638	197,1	17:31'11.439
13	23.998	24.119	27.394	21.072	1'36.583	195,3	17:32'48.022
14	24.301	24.589	27.841	32.904	1'49.635P	194,6	17:34'37.657
15	5'00.675	25.458	28.637	21.864	6'16.634P	190,8	17:40'54.291
16	24.309	24.272	27.628	21.159	1'37.368	195,7	17:42'31.659
17	23.729	23.965	37.008	24.907	1'49.609	146,3	17:44'21.268
18	23.706	23.973	31.798	27.148	1'46.625C	<b>198,9</b>	17:46'07.893
19	<b>23.659</b>	<b>23.947</b>	27.285	20.970	1'35.861	<b>198,9</b>	17:47'43.754

**28 V. KLUSS (1'36.490)**

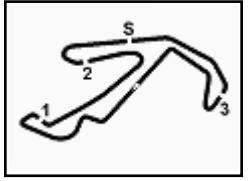
Lap	Seg.1	Seg.2	Seg.3	Seg.4	Lap Time	km/h	Local Time
1		28.785	31.287	22.964	1:43.699	172,8	17:14'12.293
2	25.093	26.233	30.357	22.016	1:43.699	172,8	17:14'12.293
3	24.633	24.569	27.818	21.538	1:38.558	193,5	17:15'50.851
4	24.163	24.260	27.754	21.369	1:37.546	195,3	17:17'28.397
5	24.565	24.242	28.191	21.455	1:38.453	193,2	17:19'06.850
6	24.048	24.253	27.503	21.269	1:37.073	195,3	17:20'43.923
7	<b>23.851</b>	24.508	27.627	4'47.053	6'03.039P	195,3	17:26'46.962
8	46.455	29.957	33.325	23.136	2'12.873P	154,7	17:28'59.835
9	25.863	27.034	31.070	21.521	1:45.488	169,3	17:30'45.323
10	24.019	24.224	27.508	21.222	1:36.973	194,6	17:32'22.296
11	23.885	<b>24.058</b>	27.434	21.113	<b>1'36.490</b>	194,6	17:33'58.786
12	24.382	27.034	34.591	21.252	1'47.259	151,7	17:35'46.045
13	23.979	24.092	27.418	<b>21.052</b>	1:36.541	<b>195,7</b>	17:37'22.586
14	23.951	24.081	<b>27.352</b>	21.171	1:36.555	194,6	17:38'59.141

**29 A. RISHAB (1'38.434)**

Lap	Seg.1	Seg.2
-----	-------	-------



2.5



# ACI Racing Weekend Misano, 4-5 Giugno 2022

## Italian F4 Championship - Chronological Analysis Free Practice 2

Misano Circuit Sic 58 4.226 m

4 / 7

Lap	Seg.1	Seg.2	Seg.3	Seg.4	Lap Time	km/h	Local Time
1	1'01.154	29.729	30.279	46.756	2'47.918P	188,5	17:10'17.700
2	1'47.444	26.894	31.403	22.495	3'08.236P	189,1	17:13'05.618
3	25.619	25.724	29.271	22.217	1'42.831	192,2	17:16'13.854
4	25.174	24.783	28.657	22.118	1'40.732	<b>194,6</b>	17:17'56.685
5	25.102	25.239	28.675	4'55.872	6'14.888P	194,2	17:19'37.417
6	48.502	30.394	33.969	25.593	2'18.458P	152,1	17:25'52.305
7	27.143	25.655	29.150	22.474	1'44.422	191,8	17:28'10.763
8	25.067	24.895	28.812	21.886	1'40.660	191,8	17:29'55.185
9	24.987	24.723	28.369	22.282	1'40.361	193,2	17:31'35.845
10	24.982	24.510	28.377	21.585	1'39.454	193,5	17:33'16.206
12	24.579	24.653	28.208	21.699	1'39.139	192,9	17:34'55.660
13	24.598	24.298	28.105	<b>21.491</b>	1'38.492	193,2	17:36'34.799
14	24.520	<b>24.269</b>	<b>27.982</b>	21.663	<b>1'38.434</b>	<b>194,6</b>	17:38'13.291
15	<b>24.475</b>	24.455	28.050	1'39.065	2'56.045P	193,5	17:39'51.725
16	41.738	34.108	35.538	21.835	2'13.219P	144,8	17:42'47.770
17	24.818	24.617	28.454	21.824	1'39.713	193,5	17:45'00.989
18	24.617	24.489	28.966	25.354	1'43.426	192,2	17:46'40.702
19	24.559	24.379	28.028	21.593	1'38.559	193,2	17:48'24.128
18	<b>23.774</b>						17:50'02.687
19	23.783						
20	23.811						

35 P. CLEROT (1'36.807)							
Lap	Seg.1	Seg.2	Seg.3	Seg.4	Lap Time	km/h	Local Time
1		27.531	32.655	41.598		168,5	17:12'55.016
2	1'29.012	25.582	28.797	21.895	2'45.286P	182,7	17:15'40.302
3	24.507	24.541	27.926	21.442	1'38.416	193,2	17:17'18.718
4	24.703	24.407	27.584	21.271	1'37.965	195,3	17:18'56.683
5	24.221	24.329	27.606	21.252	1'37.408	193,5	17:20'34.091
6	24.146	24.154	27.727	21.304	1'37.331	193,2	17:22'11.422
7	24.011	24.219	<b>27.496</b>	21.286	1'37.012	195,7	17:23'48.434
8	24.085	24.344	27.680	21.169	1'37.278	194,2	17:25'25.712
9	24.277	24.267	27.529	35.052	1'51.125P	194,2	17:27'16.837
10	7'52.113	36.469	34.275	22.901	9'25.758P	164,6	17:36'42.595
11	25.651	25.023	28.929	21.312	1'40.915	174,5	17:38'23.510
12	24.178	24.052	27.693	21.579	1'37.502	194,2	17:40'01.012
13	<b>23.953</b>	24.117	27.608	<b>21.129</b>	<b>1'36.807</b>	192,5	17:41'37.819
14	24.024	24.142	27.672	22.715	1'38.553	<b>196,7</b>	17:43'16.372
15	26.707	38.442	28.486	21.856	1'55.491	188,8	17:45'11.863
16	24.061	24.048	27.548	21.169	1'36.826	194,2	17:46'48.689
17	24.117	24.119	27.569	21.177	1'36.982	193,9	17:48'25.671
18	24.135	<b>24.044</b>	28.641	21.768	1'38.588	191,5	17:50'04.259

33 B. BADOER (1'36.266)							
Lap	Seg.1	Seg.2	Seg.3	Seg.4	Lap Time	km/h	Local Time
1		27.118	29.326	22.698		185,6	17:12'02.764
2	25.174	25.014	28.851	40.190	1'59.229P	190,8	17:14'01.993
3	1'19.496	24.489	27.780	21.638	2'33.403P	194,9	17:16'35.396
4	24.219	24.330	27.659	21.380	1'37.588	195,7	17:18'12.984
5	24.112	24.195	27.585	21.277	1'37.169	196,0	17:19'50.153
6	24.097	24.247	27.458	21.287	1'37.089	196,4	17:21'27.242
7	23.999	24.183	27.445	21.266	1'36.893	196,7	17:23'04.135
8	24.107	24.253	27.663	21.311	1'37.334	<b>197,8</b>	17:24'41.469
9	23.893	24.162	27.613	21.378	1'37.046	195,3	17:26'18.515
10	24.169	24.187	27.574	21.184	1'37.114	196,0	17:27'55.629
11	23.875	24.156	27.528	21.175	1'36.734	196,0	17:29'32.363
12	24.089	24.186	27.637	39.515	1'55.427P	196,0	17:31'27.790
13	3'49.685	30.064	33.296	22.687	5'15.732P	188,5	17:36'43.522
14	25.303	24.658	27.960	21.418	1'39.339	194,9	17:38'22.861
15	24.395	24.170	27.781	22.803	1'39.149	195,7	17:40'02.010
16	23.969	24.094	<b>27.329</b>	21.962	1'37.354	197,1	17:41'39.364
17	23.875	24.076	27.330	22.622	1'37.903	197,4	17:43'17.267
18	26.075	39.930	28.601	21.947	1'56.553	197,4	17:45'13.820
19	<b>23.776</b>	<b>24.025</b>	27.397	<b>21.068</b>	<b>1'36.266</b>	196,0	17:46'50.086
20	24.172	24.347	28.356	21.442	1'38.317	193,9	17:48'28.403
21	23.798	24.093	27.564	21.754	1'37.209	194,9	17:50'05.612

36 I. AKHMED (1'38.323)							
Lap	Seg.1	Seg.2	Seg.3	Seg.4	Lap Time	km/h	Local Time
1		29.191	32.267	25.254		171,7	17:12'30.639
2	26.786	26.735	29.438	22.779	1'45.738	187,8	17:14'16.377
3	25.775	24.945	28.645	21.900	1'41.265	191,5	17:15'57.642
4	24.727	24.963	29.069	21.981	1'40.740	194,2	17:17'38.382
5	25.897	25.017	28.471	21.903	1'41.288	190,8	17:19'19.670
6	24.703	24.507	28.147	21.796	1'39.153	193,2	17:20'58.823
7	24.508	24.659	28.958	21.902	1'40.027	192,2	17:22'38.850
8	24.609	24.771	28.440	21.823	1'39.643	192,9	17:24'18.493
9	24.626	24.909	28.328	21.821	1'39.684	193,9	17:25'58.177
10	24.716	24.883	28.467	43.741	2'01.807P	192,2	17:27'59.984
11	3'51.732	30.047	31.515	24.581	5'17.875P	164,1	17:33'17.859
12	25.923	25.478	29.907	22.124	1'43.432	193,9	17:35'01.291
13	24.927	25.115	31.547	23.416	1'45.005	167,7	17:36'46.296
14	27.477	25.433	28.225	21.672	1'42.807	<b>196,4</b>	17:38'29.103
15	24.572	24.693	28.030	21.664	1'38.959	193,2	17:40'08.062
16	24.451	24.532	27.939	21.435	1'38.357	193,2	17:41'46.419
17	<b>24.307</b>	24.448	28.155	21.506	1'38.416	193,9	17:43'24.835
18	25.516	35.151	28.128	21.818	1'50.613	192,9	17:45'15.448
19	24.430	24.491	<b>27.908</b>	21.494	<b>1'38.323</b>	194,9	17:46'53.771
20	24.538	24.483	28.156	<b>21.412</b>	1'38.589	193,5	17:48'32.360
21	24.475	<b>24.415</b>	28.142	21.557	1'38.589	191,8	17:50'10.949

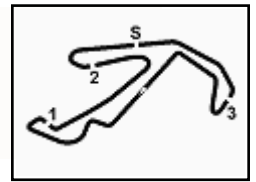
34 M. STENSHORNE (1'36.134)							
Lap	Seg.1	Seg.2	Seg.3	Seg.4	Lap Time	km/h	Local Time
1		27.630	30.704	22.287		170,6	17:12'14.592
2	24.819	25.011	28.931	36.092	1'54.853P	189,5	17:14'09.445
3	1'28.677	24.631	27.921	21.376	2'42.605P	193,5	17:16'52.050
4	24.103	24.185	27.581	21.298	1'37.167	195,3	17:18'29.217
5	23.982	24.165	27.504	21.145	1'36.796	195,3	17:20'06.013
6	23.874	24.129	27.471	21.028	1'36.502	195,3	17:21'42.515
7	23.868	24.077	27.279	21.268	1'36.492	<b>196,7</b>	17:23'19.007
8	23.852	24.148	27.524	21.111	1'36.635	<b>196,7</b>	17:24'55.642
9	23.958	24.041	27.336	21.135	1'36.470	196,4	17:26'32.112
10	24.011	24.077	27.349	21.134	1'36.571	<b>196,7</b>	17:28'08.683
11	24.036	24.078	27.405	21.144	1'36.663	<b>196,7</b>	17:29'45.346
12	24.066	24.252	27.709	36.948	1'52.975P	196,0	17:31'38.321
13	5'41.006	29.036	30.190	22.986	7'03.218P	185,9	17:38'41.539
14	25.094	24.688	27.836	22.947	1'40.565	191,5	17:40'22.104
15	23.879	23.996	27.336	21.025	1'36.236	195,7	17:41'58.340
16	23.966	23.934	<b>27.222</b>	24.172	1'39.294	196,4	17:43'37.634
17	40.342	24.291	28.083	23.213	1'55.929	193,9	17:45'33.563

37 K. SZTUKA (1'35.754)							
Lap	Seg.1	Seg.2	Seg.3	Seg.4	Lap Time	km/h	Local Time
1		26.061	29.153	40.044		187,8	17:17'26.539
2	1'01.300	25.174	28.328	21.532	2'16.334P	194,6	17:19'42.873
3	24.213	24.272	27.878	21.327	1'37.690	197,1	17:21'20.563
4	23.936	24.193	27.673	21.167	1'36.969C	197,1	17:22'57.532
5	23.807	24.168	27.610	21.195	1'36.780C	196,0	17:24'34.312
6	23.850	24.127	27.557	21.115	1'36.649	197,1	17:26'10.961
7	23.827	24.064	27.504	20.997	1'36.392	197,8	17:27'47.353
8	23.839	24.062	27.539	21.091	1'36.531	197,4	17:29'23.884
9	23.771	24.163	27.609	21.033	1'36.576C	197,1	17:31'00.460
10	23.730	24.134	27.516	21.096	1'36.476	196,7	17:32'36.936
11	23.806	24.359	27.850	21.303	1'37.318C	194,9	17:34'14.254
12	23.925	24.197	29.855	38.066	1'56.043P	177,9	17:36'10.297

03/06/2022 P = Pits In/Out - C = Lap Time Cancelled

Powered by FICr PERUGIA TIMING





# ACI Racing Weekend Misano, 4-5 Giugno 2022

## Italian F4 Championship - Chronological Analysis Free Practice 2

Misano Circuit Sic 58.4.226 m

**5 / 7**

13	3'44.658	25.225	28.372	21.511	4'59.766P	193,2	17:41'10.063	9	24.116	24.343	27.791	33.569	1'49.819P	194,6	17:26'14.725
14	23.859	24.040	27.480	20.984	1'36.363	<b>198,9</b>	17:42'46.426	10	4'38.698	28.376	29.516	22.428	5'59.018P	192,2	17:32'13.743
15	23.624	29.999	43.728	21.083	1'58.434	134,3	17:44'44.860	11	25.502	25.584	29.437	21.699	1'42.222	191,5	17:33'55.965
16	23.717	<b>23.941</b>	27.432	<b>20.884</b>	1'35.974	196,7	17:46'20.834	12	24.374	24.421	27.904	21.295	1'37.994	195,3	17:35'33.959
17	<b>23.581</b>	23.967	27.313	20.893	<b>1'35.754</b>	197,1	17:47'56.588	13	24.110	24.198	27.727	<b>21.276</b>	<b>1'37.311</b>	193,5	17:37'11.270
18	23.598	23.982	<b>27.300</b>	20.962	1'35.842	197,1	17:49'32.430	14	24.565	24.432	28.263	22.361	1'39.621	<b>196,7</b>	17:38'50.891

**41 J. RIED (1'36.459)**

Lap	Seg.1	Seg.2	Seg.3	Seg.4	Lap Time	km/h	Local Time
1		26.488	28.940	21.804		188,5	17:13'13.184
2	24.606	24.563	28.165	21.552	1'38.886	191,5	17:14'52.070
3	24.294	24.360	27.717	21.993	1'38.364	195,3	17:16'30.434
4	24.601	24.241	27.654	21.302	1'37.798	195,7	17:18'08.232
5	24.147	24.249	27.560	21.297	1'37.253	195,7	17:19'45.485
6	24.257	24.229	38.809	21.296	1'48.591	106,5	17:21'34.076
7	24.096	24.222	27.615	21.356	1'37.289	195,7	17:23'11.365
8	24.032	24.116	27.391	21.400	1'36.939	195,3	17:24'48.304
9	24.075	24.115	27.450	21.273	1'36.913	195,3	17:26'25.217
10	24.085	24.128	27.652	35.925	1'51.790P	195,3	17:28'17.007
11	7'34.344	26.871	29.557	22.501	8'53.273P	192,5	17:37'10.280
12	26.728	24.681	31.215	21.203	1'43.827	195,3	17:38'54.107
13	24.060	24.118	27.571	21.251	1'37.000C	195,3	17:40'31.107
14	23.936	24.097	27.499	21.066	1'36.598	195,7	17:42'07.705
15	<b>23.880</b>	24.132	27.546	37.614	1'53.172	<b>196,4</b>	17:44'00.877
16	30.479	25.168	27.500	21.015	1'44.162	195,3	17:45'45.039
17	24.034	24.106	<b>27.342</b>	<b>20.977</b>	<b>1'36.459</b>	195,3	17:47'21.498
18	24.003	24.405	27.443	21.049	1'36.900	194,6	17:48'58.398
19	23.951	<b>24.085</b>	27.496	21.115	1'36.647	194,6	17:50'35.045

**52 M. AMAND (1'36.060)**

Lap	Seg.1	Seg.2	Seg.3	Seg.4	Lap Time	km/h	Local Time
1		25.720	29.193	39.248		183,1	17:12'18.717
2	59.477	24.515	28.054	21.467	2'13.513P	192,9	17:14'32.230
3	25.041	24.418	27.776	21.252	1'38.487	197,1	17:16'10.717
4	23.898	24.191	27.634	21.257	1'36.980	195,7	17:17'47.697
5	23.899	24.126	27.483	21.145	1'36.653	194,9	17:19'24.350
6	23.881	24.116	27.427	21.075	1'36.499	195,7	17:21'00.849
7	23.760	24.054	27.368	21.146	1'36.328	<b>200,7</b>	17:22'37.177
8	23.826	24.088	<b>27.322</b>	21.142	1'36.378	198,5	17:24'13.555
9	23.858	24.128	27.396	21.191	1'36.573	200,0	17:25'50.128
10	23.918	24.114	27.369	21.427	1'36.828	200,0	17:27'26.956
11	23.830	24.231	27.495	21.067	1'36.623	198,2	17:29'03.579
12	23.801	24.133	27.446	21.084	1'36.464	195,3	17:30'40.043
13	23.897	24.046	27.457	21.156	1'36.556	197,4	17:32'16.599
14	23.875	24.103	27.571	21.244	1'36.793	197,4	17:33'53.392
15	25.349	24.684	27.884	32.377	1'50.294P	196,7	17:35'43.686
16	5'48.231	28.492	28.483	21.415	7'06.621P	189,1	17:42'50.307
17	24.518	33.533	39.148	21.683	1'58.882	165,9	17:44'49.189
18	23.677	23.996	27.710	<b>20.947</b>	1'36.330	196,0	17:46'25.519
19	24.277	26.040	31.582	23.153	1'45.052	185,9	17:48'10.571
20	23.779	<b>23.981</b>	27.327	20.973	<b>1'36.060</b>	194,9	17:49'46.631
21	<b>23.664</b>	23.999	27.474	21.097	1'36.234	196,4	17:51'22.865

**61 G. MASCHIO (1'38.201)**

Lap	Seg.1	Seg.2	Seg.3	Seg.4	Lap Time	km/h	Local Time
1		28.419	32.292	22.885		187,5	17:12'36.353
2	25.704	25.144	28.592	22.164	1'41.604	192,9	17:14'17.957
3	25.228	24.648	28.314	21.887	1'40.077	195,7	17:15'58.034
4	24.975	24.605	28.039	21.668	1'39.287	194,2	17:17'37.321
5	24.726	24.396	28.066	3'52.169	5'09.357P	194,9	17:22'46.678
6	49.365	32.200	29.838	23.202	2'14.605P	193,2	17:25'01.283
7	25.854	26.327	28.155	21.816	1'42.152	195,3	17:26'43.435
8	24.623	24.513	37.273	22.143	1'48.552	194,2	17:28'31.987
9	24.521	24.454		1'40.517C	194,2	17:30'12.504	
10	24.438	24.539	27.980	21.569	1'38.526	193,2	17:31'51.030
11	<b>24.340</b>	24.490	27.937	21.535	1'38.302	194,2	17:33'29.332
12	24.351	24.467	27.854	21.529	<b>1'38.201</b>	194,9	17:35'07.533
13	24.512	24.712	30.833	25.539	1'45.596	161,4	17:36'53.129
14	24.633	24.439	<b>27.655</b>	3'16.484	4'33.211P	194,9	17:41'26.340
15	57.431	25.489	28.242	31.217	2'22.379P	<b>196,0</b>	17:43'48.719
16	35.772	<b>24.353</b>	28.133	21.661	1'49.919	193,9	17:45'38.638
17	24.603	25.561	28.366	21.630	1'40.160C	193,5	17:47'18.798
18	24.393	24.437	28.133	<b>21.413</b>	1'38.376	193,9	17:48'57.174
19	26.383	26.274	34.798	23.010	1'50.465	194,6	17:50'47.639

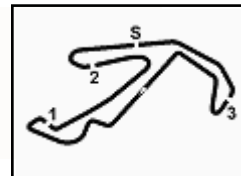
**71 M. FLACK (1'36.398)**

Lap	Seg.1	Seg.2	Seg.3	Seg.4	Lap Time	km/h	Local Time
1		26.610	30.174	22.597		185,6	17:12'16.340
2	26.101	25.042	28.494	21.804	1'41.441	191,2	17:13'57.781

03/06/2022

P = Pits In/Out - C = Lap Time Cancelled

Powered by FICr PERUGIA TIMING



# ACI Racing Weekend Misano, 4-5 Giugno 2022

## Italian F4 Championship - Chronological Analysis Free Practice 2

Misano Circuit Sic 58 4.226 m

**6 / 7**

3	24.905	24.699	28.075	21.498	1'39.177	193,5	17:15'36.958	21	24.148	24.170	27.574	21.237	1'37.129	196,4	17:48'28.883
4	24.379	24.288	27.858	21.657	1'38.182	195,7	17:17'15.140	22	24.253	24.225	28.227	21.377	1'38.082	195,3	17:50'06.965
5	27.888	26.088	28.131	21.662	1'43.769	195,3	17:18'58.909	<b>83 M. WEUG (1'36.287)</b>							
6	24.159	24.157	27.485	21.364	1'37.165	196,4	17:20'36.074	Lap	Seg.1	Seg.2	Seg.3	Seg.4	Lap Time	km/h	Local Time
7	24.038	24.269	27.377	21.257	1'36.941C	195,7	17:22'13.015	1							17:11'10.856
8	24.071	24.211	27.434	21.351	1'37.067	196,0	17:23'50.082	2	46.840	27.104	29.856	23.425	2'07.225P	186,9	17:13'18.081
9	24.115	24.211	27.475	4'39.801	5'55.602P	<b>197,1</b>	17:29'45.684	3	25.942	25.541	28.869	21.842	1'42.194	191,5	17:15'00.275
10	41.836	26.247	29.848	22.400	2'00.331P	192,9	17:31'46.015	4	24.424	24.406	27.903	21.406	1'38.139	193,9	17:16'38.414
11	25.523	24.838	28.459	21.732	1'40.552	187,5	17:33'26.567	5	24.108	24.224	27.736	21.318	1'37.386	194,6	17:18'15.800
12	24.286	24.163	27.704	21.243	1'37.396C	194,9	17:35'03.963	6	23.934	24.180	27.525	21.150	1'36.789	194,9	17:19'52.589
13	24.011	<b>24.038</b>	28.199	21.843	1'38.091	<b>197,1</b>	17:36'42.054	7	23.880	24.136	27.604	21.221	1'36.841	194,6	17:21'29.430
14	24.402	24.055	27.431	21.115	1'37.003	194,9	17:38'19.057	8	23.811	24.109	27.550	21.206	1'36.676	195,3	17:23'06.106
15	24.035	24.075	<b>27.370</b>	21.079	1'36.559	195,7	17:39'55.616	9	<b>23.809</b>	24.104	27.396	21.199	1'36.508	195,3	17:24'42.614
16	23.970	24.111	27.442	21.167	1'36.690	195,7	17:41'32.306	10	26.921	25.045	32.382	23.288	1'47.636	162,7	17:26'30.250
17	25.627	27.621	27.851	21.419	1'42.518	196,7	17:43'14.824	11	24.103	24.187	27.537	21.271	1'37.098	194,6	17:28'07.348
18	27.272	38.785	27.530	21.077	1'54.664	196,4	17:45'09.488	12	23.842	24.105	27.597	20.993	1'36.537	194,6	17:29'43.885
19	<b>23.909</b>	24.087	27.381	<b>21.021</b>	<b>1'36.398</b>	196,4	17:46'45.886	13	23.854	24.134	27.987	5'38.993	6'54.968P	193,9	17:36'38.853
20	24.156	24.138	27.452	1'56.480	3'12.226P	196,7	17:49'58.112	14	43.912	25.801	29.078	22.289	2'01.080P	189,8	17:38'39.933

**77 T. BARNARD (1'36.528)**

Lap	Seg.1	Seg.2	Seg.3	Seg.4	Lap Time	km/h	Local Time
1		28.771	32.386	23.482		162,7	17:12'35.958
2	27.475	26.284	30.250	24.383	1'48.392	186,9	17:14'24.350
3	27.020	25.031	29.035	34.853	1'55.939P	190,8	17:16'20.289
4	4'59.194	26.431	32.788	22.704	6'21.117P	157,9	17:22'41.406
5	26.055	25.331	29.106	22.827	1'43.319	190,8	17:24'24.725
6	25.575	25.066	29.539	21.239	1'41.419	169,3	17:26'06.144
7	23.987	24.125	27.685	21.076	1'36.873	193,2	17:27'43.017
8	24.170	24.361	27.684	32.494	1'48.709P	192,5	17:29'31.726
9	2'50.629	31.304	33.127	25.644	4'20.704P	181,8	17:33'52.430
10	33.824	26.478	28.518	21.226	1'50.046	191,2	17:35'42.476
11	23.977	24.221	<b>27.331</b>	21.259	1'36.788	<b>195,7</b>	17:37'19.264
12	23.935	24.092	27.537	22.972	1'38.536	194,9	17:38'57.800
13	23.974	<b>24.070</b>	27.512	21.106	1'36.662	194,9	17:40'34.462
14	24.700	28.689	33.823	<b>21.019</b>	1'48.231	131,7	17:42'22.693
15	<b>23.884</b>	24.082	35.943	30.507	1'54.416	194,9	17:44'17.109
16	23.915	24.241	27.734	26.713	1'42.603	193,5	17:45'59.712
17	23.931	24.092	27.424	21.081	<b>1'36.528</b>	194,2	17:47'36.240
18	25.609	30.281	32.459	21.467	1'49.816	143,2	17:49'26.056
19	23.899	24.142	27.458	21.148	1'36.647	193,9	17:51'02.703

**88 R. CAMARA (1'35.258)**

Lap	Seg.1	Seg.2	Seg.3	Seg.4	Lap Time	km/h	Local Time
1		26.768	29.644	48.097		182,1	17:12'37.358
2	1'36.958	25.105	29.258	21.483	2'52.804P	180,3	17:15'30.162
3	24.460	24.348	27.714	21.263	1'37.785	195,3	17:17'07.947
4	23.921	24.037	27.436	21.037	1'36.431	196,0	17:18'44.378
5	23.844	24.135	27.529	21.029	1'36.537	197,4	17:20'20.915
6	23.879	23.957	27.331	20.903	1'36.070	196,7	17:21'56.985
7	28.940	25.846	27.903	20.965	1'43.654	197,1	17:23'40.639
8	23.811	23.881	27.154	21.023	1'35.869	196,7	17:25'16.508
9	24.000	24.125	27.599	36.650	1'52.374P	198,2	17:27'08.882
10	7'59.291	36.460	34.292	22.472	9'32.515P	164,1	17:48'41.397
11	26.055	24.717	28.033	21.066	1'39.871	192,9	17:38'21.268
12	23.967	23.919	27.290	20.761	1'35.937	198,2	17:39'57.205
13	23.758	23.841	27.144	20.784	1'35.527	198,2	17:41'32.732
14	24.829	27.463	27.677	20.814	1'40.783	195,3	17:43'13.515
15	28.102	37.820	27.729	20.859	1'54.510	191,8	17:45'08.025
16	23.643	23.842	27.114	<b>20.699</b>	1'35.298	199,3	17:46'43.323
17	23.679	<b>23.829</b>	<b>26.988</b>	20.762	<b>1'35.258</b>	<b>199,6</b>	17:48'18.581

**78 V. BLOKINA (1'36.978)**

Lap	Seg.1	Seg.2	Seg.3	Seg.4	Lap Time	km/h	Local Time
1		28.073	29.986	42.175		183,4	17:13'06.921
2	1'53.758	27.093	29.190	37.391	3'27.432P	190,5	17:16'34.353
3	55.682	26.434	29.106	23.043	2'14.265P	190,1	17:18'48.618
4	25.436	25.102	28.536	22.161	1'41.235C	192,9	17:20'29.853
5	24.531	24.657	27.788	21.559	1'38.535	194,6	17:22'08.388
6	24.383	24.587	27.947	21.488	1'38.405	193,5	17:23'46.793
7	24.350	24.281	27.874	21.295	1'37.800	193,9	17:25'24.593
8	24.152	24.381	27.720	21.306	1'37.559	195,3	17:27'02.152
9	24.247	24.207	27.581	21.158	1'37.193	195,3	17:28'39.345
10	24.198	24.336	27.704	21.188	1'37.426	194,6	17:30'16.771
11	<b>24.088</b>	24.243	27.663	21.176	1'37.170	195,3	17:31'53.941
12	24.122	24.155	27.715	<b>21.144</b>	1'37.136	195,3	17:33'31.077
13	24.179	24.165	27.830	21.389	1'37.563	195,3	17:35'08.640
14	24.249	24.255	27.868	21.828	1'38.200	196,0	17:36'46.840
15	26.285	25.044	28.078	21.626	1'41.033	194,9	17:38'27.873
16	24.508	25.001	27.860	21.409	1'38.778	194,6	17:40'06.651
17	24.269	24.189	27.587	21.238	1'37.283	196,0	17:41'43.934
18	24.130	<b>24.137</b>	27.534	21.177	<b>1'36.978</b>	194,9	17:43'20.912
19	26.946	36.913	27.901	21.640	1'53.400	<b>196,7</b>	17:45'14.312
20	24.269	24.212	<b>27.418</b>	21.543	1'37.442	<b>196,7</b>	17:46'51.754

**89 I. DOMINGUES (1'36.168)**

Lap	Seg.1	Seg.2	Seg.3	Seg.4	Lap Time	km/h	Local Time
1		26.301	29.606	49.782		186,2	17:12'46.554
2	1'33.434	25.434	28.943	21.718	2'49.529P	187,2	17:15'36.083
3	24.463	24.456	28.008	21.436	1'38.363	194,2	17:17'14.446
4	24.456	24.275	27.628	21.252	1'37.611	195,3	17:18'52.057
5	24.117	24.075	27.592	21.273	1'37.057	<b>197,4</b>	17:20'29.114
6	24.062	24.114	27.519	21.113	1'36.808	195,7	17:22'05.922
7	23.955	24.062	27.720	21.970	1'37.707	197,1	17:23'43.629
8	23.982	24.278	29.413	21.925	1'39.598	192,2	17:25'23.227
9	24.007	24.066	27.582	21.179	1'36.834	195,3	17:27'00.061
10	24.102	24.163	27.815	6'13.756	7'29.836P	195,3	17:34'29.897
11	44.255	32.633	35.111	25.621	2'17.620P	140,1	17:36'47.517
12	27.952	28.801	31.662	21.828	1'50.243	174,8	17:38'37.760
13	23.998	24.079	28.233	21.121	1'37.431	190,8	17:40'15.191
14	<b>23.811</b>	<b>23.971</b>	<b>27.440</b>	<b>20.946</b>	<b>1'36.168</b>	194,9	17:41'51.359

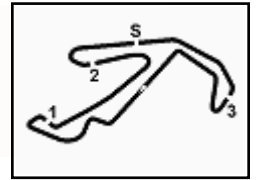
03/06/2022

P = Pits In/Out - C = Lap Time Cancelled





2.5



# ACI Racing Weekend Misano, 4-5 Giugno 2022 Italian F4 Championship - Chronological Analysis Free Practice 2

Misano Circuit Sic 58 4.226 m

7 / 7

15	1'42.996	32.348	35.135	4'50.852	7'41.331P	165,1	17:49'32.690
16	43.702	24.826	28.243	21.238	1'58.009P	191,5	17:51'30.699

### 96 J. CASTRO (1'36.568)

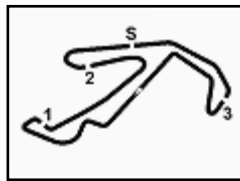
Lap	Seg.1	Seg.2	Seg.3	Seg.4	Lap Time	km/h	Local Time
1		26.870	29.325	23.007		183,7	17:12'04.496
2	24.938	25.267	29.553	41.097	2'00.855P	190,1	17:14'05.351
3	1'22.842	25.269	28.021	21.561	2'37.693P	194,9	17:16'43.044
4	24.259	24.393	27.730	21.324	1'37.706	194,6	17:18'20.750
5	24.069	24.215	27.520	21.285	1'37.089	194,9	17:19'57.839
6	24.018	24.251	27.718	21.234	1'37.221	193,9	17:21'35.060
7	24.030	24.288	27.552	21.230	1'37.100	194,9	17:23'12.160
8	24.003	24.166	27.616	21.195	1'36.980	195,7	17:24'49.140
9	24.052	24.139	27.595	21.292	1'37.078	<b>196,4</b>	17:26'26.218
10	24.084	24.213	27.612	21.773	1'37.682	195,7	17:28'03.900
11	25.500	24.985	32.929	38.176	2'01.590P	151,0	17:30'05.490
12	4'49.833	30.674	30.307	24.332	6'15.146P	189,5	17:36'20.636
13	28.150	25.456	29.348	21.431	1'44.385	185,9	17:38'05.021
14	24.059	24.129	27.679	21.079	1'36.946	194,6	17:39'41.967
15	24.327	24.112	27.618	<b>21.012</b>	1'37.069	194,2	17:41'19.036
16	24.110	24.113	<b>27.512</b>	21.065	1'36.800	195,3	17:42'55.836
17	23.917	39.587	35.211	21.243	1'59.958	178,5	17:44'55.794
18	<b>23.916</b>	<b>24.063</b>	27.528	21.061	<b>1'36.568</b>	195,3	17:46'32.362
19	23.972	24.108	27.694	23.161	1'38.935C	194,9	17:48'11.297
20	24.021	24.134	27.526	21.156	1'36.837	195,3	17:49'48.134

03/06/2022

P = Pits In/Out - C = Lap Time Cancelled

Powered by FICr PERUGIA TIMING

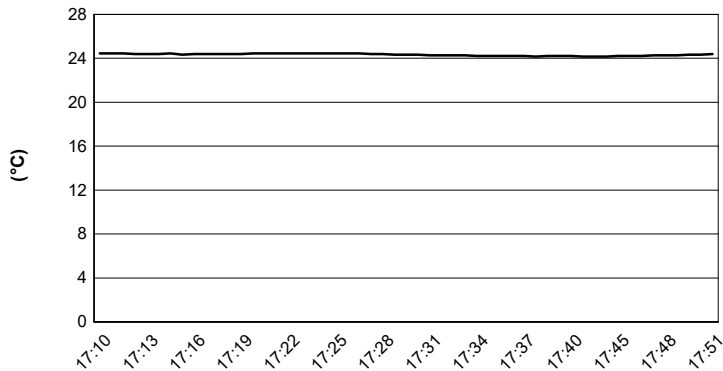




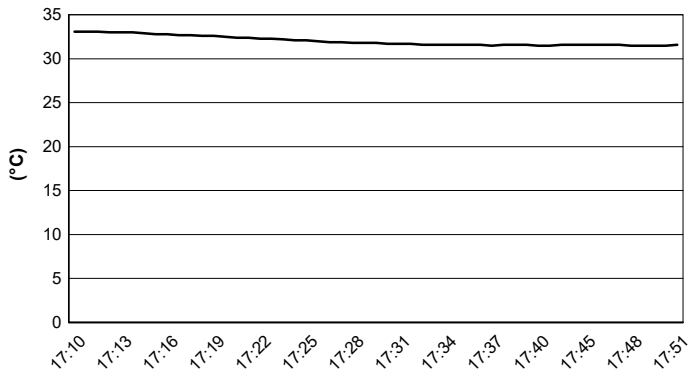
**ACI Racing Weekend Misano, 4-5 Giugno 2022**  
**Italian F4 Championship - Weather Report Free Practice 2**  
Session started 17:10 - Session ended 17:51

Misano Circuit Sic 58 4.226 m

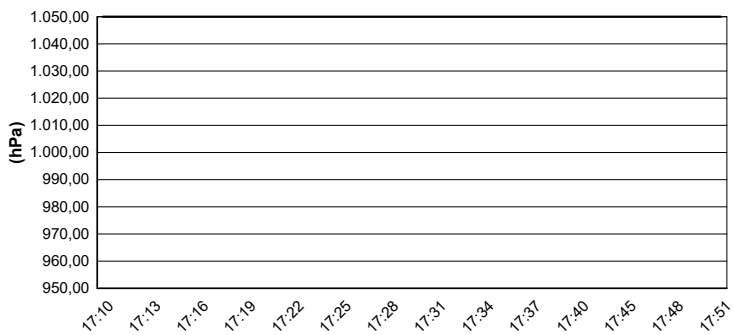
**Air Temperature**



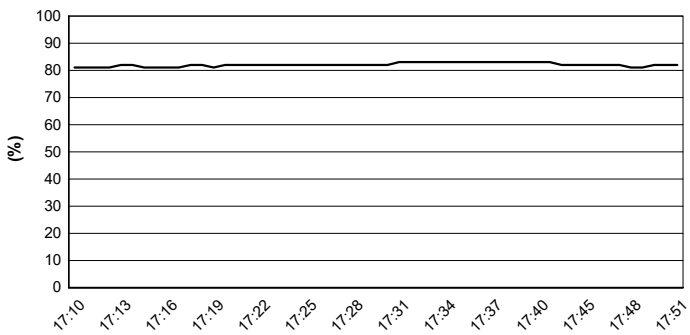
**Track Temperature**



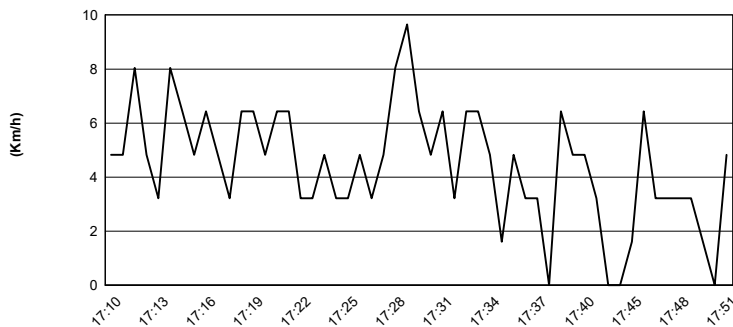
**Air Pressure**



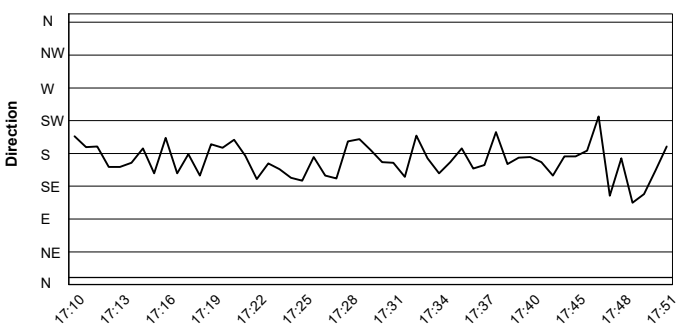
**Humidity**



**Wind Speed**



**Wind Direction**



03/06/2022

