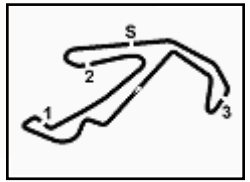




3.1



ACI Racing Weekend Misano, 4-5 Giugno 2022

Italian F4 Championship - Result Qualifying 1

Misano Circuit Sic 58 4.226 m

1 / 2

No.	Driver	Nat	Entrant	Team	Car	Class	Time	Gap	Rel.	Laps
1	12 ANTONELLI Kimi Andrea	ITA	Prema Racing	Prema Racing	Tatuus F.4 T421	R	1'35.052			8
2	88 CAMARA Rafael	BRA	Prema Racing	Prema Racing	Tatuus F.4 T421	R	1'35.318	0.266	0.266	8
3	13 WHARTON James Anthony	AUS	Prema Racing	Prema Racing	Tatuus F.4 T421	R	1'35.515	0.463	0.197	8
4	22 DUNNE Alexander	IRL	US Racing	US Racing	Tatuus F.4 T421		1'35.524	0.472	0.009	7
5	7 WURZ Charlie	AUT	Prema Racing	Prema Racing	Tatuus F.4 T421	R	1'35.610	0.558	0.086	8
6	52 AMAND Marcus	FRA	US Racing	US Racing	Tatuus F.4 T421		1'35.612	0.560	0.002	5
7	20 LAURSEN Conrad	DEN	Prema Racing	Prema Racing	Tatuus F.4 T421		1'35.703	0.651	0.091	8
8	37 SZTUKA Kacper	POL	US Racing	US Racing	Tatuus F.4 T421		1'35.781	0.729	0.078	8
9	83 WEUG Maya	NLD	Iron Dames	Iron Dames	Tatuus F.4 T421		1'35.790	0.738	0.009	9
10	15 BEDRIN Nikita		PHM Racing	PHM Racing	Tatuus F.4 T421		1'35.900	0.848	0.110	8
11	34 STENSHORNE Martinus	NOR	Van Amersfoort Racing	Van Amersfoort Racing	Tatuus F.4 T421	R	1'35.931	0.879	0.031	8
12	77 BARNARD Taylor	GBR	PHM Racing	PHM Racing	Tatuus F.4 T421		1'36.112	1.060	0.181	8
13	89 DOMINGUES Ivan Franco	POR	Iron Lynx	Iron Lynx	Tatuus F.4 T421	R	1'36.127	1.075	0.015	8
14	17 FITTIPALDI Emerson Jr.	BRA	Van Amersfoort Racing	Van Amersfoort Racing	Tatuus F.4 T421	R	1'36.249	1.197	0.122	8
15	44 BOHRA Nikhil	USA	US Racing	US Racing	Tatuus F.4 T421	R	1'36.262	1.210	0.013	7
16	2 DEUKMEDJAN Arias	USA	Van Amersfoort Racing	Van Amersfoort Racing	Tatuus F.4 T421	R	1'36.324	1.272	0.062	8
17	9 SPINA Alfio Andrea	ITA	BWR Motorsport	BWR Motorsport	Tatuus F.4 T421	R	1'36.337	1.285	0.013	9
18	71 FLACK Marcos	AUS	R-ACE GP	R-ACE GP	Tatuus F.4 T421		1'36.343	1.291	0.006	9
19	41 RIED Jonas	DEU	PHM Racing	PHM Racing	Tatuus F.4 T421		1'36.403	1.351	0.060	8
20	33 BADOER Brando	ITA	Van Amersfoort Racing	Van Amersfoort Racing	Tatuus F.4 T421	R	1'36.417	1.365	0.014	9
21	35 CLEROT Pedro	BRA	AKM Motorsport	AKM Motorsport	Tatuus F.4 T421	R	1'36.499	1.447	0.082	8
22	96 CASTRO Jules	BEL	Van Amersfoort Racing	Van Amersfoort Racing	Tatuus F.4 T421	R	1'36.593	1.541	0.094	8
23	11 PERINO Pedro	MOZ	US Racing	US Racing	Tatuus F.4 T421		1'36.652	1.600	0.059	7
24	28 KLUSS Valentin	DEU	Jenzer Motorsport	Jenzer Motorsport	Tatuus F.4 T421	R	1'36.674	1.622	0.022	9
25	78 BLOKINA Viktoria		PHM Racing	PHM Racing	Tatuus F.4 T421	R	1'36.894	1.842	0.220	8
26	14 LUND Frederik	DEN	R-ACE GP	R-ACE GP	Tatuus F.4 T421	R	1'36.932	1.880	0.038	9
27	19 KARLSSON William	SWE	BVM Racing	BVM Racing	Tatuus F.4 T421	R	1'37.078	2.026	0.146	9
28	48 SPERANDIO Elia	CHE	Maffi Racing	Maffi Racing	Tatuus F.4 T421	R	1'37.183	2.131	0.105	8
29	21 FRASSINETI Andrea	ITA	Frassinetti Albano	Cars Racing	Tatuus F.4 T421	R	1'37.353	2.301	0.170	9
30	27 ISCHER Ethan	CHE	Jenzer Motorsport	Jenzer Motorsport	Tatuus F.4 T421	R	1'37.376	2.324	0.023	9
31	62 QUONDAMCARLO Manuel	ITA	AS Motorsport	AS Motorsport	Tatuus F.4 T421		1'37.569	2.517	0.193	9
32	23 PARTYSHEV Oleksandr	UKR	Jenzer Motorsport	Jenzer Motorsport	Tatuus F.4 T421		1'37.632	2.580	0.063	9
33	18 HWARANG Kim	KOR	BVM Racing	BVM Racing	Tatuus F.4 T421	R	1'37.668	2.616	0.036	8
34	29 RISHAB Anandraj Jain	SGP	BWR Motorsport	BWR Motorsport	Tatuus F.4 T421	R	1'38.048	2.996	0.380	8
35	61 MASCHIO Giovanni	ITA	AS Motorsport	AS Motorsport	Tatuus F.4 T421	R	1'38.113	3.061	0.065	9
36	36 AKHMED Ismail	UZB	AKM Motorsport	AKM Motorsport	Tatuus F.4 T421	R	1'38.691	3.639	0.578	8

Qualifying Lap Time (110% of 1'35.295): 1'44.825

Humidity:	79%	Air	24°C
Condition:	DRY	Track	26°C

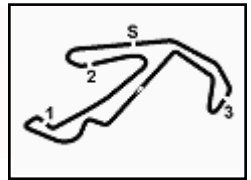
Clerk of the Course : Fabrizio Fondacci

Race Director : Alessandro Ferrari

Start	End
04/06/2022 09:35	09:52

Powered by FICr PERUGIA TIMING




ACI Racing Weekend Misano, 4-5 Giugno 2022
Italian F4 Championship - Result Qualifying 1

Misano Circuit Sic 58 4.226 m

2 / 2

Penalty and Infringement
Fastest Laps Sequence

No.	Entrant	Nat	Team	Car	Local Time	Time	Gap	Avg
7	C. WURZ	AUT	Prema Racing	Tatuus F.4 T421	09:38'50.167	1'44.208		145,993
12	K. ANTONELLI	ITA	Prema Racing	Tatuus F.4 T421	09:38'56.670	1'41.922	-2.286	149,267
88	R. CAMARA	BRA	Prema Racing	Tatuus F.4 T421	09:39'01.483	1'41.576	-0.346	149,776
71	M. FLACK	AUS	R-ACE GP	Tatuus F.4 T421	09:39'15.707	1'41.426	-0.150	149,997
61	G. MASCHIO	ITA	AS Motorsport	Tatuus F.4 T421	09:39'27.250	1'41.386	-0.040	150,056
78	V. BLOKINA		PHM Racing	Tatuus F.4 T421	09:39'29.075	1'40.672	-0.714	151,120
41	J. RIED	DEU	PHM Racing	Tatuus F.4 T421	09:39'55.828	1'39.751	-0.921	152,516
7	C. WURZ	AUT	Prema Racing	Tatuus F.4 T421	09:40'27.169	1'37.002	-2.749	156,838
13	J. WHARTON	AUS	Prema Racing	Tatuus F.4 T421	09:40'35.305	1'36.567	-0.435	157,545
34	M. STENSHORNE	NOR	Van Amersfoort Racing	Tatuus F.4 T421	09:40'39.603	1'36.551	-0.016	157,571
37	K. SZTUKA	POL	US Racing	Tatuus F.4 T421	09:41'50.136	1'36.391	-0.160	157,832
7	C. WURZ	AUT	Prema Racing	Tatuus F.4 T421	09:42'03.415	1'36.246	-0.145	158,070
22	A. DUNNE	IRL	US Racing	Tatuus F.4 T421	09:42'06.790	1'36.099	-0.147	158,312
12	K. ANTONELLI	ITA	Prema Racing	Tatuus F.4 T421	09:42'10.582	1'35.558	-0.541	159,208
12	K. ANTONELLI	ITA	Prema Racing	Tatuus F.4 T421	09:43'45.802	1'35.220	-0.338	159,773
12	K. ANTONELLI	ITA	Prema Racing	Tatuus F.4 T421	09:47'00.781	1'35.104	-0.116	159,968
12	K. ANTONELLI	ITA	Prema Racing	Tatuus F.4 T421	09:50'18.644	1'35.052	-0.052	160,056

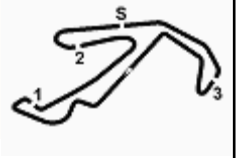
Clerk of the Course : Fabrizio Fondacci

Race Director : Alessandro Ferrari

	Start	End
04/06/2022	09:35	09:52

Powered by FICr PERUGIA TIMING





ACI Racing Weekend Misano, 4-5 Giugno 2022

Italian F4 Championship - Best Sectors & Speed Qualifying 1

Misano Circuit Sic 58 4.226 m

BEST LAP

1	12 ANTONELLI Kimi Andrea	Tatuus F.4 T421	1'35.052
2	88 CAMARA Rafael	Tatuus F.4 T421	1'35.318
3	13 WHARTON James Anthony	Tatuus F.4 T421	1'35.515
4	22 DUNNE Alexander	Tatuus F.4 T421	1'35.524
5	7 WURZ Charlie	Tatuus F.4 T421	1'35.610
6	52 AMAND Marcus	Tatuus F.4 T421	1'35.612
7	20 LAURSEN Conrad	Tatuus F.4 T421	1'35.703
8	37 SZTUKA Kacper	Tatuus F.4 T421	1'35.781
9	83 WEUG Maya	Tatuus F.4 T421	1'35.790
10	15 BEDRIN Nikita	Tatuus F.4 T421	1'35.900
11	34 STENSHORNE Martinus	Tatuus F.4 T421	1'35.931
12	77 BARNARD Taylor	Tatuus F.4 T421	1'36.112
13	89 DOMINGUES Ivan Franco	Tatuus F.4 T421	1'36.127
14	17 FITTIPALDI Emerson Jr.	Tatuus F.4 T421	1'36.249
15	44 BOHRA Nikhil	Tatuus F.4 T421	1'36.262
16	2 DEUKMEDJAN Arias	Tatuus F.4 T421	1'36.324
17	9 SPINA Alfio Andrea	Tatuus F.4 T421	1'36.337
18	71 FLACK Marcos	Tatuus F.4 T421	1'36.343
19	41 RIED Jonas	Tatuus F.4 T421	1'36.403
20	33 BADOER Brando	Tatuus F.4 T421	1'36.417
21	35 CLEROT Pedro	Tatuus F.4 T421	1'36.499
22	96 CASTRO Jules	Tatuus F.4 T421	1'36.593
23	11 PERINO Pedro	Tatuus F.4 T421	1'36.652
24	28 KLUSS Valentin	Tatuus F.4 T421	1'36.674
25	78 BLOKINA Viktoria	Tatuus F.4 T421	1'36.894
26	14 LUND Frederik	Tatuus F.4 T421	1'36.932
27	19 KARLSSON William	Tatuus F.4 T421	1'37.078
28	48 SPERANDIO Elia	Tatuus F.4 T421	1'37.183
29	21 FRASSINETI Andrea	Tatuus F.4 T421	1'37.353
30	27 ISCHER Ethan	Tatuus F.4 T421	1'37.376
31	62 QUONDAMCARLO Manuel	Tatuus F.4 T421	1'37.569
32	23 PARTY SHEV Oleksandr	Tatuus F.4 T421	1'37.632
33	18 HWARANG Kim	Tatuus F.4 T421	1'37.668
34	29 RISHAB Anandraj Jain	Tatuus F.4 T421	1'38.048
35	61 MASCHIO Giovanni	Tatuus F.4 T421	1'38.113
36	36 AKHMED Ismail	Tatuus F.4 T421	1'38.691

SPEED

1	88 CAMARA Rafael	Tatuus F.4 T421	199,6
2	52 AMAND Marcus	Tatuus F.4 T421	199,3
3	18 HWARANG Kim	Tatuus F.4 T421	198,9
4	9 SPINA Alfio Andrea	Tatuus F.4 T421	198,5
5	15 BEDRIN Nikita	Tatuus F.4 T421	198,2
6	41 RIED Jonas	Tatuus F.4 T421	197,8
7	37 SZTUKA Kacper	Tatuus F.4 T421	197,4
8	13 WHARTON James Anthony	Tatuus F.4 T421	197,4
9	34 STENSHORNE Martinus	Tatuus F.4 T421	197,4
10	22 DUNNE Alexander	Tatuus F.4 T421	197,4
11	17 FITTIPALDI Emerson Jr.	Tatuus F.4 T421	197,1
12	77 BARNARD Taylor	Tatuus F.4 T421	197,1
13	19 KARLSSON William	Tatuus F.4 T421	197,1
14	44 BOHRA Nikhil	Tatuus F.4 T421	196,7
15	61 MASCHIO Giovanni	Tatuus F.4 T421	196,7
16	96 CASTRO Jules	Tatuus F.4 T421	196,7
17	71 FLACK Marcos	Tatuus F.4 T421	196,7
18	12 ANTONELLI Kimi Andrea	Tatuus F.4 T421	196,7
19	14 LUND Frederik	Tatuus F.4 T421	196,7
20	20 LAURSEN Conrad	Tatuus F.4 T421	196,4
21	48 SPERANDIO Elia	Tatuus F.4 T421	196,4
22	33 BADOER Brando	Tatuus F.4 T421	196,4
23	2 DEUKMEDJAN Arias	Tatuus F.4 T421	196,4
24	62 QUONDAMCARLO Manuel	Tatuus F.4 T421	196,4
25	78 BLOKINA Viktoria	Tatuus F.4 T421	196,4
26	29 RISHAB Anandraj Jain	Tatuus F.4 T421	196,4
27	89 DOMINGUES Ivan Franco	Tatuus F.4 T421	196,0
28	7 WURZ Charlie	Tatuus F.4 T421	196,0
29	83 WEUG Maya	Tatuus F.4 T421	196,0
30	27 ISCHER Ethan	Tatuus F.4 T421	195,7
31	36 AKHMED Ismail	Tatuus F.4 T421	195,7
32	21 FRASSINETI Andrea	Tatuus F.4 T421	195,7
33	28 KLUSS Valentin	Tatuus F.4 T421	195,7
34	11 PERINO Pedro	Tatuus F.4 T421	195,3
35	35 CLEROT Pedro	Tatuus F.4 T421	194,9
36	23 PARTY SHEV Oleksandr	Tatuus F.4 T421	194,2

SEG. 1

1	12 ANTONELLI Kimi Andrea	23.431
2	22 DUNNE Alexander	23.528
3	13 WHARTON James Anthon	23.558
4	52 AMAND Marcus	23.563
5	88 CAMARA Rafael	23.575
6	7 WURZ Charlie	23.592
7	37 SZTUKA Kacper	23.608
8	89 DOMINGUES Ivan Franco	23.645
9	20 LAURSEN Conrad	23.652
10	83 WEUG Maya	23.700
11	15 BEDRIN Nikita	23.719
12	34 STENSHORNE Martinus	23.719
13	44 BOHRA Nikhil	23.733
14	17 FITTIPALDI Emerson Jr.	23.736
15	77 BARNARD Taylor	23.776
16	33 BADOER Brando	23.785
17	71 FLACK Marcos	23.788
18	41 RIED Jonas	23.800
19	9 SPINA Alfio Andrea	23.819
20	96 CASTRO Jules	23.845
21	2 DEUKMEDJAN Arias	23.861
22	11 PERINO Pedro	23.869
23	21 FRASSINETI Andrea	23.914
24	28 KLUSS Valentin	23.921
25	14 LUND Frederik	23.924
26	35 CLEROT Pedro	23.941
27	19 KARLSSON William	23.985
28	48 SPERANDIO Elia	23.997
29	78 BLOKINA Viktoria	24.023
30	27 ISCHER Ethan	24.051
31	23 PARTY SHEV Oleksandr	24.159
32	18 HWARANG Kim	24.179
33	62 QUONDAMCARLO Man	24.193
34	61 MASCHIO Giovanni	24.379
35	29 RISHAB Anandraj Jain	24.390
36	36 AKHMED Ismail	24.438

SEG. 2

1	12 ANTONELLI Kimi Andrea	23.710
2	88 CAMARA Rafael	23.724
3	52 AMAND Marcus	23.828
4	7 WURZ Charlie	23.842
5	20 LAURSEN Conrad	23.850
6	22 DUNNE Alexander	23.860
7	13 WHARTON James Anthon	23.889
8	83 WEUG Maya	23.889
9	17 FITTIPALDI Emerson Jr.	23.892
10	37 SZTUKA Kacper	23.895
11	34 STENSHORNE Martinus	23.933
12	15 BEDRIN Nikita	23.943
13	71 FLACK Marcos	23.951
14	11 PERINO Pedro	23.969
15	9 SPINA Alfio Andrea	23.971
16	44 BOHRA Nikhil	23.979
17	89 DOMINGUES Ivan Franco	23.982
18	77 BARNARD Taylor	23.993
19	41 RIED Jonas	24.006
20	14 LUND Frederik	24.010
21	33 BADOER Brando	24.012
22	48 SPERANDIO Elia	24.029
23	2 DEUKMEDJAN Arias	24.030
24	78 BLOKINA Viktoria	24.059
25	35 CLEROT Pedro	24.067
26	96 CASTRO Jules	24.091
27	27 ISCHER Ethan	24.117
28	28 KLUSS Valentin	24.118
29	19 KARLSSON William	24.170
30	21 FRASSINETI Andrea	24.176
31	62 QUONDAMCARLO Man	24.203
32	29 RISHAB Anandraj Jain	24.216
33	61 MASCHIO Giovanni	24.237
34	18 HWARANG Kim	24.256
35	23 PARTY SHEV Oleksandr	24.258
36	36 AKHMED Ismail	24.303

SEG. 3

1	12 ANTONELLI Kimi Andrea	27.061
2	88 CAMARA Rafael	27.081
3	13 WHARTON James Anthon	27.109
4	15 BEDRIN Nikita	27.111
5	52 AMAND Marcus	27.123
6	7 WURZ Charlie	27.157
7	22 DUNNE Alexander	27.177
8	34 STENSHORNE Martinus	27.195
9	83 WEUG Maya	27.235
10	20 LAURSEN Conrad	27.248
11	77 BARNARD Taylor	27.251
12	33 BADOER Brando	27.284
13	9 SPINA Alfio Andrea	27.286
14	89 DOMINGUES Ivan Franco	27.310
15	37 SZTUKA Kacper	27.317
16	71 FLACK Marcos	27.332
17	35 CLEROT Pedro	27.335
18	41 RIED Jonas	27.341
19	44 BOHRA Nikhil	27.370
20	17 FITTIPALDI Emerson Jr.	27.383
21	11 PERINO Pedro	27.392
22	19 KARLSSON William	27.416
23	78 BLOKINA Viktoria	27.451
24	2 DEUKMEDJAN Arias	27.468
25	28 KLUSS Valentin	27.484
26	14 LUND Frederik	27.485
27	96 CASTRO Jules	27.487
28	18 HWARANG Kim	27.578
29	62 QUONDAMCARLO Man	27.588
30	27 ISCHER Ethan	27.624
31	48 SPERANDIO Elia	27.657
32	61 MASCHIO Giovanni	27.684
33	21 FRASSINETI Andrea	27.702
34	23 PARTY SHEV Oleksandr	27.793
35	29 RISHAB Anandraj Jain	27.796
36	36 AKHMED Ismail	27.935

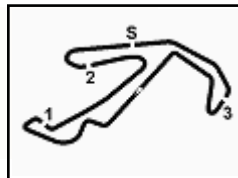
SEG. 4

1	88 CAMARA Rafael	20.732
2	12 ANTONELLI Kimi Andrea	20.787
3	13 WHARTON James Anthon	20.804
4	22 DUNNE Alexander	20.812
5	7 WURZ Charlie	20.816
6	20 LAURSEN Conrad	20.835
7	37 SZTUKA Kacper	20.909
8	83 WEUG Maya	20.941
9	2 DEUKMEDJAN Arias	20.953
10	52 AMAND Marcus	20.958
11	17 FITTIPALDI Emerson Jr.	20.982
12	34 STENSHORNE Martinus	20.992
13	44 BOHRA Nikhil	21.000
14	89 DOMINGUES Ivan Franco	21.026
15	77 BARNARD Taylor	21.041
16	15 BEDRIN Nikita	21.061
17	41 RIED Jonas	21.078
18	28 KLUSS Valentin	21.090
19	71 FLACK Marcos	21.116
20	11 PERINO Pedro	21.123
21	35 CLEROT Pedro	21.135
22	9 SPINA Alfio Andrea	21.151
23	96 CASTRO Jules	21.165
24	33 BADOER Brando	21.172
25	78 BLOKINA Viktoria	21.231
26	48 SPERANDIO Elia	21.269
27	19 KARLSSON William	21.278
28	14 LUND Frederik	21.288
29	23 PARTY SHEV Oleksandr	21.306
30	18 HWARANG Kim	21.389
31	27 ISCHER Ethan	21.398
32	29 RISHAB Anandraj Jain	21.419
33	62 QUONDAMCARLO Man	21.461
34	21 FRASSINETI Andrea	21.490
35	61 MASCHIO Giovanni	21.533
36	36 AKHMED Ismail	21.628

04/06/2022

Powered by FICr PERUGIA TIMING





ACI Racing Weekend Misano, 4-5 Giugno 2022

Italian F4 Championship - Ideal Time Qualifying 1

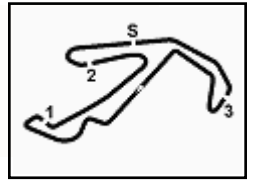
 Misano Circuit Sic 58 4.226 m
1 / 2

No. Driver	Car	Seg. 1 Diff. 1	Seg. 2 Diff. 2	Seg. 3 Diff. 3	Seg. 4 Diff. 4	Ideal Time		
						Best Lap	Pos.	Diff.
1 12 ANTONELLI K. (ITA)	Tatuus F.4 T421	23.431 +0.040	23.710	27.061 +0.020	20.787 +0.003	1'34.989 1'35.052	1	0.063
2 88 CAMARA R. (BRA)	Tatuus F.4 T421	23.575	23.724 +0.054	27.081 +0.152	20.732	1'35.112 1'35.318	2	0.206
3 13 WHARTON J. (AUS)	Tatuus F.4 T421	23.558	23.889 +0.106	27.109	20.804 +0.049	1'35.360 1'35.515	3	0.155
4 22 DUNNE A. (IRL)	Tatuus F.4 T421	23.528 +0.031	23.860	27.177	20.812 +0.116	1'35.377 1'35.524	4	0.147
5 7 WURZ C. (AUT)	Tatuus F.4 T421	23.592	23.842 +0.031	27.157	20.816 +0.172	1'35.407 1'35.610	5	0.203
6 52 AMAND M. (FRA)	Tatuus F.4 T421	23.563	23.828	27.123	20.958 +0.140	1'35.472 1'35.612	6	0.140
7 20 LAURSEN C. (DEN)	Tatuus F.4 T421	23.652 +0.007	23.850 +0.015	27.248	20.835 +0.096	1'35.585 1'35.703	7	0.118
8 37 SZTUKA K. (POL)	Tatuus F.4 T421	23.608 +0.010	23.895 +0.042	27.317	20.909	1'35.729 1'35.781	8	0.052
9 83 WEUG M. (NLD)	Tatuus F.4 T421	23.700	23.889	27.235	20.941 +0.025	1'35.765 1'35.790	9	0.025
10 15 BEDRIN N.	Tatuus F.4 T421	23.719	23.943 +0.014	27.111 +0.052	21.061	1'35.834 1'35.900	10	0.066
11 34 STENSHORNE M. (NOR)	Tatuus F.4 T421	23.719	23.933 +0.005	27.195	20.992 +0.087	1'35.839 1'35.931	11	0.092
12 89 DOMINGUES I. (POR)	Tatuus F.4 T421	23.645	23.982 +0.050	27.310	21.026 +0.114	1'35.963 1'36.127	13	0.164
13 17 FITTIPALDI E. (BRA)	Tatuus F.4 T421	23.736 +0.086	23.892 +0.061	27.383	20.982 +0.109	1'35.993 1'36.249	14	0.256
14 77 BARNARD T. (GBR)	Tatuus F.4 T421	23.776 +0.026	23.993	27.251 +0.025	21.041	1'36.061 1'36.112	12	0.051
15 44 BOHRA N. (USA)	Tatuus F.4 T421	23.733 +0.061	23.979 +0.119	27.370	21.000	1'36.082 1'36.262	15	0.180
16 71 FLACK M. (AUS)	Tatuus F.4 T421	23.788	23.951 +0.113	27.332 +0.043	21.116	1'36.187 1'36.343	18	0.156
17 41 RIED J. (DEU)	Tatuus F.4 T421	23.800 +0.086	24.006 +0.017	27.341 +0.075	21.078	1'36.225 1'36.403	19	0.178
18 9 SPINA A. (ITA)	Tatuus F.4 T421	23.819 +0.061	23.971	27.286	21.151 +0.049	1'36.227 1'36.337	17	0.110
19 33 BADOER B. (ITA)	Tatuus F.4 T421	23.785 +0.031	24.012 +0.037	27.284	21.172 +0.096	1'36.253 1'36.417	20	0.164
20 2 DEUKMEDJAN A. (USA)	Tatuus F.4 T421	23.861	24.030 +0.012	27.468	20.953	1'36.312 1'36.324	16	0.012
21 11 PERINO P. (MOZ)	Tatuus F.4 T421	23.869	23.969 +0.050	27.392 +0.249	21.123	1'36.353 1'36.652	23	0.299
22 35 CLEROT P. (BRA)	Tatuus F.4 T421	23.941	24.067 +0.021	27.335	21.135	1'36.478 1'36.499	21	0.021
23 96 CASTRO J. (BEL)	Tatuus F.4 T421	23.845	24.091	27.487	21.165 +0.005	1'36.588 1'36.593	22	0.005
24 28 KLUSS V. (DEU)	Tatuus F.4 T421	23.921 +0.040	24.118	27.484 +0.021	21.090	1'36.613 1'36.674	24	0.061
25 14 LUND F. (DEN)	Tatuus F.4 T421	23.924	24.010	27.485	21.288 +0.225	1'36.707 1'36.932	26	0.225
26 78 BLOKINA V.	Tatuus F.4 T421	24.023	24.059 +0.059	27.451	21.231 +0.071	1'36.764 1'36.894	25	0.130
27 19 KARLSSON W. (SWE)	Tatuus F.4 T421	23.985 +0.072	24.170 +0.081	27.416 +0.058	21.278 +0.018	1'36.849 1'37.078	27	0.229
28 48 SPERANDIO E. (CHE)	Tatuus F.4 T421	23.997 +0.099	24.029 +0.054	27.657 +0.060	21.269 +0.018	1'36.952 1'37.183	28	0.231
29 27 ISCHER E. (CHE)	Tatuus F.4 T421	24.051 +0.142	24.117	27.624	21.398 +0.044	1'37.190 1'37.376	30	0.186
30 21 FRASSINETI A. (ITA)	Tatuus F.4 T421	23.914	24.176 +0.031	27.702 +0.007	21.490 +0.033	1'37.282 1'37.353	29	0.071
31 18 HWARANG K. (KOR)	Tatuus F.4 T421	24.179 +0.128	24.256	27.578 +0.138	21.389	1'37.402 1'37.668	33	0.266
32 62 QUONDAMCARLO M. ()	Tatuus F.4 T421	24.193	24.203	27.588	21.461 +0.124	1'37.445 1'37.569	31	0.124
33 23 PARTYSHEV O. (UKR)	Tatuus F.4 T421	24.159	24.258 +0.055	27.793 +0.061	21.306	1'37.516 1'37.632	32	0.116

04/06/2022

Powered by FICr PERUGIA TIMING





ACI Racing Weekend Misano, 4-5 Giugno 2022

Italian F4 Championship - Ideal Time Qualifying 1

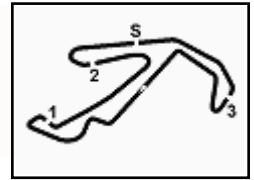
 Misano Circuit Sic 58 4.226 m
2 / 2

No. Driver	Car	Seg. 1	Seg. 2	Seg. 3	Seg. 4	Ideal Time		
		Diff. 1	Diff. 2	Diff. 3	Diff. 4	Best Lap	Pos.	Diff.
34 29 RISHAB A. (SGP)	Tatuus F.4 T421	24.390 +0.037	24.216 +0.061	27.796 +0.113	21.419 +0.016	1'37.821 1'38.048	34	0.227
35 61 MASCHIO G. (ITA)	Tatuus F.4 T421	24.379 +0.063	24.237	27.684 +0.134	21.533 +0.083	1'37.833 1'38.113	35	0.280
36 36 AKHMED I. (UZB)	Tatuus F.4 T421	24.438	24.303 +0.200	27.935 +0.112	21.628 +0.075	1'38.304 1'38.691	36	0.387
Overall Ideal Time		23.431	23.710	27.061	20.732	1'34.934		





3.4



ACI Racing Weekend Misano, 4-5 Giugno 2022 Italian F4 Championship - Chronological Analysis Qualifying 1

Misano Circuit Sic 58.4.226 m

1 / 4

2 A. DEUKMEDJAN (1'36.324)							
Lap	Seg.1	Seg.2	Seg.3	Seg.4	Lap Time	km/h	Local Time
1		27.374	29.544	23.584	182.7	9:37'24.838	
2	24.705	24.783	27.927	26.712	1'44.127	194,9	9:39'08.965
3	24.237	24.236	27.695	21.306	1'37.474	193,5	9:40'46.439
4	23.986	24.175	27.557	21.089	1'36.807	193,2	9:42'23.246
5	23.904	24.091	27.502	21.179	1'36.676	193,9	9:43'59.922
6	23.911	24.149	27.584	21.036	1'36.680	192,9	9:45'36.602
7	27.768	29.728	27.675	21.159	1'46.330	196,4	9:47'22.932
8	23.861	24.042	27.468	20.953	1'36.324	195,3	9:48'59.256
9	24.042	24.030	27.577	21.583	1'37.232	194,2	9:50'36.488

1		28.517	33.009	23.707	158,8	9:37'15.647	
2	26.349	25.224	29.465	22.053	1'43.091	184,6	9:38'58.738
3	23.882	24.027	27.477	21.181	1'36.567	196,4	9:40'35.305
4	24.507	25.525	27.886	21.026	1'38.944	194,9	9:42'14.249
5	23.600	23.889	27.295	20.804	1'35.588	197,4	9:43'49.837
6	23.812	23.969	31.903	21.155	1'40.839	168,8	9:45'30.676
7	23.595	23.912	27.231	20.850	1'35.588	196,4	9:47'06.264
8	24.008	27.013	28.300	21.118	1'40.439	196,7	9:48'46.703
9	23.558	23.995	27.109	20.853	1'35.515	194,9	9:50'22.218

7 C. WURZ (1'35.610)							
Lap	Seg.1	Seg.2	Seg.3	Seg.4	Lap Time	km/h	Local Time
1		27.936	30.879	22.758	175,6	9:37'05.959	
2	25.140	27.252	30.094	21.722	1'44.208	174,2	9:38'50.167
3	24.147	24.132	27.585	21.138	1'37.002	193,9	9:40'27.169
4	23.817	23.890	27.372	21.167	1'36.246	193,9	9:42'03.415
5	23.700	23.931	27.356	21.040	1'36.027	193,9	9:43'39.442
6	28.689	27.583	29.127	21.733	1'47.132	193,9	9:45'26.574
7	23.592	23.873	27.157	20.988	1'35.610	196,0	9:47'02.184
8	23.702	23.914	27.234	20.949	1'35.799	195,3	9:48'37.983
9	23.733	23.842	27.332	20.816	1'35.723	194,2	9:50'13.706

14 F. LUND (1'36.932)							
Lap	Seg.1	Seg.2	Seg.3	Seg.4	Lap Time	km/h	Local Time
1							9:35'10.479
2	56.007	27.714	30.207	23.106	2'17.034P	173,1	9:37'27.513
3	25.620	24.914	32.769	22.897	1'46.200	175,9	9:39'13.713
4	24.057	24.339	27.872	21.288	1'37.556	193,5	9:40'51.269
5	24.088	24.240	27.642	21.309	1'37.279	193,9	9:42'28.548
6	28.201	29.194	34.208	23.498	1'55.101	141,2	9:44'23.649
7	24.458	24.199	27.638	21.293	1'37.588	196,0	9:46'01.237
8	24.333	24.094	27.595	21.543	1'37.565	196,7	9:47'38.802
9	26.818	27.014	27.598	21.300	1'42.730	195,7	9:49'21.532
10	23.924	24.010	27.485	21.513	1'36.932	196,4	9:50'58.464

9 A. SPINA (1'36.337)							
Lap	Seg.1	Seg.2	Seg.3	Seg.4	Lap Time	km/h	Local Time
1							9:35'19.700
2	53.800	28.829	32.142	22.918	2'17.689P	189,1	9:37'37.389
3	27.290	27.111	38.134	23.054	1'55.589	148,4	9:39'32.978
4	24.019	24.349	27.791	21.518	1'37.677	193,9	9:41'10.655
5	23.996	24.100	27.625	21.197	1'36.918	195,3	9:42'47.573
6	26.577	25.807	28.414	21.444	1'42.242	194,2	9:44'29.815
7	23.845	24.028	27.728	21.369	1'36.970	195,3	9:46'06.785
8	23.874	24.022	30.418	25.331	1'43.645	196,4	9:47'50.430
9	23.819	24.035	27.647	21.151	1'36.652	194,9	9:49'27.082
10	23.880	23.971	27.286	21.200	1'36.337	198,5	9:51'03.419

15 N. BEDRIN (1'35.900)							
Lap	Seg.1	Seg.2	Seg.3	Seg.4	Lap Time	km/h	Local Time
1		27.494	30.751	23.088	181,8	9:37'20.882	
2	25.201	25.884	28.551	24.726	1'44.362	188,5	9:39'05.244
3	24.059	24.168	27.297	21.128	1'36.652	198,2	9:40'41.896
4	23.846	24.033	27.286	21.091	1'36.256	194,2	9:42'18.152
5	23.719	23.957	27.163	21.061	1'35.900	197,8	9:43'54.052
6	23.860	24.076	37.762	24.586	1'50.284	160,7	9:45'44.336
7	23.799	24.035	27.186	21.163	1'36.183	197,1	9:47'20.519
8	23.774	23.943	27.111	23.160	1'37.988	196,7	9:48'58.507
9	23.878	24.003	27.219	21.273	1'36.373	196,4	9:50'34.880

11 P. PERINO (1'36.652)							
Lap	Seg.1	Seg.2	Seg.3	Seg.4	Lap Time	km/h	Local Time
1		28.173	34.646	29.194	148,8	9:38'50.871	
2	24.600	24.762	28.512	22.787	1'40.661	188,2	9:40'31.532
3	24.121	24.086	27.664	21.167	1'37.038	194,6	9:42'08.570
4	23.897	24.132	28.140	21.970	1'38.139	194,2	9:43'46.709
5	23.890	25.655	29.241	21.743	1'40.529	194,9	9:45'27.238
6	23.869	24.019	27.641	21.123	1'36.652	194,9	9:47'03.890
7	23.927	23.985	27.392	21.406	1'36.710	195,3	9:48'40.600
8	23.870	23.969	27.473	39.416	1'54.728P	194,2	9:50'35.328

17 E. FITTIPALDI (1'36.249)							
Lap	Seg.1	Seg.2	Seg.3	Seg.4	Lap Time	km/h	Local Time
1		26.610	30.696	23.424	190,8	9:37'23.971	
2	24.391	24.477	28.880	29.637	1'47.385	193,2	9:39'11.356
3	24.057	24.057	27.892	21.291	1'37.297	194,2	9:40'48.653
4	24.027	24.111	27.509	20.982	1'36.629	194,9	9:42'25.282
5	23.847	24.004	27.416	21.068	1'36.335	196,0	9:44'01.617
6	23.822	23.953	27.383	21.091	1'36.249	197,1	9:45'37.866
7	23.877	23.986	27.462	21.070	1'36.395	195,7	9:47'14.261
8	23.736	23.892	27.455	24.710	1'39.793	195,7	9:48'54.054
9	23.871	23.928	27.467	21.038	1'36.304	196,4	9:50'30.358

12 K. ANTONELLI (1'35.052)							
Lap	Seg.1	Seg.2	Seg.3	Seg.4	Lap Time	km/h	Local Time
1		29.896	33.233	23.534	149,8	9:37'14.748	
2	25.594	25.304	29.392	21.632	1'41.922	186,5	9:38'56.670
3	23.798	24.000	27.249	23.307	1'38.354	196,4	9:40'35.024
4	23.815	23.772	27.184	20.787	1'35.558	195,7	9:42'10.582
5	23.572	23.730	27.068	20.850	1'35.220	196,7	9:43'45.802
6	23.856	26.059	28.557	21.403	1'39.875	194,2	9:45'25.677
7	23.431	23.727	27.061	20.885	1'35.104	195,7	9:47'00.781
8	26.107	26.559	29.099	21.046	1'42.811	188,5	9:48'43.592
9	23.471	23.710	27.081	20.790	1'35.052	196,7	9:50'18.644

18 K. HWARANG (1'37.668)							
Lap	Seg.1	Seg.2	Seg.3	Seg.4	Lap Time	km/h	Local Time
1							9:35'27.840
2	48.518	26.347	32.107	22.790	2'09.762P	193,5	9:37'37.602
3	27.595	26.728	31.594	24.243	1'50.160	175,9	9:39'27.762
4	24.651	24.424	27.727	22.026	1'38.828	196,7	9:41'06.590
5	24.393	25.330	28.345	21.642	1'39.710	196,0	9:42'46.300
6	24.229	24.263	27.578	21.887	1'37.957	196,7	9:44'24.257
7	24.543	24.274	27.680	22.223	1'38.720	198,9	9:46'02.977
8	24.307	24.256	27.716	21.389	1'37.668	196,7	9:47'40.645
9	24.179	24.297	28.135	1'02.492	2'19.103	196,4	9:49'59.748

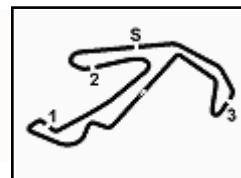
13 J. WHARTON (1'35.515)							
Lap	Seg.1	Seg.2	Seg.3	Seg.4	Lap Time	km/h	Local Time

19 W. KARLSSON (1'37.078)							
Lap	Seg.1	Seg.2	Seg.3	Seg.4	Lap Time	km/h	Local Time
1							9:35'29.701

04/06/2022 P = Pits In/Out - C = Lap Time Cancelled

Powered by FICr PERUGIA TIMING





ACI Racing Weekend Misano, 4-5 Giugno 2022

Italian F4 Championship - Chronological Analysis Qualifying 1

Misano Circuit Sic 58 4.226 m

2 / 4

2	48.814	27.801	31.324	23.047	2'10.986P	177,6	9:37'40.687	2	53.576	29.513	33.248	23.030	2'19.367P	141,5	9:37'33.234
3	25.788	27.135	31.173	23.835	1'47.931	187,8	9:39'28.618	3	25.821	27.103	35.379	23.675	1'51.978	162,7	9:39'25.212
4	24.940	24.771	29.207	21.761	1'40.679	167,2	9:41'09.297	4	24.163	24.392	27.909	21.525	1'37.989	193,5	9:41'03.201
5	23.990	24.170	27.570	21.636	1'37.366	197,1	9:42'46.663	5	24.238	24.271	27.717	21.445	1'37.671	195,7	9:42'40.872
6	24.141	24.299	27.785	21.839	1'38.064	196,4	9:44'24.727	6	24.231	24.387	27.718	21.523	1'37.859	194,9	9:44'18.731
7	24.581	24.181	27.534	21.315	1'37.611	197,1	9:46'02.338	7	24.193	24.117	27.624	21.442	1'37.376	195,7	9:45'56.107
8	24.204	24.256	27.416	21.278	1'37.154	195,7	9:47'39.492	8	24.273	24.122	27.632	21.527	1'37.554	194,9	9:47'33.661
9	24.057	24.251	27.474	21.296	1'37.078	196,0	9:49'16.570	9	24.051	24.221	27.658	21.619	1'37.549	195,7	9:49'11.210
10	23.985	24.331	27.847	21.298	1'37.461	192,5	9:50'54.031	10	24.314	24.667	28.754	21.398	1'39.133	189,1	9:50'50.343

20 C. LAURSEN (1'35.703)								28 V. KLUSS (1'36.674)							
Lap	Seg.1	Seg.2	Seg.3	Seg.4	Lap Time	km/h	Local Time	Lap	Seg.1	Seg.2	Seg.3	Seg.4	Lap Time	km/h	Local Time
1		28.501	32.667	23.851		177,9	9:37'16.669	1							9:35'17.680
2	25.912	25.569	29.284	22.363	1'43.128	187,5	9:38'59.797	2	52.338	29.405	32.014	22.653	2'16.410P	157,9	9:37'34.090
3	24.112	24.073	27.463	21.267	1'36.915	196,4	9:40'36.712	3	25.970	27.772	34.962	23.898	1'52.602	169,5	9:39'26.692
4	23.810	23.912	27.430	21.013	1'36.165	195,7	9:42'12.877	4	24.711	24.349	27.765	21.281	1'38.106	193,9	9:41'04.798
5	23.652	23.960	27.337	20.835	1'35.784	194,2	9:43'48.661	5	24.084	24.169	27.527	21.315	1'37.095	194,9	9:42'41.893
6	26.315	29.598	36.913	21.157	1'53.983	119,2	9:45'42.644	6	25.305	26.549	32.638	22.036	1'46.528	166,2	9:44'28.421
7	23.659	23.865	27.248	20.931	1'35.703	195,7	9:47'18.347	7	23.961	24.118	27.505	21.090	1'36.674	195,3	9:46'05.095
8	23.753	23.850	27.429	22.269	1'37.301	196,0	9:48'55.648	8	23.928	24.307	27.522	25.119	1'40.876	195,7	9:47'45.971
9	23.861	23.999	29.734	37.774	1'55.368P	147,5	9:50'51.016	9	24.288	28.264	31.830	21.541	1'45.923	173,1	9:49'31.894
10								10	23.921	24.122	27.484	21.201	1'36.728	194,2	9:51'08.622

21 A. FRASSINETI (1'37.353)								29 A. RISHAB (1'38.048)							
Lap	Seg.1	Seg.2	Seg.3	Seg.4	Lap Time	km/h	Local Time	Lap	Seg.1	Seg.2	Seg.3	Seg.4	Lap Time	km/h	Local Time
1							9:35'23.359	1							9:35'21.488
2	50.681	27.929	31.014	22.315	2'11.939P	175,9	9:37'35.298	2	53.503	29.137	32.407	23.183	2'18.230P	190,1	9:37'39.718
3	25.110	25.400	34.046	24.170	1'48.726	149,8	9:39'24.024	3	26.071	27.230	37.555	23.760	1'54.616	161,7	9:39'34.334
4	24.151	24.393	27.879	21.490	1'37.913	194,6	9:41'01.937	4	24.911	24.708	27.999	21.925	1'39.543	194,2	9:41'13.877
5	24.322	24.287	27.892	23.088	1'39.589	193,5	9:42'41.526	5	24.698	24.345	27.896	21.482	1'38.421	195,7	9:42'52.298
6	24.218	24.176	28.008	23.216	1'39.618	195,3	9:44'21.144	6	24.511	24.216	28.263	22.158	1'39.148	195,7	9:44'31.446
7	23.914	24.207	27.709	21.523	1'37.353	195,7	9:45'58.497	7	24.501	24.344	27.796	21.419	1'38.060	195,7	9:46'09.506
8	24.269	25.412	28.623	21.582	1'39.886	192,9	9:47'38.383	8	24.756	25.991	33.114	21.603	1'45.464	162,2	9:47'54.970
9	24.145	24.211	27.702	21.559	1'37.617	194,6	9:49'16.000	9	24.427	24.277	27.909	21.435	1'38.048	194,9	9:49'33.018
10	24.315	24.237	28.020	21.937	1'38.509	194,9	9:50'54.509								

22 A. DUNNE (1'35.524)								33 B. BADOER (1'36.417)							
Lap	Seg.1	Seg.2	Seg.3	Seg.4	Lap Time	km/h	Local Time	Lap	Seg.1	Seg.2	Seg.3	Seg.4	Lap Time	km/h	Local Time
1		26.140	30.846	27.230		187,8	9:38'48.200	1							9:35'07.284
2	24.871	26.407	28.609	22.604	1'42.491	190,8	9:40'30.691	2	58.421	28.043	30.017	23.174	2'19.655P	191,2	9:37'26.939
3	23.821	24.010	27.293	20.975	1'36.099	197,4	9:42'06.790	3	26.916	28.899	34.289	24.765	1'54.869	176,2	9:39'21.808
4	23.759	24.009	27.202	20.817	1'35.787	195,7	9:43'42.577	4	24.020	24.492	28.214	21.643	1'38.369	194,2	9:41'00.177
5	23.643	23.953	27.189	20.812	1'35.597	195,3	9:45'18.174	5	23.895	24.074	27.494	21.957	1'37.420	194,9	9:42'37.597
6	23.528	25.484	35.608	25.834	1'50.454	150,6	9:47'08.628	6	24.555	24.117	27.561	21.289	1'37.522	196,4	9:44'15.119
7	23.559	23.860	27.177	20.928	1'35.524	197,1	9:48'44.152	7	23.785	24.098	27.528	21.172	1'36.583	196,0	9:45'51.702
8	24.127	24.456	27.397	38.105	1'54.085P	194,9	9:50'38.237	8	23.816	24.049	27.284	21.268	1'36.417	196,4	9:47'28.119
9								9	23.810	24.068	27.356	21.239	1'36.473	196,4	9:49'04.592
10								10	23.807	24.012	27.353	21.300	1'36.472	196,0	9:50'41.064

23 O. PARTYSHEV (1'37.632)								34 M. STENSHORNE (1'35.931)							
Lap	Seg.1	Seg.2	Seg.3	Seg.4	Lap Time	km/h	Local Time	Lap	Seg.1	Seg.2	Seg.3	Seg.4	Lap Time	km/h	Local Time
1							9:35'15.943	1							9:37'21.408
2	52.442	27.575	29.598	23.701	2'13.316P	183,7	9:37'29.259	2	25.176	24.949	28.596	22.923	1'41.644	190,1	9:39'03.052
3	25.594	28.873	34.224	24.656	1'53.347	158,6	9:39'22.606	3	24.026	24.069	27.399	21.057	1'36.551	196,0	9:40'39.603
4	24.208	24.484	27.793	21.497	1'37.982	194,2	9:41'00.588	4	23.832	24.011	27.282	21.071	1'36.196	197,4	9:42'15.799
5	24.893	24.378	27.914	21.375	1'38.560	192,9	9:42'39.148	5	24.189	23.936	27.249	21.083	1'36.457	196,7	9:43'52.256
6	24.159	24.313	27.854	21.306	1'37.632	191,8	9:44'16.780	6	23.812	23.963	27.291	20.992	1'36.058	197,1	9:45'28.314
7	24.329	24.591	27.814	21.325	1'38.059	191,8	9:45'54.839	7	25.240	27.412	33.199	21.697	1'47.548	165,1	9:47'15.862
8	26.603	26.349	32.552	21.706	1'47.210	178,2	9:47'42.049	8	23.719	23.938	27.195	21.079	1'35.931	197,4	9:48'51.793
9	24.231	24.258	27.890	21.425	1'37.804	193,5	9:49'19.853	9	23.791	23.933	27.233	21.076	1'36.033	196,4	9:50'27.826
10	24.267	24.269	27.849	21.425	1'37.810	192,9	9:50'57.663								

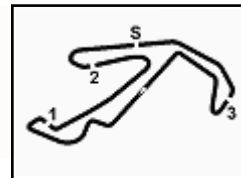
27 E. ISCHER (1'37.376)								35 P. CLEROT (1'36.499)								
Lap	Seg.1	Seg.2	Seg.3	Seg.4	Lap Time	km/h	Local Time	Lap	Seg.1	Seg.2	Seg.3	Seg.4	Lap Time	km/h	Local Time	
1							9:35'13.867	1								

04/06/2022

P = Pits In/Out - C = Lap Time Cancelled

Powered by FICr PERUGIA TIMING





Misano Circuit Sic 58 4.226 m

4 / 4

6	23.791	24.243	27.251	21.057	1'36.342	197,1	9:46'16.159	7	24.335	24.217	27.712	21.270	1'37.534	194,9	9:47'32.786
7	23.806	24.036	27.361	21.193	1'36.396	196,4	9:47'52.555	8	23.845	24.091	27.487	21.170	1'36.593	195,3	9:49'09.379
8	29.744	26.630	35.389	21.424	1'53.187	124,9	9:49'45.742	9	23.854	24.115	27.521	21.165	1'36.655	195,3	9:50'46.034
9	23.802	23.993	27.276	21.041	1'36.112	196,0	9:51'21.854								

78 V. BLOKINA (1'36.894)

Lap	Seg.1	Seg.2	Seg.3	Seg.4	Lap Time	km/h	Local Time
1		27.646	30.490	23.048		184,3	9:37'48.403
2	25.009	24.875	28.800	21.988	1'40.672	192,5	9:39'29.075
3	25.125	24.622	28.095	21.318	1'39.160	194,6	9:41'08.235
4	24.224	24.135	27.706	21.231	1'37.296	195,7	9:42'45.531
5	24.079	24.121	27.561	21.575	1'37.336	196,0	9:44'22.867
6	27.500	32.140	35.822	21.563	1'57.025	110,7	9:46'19.892
7	24.040	24.059	27.541	21.297	1'36.937	195,3	9:47'56.829
8	24.023	24.118	27.451	21.302	1'36.894	196,0	9:49'33.723
9	24.136	24.087	27.456	21.384	1'37.063	196,4	9:51'10.786

83 M. WEUG (1'35.790)

Lap	Seg.1	Seg.2	Seg.3	Seg.4	Lap Time	km/h	Local Time
1							9:36'11.393
2	45.656	28.024	30.451	22.820	2'06.951P	181,8	9:38'18.344
3	25.645	25.502	28.421	21.724	1'41.292	191,8	9:39'59.636
4	23.950	24.147	27.603	21.038	1'36.738	194,2	9:41'36.374
5	23.755	24.006	27.444	20.987	1'36.192	194,2	9:43'12.566
6	23.724	24.058	27.437	20.970	1'36.189	194,6	9:44'48.755
7	25.598	24.743	27.953	21.389	1'39.683	195,3	9:46'28.438
8	23.704	23.940	27.314	21.317	1'36.275	195,7	9:48'04.713
9	23.718	24.002	27.238	20.941	1'35.899	196,0	9:49'40.612
10	23.700	23.889	27.235	20.966	1'35.790	195,7	9:51'16.402

88 R. CAMARA (1'35.318)

Lap	Seg.1	Seg.2	Seg.3	Seg.4	Lap Time	km/h	Local Time
1		28.922	31.657	22.900		168,2	9:37'19.907
2	25.236	25.383	28.664	22.293	1'41.576	190,5	9:39'01.483
3	23.744	23.984	27.951	21.495	1'37.174	197,8	9:40'38.657
4	23.881	23.934	27.081	21.818	1'36.714	199,6	9:42'15.371
5	23.694	23.770	27.285	20.794	1'35.543	198,5	9:43'50.914
6	26.035	33.079	33.935	22.447	1'55.496	142,5	9:45'46.410
7	23.575	23.778	27.233	20.732	1'35.318	197,4	9:47'21.728
8	23.607	23.724	27.103	21.097	1'35.531	198,9	9:48'57.259
9	23.591	23.747	27.238	20.827	1'35.403	198,2	9:50'32.662

89 I. DOMINGUES (1'36.127)

Lap	Seg.1	Seg.2	Seg.3	Seg.4	Lap Time	km/h	Local Time
1							9:36'16.632
2	44.079	29.026	31.386	22.255	2'06.746P	159,1	9:38'23.378
3	25.136	24.970	28.558	22.042	1'40.706	185,9	9:40'04.084
4	23.908	24.123	27.642	21.253	1'36.926	195,7	9:41'41.010
5	23.869	23.997	27.407	21.026	1'36.299	194,9	9:43'17.309
6	23.695	23.982	27.402	21.129	1'36.208	196,0	9:44'53.517
7	23.850	24.016	33.848	24.513	1'46.227	141,2	9:46'39.744
8	24.854	27.361	30.792	21.859	1'44.866	191,2	9:48'24.610
9	23.645	24.032	27.310	21.140	1'36.127	196,0	9:50'00.737

96 J. CASTRO (1'36.593)

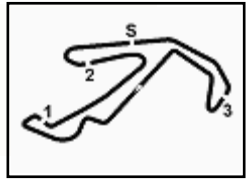
Lap	Seg.1	Seg.2	Seg.3	Seg.4	Lap Time	km/h	Local Time
1		28.125	29.889	23.264		187,8	9:37'26.475
2	25.745	25.373	34.804	22.452	1'48.374	155,2	9:39'14.849
3	24.038	24.222	27.496	21.366	1'37.122	195,3	9:40'51.971
4	23.939	24.138	27.580	21.433	1'37.090	196,7	9:42'29.061
5	28.610	29.122	29.893	21.516	1'49.141	160,0	9:44'18.202
6	23.917	24.152	27.621	21.360	1'37.050	196,0	9:45'55.252

04/06/2022

P = Pits In/Out - C = Lap Time Cancelled

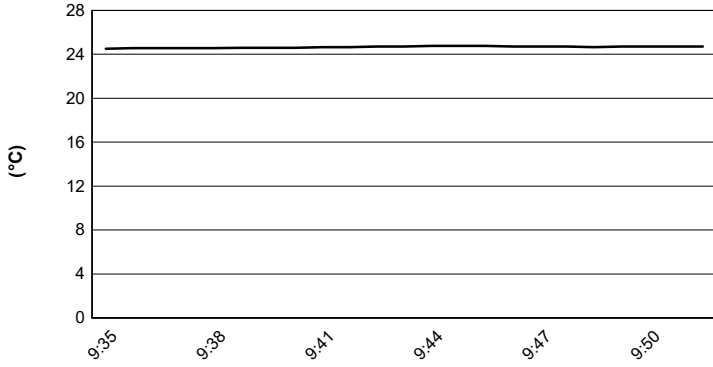
Powered by FICr PERUGIA TIMING



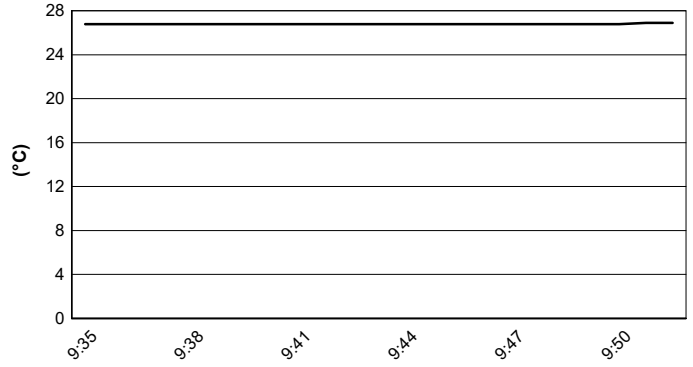


ACI Racing Weekend Misano, 4-5 Giugno 2022
Italian F4 Championship - Weather Report Qualifying 1
 Session started 09:35 - Session ended 9:52

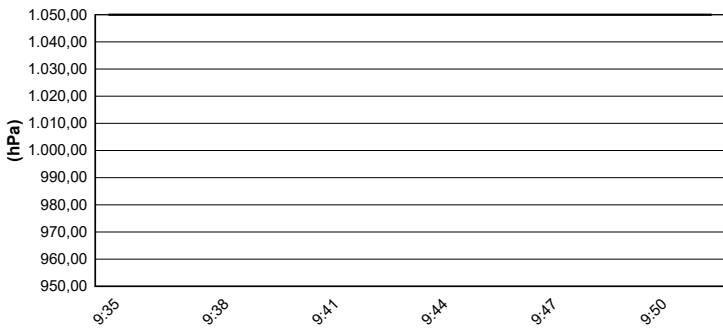
Air Temperature



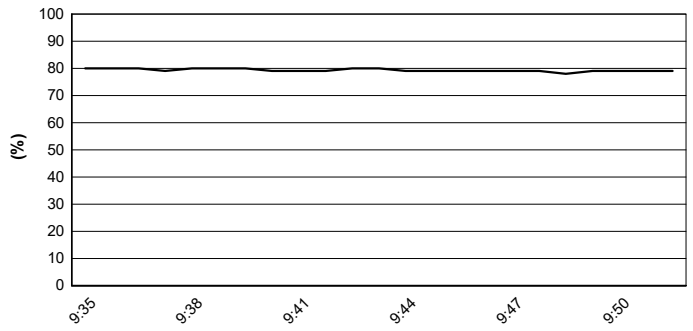
Track Temperature



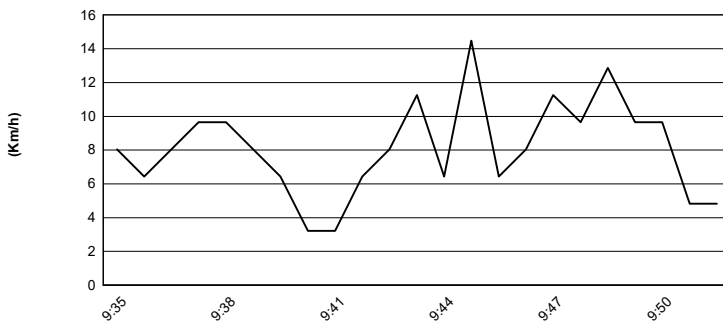
Air Pressure



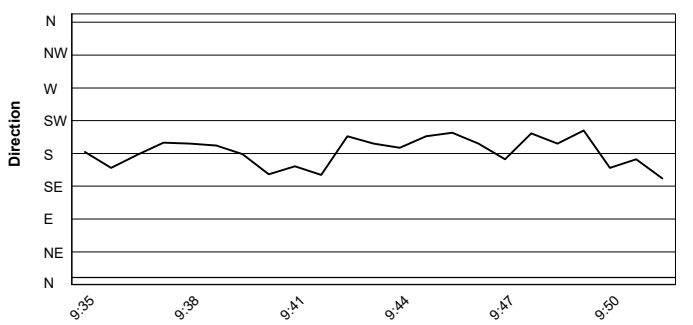
Humidity



Wind Speed

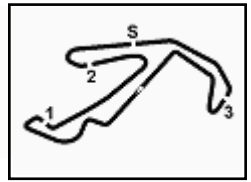


Wind Direction



04/06/2022





ACI Racing Weekend Misano, 4-5 Giugno 2022

Italian F4 Championship - Result Second Time Qualifying 1

 Misano Circuit Sic 58 4.226 m
 1 / 2

No.	Driver	Nat	Entrant	Team	Car	Class	Time	Gap	Rel.	Laps
1	12 ANTONELLI Kimi Andrea	ITA	Prema Racing	Prema Racing	Tatuus F.4 T421	R	1'35.104			8
2	88 CAMARA Rafael	BRA	Prema Racing	Prema Racing	Tatuus F.4 T421	R	1'35.403	0.299	0.299	8
3	13 WHARTON James Anthony	AUS	Prema Racing	Prema Racing	Tatuus F.4 T421	R	1'35.588	0.484	0.185	8
4	22 DUNNE Alexander	IRL	US Racing	US Racing	Tatuus F.4 T421		1'35.597	0.493	0.009	7
5	7 WURZ Charlie	AUT	Prema Racing	Prema Racing	Tatuus F.4 T421	R	1'35.723	0.619	0.126	8
6	52 AMAND Marcus	FRA	US Racing	US Racing	Tatuus F.4 T421		1'35.726	0.622	0.003	5
7	20 LAURSEN Conrad	DEN	Prema Racing	Prema Racing	Tatuus F.4 T421		1'35.784	0.680	0.058	8
8	37 SZTUKA Kacper	POL	US Racing	US Racing	Tatuus F.4 T421		1'35.831	0.727	0.047	8
9	83 WEUG Maya	NLD	Iron Dames	Iron Dames	Tatuus F.4 T421		1'35.899	0.795	0.068	9
10	34 STENSHORNE Martinus	NOR	Van Amersfoort Racing	Van Amersfoort Racing	Tatuus F.4 T421	R	1'36.033	0.929	0.134	8
11	15 BEDRIN Nikita		PHM Racing	PHM Racing	Tatuus F.4 T421		1'36.183	1.079	0.150	8
12	89 DOMINGUES Ivan Franco	POR	Iron Lynx	Iron Lynx	Tatuus F.4 T421	R	1'36.208	1.104	0.025	8
13	44 BOHRA Nikhil	USA	US Racing	US Racing	Tatuus F.4 T421	R	1'36.265	1.161	0.057	7
14	17 FITTIPALDI Emerson Jr.	BRA	Van Amersfoort Racing	Van Amersfoort Racing	Tatuus F.4 T421	R	1'36.304	1.200	0.039	8
15	77 BARNARD Taylor	GBR	PHM Racing	PHM Racing	Tatuus F.4 T421		1'36.342	1.238	0.038	8
16	33 BADOER Brando	ITA	Van Amersfoort Racing	Van Amersfoort Racing	Tatuus F.4 T421	R	1'36.472	1.368	0.130	9
17	41 RIED Jonas	DEU	PHM Racing	PHM Racing	Tatuus F.4 T421		1'36.491	1.387	0.019	8
18	71 FLACK Marcos	AUS	R-ACE GP	R-ACE GP	Tatuus F.4 T421		1'36.613	1.509	0.122	9
19	35 CLEROT Pedro	BRA	AKM Motorsport	AKM Motorsport	Tatuus F.4 T421	R	1'36.629	1.525	0.016	8
20	9 SPINA Alfio Andrea	ITA	BWR Motorsport	BWR Motorsport	Tatuus F.4 T421	R	1'36.652	1.548	0.023	9
21	96 CASTRO Jules	BEL	Van Amersfoort Racing	Van Amersfoort Racing	Tatuus F.4 T421	R	1'36.655	1.551	0.003	8
22	2 DEUKMEDJAN Arias	USA	Van Amersfoort Racing	Van Amersfoort Racing	Tatuus F.4 T421	R	1'36.676	1.572	0.021	8
23	11 PERINO Pedro	MOZ	US Racing	US Racing	Tatuus F.4 T421		1'36.710	1.606	0.034	7
24	28 KLUSS Valentin	DEU	Jenzer Motorsport	Jenzer Motorsport	Tatuus F.4 T421	R	1'36.728	1.624	0.018	9
25	78 BLOKINA Viktoria		PHM Racing	PHM Racing	Tatuus F.4 T421	R	1'36.937	1.833	0.209	8
26	19 KARLSSON William	SWE	BVM Racing	BVM Racing	Tatuus F.4 T421	R	1'37.154	2.050	0.217	9
27	48 SPERANDIO Elia	CHE	Maffi Racing	Maffi Racing	Tatuus F.4 T421	R	1'37.185	2.081	0.031	8
28	14 LUND Frederik	DEN	R-ACE GP	R-ACE GP	Tatuus F.4 T421	R	1'37.279	2.175	0.094	9
29	27 ISCHER Ethan	CHE	Jenzer Motorsport	Jenzer Motorsport	Tatuus F.4 T421	R	1'37.549	2.445	0.270	9
30	21 FRASSINETI Andrea	ITA	Frassinetti Albano	Cars Racing	Tatuus F.4 T421	R	1'37.617	2.513	0.068	9
31	23 PARTYSHEV Oleksandr	UKR	Jenzer Motorsport	Jenzer Motorsport	Tatuus F.4 T421		1'37.804	2.700	0.187	9
32	62 QUONDAMCARLO Manuel	ITA	AS Motorsport	AS Motorsport	Tatuus F.4 T421		1'37.948	2.844	0.144	9
33	18 HWARANG Kim	KOR	BVM Racing	BVM Racing	Tatuus F.4 T421	R	1'37.957	2.853	0.009	8
34	29 RISHAB Anandraj Jain	SGP	BWR Motorsport	BWR Motorsport	Tatuus F.4 T421	R	1'38.060	2.956	0.103	8
35	61 MASCHIO Giovanni	ITA	AS Motorsport	AS Motorsport	Tatuus F.4 T421	R	1'38.133	3.029	0.073	9
36	36 AKHMED Ismail	UZB	AKM Motorsport	AKM Motorsport	Tatuus F.4 T421	R	1'38.709	3.605	0.576	8

Clerk of the Course : Fabrizio Fondacci

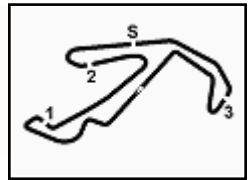
Race Director : Alessandro Ferrari

Start	End
04/06/2022 09:35	09:52





3.6



ACI Racing Weekend Misano, 4-5 Giugno 2022
Italian F4 Championship - Result Second Time Qualifying 1

Misano Circuit Sic 58 4.226 m
2 / 2

Humidity:	79%	AIR	24°C
Condition:	DRY	Track	26°C

Clerk of the Course : Fabrizio Fondacci

Race Director : Alessandro Ferrari

	Start	End
04/06/2022	09:35	09:52

Powered by FICr PERUGIA TIMING

