

Imola Circuit 4.909 m

# ACI Racing Weekend Imola, 7-8 Maggio 2022

## TCR Italy - Classifica Gara 2

Giri 12 = 58,908 km - Media 127,077 km/h - Tempo di gara 27'48.825

| Num.                         | Conditore                      | Naz | Concorrente          | Team                   | Auto                   | Classe | Giri | Tempo     | Dist.          | Rel.          | Giro Veloce       |
|------------------------------|--------------------------------|-----|----------------------|------------------------|------------------------|--------|------|-----------|----------------|---------------|-------------------|
| 1                            | <b>12 FERNÁNDEZ</b> Gil Rubén  | ESP | Auto Club RC2 Valles | Auto Club RC2 Valles   | Audi RS3 LMS TCR       | TCR    | 12   | 27'48.825 |                |               | 4 1'53.337        |
| 2                            | <b>44 IMBERTI</b> Michele      | ITA | Imberti Michele      |                        | Hyundai i30 N TCR      | TCR    | 12   | 27'49.284 | <b>0.459</b>   | <b>0.459</b>  | 4 1'53.369        |
| 3                            | <b>5 BISSA</b> Manuel          | ITA | Bissa Manuel         | MM Motorsport          | Honda Civic FK7 H70    | TCR    | 12   | 27'49.658 | <b>0.833</b>   | <b>0.374</b>  | 4 1'53.767        |
| 4                            | <b>27 VOLT</b> Ruben           | EST | ALM Motorsport       | ALM Motorsport         | Honda Civic FK7 H70    | TCR    | 12   | 27'50.002 | <b>1.177</b>   | <b>0.344</b>  | 5 1'53.628        |
| 5                            | <b>33 TAMBURINI</b> Carlo      | ITA | Tamburini Carlo      | MM Motorsport          | Honda Civic FK7 H70    | TCR    | 12   | 27'50.595 | <b>1.770</b>   | <b>0.593</b>  | 5 1'53.717        |
| 6                            | <b>22 LANGEVELD</b> Niels      | NED | Target               | Target                 | Hyundai Elantra TCR    | TCR    | 12   | 27'50.752 | <b>1.927</b>   | <b>0.157</b>  | 5 1'53.624        |
| 7                            | <b>19 FERNÁNDEZ</b> Gil Felipe | ESP | Auto Club RC2 Valles | Auto Club RC2 Valles   | Cupra Leon Competicion | TCR    | 12   | 27'51.186 | <b>2.361</b>   | <b>0.434</b>  | 4 1'53.827        |
| 8                            | <b>4 TAVANO</b> Salvatore      | ITA | Girasole             | Girasole               | Cupra Leon Competicion | TCR    | 12   | 27'51.957 | <b>3.132</b>   | <b>0.771</b>  | 3 1'53.476        |
| 9                            | <b>61 GHERMANDI</b> Giacomo    | ITA | Lema Racing          |                        | Cupra Leon Competicion | TCR    | 12   | 27'52.506 | <b>3.681</b>   | <b>0.549</b>  | 4 1'53.336        |
| 10                           | <b>77 PUSSIER</b> Sylvain      | FRA | Pussier Sylvain      | SP Competicion         | Cupra Leon Competicion | TCR    | 12   | 27'53.062 | <b>4.237</b>   | <b>0.556</b>  | 4 1'53.676        |
| 11                           | <b>37 LOPÉZ BOLOTIN</b> Sergio | VEN | Auto Club RC2 Valles | Auto Club RC2 Valles   | Cupra Leon Competicion | TCR    | 12   | 27'53.508 | <b>4.683</b>   | <b>0.446</b>  | 4 1'53.776        |
| 12                           | <b>66 COLOMBANI</b> Gilles     | FRA | Colombani Gilles     | Team Clairet           | Cupra Leon Competicion | TCR    | 12   | 27'54.128 | <b>5.303</b>   | <b>0.620</b>  | 4 1'54.213        |
| 13                           | <b>20 RAFFAELE</b> Francesca   | ITA | Target               | Target                 | Hyundai i30 N TCR      | TCR    | 12   | 27'55.295 | <b>6.470</b>   | <b>1.167</b>  | 5 1'54.674        |
| 14                           | <b>24 LORENZINI</b> Luca       | ITA | Aggressive Team      | Aggressive Team Italia | Hyundai Elantra TCR    | TCR    | 12   | 27'55.635 | <b>6.810</b>   | <b>0.340</b>  | 3 1'53.932        |
| 15                           | <b>14 IANNOTTA</b> Marco       | ITA | Iannotta Marco       | MM Motorsport          | Honda Civic FK7 H70    | TCR    | 12   | 27'56.383 | <b>7.558</b>   | <b>0.748</b>  | 4 1'54.444        |
| 16                           | <b>18 VENTAJA</b> Stéphane     | FRA | Ventaja Stéphane     | Team Clairet           | Audi RS3 LMS TCR       | TCR    | 12   | 27'56.636 | <b>7.811</b>   | <b>0.253</b>  | 4 1'54.464        |
| 17                           | <b>3 GURRIERI</b> Raffaele     | ITA | Girasole             | Girasole               | Cupra Leon Competicion | TCR    | 12   | 27'57.512 | <b>8.687</b>   | <b>0.876</b>  | 5 1'54.571        |
| 18                           | <b>74 CAPPELLO</b> Edo         | ITA | Capello Edo          | Aggressive Team Italia | Hyundai i30 N TCR      | TCR    | 12   | 27'57.900 | <b>9.075</b>   | <b>0.388</b>  | 4 1'54.219        |
| 19                           | <b>85 MASSARO</b> Rodolfo      | ITA | Massaro Rodolfo      |                        | Audi TCR DSG           | TCDS   | 12   | 27'59.818 | <b>10.993</b>  | <b>1.918</b>  | 2 1'56.772        |
| 20                           | <b>90 TRENTIN</b> Mauro        | ITA | Trentin Mauro        |                        | Audi TCR DSG           | TCDS   | 12   | 28'00.389 | <b>11.564</b>  | <b>0.571</b>  | 4 1'56.426        |
| 21                           | <b>13 ROMANI</b> Emanuele      | ITA | Romani Emanuele      |                        | Hyundai i30 N TCR      | TCR    | 12   | 28'00.570 | <b>11.745</b>  | <b>0.181</b>  | 4 1'56.715        |
| 22P                          | <b>56 BRUSA</b> Cesare         | ITA | Target               | Target                 | Hyundai i30 N TCR      | TCR    | 12   | 28'04.790 | <b>15.965</b>  | <b>4.220</b>  | 5 1'54.033        |
| 23                           | <b>39 ANTTI</b> Rammo          | EST | ALM Motorsport       | ALM Motorsport         | Honda Civic FK7 H70    | TCR    | 10   | 22'29.911 | <b>2 Giri</b>  | <b>2 Giri</b> | 5 1'53.835        |
| 24                           | <b>8 BABUIN</b> Denis          | ITA | Babuin Denis         |                        | Audi RS3 LMS TCR       | TCR    | 10   | 22'30.025 | <b>2 Giri</b>  | <b>0.114</b>  | 6 1'53.685        |
| 25                           | <b>81 DI MARE</b> Sabatino     | ITA | Di Mare Sabatino     | Sc. Vesuvio            | Cupra TCR DSG          | TCDS   | 10   | 22'37.905 | <b>2 Giri</b>  | <b>7.880</b>  | 5 1'55.699        |
| ----- Non Classificati ----- |                                |     |                      |                        |                        |        |      |           |                |               |                   |
| RIT                          | <b>23 VAHTEL</b> Mattias       | EST | ALM Motorsport       | ALM Motorsport         | Honda Civic FK7 H70    | TCR    | 6    | 11'31.079 | <b>6 Giri</b>  |               | 3 <b>1'53.257</b> |
| RIT                          | <b>96 GIACON</b> Steven        | ITA | Giacon Steven        |                        | Audi TCR DSG           | TCDS   | 6    | 12'01.966 | <b>6 Giri</b>  |               | 4 1'56.756        |
| RIT                          | <b>46 BUTTI</b> Marco          | ITA | D-Max Swisse         |                        | Hyundai i30 N TCR      | TCR    | 5    | 9'40.445  | <b>7 Giri</b>  |               | 4 1'53.724        |
| RIT                          | <b>21 GUIDA</b> Nicola         | ITA | Guida Nicola         | Girasole               | Cupra Leon Competicion | TCR    | 5    | 9'58.920  | <b>7 Giri</b>  |               | 2 1'56.299        |
| RIT                          | <b>47 CARMINATI</b> Ettore     | ITA | Carminat Ettore      |                        | Hyundai i30 N TCR      | TCR    | 2    | 4'03.314  | <b>10 Giri</b> |               | 2 1'55.535        |
| NP                           | <b>11 REDUZZI</b> Damiano      | ITA | Reduzzi Damiano      | Trico WRT              | Hyundai i30 N TCR      | TCR    |      |           |                |               |                   |

Partenti: 31 Classificati: 25 Non Classificati: 0 Ritirati: 5 Non Partiti: 1  
 Giro Veloce N. 3 Num. 23 Mattias Vahtel 2 Tempo 1'53.257 Media. 156,038 Km/h

|            |     |       |      |
|------------|-----|-------|------|
| Umidità    | 61% | ARIA  | 22°C |
| Condizioni | DRY | Pista | 29°C |

### Penalty and Infringment

14.12 RED FLAG (14:12.31)  
 17.32 **56 C. BRUSA** Penalizzato di 10 sec con decisione n.18 dei CCSS

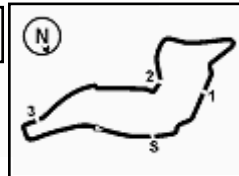
Direttore di Gara : Massimiliano Ghinassi

Direttore di Prova : Gianluca Marotta

08/05/2022 Inizio 13:41 Fine 14:18

Esposta alle: .....





Imola Circuit 4.909 m

**ACI Racing Weekend Imola, 7-8 Maggio 2022**
**TCR Italy - Classifica di Classe Gara 2**
**Classe TCR DSG**

Giri 12 = 58,908 km - Media 126,245 km/h - Tempo di gara 27'59.818

| Num. | Conduttore                 | Naz | Concorrente      | Team        | Auto          | Giri | Tempo     | Dist.         | Rel.          | Giro Veloce       |
|------|----------------------------|-----|------------------|-------------|---------------|------|-----------|---------------|---------------|-------------------|
| 1    | <b>85 MASSARO</b> Rodolfo  | ITA | Massaro Rodolfo  |             | Audi TCR DSG  | 12   | 27'59.818 |               |               | 2 1'56.772        |
| 2    | <b>90 TRENTIN</b> Mauro    | ITA | Trentin Mauro    |             | Audi TCR DSG  | 12   | 28'00.389 | <b>0.571</b>  | <b>0.571</b>  | 4 1'56.426        |
| 3    | <b>81 DI MARE</b> Sabatino | ITA | Di Mare Sabatino | Sc. Vesuvio | Cupra TCR DSG | 10   | 22'37.905 | <b>2 Giri</b> | <b>2 Giri</b> | 5 <b>1'55.699</b> |

**Non Classificati**

|     |                         |     |               |  |              |   |           |               |  |            |
|-----|-------------------------|-----|---------------|--|--------------|---|-----------|---------------|--|------------|
| RIT | <b>96 GIACON</b> Steven | ITA | Giacon Steven |  | Audi TCR DSG | 6 | 12'01.966 | <b>6 Giri</b> |  | 4 1'56.756 |
|-----|-------------------------|-----|---------------|--|--------------|---|-----------|---------------|--|------------|

Partenti: 4 Classificati: 3 Non Classificati: 0 Ritirati: 1 Non Partiti: 0

Giro Veloce N. 5 Num. 81 Sabatino Di Mare Tempo 1'55.699 Media. 152,745 Km/h

**Classe TCR**

Giri 12 = 58,908 km - Media 127,077 km/h - Tempo di gara 27'48.825

| Num. | Conduttore                     | Naz | Concorrente          | Team                   | Auto                   | Giri | Tempo     | Dist.         | Rel.          | Giro Veloce |
|------|--------------------------------|-----|----------------------|------------------------|------------------------|------|-----------|---------------|---------------|-------------|
| 1    | <b>12 FERNÁNDEZ</b> Gil Rubén  | ESP | Auto Club RC2 Valles | Auto Club RC2 Valles   | Audi RS3 LMS TCR       | 12   | 27'48.825 |               |               | 4 1'53.337  |
| 2    | <b>44 IMBERTI</b> Michele      | ITA | Imberti Michele      |                        | Hyundai i30 N TCR      | 12   | 27'49.284 | <b>0.459</b>  | <b>0.459</b>  | 4 1'53.369  |
| 3    | <b>5 BISSA</b> Manuel          | ITA | Bissa Manuel         | MM Motorsport          | Honda Civic FK7 H70    | 12   | 27'49.658 | <b>0.833</b>  | <b>0.374</b>  | 4 1'53.767  |
| 4    | <b>27 VOLT</b> Ruben           | EST | ALM Motorsport       | ALM Motorsport         | Honda Civic FK7 H70    | 12   | 27'50.002 | <b>1.177</b>  | <b>0.344</b>  | 5 1'53.628  |
| 5    | <b>33 TAMBURINI</b> Carlo      | ITA | Tamburini Carlo      | MM Motorsport          | Honda Civic FK7 H70    | 12   | 27'50.595 | <b>1.770</b>  | <b>0.593</b>  | 5 1'53.717  |
| 6    | <b>22 LANGEVELD</b> Niels      | NED | Target               | Target                 | Hyundai Elantra TCR    | 12   | 27'50.752 | <b>1.927</b>  | <b>0.157</b>  | 5 1'53.624  |
| 7    | <b>19 FERNÁNDEZ</b> Gil Felipe | ESP | Auto Club RC2 Valles | Auto Club RC2 Valles   | Cupra Leon Competicion | 12   | 27'51.186 | <b>2.361</b>  | <b>0.434</b>  | 4 1'53.827  |
| 8    | <b>4 TAVANO</b> Salvatore      | ITA | Girasole             | Girasole               | Cupra Leon Competicion | 12   | 27'51.957 | <b>3.132</b>  | <b>0.771</b>  | 3 1'53.476  |
| 9    | <b>61 GHERMANDI</b> Giacomo    | ITA | Lema Racing          |                        | Cupra Leon Competicion | 12   | 27'52.506 | <b>3.681</b>  | <b>0.549</b>  | 4 1'53.336  |
| 10   | <b>77 PUSSIER</b> Sylvain      | FRA | Pussier Sylvain      | SP Competicion         | Cupra Leon Competicion | 12   | 27'53.062 | <b>4.237</b>  | <b>0.556</b>  | 4 1'53.676  |
| 11   | <b>37 LOPEZ BOLOTIN</b> Sergio | VEN | Auto Club RC2 Valles | Auto Club RC2 Valles   | Cupra Leon Competicion | 12   | 27'53.508 | <b>4.683</b>  | <b>0.446</b>  | 4 1'53.776  |
| 12   | <b>66 COLOMBANI</b> Gilles     | FRA | Colombani Gilles     | Team Clairet           | Cupra Leon Competicion | 12   | 27'54.128 | <b>5.303</b>  | <b>0.620</b>  | 4 1'54.213  |
| 13   | <b>20 RAFFAELE</b> Francesca   | ITA | Target               | Target                 | Hyundai i30 N TCR      | 12   | 27'55.295 | <b>6.470</b>  | <b>1.167</b>  | 5 1'54.674  |
| 14   | <b>24 LORENZINI</b> Luca       | ITA | Aggressive Team      | Aggressive Team Italia | Hyundai Elantra TCR    | 12   | 27'55.635 | <b>6.810</b>  | <b>0.340</b>  | 3 1'53.932  |
| 15   | <b>14 IANNOTTA</b> Marco       | ITA | Iannotta Marco       | MM Motorsport          | Honda Civic FK7 H70    | 12   | 27'56.383 | <b>7.558</b>  | <b>0.748</b>  | 4 1'54.444  |
| 16   | <b>18 VENTAJA</b> Stéphane     | FRA | Ventaja Stéphane     | Team Clairet           | Audi RS3 LMS TCR       | 12   | 27'56.636 | <b>7.811</b>  | <b>0.253</b>  | 4 1'54.464  |
| 17   | <b>3 GURRIERI</b> Raffaele     | ITA | Girasole             | Girasole               | Cupra Leon Competicion | 12   | 27'57.512 | <b>8.687</b>  | <b>0.876</b>  | 5 1'54.571  |
| 18   | <b>74 CAPPELLO</b> Edo         | ITA | Capello Edo          | Aggressive Team Italia | Hyundai i30 N TCR      | 12   | 27'57.900 | <b>9.075</b>  | <b>0.388</b>  | 4 1'54.219  |
| 19   | <b>13 ROMANI</b> Emanuele      | ITA | Romani Emanuele      |                        | Hyundai i30 N TCR      | 12   | 28'00.570 | <b>11.745</b> | <b>2.670</b>  | 4 1'56.715  |
| 20P  | <b>56 BRUSA</b> Cesare         | ITA | Target               | Target                 | Hyundai i30 N TCR      | 12   | 28'04.790 | <b>15.965</b> | <b>4.220</b>  | 5 1'54.033  |
| 21   | <b>39 ANTTI</b> Rammo          | EST | ALM Motorsport       | ALM Motorsport         | Honda Civic FK7 H70    | 10   | 22'29.911 | <b>2 Giri</b> | <b>2 Giri</b> | 5 1'53.835  |
| 22   | <b>8 BABUIN</b> Denis          | ITA | Babuin Denis         |                        | Audi RS3 LMS TCR       | 10   | 22'30.025 | <b>2 Giri</b> | <b>0.114</b>  | 6 1'53.685  |

**Non Classificati**

|     |                            |     |                  |                |                        |   |           |                |  |                   |
|-----|----------------------------|-----|------------------|----------------|------------------------|---|-----------|----------------|--|-------------------|
| RIT | <b>23 VAHTEL</b> Mattias   | EST | ALM Motorsport   | ALM Motorsport | Honda Civic FK7 H70    | 6 | 11'31.079 | <b>6 Giri</b>  |  | 3 <b>1'53.257</b> |
| RIT | <b>46 BUTTI</b> Marco      | ITA | D-Max Swisse     |                | Hyundai i30 N TCR      | 5 | 9'40.445  | <b>7 Giri</b>  |  | 4 1'53.724        |
| RIT | <b>21 GUIDA</b> Nicola     | ITA | Guida Nicola     | Girasole       | Cupra Leon Competicion | 5 | 9'58.920  | <b>7 Giri</b>  |  | 2 1'56.299        |
| RIT | <b>47 CARMINATI</b> Ettore | ITA | Carminati Ettore |                | Hyundai i30 N TCR      | 2 | 4'03.314  | <b>10 Giri</b> |  | 2 1'55.535        |
| NP  | <b>11 REDUZZI</b> Damiano  | ITA | Reduzzi Damiano  | Trico WRT      | Hyundai i30 N TCR      |   |           |                |  |                   |

Partenti: 27 Classificati: 22 Non Classificati: 0 Ritirati: 4 Non Partiti: 1

Giro Veloce N. 3 Num. 23 Mattias Vahtel 2 Tempo 1'53.257 Media. 156,038 Km/h

|            |     |       |      |
|------------|-----|-------|------|
| Umidità    | 61% | ARIA  | 22°C |
| Condizioni | DRY | Pista | 29°C |

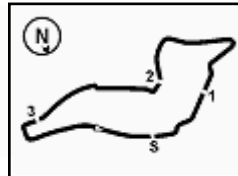
Direttore di Gara : Massimiliano Ghinassi

Direttore di Prova : Gianluca Marotta

08/05/2022 Inizio 13:41 Fine 14:18

Esposta alle: .....





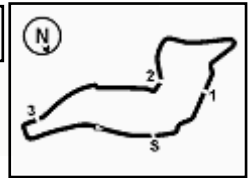
Imola Circuit 4.909 m

**ACI Racing Weekend Imola, 7-8 Maggio 2022**
**TCR Italy - Contagiri Gara 2**

|    |    | Giro |    |    |    |    |    |    |    |    |    |    |  |
|----|----|------|----|----|----|----|----|----|----|----|----|----|--|
|    | 1  | 2    | 3  | 4  | 5  | 6  | 7  | 8  | 9  | 10 | 11 | 12 |  |
| 1  | 12 | 12   | 12 | 12 | 12 | 44 | 44 | 44 | 44 | 12 | 12 | 12 |  |
| 2  | 44 | 44   | 44 | 44 | 44 | 12 | 12 | 12 | 12 | 44 | 44 | 44 |  |
| 3  | 5  | 5    | 5  | 5  | 5  | 5  | 5  | 5  | 5  | 5  | 5  | 5  |  |
| 4  | 33 | 33   | 33 | 33 | 33 | 33 | 33 | 33 | 27 | 27 | 27 | 27 |  |
| 5  | 27 | 27   | 27 | 27 | 27 | 27 | 27 | 27 | 33 | 33 | 33 | 33 |  |
| 6  | 22 | 22   | 22 | 22 | 22 | 22 | 22 | 22 | 22 | 22 | 22 | 22 |  |
| 7  | 19 | 19   | 19 | 19 | 19 | 23 | 19 | 19 | 19 | 19 | 19 | 19 |  |
| 8  | 23 | 23   | 23 | 23 | 23 | 19 | 4  | 4  | 4  | 4  | 4  | 4  |  |
| 9  | 4  | 4    | 4  | 4  | 4  | 4  | 61 | 61 | 61 | 61 | 61 | 61 |  |
| 10 | 61 | 61   | 61 | 61 | 61 | 61 | 77 | 77 | 77 | 77 | 77 | 77 |  |
| 11 | 77 | 46   | 46 | 46 | 46 | 77 | 37 | 37 | 37 | 37 | 37 | 37 |  |
| 12 | 46 | 77   | 77 | 77 | 77 | 37 | 39 | 39 | 39 | 39 | 66 | 66 |  |
| 13 | 37 | 37   | 37 | 37 | 37 | 39 | 8  | 8  | 8  | 8  | 56 | 56 |  |
| 14 | 39 | 39   | 39 | 39 | 39 | 8  | 66 | 66 | 66 | 66 | 20 | 20 |  |
| 15 | 14 | 14   | 14 | 14 | 14 | 66 | 14 | 14 | 14 | 24 | 24 | 24 |  |
| 16 | 66 | 66   | 66 | 66 | 8  | 14 | 24 | 24 | 24 | 56 | 14 | 14 |  |
| 17 | 20 | 20   | 24 | 8  | 66 | 24 | 56 | 56 | 56 | 20 | 18 | 18 |  |
| 18 | 24 | 24   | 20 | 24 | 20 | 74 | 74 | 74 | 74 | 14 | 3  | 3  |  |
| 19 | 47 | 47   | 8  | 20 | 24 | 20 | 20 | 20 | 20 | 18 | 74 | 74 |  |
| 20 | 8  | 8    | 74 | 74 | 74 | 56 | 18 | 18 | 18 | 74 | 85 | 85 |  |
| 21 | 74 | 74   | 56 | 56 | 56 | 18 | 3  | 3  | 3  | 3  | 90 | 90 |  |
| 22 | 21 | 21   | 18 | 18 | 18 | 3  | 85 | 85 | 85 | 85 | 13 | 13 |  |
| 23 | 56 | 56   | 3  | 3  | 3  | 85 | 90 | 90 | 90 | 90 |    |    |  |
| 24 | 18 | 18   | 21 | 21 | 21 | 90 | 13 | 13 | 13 | 13 |    |    |  |
| 25 | 3  | 3    | 85 | 85 | 85 | 13 | 81 | 81 | 81 | 81 |    |    |  |
| 26 | 81 | 85   | 96 | 96 | 96 | 81 |    |    |    |    |    |    |  |
| 27 | 85 | 96   | 90 | 90 | 90 | 96 |    |    |    |    |    |    |  |
| 28 | 96 | 90   | 13 | 13 | 13 |    |    |    |    |    |    |    |  |
| 29 | 90 | 13   | 81 | 81 | 81 |    |    |    |    |    |    |    |  |
| 30 | 13 | 81   |    |    |    |    |    |    |    |    |    |    |  |

| Final Result |                            |         |
|--------------|----------------------------|---------|
| 1            | <b>12 FERNÁNDEZ G.</b>     | Giri 12 |
| 2            | <b>44 IMBERTI M.</b>       | 0.459   |
| 3            | <b>5 BISSA M.</b>          | 0.833   |
| 4            | <b>27 VOLT R.</b>          | 1.177   |
| 5            | <b>33 TAMBURINI C.</b>     | 1.770   |
| 6            | <b>22 LANGEVELD N.</b>     | 1.927   |
| 7            | <b>19 FERNÁNDEZ G.</b>     | 2.361   |
| 8            | <b>4 TAVANO S.</b>         | 3.132   |
| 9            | <b>61 GHERMANDI G.</b>     | 3.681   |
| 10           | <b>77 PUSSIER S.</b>       | 4.237   |
| 11           | <b>37 LOPÉZ BOLOTIN S.</b> | 4.683   |
| 12           | <b>66 COLOMBANI G.</b>     | 5.303   |
| 13           | <b>56 BRUSA C.</b>         | 5.965   |
| 14           | <b>20 RAFFAELE F.</b>      | 6.470   |
| 15           | <b>24 LORENZINI L.</b>     | 6.810   |
| 16           | <b>14 IANNOTTA M.</b>      | 7.558   |
| 17           | <b>18 VENTAJA S.</b>       | 7.811   |
| 18           | <b>3 GURRIERI R.</b>       | 8.687   |
| 19           | <b>74 CAPPELLO E.</b>      | 9.075   |
| 20           | <b>85 MASSARO R.</b>       | 10.993  |
| 21           | <b>90 TRENTIN M.</b>       | 11.564  |
| 22           | <b>13 ROMANI E.</b>        | 11.745  |
| 23           | <b>39 ANTTI R.</b>         | 2 Giri  |
| 24           | <b>8 BABUIN D.</b>         | 2 Giri  |
| 25           | <b>81 DI MARE S.</b>       | 2 Giri  |
| RIT          | <b>23 VAHTEL M.</b>        | 6 Giri  |
| RIT          | <b>96 GIACON S.</b>        | 6 Giri  |
| RIT          | <b>46 BUTTI M.</b>         | 7 Giri  |
| RIT          | <b>21 GUIDA N.</b>         | 7 Giri  |
| RIT          | <b>47 CARMINATI E.</b>     | 10 Giri |
| NP           | <b>11 REDUZZI D.</b>       |         |





Imola Circuit 4.909 m

## ACI Racing Weekend Imola, 7-8 Maggio 2022

### TCR Italy - Best Sectors & Speed Gara 2

**CLASSIFICA**

|     |                         |                        |         |
|-----|-------------------------|------------------------|---------|
| 1   | 12 FERNÁNDEZ Gil Rubén  | Audi RS3 LMS TCR       | Giri 12 |
| 2   | 44 IMBERTI Michele      | Hyundai i30 N TCR      | 0.459   |
| 3   | 5 BISSA Manuel          | Honda Civic FK7 H70    | 0.833   |
| 4   | 27 VOLT Ruben           | Honda Civic FK7 H70    | 1.177   |
| 5   | 33 TAMBURINI Carlo      | Honda Civic FK7 H70    | 1.770   |
| 6   | 22 LANGEVELD Niels      | Hyundai Elantra TCR    | 1.927   |
| 7   | 19 FERNÁNDEZ Gil Felipe | Cupra Leon Competicion | 2.361   |
| 8   | 4 TAVANO Salvatore      | Cupra Leon Competicion | 3.132   |
| 9   | 61 GHERMANDI Giacomo    | Cupra Leon Competicion | 3.681   |
| 10  | 77 PUSSIER Sylvain      | Cupra Leon Competicion | 4.237   |
| 11  | 37 LOPÉZ BOLOTIN Sergio | Cupra Leon Competicion | 4.683   |
| 12  | 66 COLOMBANI Gilles     | Cupra Leon Competicion | 5.303   |
| 13  | 56 BRUSA Cesare         | Hyundai i30 N TCR      | 5.965   |
| 14  | 20 RAFFAELE Francesca   | Hyundai i30 N TCR      | 6.470   |
| 15  | 24 LORENZINI Luca       | Hyundai Elantra TCR    | 6.810   |
| 16  | 14 IANNOTTA Marco       | Honda Civic FK7 H70    | 7.558   |
| 17  | 18 VENTAJA Stéphane     | Audi RS3 LMS TCR       | 7.811   |
| 18  | 3 GURRIERI Raffaele     | Cupra Leon Competicion | 8.687   |
| 19  | 74 CAPPELLO Edo         | Hyundai i30 N TCR      | 9.075   |
| 20  | 85 MASSARO Rodolfo      | Audi TCR DSG           | 10.993  |
| 21  | 90 TRENTIN Mauro        | Audi TCR DSG           | 11.564  |
| 22  | 13 ROMANI Emanuele      | Hyundai i30 N TCR      | 11.745  |
| 23  | 39 ANTTI Rammo          | Honda Civic FK7 H70    | 2 Giri  |
| 24  | 8 BABUIN Denis          | Audi RS3 LMS TCR       | 2 Giri  |
| 25  | 81 DI MARE Sabatino     | Cupra TCR DSG          | 2 Giri  |
| RIT | 23 VAHTEL Mattias       | Honda Civic FK7 H70    | 6 Giri  |
| RIT | 96 GIACON Steven        | Audi TCR DSG           | 6 Giri  |
| RIT | 46 BUTTI Marco          | Hyundai i30 N TCR      | 7 Giri  |
| RIT | 21 GUIDA Nicola         | Cupra Leon Competicion | 7 Giri  |
| RIT | 47 CARMINATI Ettore     | Hyundai i30 N TCR      | 10 Giri |
| NP  | 11 REDUZZI Damiano      | Hyundai i30 N TCR      |         |

**SPEED**

|    |                         |                        |       |
|----|-------------------------|------------------------|-------|
| 1  | 8 BABUIN Denis          | Audi RS3 LMS TCR       | 247,1 |
| 2  | 12 FERNÁNDEZ Gil Rubén  | Audi RS3 LMS TCR       | 245,5 |
| 3  | 37 LOPÉZ BOLOTIN Sergio | Cupra Leon Competicion | 245,5 |
| 4  | 3 GURRIERI Raffaele     | Cupra Leon Competicion | 244,3 |
| 5  | 66 COLOMBANI Gilles     | Cupra Leon Competicion | 244,3 |
| 6  | 77 PUSSIER Sylvain      | Cupra Leon Competicion | 244,3 |
| 7  | 18 VENTAJA Stéphane     | Audi RS3 LMS TCR       | 243,8 |
| 8  | 74 CAPPELLO Edo         | Hyundai i30 N TCR      | 243,8 |
| 9  | 4 TAVANO Salvatore      | Cupra Leon Competicion | 243,2 |
| 10 | 20 RAFFAELE Francesca   | Hyundai i30 N TCR      | 243,2 |
| 11 | 21 GUIDA Nicola         | Cupra Leon Competicion | 243,2 |
| 12 | 56 BRUSA Cesare         | Hyundai i30 N TCR      | 243,2 |
| 13 | 96 GIACON Steven        | Audi TCR DSG           | 243,2 |
| 14 | 61 GHERMANDI Giacomo    | Cupra Leon Competicion | 242,7 |
| 15 | 24 LORENZINI Luca       | Hyundai Elantra TCR    | 242,2 |
| 16 | 47 CARMINATI Ettore     | Hyundai i30 N TCR      | 242,2 |
| 17 | 85 MASSARO Rodolfo      | Audi TCR DSG           | 242,2 |
| 18 | 22 LANGEVELD Niels      | Hyundai Elantra TCR    | 242,2 |
| 19 | 19 FERNÁNDEZ Gil Felipe | Cupra Leon Competicion | 241,6 |
| 20 | 27 VOLT Ruben           | Honda Civic FK7 H70    | 241,6 |
| 21 | 14 IANNOTTA Marco       | Honda Civic FK7 H70    | 240,5 |
| 22 | 39 ANTTI Rammo          | Honda Civic FK7 H70    | 240,5 |
| 23 | 5 BISSA Manuel          | Honda Civic FK7 H70    | 240,0 |
| 24 | 23 VAHTEL Mattias       | Honda Civic FK7 H70    | 240,0 |
| 25 | 33 TAMBURINI Carlo      | Honda Civic FK7 H70    | 238,9 |
| 26 | 90 TRENTIN Mauro        | Audi TCR DSG           | 238,9 |
| 27 | 44 IMBERTI Michele      | Hyundai i30 N TCR      | 238,4 |
| 28 | 81 DI MARE Sabatino     | Cupra TCR DSG          | 238,4 |
| 29 | 46 BUTTI Marco          | Hyundai i30 N TCR      | 237,4 |
| 30 | 13 ROMANI Emanuele      | Hyundai i30 N TCR      | 235,8 |

**SEG. 1**

|    |                         |        |
|----|-------------------------|--------|
| 1  | 61 GHERMANDI Giacomo    | 23.472 |
| 2  | 8 BABUIN Denis          | 23.520 |
| 3  | 23 VAHTEL Mattias       | 23.615 |
| 4  | 66 COLOMBANI Gilles     | 23.625 |
| 5  | 56 BRUSA Cesare         | 23.651 |
| 6  | 39 ANTTI Rammo          | 23.679 |
| 7  | 4 TAVANO Salvatore      | 23.699 |
| 8  | 77 PUSSIER Sylvain      | 23.707 |
| 9  | 22 LANGEVELD Niels      | 23.716 |
| 10 | 27 VOLT Ruben           | 23.719 |
| 11 | 3 GURRIERI Raffaele     | 23.749 |
| 12 | 33 TAMBURINI Carlo      | 23.750 |
| 13 | 37 LOPÉZ BOLOTIN Sergio | 23.757 |
| 14 | 12 FERNÁNDEZ Gil Rubén  | 23.765 |
| 15 | 14 IANNOTTA Marco       | 23.790 |
| 16 | 18 VENTAJA Stéphane     | 23.798 |
| 17 | 44 IMBERTI Michele      | 23.801 |
| 18 | 5 BISSA Manuel          | 23.822 |
| 19 | 20 RAFFAELE Francesca   | 23.907 |
| 20 | 24 LORENZINI Luca       | 23.914 |
| 21 | 74 CAPPELLO Edo         | 23.919 |
| 22 | 96 GIACON Steven        | 23.922 |
| 23 | 19 FERNÁNDEZ Gil Felipe | 23.931 |
| 24 | 46 BUTTI Marco          | 23.935 |
| 25 | 90 TRENTIN Mauro        | 24.113 |
| 26 | 81 DI MARE Sabatino     | 24.159 |
| 27 | 47 CARMINATI Ettore     | 24.177 |
| 28 | 85 MASSARO Rodolfo      | 24.322 |
| 29 | 21 GUIDA Nicola         | 24.380 |
| 30 | 13 ROMANI Emanuele      | 24.448 |

**SEG. 2**

|    |                         |        |
|----|-------------------------|--------|
| 1  | 44 IMBERTI Michele      | 37.092 |
| 2  | 23 VAHTEL Mattias       | 37.101 |
| 3  | 24 LORENZINI Luca       | 37.130 |
| 4  | 46 BUTTI Marco          | 37.147 |
| 5  | 12 FERNÁNDEZ Gil Rubén  | 37.163 |
| 6  | 27 VOLT Ruben           | 37.166 |
| 7  | 19 FERNÁNDEZ Gil Felipe | 37.213 |
| 8  | 33 TAMBURINI Carlo      | 37.231 |
| 9  | 77 PUSSIER Sylvain      | 37.239 |
| 10 | 22 LANGEVELD Niels      | 37.258 |
| 11 | 61 GHERMANDI Giacomo    | 37.271 |
| 12 | 4 TAVANO Salvatore      | 37.278 |
| 13 | 8 BABUIN Denis          | 37.282 |
| 14 | 5 BISSA Manuel          | 37.329 |
| 15 | 74 CAPPELLO Edo         | 37.407 |
| 16 | 56 BRUSA Cesare         | 37.467 |
| 17 | 37 LOPÉZ BOLOTIN Sergio | 37.473 |
| 18 | 20 RAFFAELE Francesca   | 37.476 |
| 19 | 39 ANTTI Rammo          | 37.479 |
| 20 | 66 COLOMBANI Gilles     | 37.530 |
| 21 | 3 GURRIERI Raffaele     | 37.675 |
| 22 | 14 IANNOTTA Marco       | 37.684 |
| 23 | 18 VENTAJA Stéphane     | 37.709 |
| 24 | 81 DI MARE Sabatino     | 37.839 |
| 25 | 47 CARMINATI Ettore     | 37.961 |
| 26 | 85 MASSARO Rodolfo      | 38.128 |
| 27 | 21 GUIDA Nicola         | 38.341 |
| 28 | 96 GIACON Steven        | 38.472 |
| 29 | 90 TRENTIN Mauro        | 38.485 |
| 30 | 13 ROMANI Emanuele      | 38.555 |

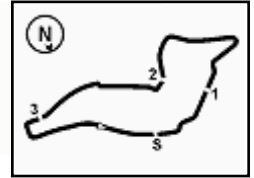
**SEG. 3**

|    |                         |        |
|----|-------------------------|--------|
| 1  | 4 TAVANO Salvatore      | 32.043 |
| 2  | 23 VAHTEL Mattias       | 32.108 |
| 3  | 44 IMBERTI Michele      | 32.142 |
| 4  | 8 BABUIN Denis          | 32.177 |
| 5  | 5 BISSA Manuel          | 32.178 |
| 6  | 12 FERNÁNDEZ Gil Rubén  | 32.210 |
| 7  | 61 GHERMANDI Giacomo    | 32.230 |
| 8  | 46 BUTTI Marco          | 32.254 |
| 9  | 33 TAMBURINI Carlo      | 32.282 |
| 10 | 39 ANTTI Rammo          | 32.296 |
| 11 | 37 LOPÉZ BOLOTIN Sergio | 32.298 |
| 12 | 24 LORENZINI Luca       | 32.311 |
| 13 | 77 PUSSIER Sylvain      | 32.311 |
| 14 | 27 VOLT Ruben           | 32.358 |
| 15 | 56 BRUSA Cesare         | 32.421 |
| 16 | 19 FERNÁNDEZ Gil Felipe | 32.444 |
| 17 | 22 LANGEVELD Niels      | 32.452 |
| 18 | 66 COLOMBANI Gilles     | 32.529 |
| 19 | 3 GURRIERI Raffaele     | 32.530 |
| 20 | 20 RAFFAELE Francesca   | 32.530 |
| 21 | 18 VENTAJA Stéphane     | 32.546 |
| 22 | 14 IANNOTTA Marco       | 32.551 |
| 23 | 74 CAPPELLO Edo         | 32.660 |
| 24 | 47 CARMINATI Ettore     | 32.694 |
| 25 | 21 GUIDA Nicola         | 32.760 |
| 26 | 81 DI MARE Sabatino     | 32.852 |
| 27 | 13 ROMANI Emanuele      | 32.932 |
| 28 | 85 MASSARO Rodolfo      | 33.103 |
| 29 | 90 TRENTIN Mauro        | 33.106 |
| 30 | 96 GIACON Steven        | 33.378 |

**SEG. 4**

|    |                         |        |
|----|-------------------------|--------|
| 1  | 8 BABUIN Denis          | 19.986 |
| 2  | 19 FERNÁNDEZ Gil Felipe | 20.007 |
| 3  | 12 FERNÁNDEZ Gil Rubén  | 20.081 |
| 4  | 44 IMBERTI Michele      | 20.093 |
| 5  | 18 VENTAJA Stéphane     | 20.126 |
| 6  | 74 CAPPELLO Edo         | 20.148 |
| 7  | 3 GURRIERI Raffaele     | 20.150 |
| 8  | 37 LOPÉZ BOLOTIN Sergio | 20.160 |
| 9  | 33 TAMBURINI Carlo      | 20.170 |
| 10 | 5 BISSA Manuel          | 20.178 |
| 11 | 56 BRUSA Cesare         | 20.185 |
| 12 | 22 LANGEVELD Niels      | 20.195 |
| 13 | 4 TAVANO Salvatore      | 20.198 |
| 14 | 61 GHERMANDI Giacomo    | 20.198 |
| 15 | 27 VOLT Ruben           | 20.207 |
| 16 | 46 BUTTI Marco          | 20.214 |
| 17 | 23 VAHTEL Mattias       | 20.243 |
| 18 | 24 LORENZINI Luca       | 20.262 |
| 19 | 66 COLOMBANI Gilles     | 20.267 |
| 20 | 77 PUSSIER Sylvain      | 20.273 |
| 21 | 39 ANTTI Rammo          | 20.308 |
| 22 | 13 ROMANI Emanuele      | 20.330 |
| 23 | 20 RAFFAELE Francesca   | 20.370 |
| 24 | 14 IANNOTTA Marco       | 20.383 |
| 25 | 47 CARMINATI Ettore     | 20.398 |
| 26 | 96 GIACON Steven        | 20.496 |
| 27 | 81 DI MARE Sabatino     | 20.582 |
| 28 | 85 MASSARO Rodolfo      | 20.587 |
| 29 | 21 GUIDA Nicola         | 20.644 |
| 30 | 90 TRENTIN Mauro        | 20.645 |





# ACI Racing Weekend Imola, 7-8 Maggio 2022

## TCR Italy - Analisi Tempi Gara 2

Start at 13:41'00.426

1 / 4

| 3 R. GURRIERI (1'54.571) |               |               |               |               |                 |              |              | 12 G. FERNÁNDEZ (1'53.337) |               |               |               |               |                 |              |              |
|--------------------------|---------------|---------------|---------------|---------------|-----------------|--------------|--------------|----------------------------|---------------|---------------|---------------|---------------|-----------------|--------------|--------------|
| Giro                     | Seg.1         | Seg.2         | Seg.3         | Seg.4         | T. Giro         | km/h         | Local Time   | Giro                       | Seg.1         | Seg.2         | Seg.3         | Seg.4         | T. Giro         | km/h         | Local Time   |
| 1                        |               | 41.898        | 34.494        | 21.039        | 2'10.675        | 180,3        | 13:43'11.101 | 1                          |               | 37.562        | 32.559        | 20.282        | 1'57.703        | 162,2        | 13:42'58.129 |
| 2                        | 24.361        | 38.612        | 32.725        | 20.618        | 1'56.316        | 242,2        | 13:45'07.417 | 2                          | 24.130        | 37.189        | 32.440        | 20.275        | 1'54.034        | 235,3        | 13:44'52.163 |
| 3                        | 24.303        | 38.904        | <b>32.530</b> | 20.366        | 1'56.103        | 243,8        | 13:47'03.520 | 3                          | 23.921        | 37.249        | 32.459        | <b>20.081</b> | 1'53.710        | 238,9        | 13:46'45.873 |
| 4                        | 23.831        | 38.050        | 32.735        | 20.274        | 1'54.890        | 243,8        | 13:48'58.410 | 4                          | <b>23.765</b> | 37.170        | <b>32.210</b> | 20.192        | <b>1'53.337</b> | 240,5        | 13:48'39.210 |
| 5                        | 24.009        | <b>37.675</b> | 32.633        | 20.254        | <b>1'54.571</b> | 243,2        | 13:50'52.981 | 5                          | 23.923        | 37.167        | 32.558        | 20.293        | 1'53.941        | <b>245,5</b> | 13:50'33.151 |
| 6                        | <b>23.749</b> | 38.404        | 32.654        | <b>20.150</b> | <b>1'54.957</b> | <b>244,3</b> | 13:52'47.938 | 6                          | 23.919        | 38.112        | 32.587        | 20.173        | 1'54.791        | 243,2        | 13:52'27.942 |
| 7                        | 24.095        | 47.562        | 44.189        | 27.982        | 2'23.828        | 243,2        | 13:55'11.766 | 7                          | 23.945        | 42.314        | 49.312        | 30.682        | 2'26.253        | 240,0        | 13:54'54.195 |
| 8                        | 49.923        | 1'02.280      | 57.396        | 36.538        | 3'26.137        | 111,6        | 13:58'37.903 | 8                          | 43.454        | 1'07.041      | 58.781        | 36.243        | 3'25.519        | 126,6        | 13:58'19.714 |
| 9                        | 51.238        | 53.240        | 54.403        | 20.908        | 2'59.789        | 80,1         | 14:01'37.692 | 9                          | 48.879        | 57.768        | 57.973        | 23.917        | 3'08.537        | 85,4         | 14:01'28.251 |
| 10                       | 24.267        | 38.332        | 33.228        | 20.955        | 1'56.782        | 241,6        | 14:03'34.474 | 10                         | 23.972        | 37.623        | 32.455        | 20.083        | 1'54.133        | 243,2        | 14:03'22.384 |
| 11                       | 24.131        | 38.253        | 37.575        | 22.081        | 2'02.040        | 234,8        | 14:05'36.514 | 11                         | 23.808        | <b>37.163</b> | 32.433        | 26.610        | 2'00.014        | 242,7        | 14:05'22.398 |
| 12                       | 1'02.116      | 1'04.264      | 54.160        | 20.884        | 3'21.424        | 76,4         | 14:08'57.938 | 12                         | 56.751        | 1'10.852      | 57.883        | 21.367        | 3'26.853        | 106,9        | 14:08'49.251 |
| 13                       | 24.261        | 38.240        | 34.222        | 20.444        | 1'57.167C       | 238,4        | 14:10'55.105 | 13                         | 23.847        | 37.255        | 32.710        | 20.167        | 1'53.979C       | 240,5        | 14:10'43.230 |

Tempo di gara 27'57.512

Tempo di gara 27'48.825

| 4 S. TAVANO (1'53.476) |               |               |               |               |                 |              |              | 13 E. ROMANI (1'56.715) |               |               |               |               |                 |              |              |
|------------------------|---------------|---------------|---------------|---------------|-----------------|--------------|--------------|-------------------------|---------------|---------------|---------------|---------------|-----------------|--------------|--------------|
| Giro                   | Seg.1         | Seg.2         | Seg.3         | Seg.4         | T. Giro         | km/h         | Local Time   | Giro                    | Seg.1         | Seg.2         | Seg.3         | Seg.4         | T. Giro         | km/h         | Local Time   |
| 1                      |               | 39.137        | 32.556        | 20.379        | 2'02.216        | 175,9        | 13:43'02.642 | 1                       |               | 40.904        | 35.264        | 20.743        | 2'12.266        | 169,8        | 13:43'12.692 |
| 2                      | 24.191        | 38.350        | 32.081        | 20.257        | 1'54.879        | 242,2        | 13:44'57.521 | 2                       | 25.369        | 38.764        | 33.393        | 20.614        | 1'58.140        | 229,3        | 13:45'10.832 |
| 3                      | 23.762        | 37.473        | <b>32.043</b> | <b>20.198</b> | <b>1'53.476</b> | 241,6        | 13:46'50.997 | 3                       | 24.667        | 38.977        | 33.226        | <b>20.330</b> | 1'57.200        | 232,8        | 13:47'08.032 |
| 4                      | 23.721        | <b>37.278</b> | 32.454        | 20.317        | 1'53.770        | 241,6        | 13:48'44.767 | 4                       | 24.667        | 38.763        | <b>32.932</b> | <b>20.353</b> | <b>1'56.715</b> | 231,3        | 13:49'04.747 |
| 5                      | <b>23.699</b> | 37.319        | 32.285        | 20.470        | 1'53.773        | 241,6        | 13:50'38.540 | 5                       | <b>24.448</b> | <b>38.555</b> | 33.232        | 20.560        | 1'56.795        | 231,8        | 13:51'01.542 |
| 6                      | 23.740        | 37.440        | 32.427        | 20.353        | 1'53.960        | 241,6        | 13:52'32.500 | 6                       | 24.529        | 40.224        | 33.641        | 20.930        | 1'59.324        | <b>235,8</b> | 13:53'00.866 |
| 7                      | 24.136        | 46.417        | 45.648        | 31.384        | 2'27.585        | <b>243,2</b> | 13:55'00.085 | 7                       | 25.221        | 40.079        | 40.168        | 27.716        | 2'13.184        | 221,8        | 13:55'14.050 |
| 8                      | 45.802        | 1'03.244      | 59.736        | 36.491        | 3'25.273        | 130,4        | 13:58'25.358 | 8                       | 51.311        | 1'01.103      | 59.304        | 34.753        | 3'26.471        | 100,6        | 13:58'40.521 |
| 9                      | 50.624        | 54.681        | 57.193        | 23.123        | 3'05.621        | 90,8         | 14:01'30.979 | 9                       | 52.231        | 52.098        | 54.551        | 20.740        | 2'59.620        | 74,1         | 14:01'40.141 |
| 10                     | 24.263        | 38.265        | 32.607        | 20.328        | 1'55.463        | 240,5        | 14:03'26.442 | 10                      | 24.935        | 38.851        | 33.174        | 20.389        | 1'57.349        | 228,3        | 14:03'37.490 |
| 11                     | 23.895        | 37.909        | 34.818        | 25.856        | 2'02.478        | 241,1        | 14:05'28.920 | 11                      | 24.577        | 39.310        | 38.115        | 24.346        | 2'06.348        | 230,8        | 14:05'43.838 |
| 12                     | 57.813        | 1'08.246      | 56.681        | 20.723        | 3'23.463        | 74,0         | 14:08'52.383 | 12                      | 1'00.422      | 1'02.095      | 53.973        | 20.668        | 3'17.158        | 72,8         | 14:09'00.996 |
| 13                     | 23.969        | 37.573        | 32.482        | 20.334        | 1'54.358C       | 241,1        | 14:10'46.741 | 13                      | 24.830        | 38.426        | 33.344        | 20.494        | 1'57.094C       | 219,5        | 14:10'58.090 |

Tempo di gara 27'51.957

Tempo di gara 28'00.570

| 5 M. BISSA (1'53.767) |               |               |               |               |                 |              |              | 14 M. IANNOTTA (1'54.444) |               |               |               |               |                 |              |              |
|-----------------------|---------------|---------------|---------------|---------------|-----------------|--------------|--------------|---------------------------|---------------|---------------|---------------|---------------|-----------------|--------------|--------------|
| Giro                  | Seg.1         | Seg.2         | Seg.3         | Seg.4         | T. Giro         | km/h         | Local Time   | Giro                      | Seg.1         | Seg.2         | Seg.3         | Seg.4         | T. Giro         | km/h         | Local Time   |
| 1                     |               | 37.624        | 32.396        | 20.278        | 1'58.744        | 162,4        | 13:42'59.170 | 1                         |               | 40.533        | 33.036        | 20.671        | 2'05.590        | 182,4        | 13:43'06.016 |
| 2                     | 24.008        | <b>37.329</b> | 32.706        | 20.182        | 1'54.225        | 236,8        | 13:44'53.395 | 2                         | 24.055        | 38.198        | 32.778        | 20.549        | 1'55.580        | <b>240,5</b> | 13:45'01.596 |
| 3                     | 23.839        | 37.679        | <b>32.178</b> | 20.198        | 1'53.894        | 237,4        | 13:46'47.289 | 3                         | 23.896        | 37.692        | <b>32.551</b> | 20.455        | 1'54.594        | 238,9        | 13:46'56.190 |
| 4                     | 23.882        | 37.385        | 32.322        | <b>20.178</b> | <b>1'53.767</b> | 237,9        | 13:48'41.056 | 4                         | <b>23.790</b> | <b>37.684</b> | 32.587        | <b>20.383</b> | <b>1'54.444</b> | 238,4        | 13:48'50.634 |
| 5                     | 23.850        |               | 20.317        | 1'53.879      | 238,4           | 13:50'34.935 | 5            | 23.863                    | 38.337        | 33.071        | 20.710        | 1'55.981      | 238,4           | 13:50'46.615 |              |
| 6                     | 23.886        | 37.481        | 32.179        | 20.337        | 1'53.883        | 238,9        | 13:52'28.818 | 6                         | 24.628        | 38.912        | 32.866        | 20.574        | 1'56.980        | 236,8        | 13:52'43.595 |
| 7                     | <b>23.822</b> | 42.308        | 49.413        | 30.785        | 2'26.328        | 238,4        | 13:54'55.146 | 7                         | 24.038        | 43.124        | 45.683        | 29.824        | 2'22.669        | 238,9        | 13:55'06.264 |
| 8                     | 44.457        | 1'05.907      | 59.082        | 36.049        | 3'25.495        | 116,3        | 13:58'20.641 | 8                         | 48.601        | 1'02.863      | 57.754        | 35.828        | 3'25.046        | 109,0        | 13:58'31.310 |
| 9                     | 49.180        | 57.205        | 57.977        | 23.936        | 3'08.298        | 77,8         | 14:01'28.939 | 9                         | 51.686        | 54.893        | 55.361        | 21.537        | 3'03.477        | 79,0         | 14:01'34.787 |
| 10                    | 24.154        | 37.691        | 32.496        | 20.301        | 1'54.642        | 238,9        | 14:03'23.581 | 10                        | 24.213        | 40.315        | 33.237        | 20.906        | 1'58.671        | <b>240,5</b> | 14:03'33.458 |
| 11                    | 23.867        | 37.385        | 32.312        | 26.186        | 1'59.750        | <b>240,0</b> | 14:05'23.331 | 11                        | 24.027        | 38.129        | 36.392        | 22.639        | 2'01.187        | 238,4        | 14:05'34.645 |
| 12                    | 57.817        | 1'10.045      | 57.603        | 21.288        | 3'26.753        | 104,4        | 14:08'50.084 | 12                        | 1'01.725      | 1'04.752      | 54.906        | 20.781        | 3'22.164        | 74,7         | 14:08'56.809 |
| 13                    | 24.190        | 37.607        | 32.762        | 20.616        | 1'55.175C       | 238,9        | 14:10'45.259 | 13                        | 24.181        | 38.057        | 33.017        | 20.548        | 1'55.803C       | 238,4        | 14:10'52.612 |

Tempo di gara 27'49.658

Tempo di gara 27'56.383

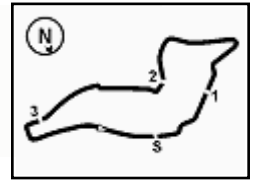
| 8 D. BABUIN (1'53.685) |               |               |               |               |                 |              |              | 18 S. VENTAJA (1'54.464) |               |               |               |               |                 |              |              |
|------------------------|---------------|---------------|---------------|---------------|-----------------|--------------|--------------|--------------------------|---------------|---------------|---------------|---------------|-----------------|--------------|--------------|
| Giro                   | Seg.1         | Seg.2         | Seg.3         | Seg.4         | T. Giro         | km/h         | Local Time   | Giro                     | Seg.1         | Seg.2         | Seg.3         | Seg.4         | T. Giro         | km/h         | Local Time   |
| 1                      |               | 43.440        | 33.869        | 20.786        | 2'07.886        | 168,5        | 13:43'08.312 | 1                        |               | 40.513        | 34.588        | 21.229        | 2'10.393        | 184,3        | 13:43'10.819 |
| 2                      | 24.611        | 37.896        | 32.712        | 20.468        | 1'55.687        | 235,8        | 13:45'03.999 | 2                        | 24.199        | 38.095        | 33.056        | 20.394        | 1'55.744        | 241,1        | 13:45'06.563 |
| 3                      | 24.087        | 38.053        | 32.267        | <b>19.986</b> | 1'54.393        | 246,6        | 13:46'58.392 | 3                        | 24.469        | 38.338        | <b>32.546</b> | 20.247        | 1'55.600        | 238,4        | 13:47'02.163 |
| 4                      | 23.726        | 37.402        | <b>32.177</b> | 20.660        | 1'53.965        | <b>247,1</b> | 13:48'52.357 | 4                        | 23.973        | 37.753        | 32.612        | <b>20.126</b> | <b>1'54.464</b> | 233,3        | 13:48'56.627 |
| 5                      | <b>23.520</b> | 37.493        | 32.824        | 20.770        | 1'54.607        | 246,0        | 13:50'46.964 | 5                        | 24.000        | <b>37.709</b> | 32.837        | 20.322        | 1'54.868        | 235,8        | 13:50'51.495 |
| 6                      | 23.860        | <b>37.282</b> | 32.476        | 20.067        | <b>1'53.685</b> | 242,7        | 13:52'40.649 | 6                        | <b>23.798</b> | 37.796        | 32.742        | 20.324        | 1'54.660        | 239,5        | 13:52'46.155 |
| 7                      | 23.633        | 44.948        | 44.993        | 30.444        | 2'24.018        | 244,9        | 13:55'04.667 | 7                        | 24.218        | 47.198        | 43.948        | 29.374        | 2'24.738        | <b>243,8</b> | 13:55'10.893 |
| 8                      | 48.551        | 1'02.548      | 57.561        | 36.477        | 3'25.137        | 113,4        | 13:58'29.804 | 8                        | 49.114        | 1'01.697      | 58.117        | 36.932        | 3'25.860        | 115,4        | 13:58'36.753 |
| 9                      | 51.789        | 54.303        | 56.066        | 21.833        | 3'03.991        | 83,7         | 14:01'33.795 | 9                        | 50.629        | 54.001        | 54.771        | 20.670        | 3'00.071        | 82,2         | 14:01'36.824 |
| 10                     | 24.315        | 38.843        | 32.983        | 20.515        | 1'56.656        | 236,3        | 14:03'30.451 | 10                       | 24.418        | 38.476        | 33.260        | 20.933        | 1'57.087        | 228,8        | 14:03'33.911 |

Tempo di gara 22'30.025

08/05/2022

P = Box In/Out - C = Tempo Invalidato





# ACI Racing Weekend Imola, 7-8 Maggio 2022

## TCR Italy - Analisi Tempi Gara 2

Start at 13:41'00.426

Imola Circuit 4.909 m

**2 / 4**

Tempo di gara 27'56.636

| 19 G. FERNÁNDEZ (1'53.827) |               |               |               |               |                 |              |              |
|----------------------------|---------------|---------------|---------------|---------------|-----------------|--------------|--------------|
| Giro                       | Seg.1         | Seg.2         | Seg.3         | Seg.4         | T. Giro         | km/h         | Local Time   |
| 1                          |               | 37.904        | 32.642        | 20.154        | 2'00.401        | 170,9        | 13:43'00.827 |
| 2                          | 24.078        | 37.587        | 32.591        | <b>20.007</b> | 1'54.263        | 233,8        | 13:44'55.090 |
| 3                          | 23.941        | 37.225        | 32.656        | 20.098        | 1'53.920        | <b>241,6</b> | 13:46'49.010 |
| 4                          | <b>23.931</b> | <b>37.213</b> | 32.460        | 20.223        | <b>1'53.827</b> | <b>241,6</b> | 13:48'42.837 |
| 5                          | 23.988        | 37.388        | <b>32.444</b> | 20.222        | 1'54.042        | 241,1        | 13:50'36.879 |
| 6                          | 23.954        | 38.282        | 32.544        | 20.385        | 1'55.165        | 240,5        | 13:52'32.044 |
| 7                          | 24.068        | 42.455        | 48.581        | 32.098        | 2'27.202        | 240,5        | 13:54'59.246 |
| 8                          | 45.139        | 1'03.963      | 59.373        | 36.735        | 3'25.210        | 127,1        | 13:58'24.456 |
| 9                          | 48.385        | 57.015        | 57.168        | 23.364        | 3'05.932        | 85,2         | 14:01'30.388 |
| 10                         | 24.355        | 37.665        | 32.918        | 20.174        | 1'55.112        | 239,5        | 14:03'25.500 |
| 11                         | 24.092        | 37.592        | 34.904        | 25.301        | 2'01.889        | 240,0        | 14:05'27.389 |
| 12                         | 57.845        | 1'08.918      | 56.632        | 20.828        | 3'24.223        | 92,2         | 14:08'51.612 |
| 13                         | 24.192        | 37.716        | 32.544        | 20.422        | 1'54.874C       | 229,3        | 14:10'46.486 |

Tempo di gara 27'51.186

| 20 F. RAFFAELE (1'54.674) |               |               |               |               |                 |              |              |
|---------------------------|---------------|---------------|---------------|---------------|-----------------|--------------|--------------|
| Giro                      | Seg.1         | Seg.2         | Seg.3         | Seg.4         | T. Giro         | km/h         | Local Time   |
| 1                         |               | 40.394        | 33.597        | 20.488        | 2'06.354        | 178,2        | 13:43'06.780 |
| 2                         | 24.285        | 38.061        | 33.150        | 20.491        | 1'55.987        | 237,4        | 13:45'02.767 |
| 3                         | 24.094        | 38.133        | 32.677        | <b>20.370</b> | 1'55.274        | 239,5        | 13:46'58.041 |
| 4                         | 24.385        | 37.755        | 32.534        | 20.413        | 1'55.087        | 236,8        | 13:48'53.128 |
| 5                         | 23.971        | <b>37.476</b> | <b>32.530</b> | 20.697        | <b>1'54.674</b> | 239,5        | 13:50'47.802 |
| 6                         | <b>23.907</b> | 39.005        | 33.921        | 20.473        | 1'57.306        | 241,6        | 13:52'45.108 |
| 7                         | 25.226        | 46.622        | 43.796        | 29.111        | 2'24.755        | <b>243,2</b> | 13:55'09.863 |
| 8                         | 48.955        | 1'01.955      | 58.395        | 36.658        | 3'25.963        | 115,6        | 13:58'35.826 |
| 9                         | 50.699        | 54.100        | 54.946        | 20.874        | 3'00.619        | 79,8         | 14:01'36.445 |
| 10                        | 24.329        | 38.049        | 32.928        | 20.578        | 1'55.884        | 235,8        | 14:03'32.329 |
| 11                        | 24.091        | 37.786        | 34.443        | 24.236        | 2'00.556        | 241,6        | 14:05'32.885 |
| 12                        | 1'00.143      | 1'06.612      | 55.318        | 20.763        | 3'22.836        | 79,6         | 14:08'55.721 |
| 13                        | 24.243        | 37.905        | 32.649        | 20.852        | 1'55.649C       | 240,0        | 14:10'51.370 |

Tempo di gara 27'55.295

| 21 N. GUIDA (1'56.299) |               |               |               |               |                 |              |              |
|------------------------|---------------|---------------|---------------|---------------|-----------------|--------------|--------------|
| Giro                   | Seg.1         | Seg.2         | Seg.3         | Seg.4         | T. Giro         | km/h         | Local Time   |
| 1                      |               | 40.842        | 34.630        | 21.081        | 2'09.318        | 186,9        | 13:43'09.744 |
| 2                      | 24.388        | <b>38.341</b> | 32.911        | 20.659        | <b>1'56.299</b> | <b>243,2</b> | 13:45'06.043 |
| 3                      | <b>24.380</b> | 40.671        | 33.101        | 20.803        | 1'58.955        | 241,1        | 13:47'04.998 |
| 4                      | 24.438        | 38.666        | 33.062        | 20.822        | 1'56.988        | 241,6        | 13:49'01.986 |
| 5                      | 24.682        | 39.274        | <b>32.760</b> | <b>20.644</b> | 1'57.360        | 236,8        | 13:50'59.346 |

Tempo di gara 9'58.920

| 22 N. LANGEVELD (1'53.624) |               |               |               |               |                 |              |              |
|----------------------------|---------------|---------------|---------------|---------------|-----------------|--------------|--------------|
| Giro                       | Seg.1         | Seg.2         | Seg.3         | Seg.4         | T. Giro         | km/h         | Local Time   |
| 1                          |               | 37.853        | 32.727        | 20.330        | 2'00.248        | 168,2        | 13:43'00.674 |
| 2                          | 23.830        | 37.304        | 32.495        | 20.235        | 1'53.864        | 241,6        | 13:44'54.538 |
| 3                          | 23.828        | 37.412        | 32.581        | 20.234        | 1'54.055        | 240,0        | 13:46'48.593 |
| 4                          | <b>23.716</b> | 37.373        | 32.634        | 20.232        | 1'53.955        | 240,0        | 13:48'42.548 |
| 5                          | 23.719        | <b>37.258</b> | <b>32.452</b> | <b>20.195</b> | <b>1'53.624</b> | 240,5        | 13:50'36.172 |
| 6                          | 23.730        | 37.464        | 32.602        | 20.334        | 1'54.130        | 240,0        | 13:52'30.302 |
| 7                          | 23.894        | 42.779        | 49.111        | 31.526        | 2'27.310        | 240,0        | 13:54'57.612 |
| 8                          | 44.193        | 1'05.545      | 59.046        | 36.331        | 3'25.115        | 103,5        | 13:58'22.727 |
| 9                          | 49.054        | 57.014        | 57.697        | 23.600        | 3'07.365        | 74,5         | 14:01'30.092 |
| 10                         | 24.218        | 37.841        | 32.784        | 20.407        | 1'55.250        | 237,4        | 14:03'25.342 |
| 11                         | 23.899        | 37.501        | 33.813        | 25.181        | 2'00.394        | <b>242,2</b> | 14:05'25.736 |
| 12                         | 58.260        | 1'09.128      | 57.053        | 21.001        | 3'25.442        | 98,5         | 14:08'51.178 |
| 13                         | 24.280        | 37.718        | 32.559        | 20.432        | 1'54.989C       | 238,9        | 14:10'46.167 |

Tempo di gara 27'50.752

| 23 M. VAHTEL (1'53.257) |        |               |               |        |                 |       |              |
|-------------------------|--------|---------------|---------------|--------|-----------------|-------|--------------|
| Giro                    | Seg.1  | Seg.2         | Seg.3         | Seg.4  | T. Giro         | km/h  | Local Time   |
| 1                       |        | 38.987        | 32.510        | 20.529 | 2'01.948        | 174,2 | 13:43'02.374 |
| 2                       | 24.242 | 37.585        | 32.267        | 20.409 | 1'54.503        | 238,9 | 13:44'56.877 |
| 3                       | 23.794 | <b>37.101</b> | <b>32.108</b> | 20.254 | <b>1'53.257</b> | 235,8 | 13:46'50.134 |

Tempo di gara 27'56.636

| 24 L. LORENZINI (1'53.932) |               |               |               |               |                 |              |              |
|----------------------------|---------------|---------------|---------------|---------------|-----------------|--------------|--------------|
| Giro                       | Seg.1         | Seg.2         | Seg.3         | Seg.4         | T. Giro         | km/h         | Local Time   |
| 1                          |               | 40.408        | 34.045        | 21.011        | 2'07.566        | 181,2        | 13:43'07.992 |
| 2                          | 24.389        | <b>37.130</b> | 33.110        | 20.469        | 1'55.098        | 237,4        | 13:45'03.090 |
| 3                          | 24.080        | 37.279        | <b>32.311</b> | <b>20.262</b> | <b>1'53.932</b> | 241,6        | 13:46'57.022 |
| 4                          | 24.033        | 37.395        | 33.045        | 21.097        | 1'55.570        | <b>242,2</b> | 13:48'52.592 |
| 5                          | <b>23.914</b> | 37.331        | 32.715        | 21.506        | 1'55.466        | 240,5        | 13:50'48.058 |
| 6                          | 23.940        | 38.585        | 32.756        | 20.560        | 1'55.841        | <b>242,2</b> | 13:52'43.899 |
| 7                          | 24.137        | 45.669        | 43.598        | 30.029        | 2'23.433        | 241,1        | 13:55'07.332 |
| 8                          | 48.731        | 1'02.164      | 58.001        | 36.274        | 3'25.170        | 112,3        | 13:58'32.502 |
| 9                          | 51.171        | 54.844        | 55.269        | 21.377        | 3'02.661        | 73,2         | 14:01'35.163 |
| 10                         | 24.117        | 38.213        | 33.083        | 20.828        | 1'56.241        | 241,6        | 14:03'31.404 |
| 11                         | 24.216        | 38.925        | 36.565        | 22.883        | 2'02.589        | 241,1        | 14:05'33.993 |
| 12                         | 1'00.897      | 1'05.517      | 54.935        | 20.719        | 3'22.068        | 74,9         | 14:08'56.061 |
| 13                         | 24.178        | 37.908        | 32.832        | 20.728        | 1'55.646C       | 240,5        | 14:10'51.707 |

Tempo di gara 11'31.079

| 27 R. VOLT (1'53.628) |               |               |               |               |                 |              |              |
|-----------------------|---------------|---------------|---------------|---------------|-----------------|--------------|--------------|
| Giro                  | Seg.1         | Seg.2         | Seg.3         | Seg.4         | T. Giro         | km/h         | Local Time   |
| 1                     |               | 37.901        | 32.767        | 20.335        | 1'59.969        | 170,3        | 13:43'00.395 |
| 2                     | 23.738        | 37.318        | 32.435        | 20.327        | 1'53.818        | 239,5        | 13:44'54.213 |
| 3                     | 23.851        | 37.445        | 32.420        | <b>20.207</b> | 1'53.923        | 239,5        | 13:46'48.136 |
| 4                     | 23.807        | 37.410        | <b>32.358</b> | 20.270        | 1'53.845        | 239,5        | 13:48'41.981 |
| 5                     | 23.812        | <b>37.166</b> | 32.430        | 20.220        | <b>1'53.628</b> | 240,5        | 13:50'35.609 |
| 6                     | 23.901        | 37.376        | 32.721        | 20.328        | 1'54.326        | <b>241,6</b> | 13:52'29.935 |
| 7                     | <b>23.719</b> | 42.791        | 49.106        | 31.359        | 2'26.975        | 240,0        | 13:54'56.910 |
| 8                     | 44.089        | 1'05.678      | 58.888        | 36.401        | 3'25.056        | 115,1        | 13:58'21.966 |
| 9                     | 48.899        | 57.293        | 57.665        | 23.943        | 3'07.800        | 66,3         | 14:01'29.766 |
| 10                    | 24.062        | 37.681        | 32.426        | 20.415        | 1'54.584        | 240,5        | 14:03'24.350 |
| 11                    | 23.805        | 37.267        | 33.147        | 25.582        | 1'59.801        | 238,9        | 14:05'24.151 |
| 12                    | 57.955        | 1'09.636      | 57.448        | 21.238        | 3'26.277        | 102,5        | 14:08'50.428 |
| 13                    | 23.995        | 37.701        | 32.649        | 20.876        | 1'55.221C       | 238,9        | 14:10'45.649 |

Tempo di gara 27'55.635

| 33 C. TAMBURINI (1'53.717) |               |               |               |               |                 |              |              |
|----------------------------|---------------|---------------|---------------|---------------|-----------------|--------------|--------------|
| Giro                       | Seg.1         | Seg.2         | Seg.3         | Seg.4         | T. Giro         | km/h         | Local Time   |
| 1                          |               | 37.884        | 32.695        | 20.303        | 1'59.635        | 161,7        | 13:43'00.061 |
| 2                          | 23.851        | 37.264        | 32.441        | 20.261        | 1'53.817        | 236,3        | 13:44'53.878 |
| 3                          | 23.931        | 37.444        | <b>32.282</b> | <b>20.170</b> | 1'53.827        | 236,8        | 13:46'47.705 |
| 4                          | 23.793        | 37.608        | 32.295        | 20.297        | 1'53.993        | 237,9        | 13:48'41.698 |
| 5                          | <b>23.750</b> | <b>37.231</b> | 32.389        | 20.347        | <b>1'53.717</b> | 237,4        | 13:50'35.415 |
| 6                          | 23.893        | 37.387        | 32.590        | 20.258        | 1'54.128        | 238,4        | 13:52'29.543 |
| 7                          | 23.793        | 42.702        | 49.103        | 31.235        | 2'26.833        | 237,4        | 13:54'56.376 |
| 8                          | 43.624        | 1'06.076      | 58.880        | 36.087        | 3'24.667        | 118,4        | 13:58'21.043 |
| 9                          | 49.110        | 57.460        | 57.770        | 24.423        | 3'08.763        | 71,1         | 14:01'29.806 |
| 10                         | 24.250        | 37.856        | 32.595        | 20.362        | 1'55.063        | 235,8        | 14:03'24.869 |
| 11                         | 23.941        | 37.328        | 33.143        | 25.762        | 2'00.174        | <b>238,9</b> | 14:05'25.043 |
| 12                         | 57.765        | 1'09.708      | 57.119        | 21.386        | 3'25.978        | 101,8        | 14:08'51.021 |
| 13                         | 24.142        | 37.639        | 32.433        | 20.787        | 1'55.001C       | 237,4        | 14:10'46.022 |

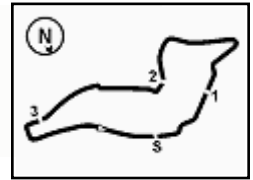
Tempo di gara 27'50.595

| 37 S. LOPÉZ BOLOTIN (1'53.776) |               |               |               |               |                 |              |              |
|--------------------------------|---------------|---------------|---------------|---------------|-----------------|--------------|--------------|
| Giro                           | Seg.1         | Seg.2         | Seg.3         | Seg.4         | T. Giro         | km/h         | Local Time   |
| 1                              |               | 39.789        | 32.693        | 21.119        | 2'04.516        | 180,0        | 13:43'04.942 |
| 2                              | 24.489        | 37.655        | 32.591        | 20.377        | 1'55.112        | 243,8        | 13:45'00.054 |
| 3                              | 24.282        | 37.688        | 32.503        | 20.271        | 1'54.744        | 218,6        | 13:46'54.798 |
| 4                              | <b>23.757</b> | <b>37.473</b> | 32.386        | <b>20.160</b> | <b>1'53.776</b> | 244,3        | 13:48'48.574 |
| 5                              | 23.767        | 37.506        | <b>32.298</b> | 20.219        | 1'53.790        | 243,8        | 13:50'42.364 |
| 6                              | 23.853        | 37.666        | 32.435        | 20.346        | 1'54.300        | <b>245,5</b> | 13:52'36.664 |
| 7                              | 23.922        | 46.586        | 44.455        | 30.685        | 2'25.648        | 242,7        | 13:55'02.312 |
| 8                              | 46.584        | 1'03.327      | 58.913        | 36.202        | 3'25.026        | 117,9        | 13:58'27.338 |
| 9                              | 52.064        | 54.304        | 56.376        | 22.583        | 3'05.327        | 81,9         | 14:01'32.665 |

08/05/2022

P = Box In/Out - C = Tempo Invalidato





## ACI Racing Weekend Imola, 7-8 Maggio 2022

### TCR Italy - Analisi Tempi Gara 2

Start at 13:41'00.426

|    |        |          |        |        |           |       |              |
|----|--------|----------|--------|--------|-----------|-------|--------------|
| 10 | 24.028 | 37.744   | 33.072 | 20.276 | 1'55.120  | 241,1 | 14:03'27.785 |
| 11 | 23.963 | 37.630   | 36.391 | 25.147 | 2'03.131  | 243,2 | 14:05'30.916 |
| 12 | 59.758 | 1'06.720 | 55.780 | 20.760 | 3'23.018  | 85,8  | 14:08'53.934 |
| 13 | 23.879 | 37.756   | 31.979 | 20.250 | 1'53.864C | 241,6 | 14:10'47.798 |

Tempo di gara 27'53.508

| 39 R. ANTTI (1'53.835) |               |               |               |               |                 |       |              |
|------------------------|---------------|---------------|---------------|---------------|-----------------|-------|--------------|
| Giro                   | Seg.1         | Seg.2         | Seg.3         | Seg.4         | T. Giro         | km/h  | Local Time   |
| 1                      |               | 41.295        | 32.888        | 20.749        | 2'05.049        | 170,6 | 13:43'05.475 |
| 2                      | 24.169        | 38.103        | 32.674        | 20.441        | 1'55.387        | 238,4 | 13:45'00.862 |
| 3                      | 23.818        | 37.816        | 32.516        | 20.357        | 1'54.507        | 238,4 | 13:46'55.369 |
| 4                      | <b>23.679</b> | 37.525        | 32.459        | <b>20.308</b> | 1'53.971        | 239,5 | 13:48'49.340 |
| 5                      | 23.682        | <b>37.479</b> | <b>32.296</b> | 20.378        | <b>1'53.835</b> | 238,9 | 13:50'43.175 |
| 6                      | 23.751        | 37.646        | 32.516        | 20.467        | 1'54.380        | 238,9 | 13:52'37.555 |
| 7                      | 23.808        | 46.921        | 44.275        | 30.696        | 2'25.700        | 236,8 | 13:55'03.255 |
| 8                      | 47.554        | 1'02.674      | 58.800        | 36.480        | 3'25.508        | 118,3 | 13:58'28.763 |
| 9                      | 51.811        | 54.346        | 56.226        | 22.527        | 3'04.910        | 87,8  | 14:01'33.673 |
| 10                     | 24.283        | 38.702        | 33.056        | 20.623        | 1'56.664        | 239,5 | 14:03'30.337 |

Tempo di gara 22'29.911

| 44 M. IMBERTI (1'53.369) |               |               |               |               |                 |              |              |
|--------------------------|---------------|---------------|---------------|---------------|-----------------|--------------|--------------|
| Giro                     | Seg.1         | Seg.2         | Seg.3         | Seg.4         | T. Giro         | km/h         | Local Time   |
| 1                        |               | 37.383        | 32.326        | 20.276        | 1'58.117        | 163,4        | 13:42'58.543 |
| 2                        | 24.109        | 37.221        | 32.418        | 20.365        | 1'54.113        | 237,4        | 13:44'52.656 |
| 3                        | 23.855        | 37.170        | 32.485        | 20.146        | 1'53.656        | <b>238,4</b> | 13:46'46.312 |
| 4                        | <b>23.801</b> | 37.333        | <b>32.142</b> | <b>20.093</b> | <b>1'53.369</b> | 237,4        | 13:48'39.681 |
| 5                        | 23.804        | 37.157        | 32.639        | 20.264        | 1'53.864        | 236,8        | 13:50'33.545 |
| 6                        | 23.897        | 37.564        | 32.373        | 20.224        | 1'54.058        | 237,9        | 13:52'27.603 |
| 7                        | 23.959        | 41.884        | 48.440        | 30.866        | 2'25.149        | 235,3        | 13:54'52.752 |
| 8                        | 44.101        | 1'06.670      | 58.772        | 36.505        | 3'26.048        | 130,3        | 13:58'18.800 |
| 9                        | 49.388        | 57.078        | 58.809        | 23.901        | 3'09.176        | 87,0         | 14:01'27.976 |
| 10                       | 24.495        | 37.792        | 32.463        | 20.245        | 1'54.995        | 230,8        | 14:03'22.971 |
| 11                       | 23.819        | <b>37.092</b> | 32.293        | 26.683        | 1'59.887        | 237,4        | 14:05'22.858 |
| 12                       | 57.295        | 1'10.452      | 57.817        | 21.288        | 3'26.852        | 108,9        | 14:08'49.710 |
| 13                       | 24.218        | 37.329        | 32.267        | 20.177        | 1'53.991C       | 234,3        | 14:10'43.701 |

Tempo di gara 27'49.284

| 46 M. BUTTI (1'53.724) |               |               |               |               |                 |              |              |
|------------------------|---------------|---------------|---------------|---------------|-----------------|--------------|--------------|
| Giro                   | Seg.1         | Seg.2         | Seg.3         | Seg.4         | T. Giro         | km/h         | Local Time   |
| 1                      |               | 39.896        | 32.658        | 20.548        | 2'04.270        | 181,5        | 13:43'04.696 |
| 2                      | 24.214        | 37.260        | 32.645        | 20.586        | 1'54.705        | <b>237,4</b> | 13:44'59.401 |
| 3                      | 24.095        | <b>37.147</b> | 32.327        | 20.215        | 1'53.784        | 235,3        | 13:46'53.185 |
| 4                      | 24.050        | 37.206        | <b>32.254</b> | <b>20.214</b> | <b>1'53.724</b> | <b>237,4</b> | 13:48'46.909 |
| 5                      | <b>23.935</b> | 37.477        | 32.317        | 20.233        | 1'53.962        | 236,8        | 13:50'40.871 |

Tempo di gara 9'40.445

| 47 E. CARMINATI (1'55.535) |        |               |               |               |                 |       |              |
|----------------------------|--------|---------------|---------------|---------------|-----------------|-------|--------------|
| Giro                       | Seg.1  | Seg.2         | Seg.3         | Seg.4         | T. Giro         | km/h  | Local Time   |
| 1                          |        | 39.733        | 34.187        | 20.960        | 2'07.779        | 190,5 | 13:43'08.205 |
| 2                          | 24.482 | <b>37.961</b> | <b>32.694</b> | <b>20.398</b> | <b>1'55.535</b> | 241,6 | 13:45'03.740 |

Tempo di gara 4'03.314

| 56 C. BRUSA (1'54.033) |               |               |               |               |                 |              |              |
|------------------------|---------------|---------------|---------------|---------------|-----------------|--------------|--------------|
| Giro                   | Seg.1         | Seg.2         | Seg.3         | Seg.4         | T. Giro         | km/h         | Local Time   |
| 1                      |               | 40.239        | 34.608        | 20.789        | 2'09.405        | 192,9        | 13:43'09.831 |
| 2                      | 24.409        | 38.425        | 32.933        | 20.657        | 1'56.424        | 240,0        | 13:45'06.255 |
| 3                      | 24.238        | 38.257        | 32.599        | 20.385        | 1'55.479        | 240,0        | 13:47'01.734 |
| 4                      | 23.686        | 37.816        | 32.638        | 20.283        | 1'54.423        | 236,3        | 13:48'56.157 |
| 5                      | 23.782        | <b>37.467</b> | <b>32.421</b> | 20.363        | <b>1'54.033</b> | 236,8        | 13:50'50.190 |
| 6                      | <b>23.651</b> | 37.703        | 33.372        | 20.321        | 1'55.047        | 238,9        | 13:52'45.237 |
| 7                      | 24.034        | 46.236        | 42.896        | 29.837        | 2'23.003        | 241,6        | 13:55'08.240 |
| 8                      | 48.456        | 1'02.703      | 57.809        | 36.204        | 3'25.172        | 105,6        | 13:58'33.412 |
| 9                      | 51.008        | 54.897        | 55.362        | 20.963        | 3'02.230        | 74,7         | 14:01'35.642 |
| 10                     | 24.024        | 38.729        | 33.101        | <b>20.185</b> | 1'56.039        | 239,5        | 14:03'31.681 |
| 11                     | 24.179        | 38.048        | 34.109        | 24.352        | 2'00.688        | <b>243,2</b> | 14:05'32.369 |
| 12                     | 59.841        | 1'06.639      | 55.618        | 20.749        | 3'22.847        | 83,7         | 14:08'55.216 |
| 13                     | 23.945        | 37.858        | 32.514        | 20.363        | 1'54.680C       | 238,4        | 14:10'49.896 |

| 61 G. GHERMANDI (1'53.336) |               |               |               |               |                 |              |              |
|----------------------------|---------------|---------------|---------------|---------------|-----------------|--------------|--------------|
| Giro                       | Seg.1         | Seg.2         | Seg.3         | Seg.4         | T. Giro         | km/h         | Local Time   |
| 1                          |               | 39.300        | 32.574        | 20.404        | 2'02.584        |              | 13:43'03.010 |
| 2                          | 24.094        | 38.438        | 32.374        | 20.319        | 1'55.225        | 240,0        | 13:44'58.235 |
| 3                          | 23.889        | 37.548        | 32.274        | 20.218        | 1'53.929        |              | 13:46'52.164 |
| 4                          | 23.635        | <b>37.271</b> | 32.232        | <b>20.198</b> | <b>1'53.336</b> | 237,9        | 13:48'45.500 |
| 5                          | <b>23.472</b> | 37.521        | <b>32.230</b> | 20.257        | 1'53.480        |              | 13:50'38.980 |
| 6                          | 23.525        | 37.637        | 32.667        | 20.349        | 1'54.178        | <b>242,7</b> | 13:52'33.158 |
| 7                          | 23.662        | 47.772        | 45.038        | 30.921        | 2'27.393        | 238,9        | 13:55'00.551 |
| 8                          | 46.443        | 1'03.234      | 59.413        | 36.214        | 3'25.304        | 121,8        | 13:58'25.855 |
| 9                          | 51.120        | 55.112        | 56.556        | 22.920        | 3'05.708        | 84,9         | 14:01'31.563 |
| 10                         | 23.835        | 38.317        | 32.969        | 20.328        | 1'55.449        | 238,4        | 14:03'27.012 |
| 11                         | 23.567        | 37.995        | 35.828        | 25.366        | 2'02.756        | 238,4        | 14:05'29.768 |
| 12                         | 58.443        | 1'07.928      | 56.008        | 20.785        | 3'23.164        | 77,4         | 14:08'52.932 |
| 13                         | 23.726        | 37.926        | 32.383        | 20.506        | 1'54.541C       | 240,5        | 14:10'47.473 |

Tempo di gara 27'52.506

| 66 G. COLOMBANI (1'54.213) |               |               |               |               |                 |              |              |
|----------------------------|---------------|---------------|---------------|---------------|-----------------|--------------|--------------|
| Giro                       | Seg.1         | Seg.2         | Seg.3         | Seg.4         | T. Giro         | km/h         | Local Time   |
| 1                          |               | 40.455        | 33.161        | 20.423        | 2'05.676        | 187,8        | 13:43'06.102 |
| 2                          | 24.314        | 38.496        | 32.896        | 20.301        | 1'56.007        | 234,3        | 13:45'02.109 |
| 3                          | 23.920        | <b>37.530</b> | 32.788        | 20.440        | 1'54.678        | 235,3        | 13:46'56.787 |
| 4                          | 23.765        | 37.652        | <b>32.529</b> | <b>20.267</b> | <b>1'54.213</b> | <b>244,3</b> | 13:48'51.000 |
| 5                          | 23.787        | 38.362        | 32.931        | 21.345        | 1'56.425        | 238,9        | 13:50'47.425 |
| 6                          | 24.074        | 38.056        | 32.560        | 20.469        | 1'55.159        | 243,2        | 13:52'42.584 |
| 7                          | <b>23.625</b> | 43.782        | 45.400        | 29.962        | 2'22.769        | 243,2        | 13:55'05.353 |
| 8                          | 48.618        | 1'02.535      | 57.792        | 36.185        | 3'25.130        | 114,8        | 13:58'30.483 |
| 9                          | 51.700        | 54.521        | 55.807        | 21.966        | 3'03.994        | 84,5         | 14:01'34.477 |
| 10                         | 24.107        | 38.638        | 32.876        | 20.865        | 1'56.486        | 238,4        | 14:03'30.963 |
| 11                         | 24.218        | 38.058        | 33.948        | 24.247        | 2'00.471        | 241,6        | 14:05'31.434 |
| 12                         | 1'00.226      | 1'06.416      | 55.559        | 20.919        | 3'23.120        | 81,2         | 14:08'54.554 |
| 13                         | 23.780        | 38.172        | 32.542        | 20.484        | 1'54.978C       | 234,3        | 14:10'49.532 |

Tempo di gara 27'54.128

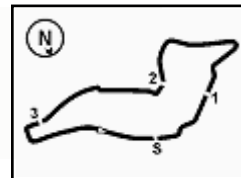
| 74 E. CAPPELLO (1'54.219) |               |               |               |               |                 |              |              |
|---------------------------|---------------|---------------|---------------|---------------|-----------------|--------------|--------------|
| Giro                      | Seg.1         | Seg.2         | Seg.3         | Seg.4         | T. Giro         | km/h         | Local Time   |
| 1                         |               | 39.940        | 33.579        | 20.774        | 2'08.126        | 192,2        | 13:43'08.552 |
| 2                         | 24.562        | 38.056        | 33.576        | 20.151        | 1'56.345        | <b>243,8</b> | 13:45'04.897 |
| 3                         | 23.963        | 38.152        | 32.704        | 20.183        | 1'55.002        | 238,9        | 13:46'59.899 |
| 4                         | 23.959        | <b>37.407</b> | 32.705        | <b>20.148</b> | <b>1'54.219</b> | 238,4        | 13:48'54.118 |
| 5                         | <b>23.919</b> | 37.433        | <b>32.660</b> | 20.380        | 1'54.392        | 240,0        | 13:50'48.510 |
| 6                         | 24.149        | 38.369        | 33.243        | 20.386        | 1'56.147        | 240,5        | 13:52'44.657 |
| 7                         | 24.542        | 47.525        | 43.579        | 29.130        | 2'24.776        | 238,4        | 13:55'09.433 |
| 8                         | 48.497        | 1'02.409      | 57.831        | 36.844        | 3'25.581        | 111,2        | 13:58'35.014 |
| 9                         | 50.768        | 54.558        | 54.853        | 21.053        | 3'01.232        | 78,3         | 14:01'36.246 |
| 10                        | 24.827        | 38.932        | 33.123        | 21.052        | 1'57.934        | 238,4        | 14:03'34.180 |
| 11                        | 24.164        | 38.703        | 39.218        | 23.751        | 2'05.836        | 241,6        | 14:05'40.016 |
| 12                        | 1'00.003      | 1'03.971      | 53.672        | 20.664        | 3'18.310        | 77,0         | 14:08'58.326 |
| 13                        | 24.341        | 37.871        | 33.697        | 20.385        | 1'56.294C       | 236,8        | 14:10'54.620 |

Tempo di gara 27'57.900

| 77 S. PUSSIER (1'53.676) |               |               |               |               |                 |              |              |
|--------------------------|---------------|---------------|---------------|---------------|-----------------|--------------|--------------|
| Giro                     | Seg.1         | Seg.2         | Seg.3         | Seg.4         | T. Giro         | km/h         | Local Time   |
| 1                        |               | 39.321        | 32.728        | 20.516        | 2'03.366        | 180,3        | 13:43'03.792 |
| 2                        | 24.054        | 38.002        | 32.834        | 20.991        | 1'55.881        | 240,5        | 13:44'59.673 |
| 3                        | 24.201        | 37.850        | 32.508        | 20.305        | 1'54.864        | 218,6        | 13:46'54.537 |
| 4                        | <b>23.707</b> | <b>37.239</b> | 32.455        | 20.275        | <b>1'53.676</b> | 243,2        | 13:48'48.213 |
| 5                        | 23.806        | 37.478        | <b>32.311</b> | <b>20.273</b> | 1'53.868        | 242,2        | 13:50'42.081 |
| 6                        | 23.797        | 37.672        | 32.403        | 20.426        | 1'54.298        | 242,7        | 13:52'36.379 |
| 7                        | 24.052        | 46.076        | 44.619        | 30.928        | 2'25.675        | 241,1        | 13:55'02.054 |
| 8                        | 46.221        | 1'03.362      | 58.854        | 36.439        | 3'24.876        | 115,8        | 13:58'26.930 |
| 9                        | 51.858        | 54.098        | 56.377        | 22.787        | 3'05.120        | 84,7         | 14:01'32.050 |
| 10                       | 24.103        | 37.936        | 33.044        | 20.353        | 1'55.436        | 238,4        | 14:03'27.486 |
| 11                       | 23.811        | 37.733        | 36.204        | 25.196        | 2'02.944        | <b>244,3</b> | 14:05'30.430 |
| 12                       | 59.513        | 1'06.873      | 55.874        | 20.798        | 3'23.058        | 77,3         | 14:08'53.488 |

08/05/2022 P = Box In/Out - C = Tempo Invalidato




**ACI Racing Weekend Imola, 7-8 Maggio 2022**
**TCR Italy - Analisi Tempi Gara 2**

Start at 13:41'00.426

 13 23.955 38.663 32.629 20.503 1'55.750C 241,6 14:10'49.238  
 Tempo di gara 27'53.062

**81 S. DI MARE (1'55.699)**

| Giro | Seg.1         | Seg.2         | Seg.3         | Seg.4         | T. Giro         | km/h  | Local Time   |
|------|---------------|---------------|---------------|---------------|-----------------|-------|--------------|
| 1    |               | 41.000        | 34.842        | 21.638        | 2'10.827        | 183,7 | 13:43'11.253 |
| 2    | 29.326        | 38.511        | 34.153        | 20.936        | 2'02.926        | 230,8 | 13:45'14.179 |
| 3    | 24.773        | 38.289        | 33.312        | 20.651        | 1'57.025        | 228,3 | 13:47'11.204 |
| 4    | 24.298        | 38.102        | <b>32.852</b> | 20.708        | 1'55.960        | 235,3 | 13:49'07.164 |
| 5    | <b>24.159</b> | <b>37.839</b> | 33.119        | <b>20.582</b> | <b>1'55.699</b> | 236,3 | 13:51'02.863 |
| 6    | 24.206        | 39.383        | 33.850        | 21.161        | 1'58.600        | 237,4 | 13:53'01.463 |
| 7    | 24.934        | 40.279        | 39.981        | 27.697        | 2'12.891        | 234,8 | 13:55'14.354 |
| 8    | 51.697        | 1'00.841      | 59.657        | 34.583        | 3'26.778        | 103,1 | 13:58'41.132 |
| 9    | 52.246        | 52.018        | 54.173        | 21.209        | 2'59.646        | 74,0  | 14:01'40.778 |
| 10   | 24.555        | 39.021        | 33.263        | 20.714        | 1'57.553        | 233,8 | 14:03'38.331 |

Tempo di gara 22'37.905

**85 R. MASSARO (1'56.772)**

| Giro | Seg.1         | Seg.2         | Seg.3         | Seg.4         | T. Giro         | km/h         | Local Time   |
|------|---------------|---------------|---------------|---------------|-----------------|--------------|--------------|
| 1    |               | 40.874        | 34.516        | 21.165        | 2'11.079        | 187,2        | 13:43'11.505 |
| 2    | 24.954        | <b>38.128</b> | <b>33.103</b> | <b>20.587</b> | <b>1'56.772</b> | 234,3        | 13:45'08.277 |
| 3    | 24.460        | 38.688        | 33.239        | 20.740        | 1'57.127        | 237,9        | 13:47'05.404 |
| 4    | 24.392        | 38.636        | 33.230        | 21.394        | 1'57.652        | 233,3        | 13:49'03.056 |
| 5    | <b>24.322</b> | 38.902        | 33.265        | 20.720        | 1'57.209        | <b>242,2</b> | 13:51'00.265 |
| 6    | 25.081        | 38.492        | 33.804        | 20.797        | 1'58.174        | 241,6        | 13:52'58.439 |
| 7    | 25.110        | 41.171        | 40.225        | 27.848        | 2'14.354        | 231,8        | 13:55'12.793 |
| 8    | 50.493        | 1'01.825      | 59.487        | 34.215        | 3'26.020        | 108,7        | 13:58'38.813 |
| 9    | 51.727        | 52.918        | 54.793        | 20.910        | 3'00.348        | 73,7         | 14:01'39.161 |
| 10   | 24.643        | 38.372        | 33.664        | 20.755        | 1'57.434        | 232,3        | 14:03'36.595 |
| 11   | 24.981        | 38.493        | 37.938        | 23.812        | 2'05.224        | 231,3        | 14:05'41.819 |
| 12   | 1'00.043      | 1'03.162      | 54.349        | 20.871        | 3'18.425        | 74,4         | 14:09'00.244 |
| 13   | 24.621        | 38.611        | 33.154        | 20.780        | 1'57.166C       | 235,8        | 14:10'57.410 |

Tempo di gara 27'59.818

**90 M. TRENTIN (1'56.426)**

| Giro | Seg.1         | Seg.2         | Seg.3         | Seg.4         | T. Giro         | km/h         | Local Time   |
|------|---------------|---------------|---------------|---------------|-----------------|--------------|--------------|
| 1    |               | 41.107        | 34.826        | 21.172        | 2'11.927        | 186,9        | 13:43'12.353 |
| 2    | 24.772        | 39.077        | 33.294        | 20.829        | 1'57.972        | 235,3        | 13:45'10.325 |
| 3    | 24.162        | 38.696        | 33.326        | 20.709        | 1'56.893        | 238,4        | 13:47'07.218 |
| 4    | <b>24.113</b> | <b>38.485</b> | <b>33.106</b> | 20.722        | <b>1'56.426</b> | 237,4        | 13:49'03.644 |
| 5    | 24.670        | 38.765        | 33.521        | <b>20.645</b> | 1'57.601        | 235,8        | 13:51'01.245 |
| 6    | 24.503        | 40.187        | 33.733        | 21.074        | 1'59.497        | <b>238,9</b> | 13:53'00.742 |
| 7    | 24.364        | 40.308        | 40.176        | 27.760        | 2'12.608        | 234,3        | 13:55'13.350 |
| 8    | 51.033        | 1'01.469      | 59.216        | 34.607        | 3'26.325        | 107,1        | 13:58'39.675 |
| 9    | 51.923        | 52.599        | 54.661        | 21.007        | 3'00.190        | 72,4         | 14:01'39.865 |
| 10   | 24.602        | 38.723        | 33.420        | 20.656        | 1'57.401        | 232,8        | 14:03'37.266 |
| 11   | 24.558        | 39.242        | 37.516        | 24.344        | 2'05.660        | 236,8        | 14:05'42.926 |
| 12   | 1'00.352      | 1'02.437      | 54.290        | 20.810        | 3'17.889        | 68,5         | 14:09'00.815 |
| 13   | 24.471        | 38.639        | 33.066        | 20.894        | 1'57.070C       | 238,4        | 14:10'57.885 |

Tempo di gara 28'00.389

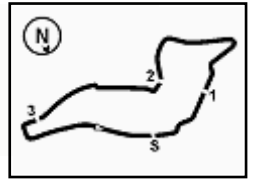
**96 S. GIACON (1'56.756)**

| Giro | Seg.1         | Seg.2         | Seg.3         | Seg.4         | T. Giro         | km/h         | Local Time   |
|------|---------------|---------------|---------------|---------------|-----------------|--------------|--------------|
| 1    |               | 41.195        | 34.735        | 21.108        | 2'11.340        | 190,8        | 13:43'11.766 |
| 2    | 25.105        | 38.810        | 33.404        | 20.548        | 1'57.867        | 237,4        | 13:45'09.633 |
| 3    | 24.446        |               |               | <b>20.496</b> | 1'56.800        | 239,5        | 13:47'06.433 |
| 4    | <b>23.922</b> | 38.589        | <b>33.378</b> | 20.867        | <b>1'56.756</b> | <b>243,2</b> | 13:49'03.189 |
| 5    | 24.749        | <b>38.472</b> | 33.425        | 20.623        | 1'57.269        | 241,1        | 13:51'00.458 |
| 6    | 25.211        | 39.712        | 34.039        | 22.972        | 2'01.934        | <b>243,2</b> | 13:53'02.392 |

Tempo di gara 12'01.966







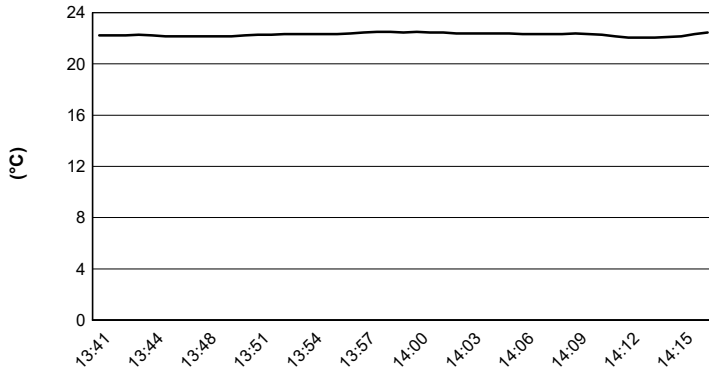
Imola Circuit 4.909 m

# ACI Racing Weekend Imola, 7-8 Maggio 2022

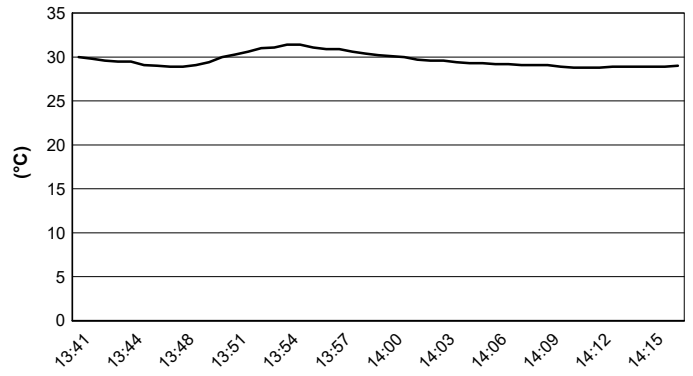
## TCR Italy - Meteo Gara 2

Session started 13:41 - Session ended 14:18

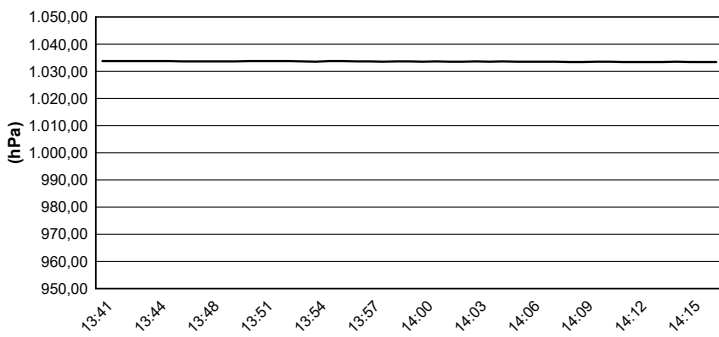
### Air Temperature



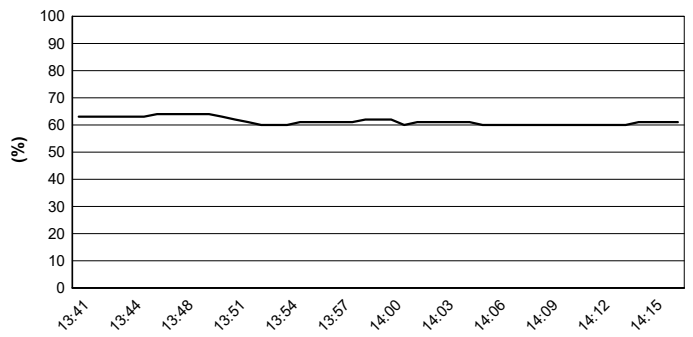
### Track Temperature



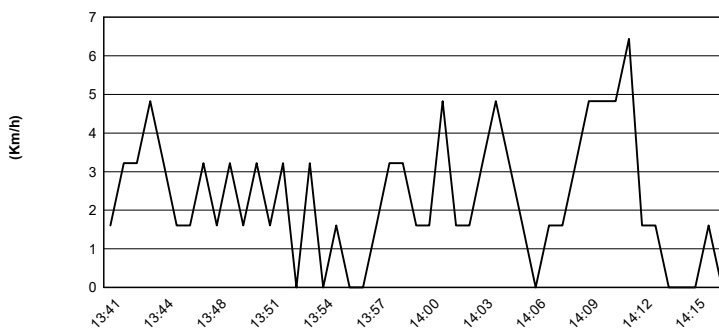
### Air Pressure



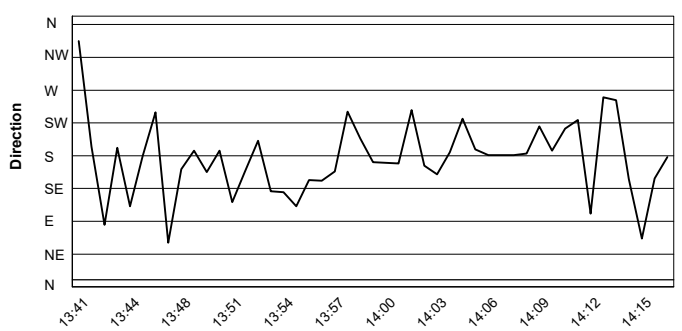
### Humidity



### Wind Speed

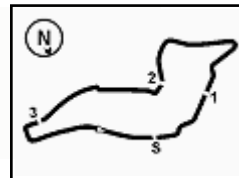


### Wind Direction



08/05/2022



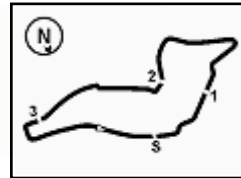


Imola Circuit 4.909 m

**ACI Racing Weekend Imola, 7-8 Maggio 2022**  
**TCR Italy - Griglia Gara 2 (Durata: 30' +1 Giro)**

|    |   |    |   |    |
|----|---|----|---|----|
| 13 | ROMANI E.<br>Hyundai                              | 85 | MASSARO R.<br>Audi                                | 16 |
| 74 | CAPPELLO E.<br>Aggressive Team Italia<br>Hyundai  | 90 | TRENTIN M.<br>Audi                                | 15 |
| 56 | BRUSA C.<br>Target<br>Hyundai                     | 96 | GIACON S.<br>Audi                                 | 14 |
| 81 | DI MARE S.<br>Sc. Vesuvio<br>Cupra                | 18 | VENTAJA S.<br>Team Clairet<br>Audi                | 13 |
| 47 | CARMINATI E.<br>Hyundai                           | 3  | GURRIERI R.<br>Girasole<br>Cupra                  | 12 |
| 66 | COLOMBANI G.<br>Team Clairet<br>Cupra             | 11 | REDUZZI D.<br>Trico WRT<br>Hyundai                | 11 |
| 21 | GUIDA N.<br>Girasole<br>Cupra                     | 20 | RAFFAELE F.<br>Target<br>Hyundai                  | 10 |
| 14 | IANNOTTA M.<br>MM Motorsport<br>Honda             | 24 | LORENZINI L.<br>Aggressive Team Italia<br>Hyundai | 9  |
| 61 | GHERMANDI G.<br>Cupra                             | 46 | BUTTI M.<br>Hyundai                               | 8  |
| 37 | LOPÉZ BOLOTIN S.<br>Auto Club RC2 Valles<br>Cupra | 77 | PUSSIER S.<br>SP Competicion<br>Cupra             | 7  |
| 4  | TAVANO S.<br>Girasole<br>Cupra                    | 23 | VAHTEL M.<br>ALM Motorsport<br>Honda              | 6  |
| 39 | ANTTI R.<br>ALM Motorsport<br>Honda               | 19 | FERNÁNDEZ G.<br>Auto Club RC2 Valles<br>Cupra     | 5  |
| 22 | LANGEVELD N.<br>Target<br>Hyundai                 | 27 | VOLT R.<br>ALM Motorsport<br>Honda                | 4  |
| 8  | BABUIN D.<br>Audi                                 | 33 | TAMBURINI C.<br>MM Motorsport<br>Honda            | 3  |
| 44 | IMBERTI M.<br>Hyundai                             | 5  | BISSA M.<br>MM Motorsport<br>Honda                | 2  |
|    |   | 12 | FERNÁNDEZ G.<br>Auto Club RC2 Valles<br>Audi      | 1  |





Imola Circuit 4.909 m

## ACI Racing Weekend Imola, 7-8 Maggio 2022

### TCR Italy - Classifica Under Gara 2

Giri 12 = 58,908 km - Media 127,042 km/h - Tempo di gara 27'49.284

| Num.                         | Conducente                            | Naz | Concorrente          | Team                 | Auto                   | Classe | Giri | Tempo     | Dist.         | Rel.         | Giro Veloce       |
|------------------------------|---------------------------------------|-----|----------------------|----------------------|------------------------|--------|------|-----------|---------------|--------------|-------------------|
| 1                            | <b>44</b> <b>IMBERTI</b> Michele      | ITA | Imberti Michele      |                      | Hyundai i30 N TCR      | TCR    | 12   | 27'49.284 |               |              | 4 1'53.369        |
| 2                            | <b>27</b> <b>VOLT</b> Ruben           | EST | ALM Motorsport       | ALM Motorsport       | Honda Civic FK7 H70    | TCR    | 12   | 27'50.002 | <b>0.718</b>  | <b>0.718</b> | 5 1'53.628        |
| 3                            | <b>33</b> <b>TAMBURINI</b> Carlo      | ITA | Tamburini Carlo      | MM Motorsport        | Honda Civic FK7 H70    | TCR    | 12   | 27'50.595 | <b>1.311</b>  | <b>0.593</b> | 5 1'53.717        |
| 4                            | <b>37</b> <b>LOPÉZ BOLOTIN</b> Sergio | VEN | Auto Club RC2 Valles | Auto Club RC2 Valles | Cupra Leon Competicion | TCR    | 12   | 27'53.508 | <b>4.224</b>  | <b>2.913</b> | 4 1'53.776        |
| 5                            | <b>20</b> <b>RAFFAELE</b> Francesca   | ITA | Target               | Target               | Hyundai i30 N TCR      | TCR    | 12   | 27'55.295 | <b>6.011</b>  | <b>1.787</b> | 5 1'54.674        |
| 6                            | <b>14</b> <b>IANNOTTA</b> Marco       | ITA | Iannotta Marco       | MM Motorsport        | Honda Civic FK7 H70    | TCR    | 12   | 27'56.383 | <b>7.099</b>  | <b>1.088</b> | 4 1'54.444        |
| ----- Non Classificati ----- |                                       |     |                      |                      |                        |        |      |           |               |              |                   |
| RIT                          | <b>23</b> <b>VAHTEL</b> Mattias       | EST | ALM Motorsport       | ALM Motorsport       | Honda Civic FK7 H70    | TCR    | 6    | 11'31.079 | <b>6 Giri</b> |              | 3 <b>1'53.257</b> |
| RIT                          | <b>96</b> <b>GIACON</b> Steven        | ITA | Giacon Steven        |                      | Audi TCR DSG           | TCDS   | 6    | 12'01.966 | <b>6 Giri</b> |              | 4 1'56.756        |
| RIT                          | <b>46</b> <b>BUTTI</b> Marco          | ITA | D-Max Swisse         |                      | Hyundai i30 N TCR      | TCR    | 5    | 9'40.445  | <b>7 Giri</b> |              | 4 1'53.724        |

Partenti: 9 Classificati: 6 Non Classificati: 0 Ritirati: 3 Non Partiti: 0

Giro Veloce N. 3 Num. 23 Mattias Vahtel 2 Tempo 1'53.257 Media. 156,038 Km/h

|            |     |       |      |
|------------|-----|-------|------|
| Umidità    | 61% | ARIA  | 22°C |
| Condizioni | DRY | Pista | 29°C |

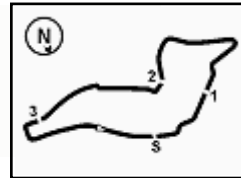
Direttore di Gara : Massimiliano Ghinassi

Direttore di Prova : Gianluca Marotta

08/05/2022 Inizio 13:41 Fine 14:18

Esposta alle: .....





Imola Circuit 4.909 m

# ACI Racing Weekend Imola, 7-8 Maggio 2022

## TCR Italy - Classifica Dame Gara 2

Giri 12 = 58,908 km - Media 126,586 km/h - Tempo di gara 27'55.295

| Num. | Conduttore            | Naz | Concorrente | Team   | Auto              | Classe | Giri | Tempo     | Dist. | Rel. | Giro Veloce |
|------|-----------------------|-----|-------------|--------|-------------------|--------|------|-----------|-------|------|-------------|
| 1    | 20 RAFFAELE Francesca | ITA | Target      | Target | Hyundai i30 N TCR | TCR    | 12   | 27'55.295 |       |      | 5 1'54.674  |

Partenti: 1 Classificati: 1 Non Classificati: 0 Ritirati: 0 Non Partiti: 0

Giro Veloce N. 5 Num. 20 Francesca Raffaele Tempo 1'54.674 Media. 154,110 Km/h

|            |     |       |      |
|------------|-----|-------|------|
| Umidità    | 61% | ARIA  | 22°C |
| Condizioni | DRY | Pista | 29°C |

Direttore di Gara : Massimiliano Ghinassi

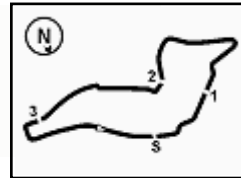
Direttore di Prova : Gianluca Marotta

|            |        |       |
|------------|--------|-------|
|            | Inizio | Fine  |
| 08/05/2022 | 13:41  | 14:18 |

Esposta alle: .....



Powered by FICr PERUGIA TIMING



Imola Circuit 4.909 m

# ACI Racing Weekend Imola, 7-8 Maggio 2022

## TCR Italy - Classifica Rookie Gara 2

Giri 12 = 58,908 km - Media 126,942 km/h - Tempo di gara 27'50.595

| Num. | Conditore                 | Naz | Concorrente     | Team          | Auto                | Classe | Giri | Tempo     | Dist. | Rel. | Giro Veloce |
|------|---------------------------|-----|-----------------|---------------|---------------------|--------|------|-----------|-------|------|-------------|
| 1    | <b>33 TAMBURINI</b> Carlo | ITA | Tamburini Carlo | MM Motorsport | Honda Civic FK7 H70 | TCR    | 12   | 27'50.595 |       |      | 5 1'53.717  |

Partenti: 1    Classificati: 1    Non Classificati: 0    Ritirati: 0    Non Partiti: 0  
 Giro Veloce N. 5    Num. 33 Carlo Tamburini    Tempo 1'53.717    Media. 155,407 Km/h

|            |     |       |      |
|------------|-----|-------|------|
| Umidità    | 61% | ARIA  | 22°C |
| Condizioni | DRY | Pista | 29°C |

Direttore di Gara : Massimiliano Ghinassi

Direttore di Prova : Gianluca Marotta

08/05/2022    Inizio 13:41    Fine 14:18

Esposta alle: .....



Powered by FICr PERUGIA TIMING

