

ACI Racing Weekend Vallelunga, 14-15 Ottobre 2023

Italian F4 Championship - Results Qualifying 2

Vallelunga 4.085 m

1 / 2

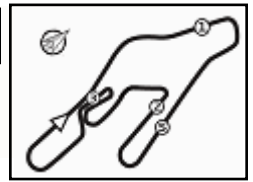
No.	Driver	Nat	Entrant	Team	Car	Class	Time	Gap	Rel.	Laps
1	37 SZTUKA Kacper	POL	US Racing	US Racing (DEU)	Tatuus F4-T421		1'33.497			6
2	8 TAPONEN Tuukka	FIN	Prema Racing	Prema Racing (ITA)	Tatuus F4-T421	R	1'33.718	0.221	0.221	9
3	3 UGOCHUKWU Ugo	USA	Prema Racing	Prema Racing (ITA)	Tatuus F4-T421		1'33.732	0.235	0.014	9
4	15 BADOER Brando	ITA	Van Amersfoort Racing	Van Amersfoort Racing (NLD)	Tatuus F4-T421		1'33.766	0.269	0.034	9
5	80 POWELL Alex	JAM	Prema Racing	Prema Racing (ITA)	Tatuus F4-T421	R	1'33.864	0.367	0.098	9
6	77 SLATER Freddie	GBR	Van Amersfoort Racing	Van Amersfoort Racing (NLD)	Tatuus F4-T421	R	1'33.932	0.435	0.068	9
7	45 BEETON Jack	AUS	Van Amersfoort Racing	Van Amersfoort Racing (NLD)	Tatuus F4-T421	R	1'33.954	0.457	0.022	8
8	20 DAVID Zachary	MLT	US Racing	US Racing (DEU)	Tatuus F4-T421	R	1'33.983	0.486	0.029	8
9	31 BOHRA Akshay	SGP	US Racing	US Racing (DEU)	Tatuus F4-T421	R	1'33.986	0.489	0.003	7
10	13 WHARTON James	AUS	Prema Racing	Prema Racing (ITA)	Tatuus F4-T421		1'34.046	0.549	0.060	7
11	48 EGOZI James	USA	PHM Racing	PHM Racing (DEU)	Tatuus F4-T421	R	1'34.047	0.550	0.001	8
12	23 LINDBLAD Arvid	GBR	Prema Racing	Prema Racing (ITA)	Tatuus F4-T421	R	1'34.118	0.621	0.071	8
13	93 QUINTARELLI Matteo	UAE	R-ace GP	R-ace GP (FRA)	Tatuus F4-T421	R	1'34.120	0.623	0.002	7
14	29 ELKIN Ariel	ISR	Jenzer Motorsport	Jenzer Motorsport (CHE)	Tatuus F4-T421	R	1'34.201	0.704	0.081	8
15	47 LACORTE Nicola	ITA	Prema Racing	Prema Racing (ITA)	Tatuus F4-T421	R	1'34.218	0.721	0.017	9
16	14 AL DHAHERI Rashid	UAE	Prema Racing	Prema Racing (ITA)	Tatuus F4-T421	R	1'34.269	0.772	0.051	9
17	76 NARAC Raphael	FRA	R-ace GP	R-ace GP (FRA)	Tatuus F4-T421	R	1'34.302	0.805	0.033	8
18	7 FERREIRA Matheus	BRA	Van Amersfoort Racing	Van Amersfoort Racing (NLD)	Tatuus F4-T421	R	1'34.323	0.826	0.021	9
19	12 PRADEL Gianmarco	AUS	US Racing	US Racing (DEU)	Tatuus F4-T421	R	1'34.343	0.846	0.020	7
20	9 SPINA Alfio	ITA	BVM Racing	BVM Racing (ITA)	Tatuus F4-T421		1'34.356	0.859	0.013	9
21	5 LARINI Davide	ITA	PHM Racing	PHM Racing (DEU)	Tatuus F4-T421	R	1'34.530	1.033	0.174	8
22	16 NOBELS Aurelia Corine	BRA	Prema Racing	Prema Racing (ITA)	Tatuus F4-T421		1'34.561	1.064	0.031	9
23	94 ANURAG Kabir	SGP	US Racing	US Racing (DEU)	Tatuus F4-T421	R	1'34.594	1.097	0.033	7
24	61 WIEBELHAUS Finn	DEU	Jenzer Motorsport	Jenzer Motorsport (CHE)	Tatuus F4-T421	R	1'34.650	1.153	0.056	8
25	66 LIU Ruiqi	CHN	US Racing	US Racing (DEU)	Tatuus F4-T421	R	1'34.656	1.159	0.006	7
26	21 HAUSMANN Tina	CHE	AKM Motorsport	AKM Motorsport (SMR)	Tatuus F4-T421	R	1'34.656	1.159		9
27	27 ISCHER Ethan	CHE	Jenzer Motorsport	Jenzer Motorsport (CHE)	Tatuus F4-T421		1'34.715	1.218	0.059	8
28	24 ZHANG Shimo	CHN	Jenzer Motorsport	Jenzer Motorsport (CHE)	Tatuus F4-T421	R	1'34.781	1.284	0.066	9
29	53 PEDRINI Giacomo	ITA	PHM Racing	PHM Racing (DEU)	Tatuus F4-T421	R	1'34.781	1.284		7
30	6 MRAD Kamal	AUS	AKM Motorsport	AKM Motorsport (SMR)	Tatuus F4-T421		1'34.805	1.308	0.024	9
31	78 BLOKHINA Viktoria		PHM Racing	PHM Racing (DEU)	Tatuus F4-T421		1'34.915	1.418	0.110	9
32	81 KALENDER Tom	DEU	PHM Racing	PHM Racing (DEU)	Tatuus F4-T421	R	1'34.937	1.440	0.022	8
33	63 LUCHETTI Guido	ITA	Airflow Racing	Airflow Racing (ITA)	Tatuus F4-T421	R	1'35.389	1.892	0.452	9
34	86 DE LA TORRE RAMIREZ Diego	MEX	AKM Motorsport	AKM Motorsport (SMR)	Tatuus F4-T421		1'36.329	2.832	0.940	9

Qualifying Lap Time (110% of 1'33.649): 1'43.014

Humidity:	60%	AIR	26°C
Condition:	DRY	Track	31°C

Stewards : Ronny Guarini Raffaele Giammaria Franco Leoni

 Start End
 13/10/2023 16:37 16:53



ACI Racing Weekend Vallelunga, 14-15 Ottobre 2023
Italian F4 Championship - Results Qualifying 2

Vallelunga 4.085 m

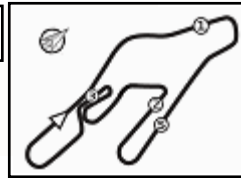
2 / 2

Penalty and Infringement
Fastest Laps Sequence

No.	Entrant	Nat	Team	Car	Local Time	Time	Gap	Avg
63	G. LUCHETTI	ITA	Airflow Racing	Tatuus F4-T421	16:40'49.689	1'43.292		142,373
86	D. DE LA TORRE RAMIREZ	MEX	AKM Motorsport	Tatuus F4-T421	16:41'01.729	1'37.046	-6.246	151,536
37	K. SZTUKA	POL	US Racing	Tatuus F4-T421	16:42'10.698	1'36.213	-0.833	152,848
15	B. BADOER	ITA	Van Amersfoort Racing	Tatuus F4-T421	16:42'59.275	1'35.641	-0.572	153,763
94	K. ANURAG	SGP	US Racing	Tatuus F4-T421	16:43'02.328	1'35.065	-0.576	154,694
61	F. WIEBELHAUS	DEU	Jenzer Motorsport	Tatuus F4-T421	16:43'16.111	1'34.841	-0.224	155,060
37	K. SZTUKA	POL	US Racing	Tatuus F4-T421	16:43'44.555	1'33.857	-0.984	156,685
15	B. BADOER	ITA	Van Amersfoort Racing	Tatuus F4-T421	16:44'33.041	1'33.766	-0.091	156,837
37	K. SZTUKA	POL	US Racing	Tatuus F4-T421	16:45'18.110	1'33.555	-0.211	157,191
37	K. SZTUKA	POL	US Racing	Tatuus F4-T421	16:46'51.607	1'33.497	-0.058	157,288

Stewards : Ronny Guarini Raffaele Giammaria Franco Leoni

 Start 16:37 End 16:53
 13/10/2023

ACI Racing Weekend Vallelunga, 14-15 Ottobre 2023

Italian F4 Championship - Best Sectors & Speed Qualifying 2

BEST LAP

1	37 SZTUKA Kacper	Tatuus F4-T421	1'33.497
2	8 TAPONEN Tuukka	Tatuus F4-T421	1'33.718
3	3 UGOCHUKWU Ugo	Tatuus F4-T421	1'33.732
4	15 BADOER Brando	Tatuus F4-T421	1'33.766
5	80 POWELL Alex	Tatuus F4-T421	1'33.864
6	77 SLATER Freddie	Tatuus F4-T421	1'33.932
7	45 BEETON Jack	Tatuus F4-T421	1'33.954
8	20 DAVID Zachary	Tatuus F4-T421	1'33.983
9	31 BOHRA Akshay	Tatuus F4-T421	1'33.986
10	13 WHARTON James	Tatuus F4-T421	1'34.046
11	48 EGOZI James	Tatuus F4-T421	1'34.047
12	23 LINDBLAD Arvid	Tatuus F4-T421	1'34.118
13	93 QUINTARELLI Matteo	Tatuus F4-T421	1'34.120
14	29 ELKIN Ariel	Tatuus F4-T421	1'34.201
15	47 LACORTE Nicola	Tatuus F4-T421	1'34.218
16	14 AL DHAHERI Rashid	Tatuus F4-T421	1'34.269
17	76 NARAC Raphael	Tatuus F4-T421	1'34.302
18	7 FERREIRA Matheus	Tatuus F4-T421	1'34.323
19	12 PRADEL Gianmarco	Tatuus F4-T421	1'34.343
20	9 SPINA Alfio	Tatuus F4-T421	1'34.356
21	5 LARINI Davide	Tatuus F4-T421	1'34.530
22	16 NOBELS Aurelia Corine	Tatuus F4-T421	1'34.561
23	94 ANURAG Kabir	Tatuus F4-T421	1'34.594
24	61 WIEBELHAUS Finn	Tatuus F4-T421	1'34.650
25	21 HAUSMANN Tina	Tatuus F4-T421	1'34.656
26	66 LIU Ruiqi	Tatuus F4-T421	1'34.656
27	27 ISCHER Ethan	Tatuus F4-T421	1'34.715
28	24 ZHANG Shimo	Tatuus F4-T421	1'34.781
29	53 PEDRINI Giacomo	Tatuus F4-T421	1'34.781
30	6 MRAD Kamal	Tatuus F4-T421	1'34.805
31	78 BLOKHINA Viktoria	Tatuus F4-T421	1'34.915
32	81 KALENDER Tom	Tatuus F4-T421	1'34.937
33	63 LUCHETTI Guido	Tatuus F4-T421	1'35.389
34	86 DE LA TORRE RAMIREZ Dieg	Tatuus F4-T421	1'36.329

SPEED

1	45 BEETON Jack	Tatuus F4-T421	217,3
2	7 FERREIRA Matheus	Tatuus F4-T421	216,4
3	47 LACORTE Nicola	Tatuus F4-T421	216,4
4	15 BADOER Brando	Tatuus F4-T421	216,4
5	31 BOHRA Akshay	Tatuus F4-T421	216,0
6	9 SPINA Alfio	Tatuus F4-T421	216,0
7	12 PRADEL Gianmarco	Tatuus F4-T421	216,0
8	94 ANURAG Kabir	Tatuus F4-T421	215,6
9	53 PEDRINI Giacomo	Tatuus F4-T421	215,1
10	37 SZTUKA Kacper	Tatuus F4-T421	214,7
11	63 LUCHETTI Guido	Tatuus F4-T421	214,7
12	3 UGOCHUKWU Ugo	Tatuus F4-T421	214,3
13	8 TAPONEN Tuukka	Tatuus F4-T421	214,3
14	78 BLOKHINA Viktoria	Tatuus F4-T421	214,3
15	76 NARAC Raphael	Tatuus F4-T421	213,9
16	66 LIU Ruiqi	Tatuus F4-T421	213,9
17	61 WIEBELHAUS Finn	Tatuus F4-T421	213,9
18	13 WHARTON James	Tatuus F4-T421	213,9
19	80 POWELL Alex	Tatuus F4-T421	213,9
20	48 EGOZI James	Tatuus F4-T421	213,9
21	29 ELKIN Ariel	Tatuus F4-T421	213,4
22	77 SLATER Freddie	Tatuus F4-T421	213,4
23	21 HAUSMANN Tina	Tatuus F4-T421	213,4
24	14 AL DHAHERI Rashid	Tatuus F4-T421	213,0
25	23 LINDBLAD Arvid	Tatuus F4-T421	213,0
26	20 DAVID Zachary	Tatuus F4-T421	213,0
27	5 LARINI Davide	Tatuus F4-T421	213,0
28	93 QUINTARELLI Matteo	Tatuus F4-T421	213,0
29	86 DE LA TORRE RAMIREZ Dieg	Tatuus F4-T421	212,6
30	81 KALENDER Tom	Tatuus F4-T421	212,6
31	27 ISCHER Ethan	Tatuus F4-T421	212,6
32	24 ZHANG Shimo	Tatuus F4-T421	212,6
33	16 NOBELS Aurelia Corine	Tatuus F4-T421	211,8
34	6 MRAD Kamal	Tatuus F4-T421	211,4

SEG. 1

1	80 POWELL Alex	13.026
2	45 BEETON Jack	13.079
3	53 PEDRINI Giacomo	13.086
4	31 BOHRA Akshay	13.095
5	94 ANURAG Kabir	13.100
6	3 UGOCHUKWU Ugo	13.116
7	13 WHARTON James	13.120
8	47 LACORTE Nicola	13.121
9	66 LIU Ruiqi	13.124
10	8 TAPONEN Tuukka	13.124
11	76 NARAC Raphael	13.126
12	93 QUINTARELLI Matteo	13.131
13	29 ELKIN Ariel	13.131
14	78 BLOKHINA Viktoria	13.137
15	21 HAUSMANN Tina	13.141
16	12 PRADEL Gianmarco	13.141
17	48 EGOZI James	13.153
18	5 LARINI Davide	13.155
19	27 ISCHER Ethan	13.156
20	81 KALENDER Tom	13.162
21	9 SPINA Alfio	13.175
22	6 MRAD Kamal	13.176
23	7 FERREIRA Matheus	13.177
24	37 SZTUKA Kacper	13.181
25	15 BADOER Brando	13.187
26	16 NOBELS Aurelia Corine	13.207
27	63 LUCHETTI Guido	13.208
28	14 AL DHAHERI Rashid	13.212
29	61 WIEBELHAUS Finn	13.223
30	20 DAVID Zachary	13.224
31	24 ZHANG Shimo	13.229
32	23 LINDBLAD Arvid	13.242
33	77 SLATER Freddie	13.259
34	86 DE LA TORRE RAMIRE	13.272

SEG. 2

1	37 SZTUKA Kacper	32.521
2	15 BADOER Brando	32.543
3	8 TAPONEN Tuukka	32.593
4	80 POWELL Alex	32.617
5	3 UGOCHUKWU Ugo	32.621
6	23 LINDBLAD Arvid	32.647
7	20 DAVID Zachary	32.676
8	31 BOHRA Akshay	32.684
9	13 WHARTON James	32.685
10	77 SLATER Freddie	32.687
11	45 BEETON Jack	32.701
12	12 PRADEL Gianmarco	32.713
13	48 EGOZI James	32.729
14	47 LACORTE Nicola	32.740
15	7 FERREIRA Matheus	32.754
16	93 QUINTARELLI Matteo	32.773
17	29 ELKIN Ariel	32.797
18	9 SPINA Alfio	32.809
19	21 HAUSMANN Tina	32.812
20	76 NARAC Raphael	32.813
21	94 ANURAG Kabir	32.827
22	14 AL DHAHERI Rashid	32.855
23	66 LIU Ruiqi	32.858
24	53 PEDRINI Giacomo	32.891
25	61 WIEBELHAUS Finn	32.895
26	16 NOBELS Aurelia Corine	32.918
27	5 LARINI Davide	32.922
28	78 BLOKHINA Viktoria	32.933
29	27 ISCHER Ethan	32.958
30	81 KALENDER Tom	32.977
31	24 ZHANG Shimo	33.007
32	6 MRAD Kamal	33.026
33	63 LUCHETTI Guido	33.223
34	86 DE LA TORRE RAMIRE	33.468

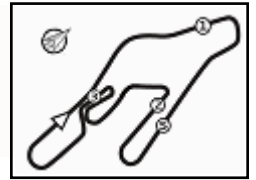
SEG. 3

1	37 SZTUKA Kacper	28.148
2	8 TAPONEN Tuukka	28.153
3	77 SLATER Freddie	28.223
4	15 BADOER Brando	28.231
5	3 UGOCHUKWU Ugo	28.231
6	80 POWELL Alex	28.248
7	14 AL DHAHERI Rashid	28.257
8	45 BEETON Jack	28.270
9	48 EGOZI James	28.288
10	20 DAVID Zachary	28.293
11	23 LINDBLAD Arvid	28.302
12	93 QUINTARELLI Matteo	28.338
13	13 WHARTON James	28.339
14	31 BOHRA Akshay	28.370
15	29 ELKIN Ariel	28.380
16	76 NARAC Raphael	28.391
17	7 FERREIRA Matheus	28.396
18	9 SPINA Alfio	28.414
19	47 LACORTE Nicola	28.427
20	12 PRADEL Gianmarco	28.448
21	5 LARINI Davide	28.462
22	16 NOBELS Aurelia Corine	28.469
23	61 WIEBELHAUS Finn	28.532
24	24 ZHANG Shimo	28.549
25	27 ISCHER Ethan	28.554
26	66 LIU Ruiqi	28.566
27	6 MRAD Kamal	28.576
28	21 HAUSMANN Tina	28.589
29	81 KALENDER Tom	28.595
30	94 ANURAG Kabir	28.603
31	63 LUCHETTI Guido	28.617
32	53 PEDRINI Giacomo	28.666
33	78 BLOKHINA Viktoria	28.678
34	86 DE LA TORRE RAMIRE	28.891

SEG. 4

1	37 SZTUKA Kacper	19.633
2	3 UGOCHUKWU Ugo	19.694
3	20 DAVID Zachary	19.707
4	8 TAPONEN Tuukka	19.708
5	77 SLATER Freddie	19.718
6	15 BADOER Brando	19.730
7	13 WHARTON James	19.766
8	31 BOHRA Akshay	19.768
9	80 POWELL Alex	19.782
10	7 FERREIRA Matheus	19.793
11	47 LACORTE Nicola	19.803
12	9 SPINA Alfio	19.803
13	29 ELKIN Ariel	19.808
14	14 AL DHAHERI Rashid	19.814
15	12 PRADEL Gianmarco	19.816
16	93 QUINTARELLI Matteo	19.819
17	23 LINDBLAD Arvid	19.819
18	16 NOBELS Aurelia Corine	19.827
19	45 BEETON Jack	19.828
20	5 LARINI Davide	19.850
21	48 EGOZI James	19.858
22	76 NARAC Raphael	19.863
23	61 WIEBELHAUS Finn	19.877
24	94 ANURAG Kabir	19.916
25	24 ZHANG Shimo	19.921
26	27 ISCHER Ethan	19.925
27	6 MRAD Kamal	19.928
28	21 HAUSMANN Tina	19.936
29	53 PEDRINI Giacomo	20.001
30	66 LIU Ruiqi	20.010
31	78 BLOKHINA Viktoria	20.035
32	81 KALENDER Tom	20.054
33	63 LUCHETTI Guido	20.206
34	86 DE LA TORRE RAMIRE	20.275





ACI Racing Weekend Vallelunga, 14-15 Ottobre 2023

Italian F4 Championship - Ideal Time Qualifying 2

 Vallelunga 4.085 m
1 / 2

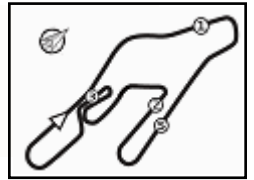
No. Driver	Car	Seg. 1 Diff. 1	Seg. 2 Diff. 2	Seg. 3 Diff. 3	Seg. 4 Diff. 4	Ideal Time		
						Best Lap	Pos.	Diff.
1 37 SZTUKA K. (POL)	Tatuus F4-T421	13.181 +0.009	32.521	28.148 +0.005	19.633	1'33.483 1'33.497	1	0.014
2 8 TAPONEN T. (FIN)	Tatuus F4-T421	13.124 +0.068	32.593	28.153	19.708 +0.072	1'33.578 1'33.718	2	0.140
3 3 UGOCHUKWU U. (USA)	Tatuus F4-T421	13.116 +0.030	32.621 +0.015	28.231	19.694 +0.025	1'33.662 1'33.732	3	0.070
4 80 POWELL A. (JAM)	Tatuus F4-T421	13.026 +0.154	32.617 +0.037	28.248	19.782	1'33.673 1'33.864	5	0.191
5 15 BADOER B. (ITA)	Tatuus F4-T421	13.187 +0.063	32.543	28.231	19.730 +0.012	1'33.691 1'33.766	4	0.075
6 45 BEETON J. (AUS)	Tatuus F4-T421	13.079 +0.076	32.701	28.270	19.828	1'33.878 1'33.954	7	0.076
7 77 SLATER F. (GBR)	Tatuus F4-T421	13.259 +0.005	32.687 +0.026	28.223	19.718 +0.014	1'33.887 1'33.932	6	0.045
8 20 DAVID Z. (MLT)	Tatuus F4-T421	13.224 +0.020	32.676 +0.014	28.293 +0.049	19.707	1'33.900 1'33.983	8	0.083
9 13 WHARTON J. (AUS)	Tatuus F4-T421	13.120 +0.061	32.685	28.339 +0.067	19.766 +0.008	1'33.910 1'34.046	10	0.136
10 31 BOHRA A. (SGP)	Tatuus F4-T421	13.095 +0.047	32.684	28.370	19.768 +0.022	1'33.917 1'33.986	9	0.069
11 23 LINDBLAD A. (GBR)	Tatuus F4-T421	13.242	32.647	28.302 +0.068	19.819 +0.040	1'34.010 1'34.118	12	0.108
12 48 EGOZI J. (USA)	Tatuus F4-T421	13.153 +0.019	32.729	28.288	19.858	1'34.028 1'34.047	11	0.019
13 93 QUINTARELLI M. (UAE)	Tatuus F4-T421	13.131 +0.001	32.773	28.338	19.819 +0.058	1'34.061 1'34.120	13	0.059
14 47 LACORTE N. (ITA)	Tatuus F4-T421	13.121 +0.067	32.740 +0.060	28.427	19.803	1'34.091 1'34.218	15	0.127
15 29 ELKIN A. (ISR)	Tatuus F4-T421	13.131 +0.024	32.797	28.380 +0.038	19.808 +0.023	1'34.116 1'34.201	14	0.085
16 12 PRADEL G. (AUS)	Tatuus F4-T421	13.141 +0.093	32.713 +0.065	28.448 +0.021	19.816 +0.046	1'34.118 1'34.343	19	0.225
17 7 FERREIRA M. (BRA)	Tatuus F4-T421	13.177 +0.048	32.754 +0.155	28.396	19.793	1'34.120 1'34.323	18	0.203
18 14 AL DHAHERI R. (UAE)	Tatuus F4-T421	13.212 +0.013	32.855 +0.001	28.257 +0.080	19.814 +0.037	1'34.138 1'34.269	16	0.131
19 76 NARAC R. (FRA)	Tatuus F4-T421	13.126	32.813 +0.037	28.391 +0.056	19.863 +0.016	1'34.193 1'34.302	17	0.109
20 9 SPINA A. (ITA)	Tatuus F4-T421	13.175 +0.097	32.809	28.414	19.803 +0.058	1'34.201 1'34.356	20	0.155
21 5 LARINI D. (ITA)	Tatuus F4-T421	13.155	32.922 +0.062	28.462	19.850 +0.079	1'34.389 1'34.530	21	0.141
22 16 NOBELS A. (BRA)	Tatuus F4-T421	13.207 +0.033	32.918	28.469 +0.033	19.827 +0.074	1'34.421 1'34.561	22	0.140
23 94 ANURAG K. (SGP)	Tatuus F4-T421	13.100 +0.115	32.827 +0.033	28.603	19.916	1'34.446 1'34.594	23	0.148
24 21 HAUSMANN T. (CHE)	Tatuus F4-T421	13.141 +0.087	32.812 +0.091	28.589	19.936	1'34.478 1'34.656	25	0.178
25 61 WIEBELHAUS F. (DEU)	Tatuus F4-T421	13.223 +0.046	32.895 +0.005	28.532	19.877 +0.072	1'34.527 1'34.650	24	0.123
26 66 LIU R. (CHN)	Tatuus F4-T421	13.124	32.858 +0.088	28.566	20.010 +0.010	1'34.558 1'34.656	26	0.098
27 27 ISCHER E. (CHE)	Tatuus F4-T421	13.156 +0.111	32.958 +0.011	28.554	19.925	1'34.593 1'34.715	27	0.122
28 53 PEDRINI G. (ITA)	Tatuus F4-T421	13.086 +0.016	32.891 +0.026	28.666 +0.017	20.001 +0.078	1'34.644 1'34.781	29	0.137
29 6 MRAD K. (AUS)	Tatuus F4-T421	13.176 +0.070	33.026	28.576	19.928 +0.029	1'34.706 1'34.805	30	0.099
30 24 ZHANG S. (CHN)	Tatuus F4-T421	13.229 +0.017	33.007 +0.055	28.549	19.921 +0.003	1'34.706 1'34.781	28	0.075
31 78 BLOKHINA V.	Tatuus F4-T421	13.137	32.933	28.678 +0.132	20.035	1'34.783 1'34.915	31	0.132
32 81 KALENDER T. (DEU)	Tatuus F4-T421	13.162 +0.019	32.977 +0.053	28.595	20.054 +0.077	1'34.788 1'34.937	32	0.149
33 63 LUCHETTI G. (ITA)	Tatuus F4-T421	13.208 +0.109	33.223 +0.004	28.617	20.206 +0.022	1'35.254 1'35.389	33	0.135

13/10/2023





4.3



ACI Racing Weekend Vallelunga, 14-15 Ottobre 2023 Italian F4 Championship - Ideal Time Qualifying 2

Vallelunga 4.085 m
2 / 2

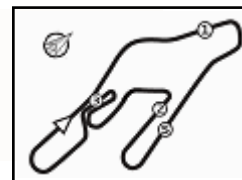
No. Driver	Car	Seg. 1	Seg. 2	Seg. 3	Seg. 4	Ideal Time			
		Diff. 1	Diff. 2	Diff. 3	Diff. 4	Best Lap	Pos.	Diff.	
34	86 DE LA TORRE RAMIRE	Tatuus F4-T421	13.272 +0.146	33.468 +0.099	28.891	20.275 +0.178	1'35.906		
Overall Ideal Time			13.026	32.521	28.148	19.633	1'33.328		

13/10/2023



Powered by FICr PERUGIA TIMING





Vallelunga 4.085 m

1 / 4

ACI Racing Weekend Vallelunga, 14-15 Ottobre 2023

Italian F4 Championship - Chronological Analysis Qualifying 2

3 U. UGOCHUKWU (1'33.732)							
Lap	Seg.1	Seg.2	Seg.3	Seg.4	Lap Time	km/h	Local Time
1							16:38'51.351
2	20.063	38.561	31.331	21.844	1'51.799P	197,8	16:40'43.150
3	13.574	34.646	31.195	20.330	1'39.745	207,3	16:42'22.895
4	13.116	32.695	28.432	19.871	1'34.114	214,3	16:43'57.009
5	13.146	32.636	28.231	19.719	1'33.732	214,3	16:45'30.741
6	13.140	32.661	28.274	19.722	1'33.797	211,4	16:47'04.538
7	13.156	32.621	28.452	19.846	1'34.075	213,0	16:48'38.613
8	13.176	32.701	28.339	19.694	1'33.910	213,0	16:50'12.523
9	14.235	37.164	28.635	20.052	1'40.086	158,8	16:51'52.609
10	13.122	32.633	28.380	19.740	1'33.875	213,9	16:53'26.484

9 A. SPINA (1'34.356)							
Lap	Seg.1	Seg.2	Seg.3	Seg.4	Lap Time	km/h	Local Time
1							16:38'55.718
2	19.373	37.443	31.322	21.744	1'49.882P	206,1	16:40'45.600
3	13.631	34.649	30.700	20.832	1'39.812	213,4	16:42'25.412
4	13.175	33.046	28.632	19.932	1'34.785	215,6	16:44'00.197
5	13.282	32.970	28.448	19.804	1'34.504	213,4	16:45'34.701
6	13.316	32.984	28.438	19.804	1'34.542	213,9	16:47'09.243
7	13.316	33.625	29.386	20.442	1'36.769	206,1	16:48'46.012
8	13.261	32.839	28.527	19.803	1'34.430	215,6	16:50'20.442
9	13.225	32.904	28.679	19.965	1'34.773	216,0	16:51'55.215
10	13.272	32.809	28.414	19.861	1'34.356	214,7	16:53'29.571

5 D. LARINI (1'34.530)							
Lap	Seg.1	Seg.2	Seg.3	Seg.4	Lap Time	km/h	Local Time
1							16:39'03.382
2	22.048	40.419	32.131	21.371	1'55.969P	197,8	16:40'59.351
3	13.466	39.741	30.793	22.306	1'46.306	124,1	16:42'45.657
4	13.285	33.298	28.672	20.051	1'35.306	212,6	16:44'20.963
5	13.235	33.074	28.599	19.939	1'34.847	213,0	16:45'55.810
6	13.249	33.010	28.663	19.968	1'34.890	213,0	16:47'30.700
7	13.155	32.984	28.462	19.929	1'34.530	213,0	16:49'05.230
8	13.248	33.237	28.526	20.031	1'35.042	212,2	16:50'40.272
9	13.304	32.922	28.546	19.850	1'34.622	212,6	16:52'14.894

12 G. PRADEL (1'34.343)							
Lap	Seg.1	Seg.2	Seg.3	Seg.4	Lap Time	km/h	Local Time
1							16:39'32.645
2	18.438	35.439	29.605	20.435	1'43.917P	207,7	16:41'16.562
3	13.318	33.247	31.426	20.135	1'38.126	208,1	16:42'54.688
4	13.246	32.796	28.546	19.816	1'34.404	213,9	16:44'29.092
5	13.208	32.751	28.448	19.952	1'34.359	213,0	16:46'03.451
6	13.234	32.778	28.469	19.862	1'34.343	213,0	16:47'37.794
7	13.209	32.760	37.197	20.638	1'43.804	214,3	16:49'21.598
8	13.192	32.764	28.486	19.975	1'34.417	213,9	16:50'56.015

6 K. MRAD (1'34.805)							
Lap	Seg.1	Seg.2	Seg.3	Seg.4	Lap Time	km/h	Local Time
1							16:38'00.665
2	18.041	36.090	30.099	21.420	1'45.650P	195,7	16:39'46.315
3	13.297	34.850	31.978	21.220	1'41.345	201,9	16:41'27.660
4	13.176	33.364	28.901	20.149	1'35.590	209,7	16:43'03.250
5	13.273	33.105	28.642	20.091	1'35.111	210,5	16:44'38.361
6	13.287	33.189	28.843	20.169	1'35.488	209,7	16:46'13.849
7	13.199	33.105	28.970	20.172	1'35.446	211,4	16:47'49.295
8	13.932	38.040	29.987	20.232	1'42.191	201,5	16:49'31.486
9	13.246	33.026	28.576	19.957	1'34.805	210,5	16:51'06.291
10	13.295	33.079	28.637	19.928	1'34.939	209,3	16:52'41.230

13 J. WHARTON (1'34.046)							
Lap	Seg.1	Seg.2	Seg.3	Seg.4	Lap Time	km/h	Local Time
1							16:40'22.649
2	18.884	37.173	30.827	21.110	1'47.994P	190,5	16:42'10.643
3	13.450	35.279	29.525	20.096	1'38.350	211,8	16:43'48.993
4	13.173	32.761	28.562	19.770	1'34.266	211,8	16:45'23.259
5	13.160	32.703	28.412	19.789	1'34.064	213,0	16:46'57.323
6	13.181	32.685	28.406	19.774	1'34.046	213,0	16:48'31.369
7	13.160	32.734	28.434	19.766	1'34.094	213,9	16:50'05.463
8	13.120	32.711	28.524	19.815	1'34.170	212,6	16:51'39.633

7 M. FERREIRA (1'34.323)							
Lap	Seg.1	Seg.2	Seg.3	Seg.4	Lap Time	km/h	Local Time
1							16:37'58.067
2	17.468	36.021	31.067	21.983	1'46.539P	206,9	16:39'44.606
3	13.402	34.694	30.762	20.779	1'39.637	212,6	16:41'24.243
4	13.203	33.155	29.281	20.120	1'35.759	216,4	16:43'00.002
5	13.177	32.754	28.547	19.910	1'34.388	216,0	16:44'34.390
6	13.225	32.909	28.396	19.793	1'34.323	213,9	16:46'08.713
7	13.227	32.858	28.502	19.827	1'34.414	214,7	16:47'43.127
8	13.259	32.914	28.536	19.948	1'34.657	213,9	16:49'17.784
9	13.331	32.874	28.456	19.941	1'34.602	214,7	16:50'52.386
10	13.226	32.973	28.425	19.883	1'34.507	214,3	16:52'26.893

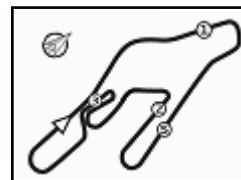
14 R. AL DHAHERI (1'34.269)							
Lap	Seg.1	Seg.2	Seg.3	Seg.4	Lap Time	km/h	Local Time
1							16:38'32.323
2	19.428	42.832	39.091	22.509	2'03.860P	177,3	16:40'36.183
3	14.054	34.763	30.303	20.360	1'39.480	208,1	16:42'15.663
4	13.228	33.081	28.717	20.052	1'35.078	212,6	16:43'50.741
5	13.221	32.931	28.392	19.952	1'34.496	212,6	16:45'25.237
6	13.212	32.890	28.419	19.890	1'34.411	213,0	16:46'59.648
7	13.236	32.855	28.346	19.873	1'34.310	212,2	16:48'33.958
8	13.225	32.856	28.337	19.851	1'34.269	211,4	16:50'08.227
9	13.224	32.960	28.291	19.875	1'34.350	211,8	16:51'42.577
10	13.274	32.984	28.257	19.814	1'34.329	210,9	16:53'16.906

8 T. TAPONEN (1'33.718)							
Lap	Seg.1	Seg.2	Seg.3	Seg.4	Lap Time	km/h	Local Time
1							16:38'53.940
2	20.514	37.600	31.511	21.842	1'51.467P	205,3	16:40'45.407
3	13.443	34.639	30.546	20.735	1'39.363	206,9	16:42'24.770
4	13.156	32.722	28.362	19.733	1'33.973	212,2	16:43'58.743
5	13.175	32.619	28.230	19.708	1'33.732	212,2	16:45'32.475
6	13.192	32.593	28.153	19.780	1'33.718	213,0	16:47'06.193
7	13.173	32.678	28.153	19.714	1'33.718	213,9	16:48'39.911
8	13.124	33.498	29.880	19.974	1'36.476	214,3	16:50'16.387
9	13.207	32.632	28.243	19.805	1'33.887	211,8	16:51'50.274

15 B. BADOER (1'33.766)							
Lap	Seg.1	Seg.2	Seg.3	Seg.4	Lap Time	km/h	Local Time
1							16:37'56.522
2	18.321	36.145	31.320	21.983	1'47.769P	209,7	16:39'44.291
3	13.529	34.482	30.233	21.099	1'39.343	213,4	16:41'23.634
4	13.319	33.224	29.073	20.025	1'35.641	213,4	16:42'59.275
5	13.250	32.543	28.231	19.742	1'33.766	216,0	16:44'33.041
6	13.199	32.592	28.341	19.812	1'33.944	215,1	16:46'06.985
7	13.208	32.645	28.276	19.730	1'33.859	215,1	16:47'40.844
8	13.187	32.601	28.397	19.770	1'33.955	216,0	16:49'14.799
9	13.210	33.311	30.472	22.258	1'39.251	215,1	16:50'54.050
10	13.211	32.584	28.494	19.775	1'34.064	216,4	16:52'28.114

13/10/2023

P = Pits In/Out - C = Lap Time Cancelled



Vallelunga 4.085 m

2 / 4

ACI Racing Weekend Vallelunga, 14-15 Ottobre 2023

Italian F4 Championship - Chronological Analysis Qualifying 2

16 A. NOBELS (1'34.561)								27 E. ISCHER (1'34.715)							
Lap	Seg.1	Seg.2	Seg.3	Seg.4	Lap Time	km/h	Local Time	Lap	Seg.1	Seg.2	Seg.3	Seg.4	Lap Time	km/h	Local Time
1							16:38'56.897	1							16:38'59.263
2	19.555	37.849	32.183	21.776	1'51.363P	180,9	16:40'48.260	2	25.924	40.158	32.103	21.333	1'59.518P	197,4	16:40'58.781
3	13.543	34.701	32.393	21.686	1'42.323	203,8	16:42'30.583	3	13.491	39.158	30.320	21.160	1'44.129	142,9	16:42'42.910
4	13.291	33.297	28.617	20.056	1'35.261	210,9	16:44'05.844	4	13.191	33.134	28.831	20.268	1'35.424	211,4	16:44'18.334
5	13.234	33.192	28.612	19.859	1'34.897	210,9	16:45'40.741	5	13.156	33.095	28.656	19.932	1'34.839	212,6	16:45'53.173
6	13.240	32.918	28.502	19.901	1'34.561	210,9	16:47'15.302	6	13.208	33.041	28.692	19.970	1'34.911	211,8	16:47'28.084
7	13.220	33.066	28.522	19.932	1'34.740	211,4	16:48'50.042	7	13.267	32.969	28.554	19.925	1'34.715	210,9	16:49'02.799
8	13.207	33.063	28.557	19.962	1'34.789	211,8	16:50'24.831	8	13.293	37.231	30.079	20.147	1'40.750	129,7	16:50'43.549
9	13.286	32.984	28.469	19.931	1'34.670	210,1	16:51'59.501	9	13.162	32.958	28.642	20.076	1'34.838	212,6	16:52'18.387
10	13.323	33.089	28.591	19.827	1'34.830	211,8	16:53'34.331								

20 Z. DAVID (1'33.983)								29 A. ELKIN (1'34.201)							
Lap	Seg.1	Seg.2	Seg.3	Seg.4	Lap Time	km/h	Local Time	Lap	Seg.1	Seg.2	Seg.3	Seg.4	Lap Time	km/h	Local Time
1							16:39'41.571	1							16:38'58.516
2	21.357	42.240	31.342	20.223	1'55.162P	150,4	16:41'36.733	2	26.474	40.494	31.339	21.219	1'59.526P		16:40'58.042
3	13.288	33.386	28.820	20.085	1'35.579	210,5	16:43'12.312	3	13.482	39.373	30.352	20.788	1'43.995	145,7	16:42'42.037
4	13.240	32.740	28.367	19.724	1'34.071	212,6	16:44'46.383	4	13.157	33.156	28.380	20.843	1'35.536		16:44'17.573
5	13.238	32.676	28.345	19.727	1'33.986	212,2	16:46'20.369	5	13.131	32.945	28.478	19.871	1'34.425	213,4	16:45'51.998
6	13.238	32.709	28.368	19.729	1'34.044	213,0	16:47'54.413	6	13.155	32.797	28.418	19.831	1'34.201		16:47'26.199
7	13.224	32.748	29.712	20.805	1'36.489	213,0	16:49'30.902	7	13.179	32.913	28.419	19.885	1'34.396	213,4	16:49'00.595
8	13.244	32.690	28.342	19.707	1'33.983	212,2	16:51'04.885	8	13.896	38.305	30.126	20.023	1'42.350	133,5	16:50'42.945
9	13.234	32.724	28.293	19.835	1'34.086	212,6	16:52'38.971	9	13.182	32.823	28.488	19.808	1'34.301	212,2	16:52'17.246

21 T. HAUSMANN (1'34.656)								31 A. BOHRA (1'33.986)							
Lap	Seg.1	Seg.2	Seg.3	Seg.4	Lap Time	km/h	Local Time	Lap	Seg.1	Seg.2	Seg.3	Seg.4	Lap Time	km/h	Local Time
1							16:38'35.046	1							16:38'45.551
2	18.607	42.145	40.133	22.375	2'03.260P	158,8	16:40'38.306	2	20.227	36.824	30.617	22.111	1'49.779P	199,3	16:40'35.330
3	13.518	34.417	30.831	20.165	1'38.931	208,5	16:42'17.237	3	13.240	33.784	29.305	20.626	1'36.955	211,8	16:42'12.285
4	13.203	33.205	28.666	20.010	1'35.084	211,8	16:43'52.321	4	13.095	32.954	28.593	19.874	1'34.516	216,0	16:43'46.801
5	13.229	32.925	28.639	19.942	1'34.735	211,4	16:45'27.056	5	13.142	32.684	28.370	19.790	1'33.986	213,9	16:45'20.787
6	13.228	32.903	28.589	19.936	1'34.656	211,8	16:47'01.712	6	13.168	32.810	28.419	19.768	1'34.165	213,9	16:46'54.952
7	13.237	32.997	30.016	21.223	1'37.473	212,2	16:48'39.185	7	13.176	32.745	28.374	19.777	1'34.072	214,3	16:48'29.024
8	13.141	33.094	28.665	20.016	1'34.916	213,4	16:50'14.101	8	13.114	32.764	28.455	19.783	1'34.116	215,1	16:50'03.140
9	13.203	32.820	28.877	19.983	1'34.883	212,6	16:51'48.984								
10	13.297	32.812	28.614	20.018	1'34.741	211,4	16:53'23.725								

23 A. LINDBLAD (1'34.118)								37 K. SZTUKA (1'33.497)							
Lap	Seg.1	Seg.2	Seg.3	Seg.4	Lap Time	km/h	Local Time	Lap	Seg.1	Seg.2	Seg.3	Seg.4	Lap Time	km/h	Local Time
1							16:39'01.077	1							16:38'45.059
2	23.581	40.488	31.303	21.292	1'56.664P	180,0	16:40'57.741	2	20.401	36.474	30.751	21.800	1'49.426P	201,5	16:40'34.485
3	13.528	39.373	30.098	20.330	1'43.329	142,7	16:42'41.070	3	13.463	33.475	28.731	20.544	1'36.213	208,9	16:42'10.698
4	13.271	32.766	28.447	21.180	1'35.664	212,2	16:44'16.734	4	13.248	32.710	28.247	19.652	1'33.857	214,3	16:43'44.555
5	13.242	32.647	28.370	19.859	1'34.118	212,2	16:45'50.852	5	13.185	32.539	28.148	19.683	1'33.555	213,9	16:45'18.110
6	13.287	32.771	28.404	19.838	1'34.300	211,4	16:47'25.152	6	13.190	32.521	28.153	19.633	1'33.497	213,9	16:46'51.607
7	13.300	32.725	28.302	19.844	1'34.171	211,4	16:48'59.323	7	13.181	32.603	29.229	21.289	1'36.302	214,7	16:48'27.909
8	14.569	38.300	29.761	19.880	1'42.510	136,0	16:50'41.833								
9	13.257	32.759	28.341	19.819	1'34.176	213,0	16:52'16.009								

24 S. ZHANG (1'34.781)								45 J. BEETON (1'33.954)							
Lap	Seg.1	Seg.2	Seg.3	Seg.4	Lap Time	km/h	Local Time	Lap	Seg.1	Seg.2	Seg.3	Seg.4	Lap Time	km/h	Local Time
1							16:38'13.480	1							16:37'59.357
2	18.081	37.620	30.778	22.527	1'49.006P	197,1	16:40'02.486	2	17.808	36.647	30.160	21.821	1'46.436P	187,8	16:39'45.793
3	13.619	34.403	29.141	20.344	1'37.507	201,1	16:41'39.993	3	13.405	34.002	30.599	20.900	1'38.906	208,5	16:41'24.699
4	13.229	35.168	29.398	20.092	1'37.887	209,7	16:43'17.880	4	13.079	33.142	29.310	20.923	1'36.454	217,3	16:43'01.153
5	13.274	33.007	28.596	19.954	1'34.831	211,4	16:44'52.711	5	13.155	32.701	28.270	19.828	1'33.954	214,3	16:44'35.107
6	13.246	33.062	28.549	19.924	1'34.781	210,5	16:46'27.492	6	13.118	33.214	29.250	20.258	1'35.840	213,4	16:46'10.947
7	13.286	33.093	28.582	19.921	1'34.882	211,8	16:48'02.374	7	13.232	32.869	28.329	19.847	1'34.277	214,3	16:47'45.224
8	13.299	33.152	28.623	20.117	1'35.191	210,5	16:49'37.565	8	13.236	32.857	28.474	19.911	1'34.478	213,4	16:49'19.702
9	13.898	36.071	28.896	20.134	1'38.999		16:51'16.564	9	13.197	35.489	28.574	19.911	1'37.171	202,2	16:50'56.873

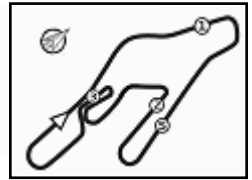
47 N. LACORTE (1'34.218)							
Lap	Seg.1	Seg.2	Seg.3	Seg.4	Lap Time	km/h	Local Time
1							16:38'48.163

13/10/2023

P = Pits In/Out - C = Lap Time Cancelled



4.4



Vallelunga 4.085 m

3 / 4

ACI Racing Weekend Vallelunga, 14-15 Ottobre 2023 Italian F4 Championship - Chronological Analysis Qualifying 2

2	19.421	35.972	31.055	21.623	1'48.071P	208,1	16:40'36.234
3	13.397	33.994	29.121	20.253	1'36.765	210,9	16:42'12.999
4	13.121	32.974	28.590	19.897	1'34.582	216,4	16:43'47.581
5	13.142	32.740	28.531	19.869	1'34.282	215,6	16:45'21.863
6	13.165	32.747	28.459	19.898	1'34.269	214,7	16:46'56.132
7	13.188	32.800	28.427	19.803	1'34.218	215,1	16:48'30.350
8	13.209	32.829	28.478	19.962	1'34.478	214,7	16:50'04.828
9	13.527	34.014	28.588	20.046	1'36.175	213,9	16:51'41.003
10	13.227	32.804	28.436	19.845	1'34.312	214,7	16:53'15.315

3	13.518	34.528	31.222	21.200	1'40.468	204,2	16:41'25.545
4	13.206	32.941	29.144	21.061	1'36.352	213,4	16:43'01.897
5	13.124	32.946	28.566	20.020	1'34.656	213,9	16:44'36.553
6	13.248	33.120	30.335	20.010	1'36.713	211,8	16:46'13.266
7	13.242	32.858	28.580	20.054	1'34.734	213,4	16:47'48.000
8	13.280	32.881	28.658	20.128	1'34.947	211,8	16:49'22.947

76 R. NARAC (1'34.302)

Lap	Seg.1	Seg.2	Seg.3	Seg.4	Lap Time	km/h	Local Time
1							16:38'54.821
2	20.081	37.602	31.292	21.884	1'50.859P	200,4	16:40'45.680
3	13.707	34.738	31.562	21.084	1'41.091	213,0	16:42'26.771
4	13.139	33.009	28.561	19.919	1'34.628	212,6	16:44'01.399
5	13.126	32.850	28.447	19.879	1'34.302	213,0	16:45'35.701
6	13.130	32.813	28.611	19.863	1'34.417	213,9	16:47'10.118
7	13.133	33.338	28.497	19.935	1'34.903	213,9	16:48'45.021
8	13.211	32.979	28.405	19.898	1'34.493	212,2	16:50'19.514
9	13.208	32.851	28.391	19.960	1'34.410	212,2	16:51'53.924

77 F. SLATER (1'33.932)

Lap	Seg.1	Seg.2	Seg.3	Seg.4	Lap Time	km/h	Local Time
1							16:38'09.695
2	20.879	37.670	30.779	40.034	2'09.362P	192,9	16:40'19.057
3	18.199	36.185	29.750	20.622	1'44.756P	180,3	16:42'03.813
4	13.345	34.114	29.418	20.072	1'36.949	212,6	16:43'40.762
5	13.286	32.687	28.492	19.790	1'34.255	213,0	16:45'15.017
6	13.264	32.713	28.223	19.732	1'33.932	213,4	16:46'48.949
7	13.259	32.714	28.372	19.743	1'34.088	213,4	16:48'23.037
8	13.260	32.756	28.427	19.798	1'34.241	213,4	16:49'57.278
9	13.267	32.812	28.461	19.718	1'34.258	213,0	16:51'31.536
10	13.270	32.831	28.493	19.764	1'34.358	212,6	16:53'05.894

78 V. BLOKHINA (1'34.915)

Lap	Seg.1	Seg.2	Seg.3	Seg.4	Lap Time	km/h	Local Time
1							16:37'21.225
2	19.375	40.979	33.331	22.369	1'56.054P	153,6	16:39'17.279
3	15.468	36.947	30.131	20.997	1'43.543	192,2	16:41'00.822
4	13.419	39.107	31.145	23.172	1'46.843	147,9	16:42'47.665
5	13.219	33.199	28.924	20.258	1'35.600	213,9	16:44'23.265
6	13.167	33.011	28.694	20.095	1'34.967	213,9	16:45'58.232
7	13.199	33.051	28.678	20.103	1'35.031	212,6	16:47'33.263
8	13.200	33.083	29.012	20.558	1'35.853	211,8	16:49'09.116
9	13.273	32.948	28.853	20.105	1'35.179	213,0	16:50'44.295
10	13.137	32.933	28.810	20.035	1'34.915	214,3	16:52'19.210

61 F. WIEBELHAUS (1'34.650)

Lap	Seg.1	Seg.2	Seg.3	Seg.4	Lap Time	km/h	Local Time
1							16:38'15.887
2	18.439	35.997	30.201	22.800	1'47.437P	203,0	16:40'03.324
3	13.899	33.970	29.166	20.911	1'37.946	212,2	16:41'41.270
4	13.230	32.968	28.627	20.016	1'34.841	212,6	16:43'16.111
5	13.253	32.936	28.782	19.877	1'34.848	212,2	16:44'50.959
6	13.269	32.900	28.532	19.949	1'34.650	211,4	16:46'25.609
7	14.220	34.567	28.766	20.165	1'37.718	194,9	16:48'03.327
8	13.223	32.895	28.648	20.108	1'34.874	213,9	16:49'38.201
9	13.234	32.944	28.598	20.049	1'34.825		16:51'13.026

63 G. LUCHETTI (1'35.389)

Lap	Seg.1	Seg.2	Seg.3	Seg.4	Lap Time	km/h	Local Time
1							16:37'17.045
2	18.684	36.958	31.907	21.803	1'49.352P	191,8	16:39'06.397
3	16.625	35.428	30.155	21.084	1'43.292	206,5	16:40'49.689
4	13.380	34.529	32.037	21.600	1'41.546	208,9	16:42'31.235
5	13.208	33.347	28.784	20.211	1'35.550	214,7	16:44'06.785
6	13.282	33.223	28.676	20.223	1'35.404	213,9	16:45'42.189
7	13.317	33.227	28.617	20.228	1'35.389	212,6	16:47'17.578
8	13.337	33.290	28.648	20.206	1'35.481	212,6	16:48'53.059
9	13.349	49.278	29.119	20.564	1'52.310	204,9	16:50'45.369
10	13.326	33.359	28.665	20.471	1'35.821	213,4	16:52'21.190

80 A. POWELL (1'33.864)

Lap	Seg.1	Seg.2	Seg.3	Seg.4	Lap Time	km/h	Local Time
1							16:38'50.271
2	19.268	37.524	31.674	22.184	1'50.650P	203,8	16:40'40.921
3	13.462	34.933	29.918	21.240	1'39.553	206,1	16:42'20.474
4	13.171	32.777	28.443	19.896	1'34.287	212,6	16:43'54.761
5	13.180	32.654	28.248	19.782	1'33.864	212,6	16:45'28.625
6	13.156	32.675	28.251	19.795	1'33.877	213,0	16:47'02.502
7	13.124	37.161	29.568	20.531	1'40.384	178,2	16:48'42.886
8	13.203	32.650	28.358	19.806	1'34.017	213,0	16:50'16.903
9	13.026	32.809	28.427	20.319	1'34.581	213,9	16:51'51.484
10	13.164	32.617	28.258	19.842	1'33.881	213,9	16:53'25.365

66 R. LIU (1'34.656)

Lap	Seg.1	Seg.2	Seg.3	Seg.4	Lap Time	km/h	Local Time
1							16:37'33.538
2	23.571	45.728	39.050	23.190	2'11.539P	168,5	16:39'45.077

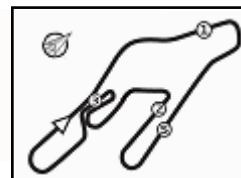
81 T. KALENDER (1'34.937)

Lap	Seg.1	Seg.2	Seg.3	Seg.4	Lap Time	km/h	Local Time
1							16:38'57.535
2	18.669	36.795	31.480	21.665	1'48.609P	203,0	16:40'46.144

13/10/2023

P = Pits In/Out - C = Lap Time Cancelled





ACI Racing Weekend Vallelunga, 14-15 Ottobre 2023

Italian F4 Championship - Chronological Analysis Qualifying 2

3	13.389	35.144	32.570	21.513	1'42.616	201,5	16:42'28.760
4	13.162	33.059	28.754	20.170	1'35.145	212,6	16:44'03.905
5	13.181	33.030	28.595	20.131	1'34.937	211,4	16:45'38.842
6	13.211	32.994	28.653	20.241	1'35.099	211,8	16:47'13.941
7	13.201	33.034	28.629	20.162	1'35.026	211,4	16:48'48.967
8	13.276	36.892	30.340	20.892	1'41.400	163,1	16:50'30.367
9	13.260	32.977	28.680	20.054	1'34.971	211,8	16:52'05.338

86 D. DE LA TORRE RAMIREZ (1'36.329)

Lap	Seg.1	Seg.2	Seg.3	Seg.4	Lap Time	km/h	Local Time
1							16:37'39.215
2	17.918	36.246	30.253	21.051	1'45.468P	198,9	16:39'24.683
3	13.824	33.537	29.185	20.500	1'37.046	208,5	16:41'01.729
4	13.294	33.701	29.078	20.275	1'36.348	212,6	16:42'38.077
5	13.418	33.567	28.891	20.453	1'36.329	208,9	16:44'14.406
6	13.443	33.468	29.124	20.325	1'36.360	209,7	16:45'50.766
7	13.592	33.878	29.099	22.792	1'39.361	210,9	16:47'30.127
8	15.183	36.354	34.040	22.065	1'47.642	194,2	16:49'17.769
9	13.503	33.752	29.085	20.477	1'36.817	211,4	16:50'54.586
10	13.272	33.527	29.246	20.383	1'36.428	210,9	16:52'31.014

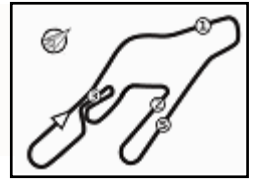
93 M. QUINTARELLI (1'34.120)

Lap	Seg.1	Seg.2	Seg.3	Seg.4	Lap Time	km/h	Local Time
1							16:38'46.518
2	20.440	37.202	31.000	21.606	1'50.248P	189,5	16:40'36.766
3	13.975	33.920	29.369	20.545	1'37.809	207,3	16:42'14.575
4	13.174	32.874	28.708	20.537	1'35.293	211,4	16:43'49.868
5	13.131	32.782	28.457	19.876	1'34.246	211,4	16:45'24.114
6	13.132	32.773	28.338	19.877	1'34.120	212,2	16:46'58.234
7	13.172	32.795	28.411	19.819	1'34.197	213,0	16:48'32.431
8	13.158	32.918	28.429	19.852	1'34.357	211,4	16:50'06.788

94 K. ANURAG (1'34.594)

Lap	Seg.1	Seg.2	Seg.3	Seg.4	Lap Time	km/h	Local Time
1							16:37'43.502
2	18.482	41.550	38.839	23.165	2'02.036P	172,5	16:39'45.538
3	13.520	34.903	31.968	21.334	1'41.725	209,3	16:41'27.263
4	13.313	33.078	28.619	20.055	1'35.065	211,8	16:43'02.328
5	13.100	33.018	28.810	19.995	1'34.923	214,7	16:44'37.251
6	13.204	32.827	28.738	19.957	1'34.726	215,6	16:46'11.977
7	13.214	32.891	30.564	20.226	1'36.895	213,0	16:47'48.872
8	13.215	32.860	28.603	19.916	1'34.594	213,0	16:49'23.466

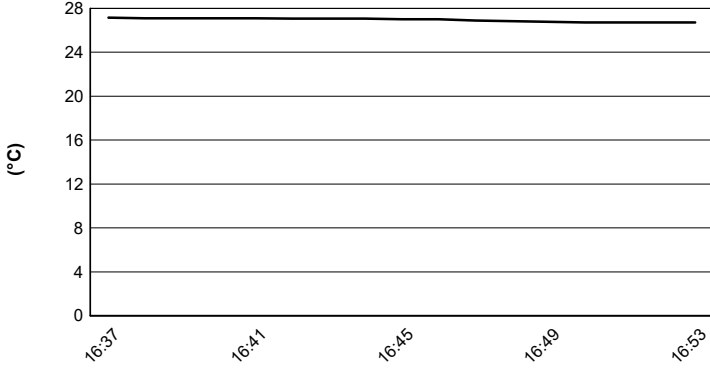




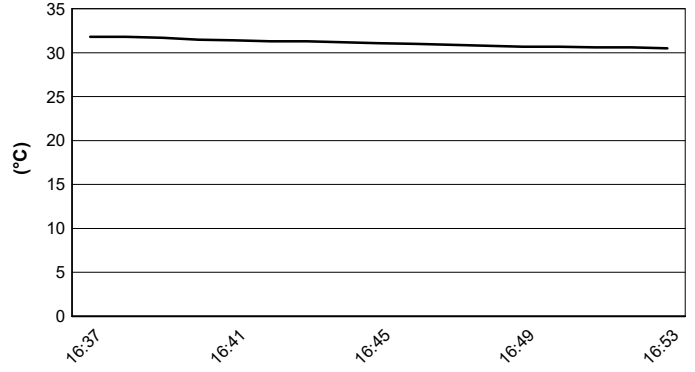
Vallelunga 4.085 m

ACI Racing Weekend Vallelunga, 14-15 Ottobre 2023
Italian F4 Championship - Weather Report Qualifying 2
 Session started 16:37 - Session ended 16:53

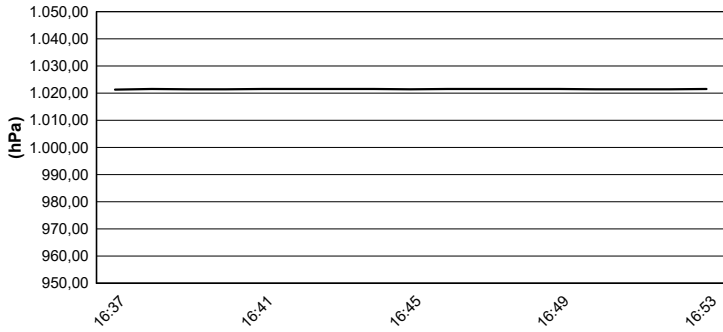
Air Temperature



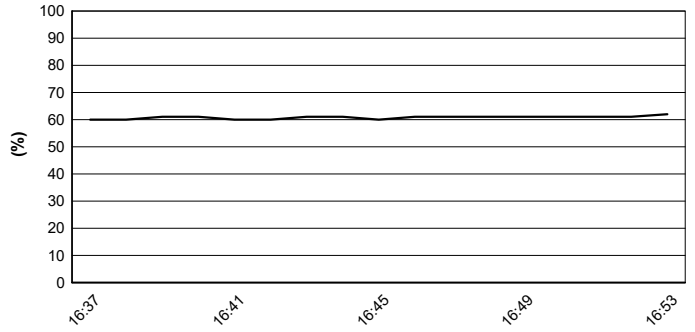
Track Temperature



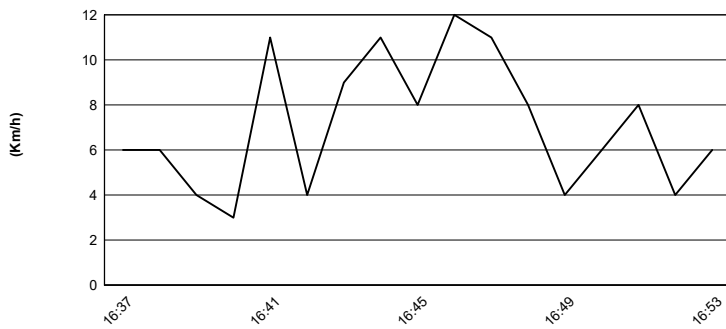
Air Pressure



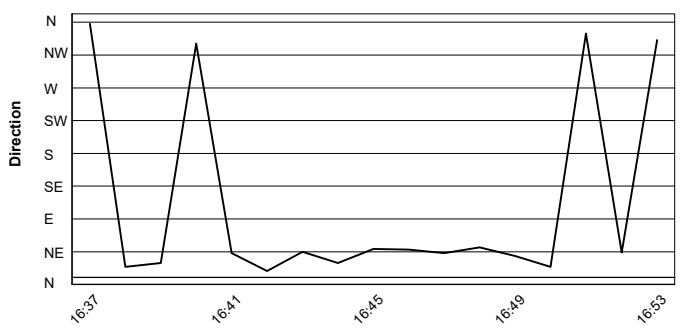
Humidity



Wind Speed

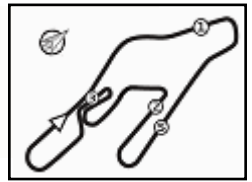


Wind Direction



13/10/2023




ACI Racing Weekend Vallelunga, 14-15 Ottobre 2023
Italian F4 Championship - Results - Second Fastest Lap Qualifying 2

Vallelunga 4.085 m

No. Driver	Nat	Entrant	Team	Car	Class	Time	Gap	Rel. Laps	
1	37 SZTUKA Kacper	POL	US Racing	US Racing (DEU)	Tatuus F4-T421		1'33.555		6
2	8 TAPONEN Tuukka	FIN	Prema Racing	Prema Racing (ITA)	Tatuus F4-T421	R	1'33.718	0.163	0.163 9
3	3 UGOCHUKWU Ugo	USA	Prema Racing	Prema Racing (ITA)	Tatuus F4-T421		1'33.797	0.242	0.079 9
4	15 BADOER Brando	ITA	Van Amersfoort Racing	Van Amersfoort Racing (NLD)	Tatuus F4-T421		1'33.859	0.304	0.062 9
5	80 POWELL Alex	JAM	Prema Racing	Prema Racing (ITA)	Tatuus F4-T421	R	1'33.877	0.322	0.018 9
6	20 DAVID Zachary	MLT	US Racing	US Racing (DEU)	Tatuus F4-T421	R	1'33.986	0.431	0.109 8
7	13 WHARTON James	AUS	Prema Racing	Prema Racing (ITA)	Tatuus F4-T421		1'34.064	0.509	0.078 7
8	31 BOHRA Akshay	SGP	US Racing	US Racing (DEU)	Tatuus F4-T421	R	1'34.072	0.517	0.008 7
9	77 SLATER Freddie	GBR	Van Amersfoort Racing	Van Amersfoort Racing (NLD)	Tatuus F4-T421		1'34.088	0.533	0.016 9
10	23 LINDBLAD Arvid	GBR	Prema Racing	Prema Racing (ITA)	Tatuus F4-T421	R	1'34.171	0.616	0.083 8
11	93 QUINTARELLI Matteo	UAE	R-ace GP	R-ace GP (FRA)	Tatuus F4-T421	R	1'34.197	0.642	0.026 7
12	48 EGOZI James	USA	PHM Racing	PHM Racing (DEU)	Tatuus F4-T421	R	1'34.204	0.649	0.007 8
13	47 LACORTE Nicola	ITA	Prema Racing	Prema Racing (ITA)	Tatuus F4-T421	R	1'34.269	0.714	0.065 9
14	45 BEETON Jack	AUS	Van Amersfoort Racing	Van Amersfoort Racing (NLD)	Tatuus F4-T421	R	1'34.277	0.722	0.008 8
15	29 ELKIN Ariel	ISR	Jenzer Motorsport	Jenzer Motorsport (CHE)	Tatuus F4-T421	R	1'34.301	0.746	0.024 8
16	14 AL DHAHERI Rashid	UAE	Prema Racing	Prema Racing (ITA)	Tatuus F4-T421	R	1'34.310	0.755	0.009 9
17	12 PRADEL Gianmarco	AUS	US Racing	US Racing (DEU)	Tatuus F4-T421	R	1'34.359	0.804	0.049 7
18	7 FERREIRA Matheus	BRA	Van Amersfoort Racing	Van Amersfoort Racing (NLD)	Tatuus F4-T421	R	1'34.388	0.833	0.029 9
19	76 NARAC Raphael	FRA	R-ace GP	R-ace GP (FRA)	Tatuus F4-T421	R	1'34.410	0.855	0.022 8
20	9 SPINA Alfio	ITA	BVM Racing	BVM Racing (ITA)	Tatuus F4-T421		1'34.430	0.875	0.020 9
21	5 LARINI Davide	ITA	PHM Racing	PHM Racing (DEU)	Tatuus F4-T421	R	1'34.622	1.067	0.192 8
22	16 NOBELS Aurelia Corine	BRA	Prema Racing	Prema Racing (ITA)	Tatuus F4-T421		1'34.670	1.115	0.048 9
23	94 ANURAG Kabir	SGP	US Racing	US Racing (DEU)	Tatuus F4-T421	R	1'34.726	1.171	0.056 7
24	66 LIU Ruiqi	CHN	US Racing	US Racing (DEU)	Tatuus F4-T421	R	1'34.734	1.179	0.008 7
25	21 HAUSMANN Tina	CHE	AKM Motorsport	AKM Motorsport (SMR)	Tatuus F4-T421	R	1'34.735	1.180	0.001 9
26	61 WIEBELHAUS Finn	DEU	Jenzer Motorsport	Jenzer Motorsport (CHE)	Tatuus F4-T421	R	1'34.825	1.270	0.090 8
27	24 ZHANG Shimo	CHN	Jenzer Motorsport	Jenzer Motorsport (CHE)	Tatuus F4-T421	R	1'34.831	1.276	0.006 9
28	27 ISCHER Ethan	CHE	Jenzer Motorsport	Jenzer Motorsport (CHE)	Tatuus F4-T421		1'34.838	1.283	0.007 8
29	53 PEDRINI Giacomo	ITA	PHM Racing	PHM Racing (DEU)	Tatuus F4-T421	R	1'34.854	1.299	0.016 7
30	6 MRAD Kamal	AUS	AKM Motorsport	AKM Motorsport (SMR)	Tatuus F4-T421		1'34.939	1.384	0.085 9
31	78 BLOKHINA Viktoria		PHM Racing	PHM Racing (DEU)	Tatuus F4-T421		1'34.967	1.412	0.028 9
32	81 KALENDER Tom	DEU	PHM Racing	PHM Racing (DEU)	Tatuus F4-T421	R	1'34.971	1.416	0.004 8
33	63 LUCHETTI Guido	ITA	Airflow Racing	Airflow Racing (ITA)	Tatuus F4-T421	R	1'35.404	1.849	0.433 9
34	86 DE LA TORRE RAMIREZ Diego	MEX	AKM Motorsport	AKM Motorsport (SMR)	Tatuus F4-T421		1'36.348	2.793	0.944 9

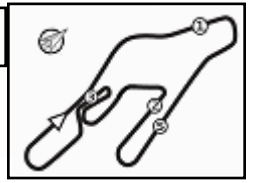
Humidity:	60%	AIR	26°C
Condition:	DRY	Track	31°C

Clerk of the Course : Gianfranco Bonifacio

Race Director : Alessandro Ferrari

	Start	End
13/10/2023	16:37	16:53




ACI Racing Weekend Vallelunga, 14-15 Ottobre 2023
Italian F4 Championship - Best Second Fastest Lap

No.	Driver	Nat	Entrant	Team	Car	Class	Q1	Q2	Time	Gap	Rel.	Laps
1	37 SZTUKA Kacper	POL	US Racing	US Racing	Tatuus F4-T421		1'33.925	1'33.555	1'33.555			14
2	8 TAPONEN Tuukka	FIN	Prema Racing	Prema Racing	Tatuus F4-T421	R	1'34.075	1'33.718	1'33.718	0.163	0.163	18
3	3 UGOCHUKWU Ugo	USA	Prema Racing	Prema Racing	Tatuus F4-T421		1'34.046	1'33.797	1'33.797	0.242	0.079	18
4	15 BADOER Brando	ITA	Van Amersfoort Racing	Van Amersfoort Racing	Tatuus F4-T421		1'34.168	1'33.859	1'33.859	0.304	0.062	18
5	80 POWELL Alex	JAM	Prema Racing	Prema Racing	Tatuus F4-T421	R	1'34.408	1'33.877	1'33.877	0.322	0.018	18
6	20 DAVID Zachary	MLT	US Racing	US Racing	Tatuus F4-T421	R	1'34.270	1'33.986	1'33.986	0.431	0.109	15
7	13 WHARTON James	AUS	Prema Racing	Prema Racing	Tatuus F4-T421		1'34.362	1'34.064	1'34.064	0.509	0.078	15
8	31 BOHRA Akshay	SGP	US Racing	US Racing	Tatuus F4-T421	R	1'34.134	1'34.072	1'34.072	0.517	0.008	15
9	77 SLATER Freddie	GBR	Van Amersfoort Racing	Van Amersfoort Racing	Tatuus F4-T421	R	1'34.562	1'34.088	1'34.088	0.533	0.016	18
10	23 LINDBLAD Arvid	GBR	Prema Racing	Prema Racing	Tatuus F4-T421	R	1'34.284	1'34.171	1'34.171	0.616	0.083	16
11	93 QUINTARELLI Matteo	UAE	R-ace GP	R-ace GP	Tatuus F4-T421	R	1'34.555	1'34.197	1'34.197	0.642	0.026	15
12	48 EGOZI James	USA	PHM Racing	PHM Racing	Tatuus F4-T421	R	1'34.453	1'34.204	1'34.204	0.649	0.007	16
13	47 LACORTE Nicola	ITA	Prema Racing	Prema Racing	Tatuus F4-T421	R	1'34.540	1'34.269	1'34.269	0.714	0.065	17
14	45 BEETON Jack	AUS	Van Amersfoort Racing	Van Amersfoort Racing	Tatuus F4-T421	R	1'34.569	1'34.277	1'34.277	0.722	0.008	17
15	29 ELKIN Ariel	ISR	Jenzer Motorsport	Jenzer Motorsport	Tatuus F4-T421	R	1'34.493	1'34.301	1'34.301	0.746	0.024	17
16	14 AL DHAHERI Rashid	UAE	Prema Racing	Prema Racing	Tatuus F4-T421	R	1'34.646	1'34.310	1'34.310	0.755	0.009	18
17	12 PRADEL Gianmarco	AUS	US Racing	US Racing	Tatuus F4-T421	R	1'34.768	1'34.359	1'34.359	0.804	0.049	15
18	7 FERREIRA Matheus	BRA	Van Amersfoort Racing	Van Amersfoort Racing	Tatuus F4-T421	R	1'34.594	1'34.388	1'34.388	0.833	0.029	18
19	76 NARAC Raphael	FRA	R-ace GP	R-ace GP	Tatuus F4-T421	R	1'34.497	1'34.410	1'34.410	0.855	0.022	16
20	9 SPINA Alfio	ITA	BVM Racing	BVM Racing	Tatuus F4-T421		1'34.858	1'34.430	1'34.430	0.875	0.020	17
21	5 LARINI Davide	ITA	PHM Racing	PHM Racing	Tatuus F4-T421	R	1'34.960	1'34.622	1'34.622	1.067	0.192	16
22	16 NOBELS Aurelia Corine	BRA	Prema Racing	Prema Racing	Tatuus F4-T421		1'34.971	1'34.670	1'34.670	1.115	0.048	18
23	94 ANURAG Kabir	SGP	US Racing	US Racing	Tatuus F4-T421	R	1'35.023	1'34.726	1'34.726	1.171	0.056	15
24	66 LIU Ruiqi	CHN	US Racing	US Racing	Tatuus F4-T421	R	1'34.886	1'34.734	1'34.734	1.179	0.008	15
25	21 HAUSMANN Tina	CHE	AKM Motorsport	AKM Motorsport	Tatuus F4-T421	R	1'35.130	1'34.735	1'34.735	1.180	0.001	18
26	61 WIEBELHAUS Finn	DEU	Jenzer Motorsport	Jenzer Motorsport	Tatuus F4-T421	R	1'35.054	1'34.825	1'34.825	1.270	0.090	16
27	24 ZHANG Shimo	CHN	Jenzer Motorsport	Jenzer Motorsport	Tatuus F4-T421	R	1'35.226	1'34.831	1'34.831	1.276	0.006	18
28	27 ISCHER Ethan	CHE	Jenzer Motorsport	Jenzer Motorsport	Tatuus F4-T421		1'35.180	1'34.838	1'34.838	1.283	0.007	16
29	53 PEDRINI Giacomo	ITA	PHM Racing	PHM Racing	Tatuus F4-T421	R	1'34.994	1'34.854	1'34.854	1.299	0.016	16
30	6 MRAD Kamal	AUS	AKM Motorsport	AKM Motorsport	Tatuus F4-T421		1'35.201	1'34.939	1'34.939	1.384	0.085	18
31	78 BLOKHINA Viktoria		PHM Racing	PHM Racing	Tatuus F4-T421		1'35.272	1'34.967	1'34.967	1.412	0.028	18
32	81 KALENDER Tom	DEU	PHM Racing	PHM Racing	Tatuus F4-T421	R	1'35.439	1'34.971	1'34.971	1.416	0.004	16
33	63 LUCHETTI Guido	ITA	Airflow Racing	Airflow Racing	Tatuus F4-T421	R	1'35.929	1'35.404	1'35.404	1.849	0.433	18
34	86 DE LA TORRE RAMIRE	MEX	AKM Motorsport	AKM Motorsport	Tatuus F4-T421		1'36.372	1'36.348	1'36.348	2.793	0.944	17

Clerk of the Course : Gianfranco Bonifacio

Race Director : Alessandro Ferrari

13/10/2023

