

ACI Racing Weekend Monza, 5-6 Ottobre 2024

Euro4 Championship - Results Collective Test

Autodromo Monza 5.793 m

1 / 2

No.	Driver	Nat	Entrant	Team	Car	Class	Time	Gap	Rel.	Laps
1	6 YAMAKOSHI Hiyu	JPN	Van Amersfoort Racing	Van Amersfoort Racing	Tatuus F4-T421		2'08.061			44
2	80 POWELL Alex	USA	Prema Racing	Prema Racing	Tatuus F4-T421	R	2'08.073	0.012	0.012	38
3	73 OLIVIERI Emanuele	ITA	AKM Motorsport	AKM Motorsport	Tatuus F4-T421	R	2'08.096	0.035	0.023	30
4	51 NAKAMURA-BERTA Kean	JPN	Prema Racing	Prema Racing	Tatuus F4-T421	R	2'08.114	0.053	0.018	39
5	23 FRANCO Reno	NLD	Jenzer Motorsport	Jenzer Motorsport	Tatuus F4-T421		2'08.132	0.071	0.018	45
6	3 POPOV Maksimilian	GRD	PHM AIX Racing	PHM AIX Racing	Tatuus F4-T421	R	2'08.154	0.093	0.022	43
7	27 SLATER Freddie	GBR	Prema Racing	Prema Racing	Tatuus F4-T421		2'08.315	0.254	0.161	38
8	7 SAMMALISTO Luka	FIN	R-ACE GP	R-ACE GP	Tatuus F4-T421	R	2'08.409	0.348	0.094	50
9	9 STACK Everett	USA	PHM AIX Racing	PHM AIX Racing	Tatuus F4-T421		2'08.457	0.396	0.048	44
10	50 GOWDA Dion	IND	Prema Racing	Prema Racing	Tatuus F4-T421		2'08.480	0.419	0.023	38
11	77 YEY Enzo	CHN	R-ACE GP	R-ACE GP	Tatuus F4-T421	R	2'08.603	0.542	0.123	41
12	33 STOLCERMANIS Tomass	LVA	Prema Racing	Prema Racing	Tatuus F4-T421	R	2'08.618	0.557	0.015	40
13	31 BOHRA Akshay	IND	US Racing	US Racing	Tatuus F4-T421		2'08.630	0.569	0.012	41
14	71 REHM Maxim	DEU	US Racing	US Racing	Tatuus F4-T421	R	2'08.646	0.585	0.016	41
15	21 ISCHER Ethan	CHE	Jenzer Motorsport	Jenzer Motorsport	Tatuus F4-T421		2'08.693	0.632	0.047	40
16	4 BUSTAMANTE Bianca	PHL	ART Grand Prix	ART Grand Prix	Tatuus F4-T421		2'08.703	0.642	0.010	31
17	15 ROBINSON Edward	GBR	US Racing	US Racing	Tatuus F4-T421	R	2'08.761	0.700	0.058	34
18	57 NOBELS Aurelia	BRA	ART Grand Prix	ART Grand Prix	Tatuus F4-T421		2'08.783	0.722	0.022	38
19	45 BEETON Jack	AUS	US Racing	US Racing	Tatuus F4-T421		2'08.850	0.789	0.067	36
20	16 LARINI Davide	ITA	PHM AIX Racing	PHM AIX Racing	Tatuus F4-T421		2'08.879	0.818	0.029	46
21	12 PRADEL Gianmarco	AUS	US Racing	US Racing	Tatuus F4-T421		2'09.038	0.977	0.159	39
22	11 VIISOREANU Luca	ROU	Real Racing	Real Racing	Tatuus F4-T421	R	2'09.060	0.999	0.022	64
23	22 FREY Enea	CHE	Jenzer Motorsport	Jenzer Motorsport	Tatuus F4-T421	R	2'09.339	1.278	0.279	39
24	36 JONSSON Gustav	SWE	Van Amersfoort Racing	Van Amersfoort Racing	Tatuus F4-T421		2'09.348	1.287	0.009	43
25	2 SCHWARTZ Hudson	USA	Van Amersfoort Racing	Van Amersfoort Racing	Tatuus F4-T421	R	2'10.227	2.166	0.879	48
26	19 ANURAG Kabir	SGP	US Racing	US Racing	Tatuus F4-T421	R	2'10.386	2.325	0.159	32
27	5 MARCHIANTE Mattia	ITA	AKM Motorsport	AKM Motorsport	Tatuus F4-T421	R	2'10.568	2.507	0.182	35
28	88 HODENIUS Lin	NLD	Van Amersfoort Racing	Van Amersfoort Racing	Tatuus F4-T421		2'10.631	2.570	0.063	46
29	8 KOSTIC Andrija	SRB	Van Amersfoort Racing	Van Amersfoort Racing	Tatuus F4-T421	R	2'11.773	3.712	1.142	43
30	14 AL DHAHERI Rashid	UAE	Prema Racing	Prema Racing	Tatuus F4-T421					0
31	52 SAVINKOV Oleksandr	UKR	AKM Motorsport	AKM Motorsport	Tatuus F4-T421	R				0
32	78 GOMEZ Gabriel	BRA	PHM AIX Racing	PHM AIX Racing	Tatuus F4-T421	R				0

Humidity:	94%	Air	14°C
Condition:	WET	Track	16°C

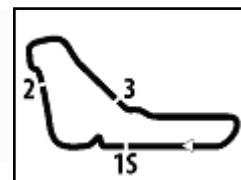
Clerk of the Course : Renato Schmidt

Race Director : Alessandro Ferrari

03/10/2024 Start 14:00 End 17:56

Powered by FICr PERUGIA TIMING





ACI Racing Weekend Monza, 5-6 Ottobre 2024

Euro4 Championship - Results Collective Test

Autodromo Monza 5.793 m

2 / 2

Penalty and Infringement

14.17	RED FLAG
17.29	RED FLAG
17.51	RED FLAG

Fastest Laps Sequence

No.	Entrant	Nat	Team	Car	Local Time	Time	Gap	Avg
11	L. VIISOREANU	ROU	Real Racing	Tatuus F4-T421	14:04'46.628	2'13.768		155,903
23	R. FRANCO	NLD	Jenzer Motorsport	Tatuus F4-T421	14:05'25.856	2'11.411	-2.357	158,699
23	R. FRANCO	NLD	Jenzer Motorsport	Tatuus F4-T421	14:07'36.273	2'10.417	-0.994	159,909
27	F. SLATER	GBR	Prema Racing	Tatuus F4-T421	14:10'53.185	2'10.304	-0.113	160,047
51	K. NAKAMURA-BERTA	JPN	Prema Racing	Tatuus F4-T421	14:12'50.482	2'09.884	-0.420	160,565
4	B. BUSTAMANTE	PHL	ART Grand Prix	Tatuus F4-T421	14:51'00.402	2'09.843	-0.041	160,616
73	E. OLIVIERI	ITA	AKM Motorsport	Tatuus F4-T421	14:59'51.068	2'09.358	-0.485	161,218
4	B. BUSTAMANTE	PHL	ART Grand Prix	Tatuus F4-T421	15:11'41.018	2'09.355	-0.003	161,221
33	T. STOLCERMANIS	LVA	Prema Racing	Tatuus F4-T421	16:13'13.622	2'09.334	-0.021	161,248
27	F. SLATER	GBR	Prema Racing	Tatuus F4-T421	16:13'40.615	2'09.293	-0.041	161,299
51	K. NAKAMURA-BERTA	JPN	Prema Racing	Tatuus F4-T421	16:14'43.150	2'09.129	-0.164	161,504
50	D. GOWDA	IND	Prema Racing	Tatuus F4-T421	16:21'58.854	2'09.056	-0.073	161,595
27	F. SLATER	GBR	Prema Racing	Tatuus F4-T421	16:22'19.818	2'09.045	-0.011	161,609
73	E. OLIVIERI	ITA	AKM Motorsport	Tatuus F4-T421	16:34'14.349	2'08.948	-0.097	161,730
77	E. YEH	CHN	R-ACE GP	Tatuus F4-T421	16:36'40.779	2'08.928	-0.020	161,755
73	E. OLIVIERI	ITA	AKM Motorsport	Tatuus F4-T421	16:38'33.170	2'08.096	-0.832	162,806
6	H. YAMAKOSHI	JPN	Van Amersfoort Racing	Tatuus F4-T421	17:46'21.151	2'08.061	-0.035	162,851

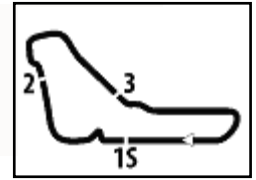
Clerk of the Course : Renato Schmidt

Race Director : Alessandro Ferrari

03/10/2024 Start 14:00 End 17:56

Powered by FICr PERUGIA TIMING





Autodromo Monza 5.793 m

ACI Racing Weekend Monza, 5-6 Ottobre 2024

Euro4 Championship - Best Sectors & Speed Collective Test

BEST LAP

1	6 YAMAKOSHI Hiyu	Tatuus F4-T421	2'08.061
2	80 POWELL Alex	Tatuus F4-T421	2'08.073
3	73 OLIVIERI Emanuele	Tatuus F4-T421	2'08.096
4	51 NAKAMURA-BERTA Kean	Tatuus F4-T421	2'08.114
5	23 FRANCOU Reno	Tatuus F4-T421	2'08.132
6	3 POPOV Maksimilian	Tatuus F4-T421	2'08.154
7	27 SLATER Freddie	Tatuus F4-T421	2'08.315
8	7 SAMMALISTO Luka	Tatuus F4-T421	2'08.409
9	9 STACK Everett	Tatuus F4-T421	2'08.457
10	50 GOWDA Dion	Tatuus F4-T421	2'08.480
11	77 YEH Enzo	Tatuus F4-T421	2'08.603
12	33 STOLCERMANIS Tomass	Tatuus F4-T421	2'08.618
13	31 BOHRA Akshay	Tatuus F4-T421	2'08.630
14	71 REHM Maxim	Tatuus F4-T421	2'08.646
15	21 ISCHER Ethan	Tatuus F4-T421	2'08.693
16	4 BUSTAMANTE Bianca	Tatuus F4-T421	2'08.703
17	15 ROBINSON Edward	Tatuus F4-T421	2'08.761
18	57 NOBELS Aurelia	Tatuus F4-T421	2'08.783
19	45 BEETON Jack	Tatuus F4-T421	2'08.850
20	16 LARINI Davide	Tatuus F4-T421	2'08.879
21	12 PRADEL Gianmarco	Tatuus F4-T421	2'09.038
22	11 VIISOREANU Luca	Tatuus F4-T421	2'09.060
23	22 FREY Enea	Tatuus F4-T421	2'09.339
24	36 JONSSON Gustav	Tatuus F4-T421	2'09.348
25	2 SCHWARTZ Hudson	Tatuus F4-T421	2'10.227
26	19 ANURAG Kabir	Tatuus F4-T421	2'10.386
27	5 MARCHIANTE Mattia	Tatuus F4-T421	2'10.568
28	88 HODENIUS Lin	Tatuus F4-T421	2'10.631
29	8 KOSTIC Andrija	Tatuus F4-T421	2'11.773
30	14 AL DHAHERI Rashid	Tatuus F4-T421	
31	52 SAVINKOV Oleksandr	Tatuus F4-T421	
32	78 GOMEZ Gabriel	Tatuus F4-T421	

SPEED

1	71 REHM Maxim	Tatuus F4-T421	228,8
2	80 POWELL Alex	Tatuus F4-T421	227,8
3	27 SLATER Freddie	Tatuus F4-T421	227,4
4	77 YEH Enzo	Tatuus F4-T421	227,4
5	15 ROBINSON Edward	Tatuus F4-T421	226,9
6	21 ISCHER Ethan	Tatuus F4-T421	226,9
7	33 STOLCERMANIS Tomass	Tatuus F4-T421	226,9
8	11 VIISOREANU Luca	Tatuus F4-T421	226,4
9	73 OLIVIERI Emanuele	Tatuus F4-T421	226,4
10	3 POPOV Maksimilian	Tatuus F4-T421	226,4
11	50 GOWDA Dion	Tatuus F4-T421	225,5
12	31 BOHRA Akshay	Tatuus F4-T421	225,5
13	12 PRADEL Gianmarco	Tatuus F4-T421	225,5
14	23 FRANCOU Reno	Tatuus F4-T421	225,5
15	16 LARINI Davide	Tatuus F4-T421	225,0
16	22 FREY Enea	Tatuus F4-T421	225,0
17	5 MARCHIANTE Mattia	Tatuus F4-T421	225,0
18	7 SAMMALISTO Luka	Tatuus F4-T421	224,5
19	4 BUSTAMANTE Bianca	Tatuus F4-T421	224,5
20	51 NAKAMURA-BERTA Kean	Tatuus F4-T421	224,5
21	57 NOBELS Aurelia	Tatuus F4-T421	224,5
22	6 YAMAKOSHI Hiyu	Tatuus F4-T421	224,5
23	45 BEETON Jack	Tatuus F4-T421	224,1
24	36 JONSSON Gustav	Tatuus F4-T421	224,1
25	19 ANURAG Kabir	Tatuus F4-T421	224,1
26	9 STACK Everett	Tatuus F4-T421	223,6
27	88 HODENIUS Lin	Tatuus F4-T421	222,7
28	8 KOSTIC Andrija	Tatuus F4-T421	222,2
29	2 SCHWARTZ Hudson	Tatuus F4-T421	220,4

SEG. 1

1	71 REHM Maxim	12.039
2	80 POWELL Alex	12.091
3	21 ISCHER Ethan	12.105
4	15 ROBINSON Edward	12.136
5	31 BOHRA Akshay	12.144
6	51 NAKAMURA-BERTA Ke	12.153
7	33 STOLCERMANIS Tomas	12.161
8	27 SLATER Freddie	12.176
9	3 POPOV Maksimilian	12.177
10	11 VIISOREANU Luca	12.186
11	50 GOWDA Dion	12.190
12	45 BEETON Jack	12.191
13	16 LARINI Davide	12.201
14	5 MARCHIANTE Mattia	12.206
15	73 OLIVIERI Emanuele	12.207
16	6 YAMAKOSHI Hiyu	12.233
17	57 NOBELS Aurelia	12.240
18	12 PRADEL Gianmarco	12.242
19	23 FRANCOU Reno	12.245
20	77 YEH Enzo	12.262
21	7 SAMMALISTO Luka	12.267
22	22 FREY Enea	12.271
23	9 STACK Everett	12.273
24	4 BUSTAMANTE Bianca	12.273
25	36 JONSSON Gustav	12.284
26	19 ANURAG Kabir	12.308
27	88 HODENIUS Lin	12.378
28	8 KOSTIC Andrija	12.436
29	2 SCHWARTZ Hudson	12.462

SEG. 2

1	21 ISCHER Ethan	26.152
2	5 MARCHIANTE Mattia	26.737
3	7 SAMMALISTO Luka	26.799
4	4 BUSTAMANTE Bianca	26.873
5	51 NAKAMURA-BERTA Ke	27.287
6	71 REHM Maxim	27.378
7	23 FRANCOU Reno	27.647
8	9 STACK Everett	27.719
9	50 GOWDA Dion	27.752
10	73 OLIVIERI Emanuele	27.878
11	3 POPOV Maksimilian	27.904
12	31 BOHRA Akshay	27.914
13	22 FREY Enea	27.947
14	77 YEH Enzo	27.958
15	15 ROBINSON Edward	28.031
16	36 JONSSON Gustav	28.059
17	27 SLATER Freddie	28.065
18	57 NOBELS Aurelia	28.069
19	6 YAMAKOSHI Hiyu	28.086
20	80 POWELL Alex	28.126
21	33 STOLCERMANIS Tomas	28.153
22	11 VIISOREANU Luca	28.160
23	45 BEETON Jack	28.174
24	88 HODENIUS Lin	28.234
25	12 PRADEL Gianmarco	28.246
26	16 LARINI Davide	28.264
27	8 KOSTIC Andrija	28.351
28	2 SCHWARTZ Hudson	28.489
29	19 ANURAG Kabir	28.550

SEG. 3

1	21 ISCHER Ethan	43.154
2	7 SAMMALISTO Luka	43.322
3	73 OLIVIERI Emanuele	43.360
4	27 SLATER Freddie	43.364
5	6 YAMAKOSHI Hiyu	43.429
6	77 YEH Enzo	43.436
7	80 POWELL Alex	43.448
8	57 NOBELS Aurelia	43.459
9	71 REHM Maxim	43.478
10	31 BOHRA Akshay	43.504
11	16 LARINI Davide	43.517
12	9 STACK Everett	43.526
13	3 POPOV Maksimilian	43.544
14	23 FRANCOU Reno	43.545
15	50 GOWDA Dion	43.647
16	4 BUSTAMANTE Bianca	43.658
17	11 VIISOREANU Luca	43.675
18	12 PRADEL Gianmarco	43.707
19	36 JONSSON Gustav	43.722
20	51 NAKAMURA-BERTA Ke	43.786
21	33 STOLCERMANIS Tomas	43.805
22	45 BEETON Jack	43.818
23	15 ROBINSON Edward	43.907
24	22 FREY Enea	43.926
25	2 SCHWARTZ Hudson	44.020
26	8 KOSTIC Andrija	44.021
27	88 HODENIUS Lin	44.179
28	19 ANURAG Kabir	44.193
29	5 MARCHIANTE Mattia	44.297

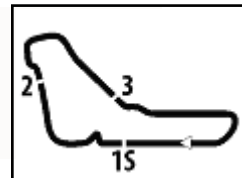
SEG. 4

1	73 OLIVIERI Emanuele	44.083
2	6 YAMAKOSHI Hiyu	44.097
3	27 SLATER Freddie	44.155
4	23 FRANCOU Reno	44.171
5	80 POWELL Alex	44.199
6	7 SAMMALISTO Luka	44.269
7	3 POPOV Maksimilian	44.284
8	45 BEETON Jack	44.287
9	57 NOBELS Aurelia	44.330
10	33 STOLCERMANIS Tomas	44.333
11	4 BUSTAMANTE Bianca	44.366
12	71 REHM Maxim	44.367
13	51 NAKAMURA-BERTA Ke	44.375
14	9 STACK Everett	44.384
15	15 ROBINSON Edward	44.389
16	50 GOWDA Dion	44.429
17	12 PRADEL Gianmarco	44.451
18	22 FREY Enea	44.508
19	16 LARINI Davide	44.549
20	31 BOHRA Akshay	44.554
21	11 VIISOREANU Luca	44.578
22	21 ISCHER Ethan	44.654
23	77 YEH Enzo	44.688
24	36 JONSSON Gustav	44.787
25	2 SCHWARTZ Hudson	44.792
26	19 ANURAG Kabir	45.066
27	88 HODENIUS Lin	45.098
28	5 MARCHIANTE Mattia	45.197
29	8 KOSTIC Andrija	45.384

03/10/2024

Powered by FICR PERUGIA TIMING





ACI Racing Weekend Monza, 5-6 Ottobre 2024

Euro4 Championship - Ideal Time Collective Test

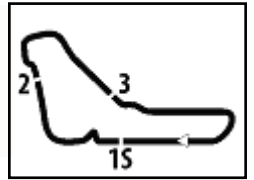
Autodromo Monza 5.793 m

1 / 2

No.	Driver	Car	Seg. 1	Seg. 2	Seg. 3	Seg. 4	Ideal Time		
			Diff. 1	Diff. 2	Diff. 3	Diff. 4	Best Lap	Pos.	Diff.
1	21 ISCHER E. (CHE)	Tatuus F4-T421	12.105 +0.138	26.152 +2.490	43.154	44.654	2'06.065 2'08.693	15	2.628
2	7 SAMMALISTO L. (FIN)	Tatuus F4-T421	12.267 +0.144	26.799 +1.116	43.322 +0.492	44.269	2'06.657 2'08.409	8	1.752
3	4 BUSTAMANTE B. (PHL)	Tatuus F4-T421	12.273 +0.125	26.873 +1.328	43.658	44.366 +0.080	2'07.170 2'08.703	16	1.533
4	71 REHM M. (DEU)	Tatuus F4-T421	12.039 +0.111	27.378 +1.225	43.478	44.367 +0.048	2'07.262 2'08.646	14	1.384
5	73 OLIVIERI E. (ITA)	Tatuus F4-T421	12.207 +0.158	27.878 +0.227	43.360	44.083 +0.183	2'07.528 2'08.096	3	0.568
6	51 NAKAMURA-BERTA K.	Tatuus F4-T421	12.153 +0.017	27.287	43.786 +0.064	44.375 +0.432	2'07.601 2'08.114	4	0.513
7	23 FRANCO R. (NLD)	Tatuus F4-T421	12.245 +0.032	27.647 +0.366	43.545 +0.126	44.171	2'07.608 2'08.132	5	0.524
8	27 SLATER F. (GBR)	Tatuus F4-T421	12.176 +0.183	28.065 +0.122	43.364 +0.183	44.155 +0.067	2'07.760 2'08.315	7	0.555
9	6 YAMAKOSHI H. (JPN)	Tatuus F4-T421	12.233 +0.063	28.086 +0.153	43.429	44.097	2'07.845 2'08.061	1	0.216
10	80 POWELL A. (USA)	Tatuus F4-T421	12.091 +0.106	28.126 +0.103	43.448	44.199	2'07.864 2'08.073	2	0.209
11	9 STACK E. (USA)	Tatuus F4-T421	12.273 +0.099	27.719 +0.456	43.526	44.384	2'07.902 2'08.457	9	0.555
12	3 POPOV M. (GRD)	Tatuus F4-T421	12.177 +0.240	27.904	43.544	44.284 +0.005	2'07.909 2'08.154	6	0.245
13	50 GOWDA D. (IND)	Tatuus F4-T421	12.190	27.752 +0.253	43.647 +0.003	44.429 +0.206	2'08.018 2'08.480	10	0.462
14	57 NOBELS A. (BRA)	Tatuus F4-T421	12.240 +0.078	28.069 +0.309	43.459	44.330 +0.298	2'08.098 2'08.783	18	0.685
15	31 BOHRA A. (IND)	Tatuus F4-T421	12.144 +0.028	27.914 +0.295	43.504 +0.191	44.554	2'08.116 2'08.630	13	0.514
16	77 YEY E. (CHN)	Tatuus F4-T421	12.262 +0.113	27.958 +0.146	43.436	44.688	2'08.344 2'08.603	11	0.259
17	5 MARCHIANTE M. (ITA)	Tatuus F4-T421	12.206 +0.118	26.737 +1.895	44.297	45.197 +0.118	2'08.437 2'10.568	27	2.131
18	33 STOLCERMANIS T. (LVA)	Tatuus F4-T421	12.161 +0.116	28.153 +0.033	43.805 +0.017	44.333	2'08.452 2'08.618	12	0.166
19	15 ROBINSON E. (GBR)	Tatuus F4-T421	12.136 +0.122	28.031 +0.111	43.907 +0.065	44.389	2'08.463 2'08.761	17	0.298
20	45 BEETON J. (AUS)	Tatuus F4-T421	12.191	28.174	43.818 +0.370	44.287 +0.010	2'08.470 2'08.850	19	0.380
21	16 LARINI D. (ITA)	Tatuus F4-T421	12.201 +0.017	28.264 +0.012	43.517 +0.319	44.549	2'08.531 2'08.879	20	0.348
22	11 VIISOREANU L. (ROU)	Tatuus F4-T421	12.186 +0.088	28.160 +0.059	43.675 +0.096	44.578 +0.218	2'08.599 2'09.060	22	0.461
23	12 PRADEL G. (AUS)	Tatuus F4-T421	12.242 +0.122	28.246 +0.198	43.707 +0.072	44.451	2'08.646 2'09.038	21	0.392
24	22 FREY E. (CHE)	Tatuus F4-T421	12.271 +0.132	27.947	43.926 +0.424	44.508 +0.131	2'08.652 2'09.339	23	0.687
25	36 JONSSON G. (SWE)	Tatuus F4-T421	12.284 +0.091	28.059 +0.235	43.722	44.787 +0.170	2'08.852 2'09.348	24	0.496
26	2 SCHWARTZ H. (USA)	Tatuus F4-T421	12.462 +0.048	28.489 +0.123	44.020 +0.132	44.792 +0.161	2'09.763 2'10.227	25	0.464
27	88 HODENIUS L. (NLD)	Tatuus F4-T421	12.378 +0.278	28.234 +0.200	44.179 +0.176	45.098 +0.088	2'09.889 2'10.631	28	0.742
28	19 ANURAG K. (SGP)	Tatuus F4-T421	12.308 +0.007	28.550 +0.048	44.193 +0.099	45.066 +0.115	2'10.117 2'10.386	26	0.269
29	8 KOSTIC A. (SRB)	Tatuus F4-T421	12.436 +0.140	28.351 +0.347	44.021 +0.481	45.384 +0.613	2'10.192 2'11.773	29	1.581
	14 AL DHAHERI R. (UAE)	Tatuus F4-T421							
	52 SAVINKOV O. (UKR)	Tatuus F4-T421							
	78 GOMEZ G. (BRA)	Tatuus F4-T421							
Overall Ideal Time			12.039	26.152	43.154	44.083	2'05.428		

03/10/2024

Powered by FICr PERUGIA TIMING



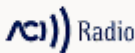
ACI Racing Weekend Monza, 5-6 Ottobre 2024
Euro4 Championship - Ideal Time Collective Test

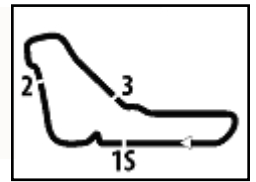
Autodromo Monza 5.793 m
 2 / 2

No. Driver	Car	Seg. 1	Seg. 2	Seg. 3	Seg. 4	Ideal Time		
		Diff. 1	Diff. 2	Diff. 3	Diff. 4	Best Lap	Pos.	Diff.

03/10/2024

Powered by FICr PERUGIA TIMING





ACI Racing Weekend Monza, 5-6 Ottobre 2024

Euro4 Championship - Chronological Analysis Collective Test

Autodromo Monza 5.793 m

2 / 11

28	12.299	30.128	44.118	59.005	2'25.550P	224,5	16:44'47.516	17	12.761	28.816	44.473	44.992	2'11.042	214,7	15:41'15.341
29	40'28.369	29.890	44.863	44.765	42'27.887P	149,8	17:27'15.403	18	12.700	28.351	44.865	45.119	2'11.035	216,4	15:43'26.376
30	12.368	28.323	44.065	9'40.198	11'04.954CP	222,2	17:38'20.357	19	12.627	28.791	44.220	45.091	2'10.729	217,7	15:45'37.105
31	10'12.637	28.802	44.345	45.159	12'10.943P	162,2	17:50'31.300	20	12.676	28.562	43.875	44.873	2'09.986	218,2	15:47'47.091
32	12.273	28.220	44.468	1'35.381	3'00.342CP	223,6	17:53'31.642	21	12.645	28.985	45.367	44.834	2'11.831	218,6	15:49'58.922

5 M. MARCHIANTE (2'10.568)

Lap	Seg.1	Seg.2	Seg.3	Seg.4	Lap Time	km/h	Local Time
1		45.369	58.152	54.339		95,0	
2	13.595	31.471	49.750	52.209	2'27.025	173,9	14:35'50.519
3	13.137	30.251	47.324	50.063	2'20.775	204,2	14:38'11.294
4	13.134	30.409	47.451	48.660	2'19.654	186,9	14:40'30.948
5	12.857	29.641	46.126	1'02.043	2'30.667P	210,5	14:43'01.615
6	3'15.028	32.783	50.283	49.323	5'27.417P	121,8	14:48'29.032
7	12.693	29.381	47.507	47.897	2'17.478	213,0	14:50'46.510
8	12.827	29.441	46.084	48.445	2'16.797	214,3	14:53'03.307
9	12.857	30.275	45.194	47.381	2'15.707	212,2	14:55'19.014
10	12.745	29.149	45.377	46.968	2'14.239	215,6	14:57'33.253
11	12.692	27.839	45.599	46.943	2'13.073	215,6	14:59'46.326
12	12.711	29.367	45.030	46.606	2'13.714	209,7	15:02'00.040
13	12.668	30.504	45.559	47.057	2'15.788	213,4	15:04'15.828
14	12.830	29.423	45.268	59.551	2'27.072P	204,2	15:06'42.900
15	1:01'37.283	39.410	51.333	54.107	1:04'02.133P	142,3	16:10'45.033
16	13.269	29.826	46.753	47.389	2'17.237	200,4	16:13'02.270
17	12.727	27.068	45.843	46.183	2'11.821	215,1	16:15'14.091
18	12.628	29.595	45.423	46.752	2'14.398	216,9	16:17'28.489
19	12.576	29.244	45.095	46.305	2'13.220	216,4	16:19'41.709
20	12.522	28.902	45.115	46.015	2'12.554	217,7	16:21'54.263
21	12.645	29.215	45.169	46.311	2'13.340	216,9	16:24'07.603
22	12.678	29.145	45.052	45.739	2'12.614	217,7	16:26'20.217
23	12.514	28.522	44.537	1'11.411	2'36.984P	219,5	16:28'57.201
24	2'53.421	31.971	50.607	50.997	5'06.996P	165,9	16:34'04.197
25	12.441	27.463	45.014	45.708	2'10.626	219,1	16:36'14.823
26	12.416	28.753	44.386	45.351	2'10.906	220,9	16:38'25.729
27	12.324	28.632	44.297	45.315	2'10.568	220,0	16:40'36.297
28	12.277	26.737	44.906	56.767	2'20.687P	225,0	16:42'56.984
29	40'05.184	31.395	45.843	46.227	4'20.649P	160,7	17:25'05.633
30	12.596	29.319	45.163	45.321	2'12.399	217,3	17:27'18.032
31	12.263	28.762	44.623	45.197	2'10.845	224,1	17:29'28.877
32	12.296	29.501	49.963	1'29.202	3'00.962CP	215,6	17:32'29.839
33	10'15.662	30.750	48.707	47.288	12'22.407P	136,0	17:44'52.246
34	12.330	29.103	44.841	45.292	2'11.566	220,9	17:47'03.812
35	12.206	28.771	52.255	55.110	2'28.342P	223,6	17:49'32.154
36	1'18.076	33.122	48.979	1'26.668	4'06.845CP	184,6	17:53'38.999

7 L. SAMMALISTO (2'08.409)

Lap	Seg.1	Seg.2	Seg.3	Seg.4	Lap Time	km/h	Local Time
1		33.986	49.800	50.342		158,6	
2	14.717	31.359	46.502	47.500	2'20.078	176,5	14:05'54.931
3	13.600	29.399	45.316	46.575	2'14.890	197,8	14:08'09.821
4	13.634	31.517	46.368	47.683	2'19.202	198,9	14:10'29.023
5	13.271	31.973	45.301	45.521	2'16.066	194,2	14:12'45.089
6	12.464	28.476	44.467	46.031	2'11.438	222,7	14:14'56.527
7	12.519	28.353	44.418	45.642	2'10.932	221,3	14:17'07.459
8	12.538	34.481	1'57.223	2'12.787	4'57.029CP	219,1	14:22'04.488
9	9'26.477	29.162	44.935	48.119	11'28.693P	178,8	14:33'33.181
10	12.775	28.538	44.870	47.283	2'13.466	216,0	14:35'46.647
11	12.622	28.696	45.014	46.238	2'12.570	217,7	14:37'59.217
12	12.605	28.531	45.508	46.024	2'12.668	219,1	14:40'11.885
13	12.754	28.790	45.019	54.819	2'21.382P	188,2	14:42'33.267
14	4'07.461	29.741	44.907	46.405	6'08.514P	184,6	14:48'41.781
15	12.608	33.171	44.902	45.512	2'16.193	210,5	14:50'57.974
16	12.592	28.133	44.289	48.236	2'13.250	218,6	14:53'11.224
17	12.488	28.166	44.149	45.155	2'09.958	219,1	14:55'21.182
18	12.588	28.269	45.340	58.474	2'24.671P	218,2	14:57'45.853
19	41'05.122	31.728	46.071	47.232	43'10.153P	171,7	15:40'56.006
20	12.879	28.789	44.742	45.414	2'11.824	215,1	15:43'07.830
21	12.704	28.463	44.514	45.306	2'10.987	217,7	15:45'18.817
22	12.694	28.295	44.932	45.644	2'11.565	218,6	15:47'30.382
23	12.644	28.605	44.720	59.034	2'25.003P	217,3	15:49'55.385
24	2'58.691	29.405	44.375	45.357	4'57.828P	184,6	15:54'53.213
25	12.640	28.248	44.298	45.399	2'10.585	218,2	15:57'03.798
26	12.639	28.275	44.139	45.626	2'10.679	220,9	15:59'14.477
27	12.678	28.306	44.859	49.127	2'14.970	218,2	16:01'29.447
28	12.601	28.429	44.393	45.472	2'10.895	216,4	16:03'40.342
29	12.666	28.468	44.554	44.806	2'10.494	218,6	16:05'50.836
30	12.631	28.153	44.121	47.426	2'12.331	217,3	16:08'03.167
31	12.536	28.328	44.342	45.376	2'10.582	220,9	16:10'13.749
32	12.459	28.075	44.489	44.869	2'09.892	221,3	16:12'23.641

6 H. YAMAKOSHI (2'08.061)

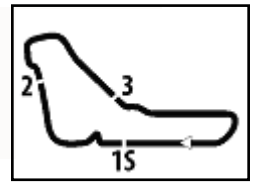
Lap	Seg.1	Seg.2	Seg.3	Seg.4	Lap Time	km/h	Local Time
1		31.290	47.324	55.085		158,8	
2	2'30.601	30.330	44.743	45.978	4'31.652P	146,3	14:07'04.304
3	12.912	28.566	44.198	45.549	2'11.225	202,6	14:09'15.529
4	12.470	28.559	44.477	45.153	2'10.659	216,0	14:11'26.188
5	12.334	28.719	44.619	45.137	2'10.809	222,7	14:13'36.997
6	12.348	29.529	44.358	45.093	2'11.328	222,2	14:15'48.325
7	12.411	28.487	44.406	1'00.772	2'26.076CP	221,8	14:18'14.401
8	12'13.070	29.664	45.175	46.712	14'14.621P	165,6	14:32'29.022
9	12.612	28.540	44.559	46.491	2'12.202	217,7	14:34'41.224
10	12.453	28.782	44.496	45.574	2'11.305	221,3	14:36'52.529
11	12.503	28.528	44.571	45.602	2'11.204	218,2	14:39'03.733
12	12.391	28.804	44.349	45.060	2'10.604	221,8	14:41'14.337
13	12.458	28.617	44.438	54.267	2'19.780P	220,4	14:43'34.117
14	1'07.492	29.205	47.393	45.095	3'09.185P	182,7	14:46'43.302
15	12.484	28.527	44.131	1'01.858	2'27.000P	220,0	14:49'10.302
16	47'51.324	31.370	45.315	45.988	49'53.997P	146,9	15:39'04.299

03/10/2024

P = Pits In/Out - C = Lap Time Cancelled

Powered by FICr PERUGIA TIMING





ACI Racing Weekend Monza, 5-6 Ottobre 2024

Euro4 Championship - Chronological Analysis Collective Test

Autodromo Monza 5.793 m

3 / 11

33	12.522	28.209	44.245	44.838	2'09.814	220,9	16:14'33.455	43	12.525	28.628	45.036	45.869	2'12.058	220,0	17:51'16.169
34	12.529	29.228	44.013	47.816	2'13.586	202,6	16:16'47.041	44	12.441	28.954	1'01.183	1'43.351	3'25.929CP	222,2	17:54'42.098
35	12.474	28.265	44.055	44.693	2'09.487	220,0	16:18'56.528								
36	12.434	28.143	43.994	44.985	2'09.556	220,4	16:21'06.084								
37	12.497	28.196	43.968	44.742	2'09.403	219,1	16:23'15.487								
38	12.478	27.957	43.322	1'03.503	2'27.260P	220,4	16:25'42.747								
39	3'35.460	29.792	44.252	45.511	5'35.015P	182,7	16:31'17.762								
40	12.411	28.178	43.708	44.966	2'09.263	222,7	16:33'27.025								
41	12.437	28.104	44.048	44.977	2'09.566	221,8	16:35'36.591								
42	12.448	28.363	45.331	46.182	2'12.324	221,3	16:37'48.915								
43	12.411	27.915	43.814	44.269	2'08.409	221,8	16:39'57.324								
44	12.269	27.938	44.010	45.311	2'09.528	224,5	16:42'06.852								
45	12.379	28.229	43.702	54.105	2'18.415P	222,2	16:44'25.267								
46	41'30.766	29.232	44.958	44.814	43'29.770P	186,9	17:27'55.037								
47	12.311	28.278	43.334	1'15.615	2'39.538CP	222,7	17:30'34.575								
48	12'54.700	26.799	44.186	44.598	1'45.283P	188,5	17:45'24.858								
49	12.281	27.997	44.548	45.196	2'10.022	223,1	17:47'34.880								
50	12.267	28.608	45.420	55.475	2'21.770P	223,6	17:49'56.650								
51	32.764	29.041	45.048	1'37.925	3'24.778CP	183,1	17:53'21.428								

9 E. STACK (2'08.457)

Lap	Seg.1	Seg.2	Seg.3	Seg.4	Lap Time	km/h	Local Time
1		32.626	48.317	1'00.766	143,6		
2	3'43.850	30.042	45.091	47.028	5'46.011P	166,9	14:09'15.415
3	12.564	29.140	46.024	47.221	2'14.949	198,2	14:11'30.364
4	12.465	28.784	45.201	46.467	2'12.917	218,6	14:13'43.281
5	12.458	27.908	44.999	46.407	2'11.772	219,1	14:15'55.053
6	12.438	29.288	45.114	1'15.696	2'42.536CP	215,6	14:18'37.589
7	13'07.070	29.537	45.046	47.323	15'08.976P	178,5	14:33'46.565
8	12.617	28.823	45.914	46.556	2'13.910	209,3	14:36'00.475
9	12.553	28.596	45.007	47.097	2'13.253	216,0	14:38'13.728
10	12.575	28.940	45.550	46.780	2'13.845	207,3	14:40'27.573
11	12.537	28.859	45.108	47.348	2'13.852	216,0	14:42'41.425
12	12.604	29.105	45.014	46.103	2'12.826	217,7	14:44'54.251
13	12.472	28.812	44.820	46.379	2'12.483	221,3	14:47'06.734
14	12.465	27.719	44.651	55.386	2'20.221P	220,0	14:49'26.955
15	2'59.742	29.670	44.845	46.406	5'00.663P	177,6	14:54'27.618
16	12.527	28.798	45.507	45.846	2'12.678	213,4	14:56'40.296
17	12.513	28.633	44.959	45.796	2'11.901	218,2	14:58'52.197
18	12.450	28.796	45.943	45.785	2'12.974	218,2	15:01'05.171
19	12.555	28.663	44.482	45.731	2'11.431	213,9	15:03'16.602
20	12.467	28.618	44.373	45.444	2'10.902	218,6	15:05'27.504
21	12.487	28.817	44.458	53.951	2'19.713P	220,9	15:07'47.217
22	56'42.986	30.484	45.045	46.076	58'44.591P	175,3	16:06'31.808
23	12.698	29.188	45.051	45.730	2'12.667	211,4	16:08'44.475
24	12.486	28.577	44.902	45.874	2'11.839	215,1	16:10'56.314
25	12.475	28.835	44.939	45.755	2'12.004	216,0	16:13'08.318
26	12.345	29.748	45.993	48.469	2'16.555	221,3	16:15'24.873
27	12.448	28.872	45.010	53.399	2'19.729P	216,9	16:17'44.602
28	4'32.763	29.264	44.265	45.608	6'31.900P	183,1	16:24'16.502
29	12.506	28.677	44.676	45.840	2'11.699	213,9	16:26'28.201
30	12.589	28.864	44.192	45.198	2'10.843	216,4	16:28'39.044
31	12.421	28.696	43.907	45.377	2'10.401	219,5	16:30'49.445
32	12.354	28.493	43.971	44.928	2'09.746	219,5	16:32'59.191
33	12.419	28.404	59.008	54.198	2'34.029P	219,1	16:35'33.220
34	1'52.796	29.007	43.736	44.941	3'50.480P	183,4	16:39'23.700
35	12.305	28.545	43.545	44.830	2'09.225	223,6	16:41'32.925
36	12.372	28.175	43.526	44.384	2'08.457	219,5	16:43'41.382
37	12.328	30.266	45.767	44.621	2'11.982	221,8	16:45'54.364
38	12.385	28.300	43.544	44.643	2'08.872	220,0	16:48'03.236
39	12.381	28.050	46.186	52.965	2'19.582P	219,1	16:50'22.818
40	36'04.669	29.702	44.264	46.588	38'05.223P	182,4	17:28'28.041
41	12.351	28.488	43.876	2'10.962	3'35.677CP	220,9	17:32'03.718
42	11'08.832	34.382	44.694	45.787	13'13.695P	171,2	17:45'17.413
43	12.335	28.346	44.105	44.921	2'09.707	221,3	17:47'27.120
44	12.305	28.209	43.822	44.846	2'09.182	223,1	17:49'36.302
45	12.273	28.026	44.673	45.117	2'10.089	223,6	17:51'46.391

11 L. VIISOREANU (2'09.060)

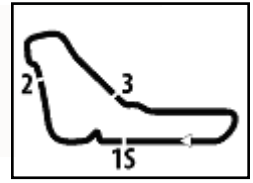
Lap	Seg.1	Seg.2	Seg.3	Seg.4	Lap Time	km/h	Local Time
1		31.187	47.124	46.634	138,6		
2	12.683	29.977	44.955	46.153	2'13.768	216,0	14:04'46.628
3	12.514	28.817	45.437	45.827	2'12.595	211,8	14:06'59.223
4	12.509	29.608	46.092	46.630	2'14.839	200,7	14:09'14.062
5	12.377	34.634	48.235	45.842	2'21.088	207,7	14:11'35.150
6	12.326	30.958	45.263	46.774	2'15.321	224,1	14:13'50.471
7	12.250	29.854	45.304	46.134	2'13.542	224,5	14:16'04.013
8	12.347	28.751	46.353	1'11.020	2'38.471CP	223,1	14:18'42.484
9	12'03.510	33.085	45.472	48.804	14'10.871P	97,1	14:32'53.355
10	12.558	28.633	44.779	46.125	2'12.095	219,5	14:35'05.450

03/10/2024

P = Pits In/Out - C = Lap Time Cancelled

Powered by FICr PERUGIA TIMING





ACI Racing Weekend Monza, 5-6 Ottobre 2024
Euro4 Championship - Chronological Analysis Collective Test

Autodromo Monza 5.793 m

6 / 11

31	12.356	28.163	44.161	45.020	2'09.700	222,2	17:09'12.042	7	12.410	28.789	44.072	45.506	2'10.777	222,2	14:16'21.479
32	12.286	28.565	44.186	45.529	2'10.566	223,1	17:11'22.608	8	12.331	30.204	46.464	57.323	2'26.322CP	220,9	14:18'47.801
33	12.262	28.134	44.215	45.039	2'09.650	223,6	17:13'32.258	9	11'52.011	32.995	47.629	51.327	1'40'03.962P	140,8	14:32'51.763
34	12.360	27.709	44.915	45.303	2'10.287	221,3	17:15'42.545	10	12.527	28.476	44.400	45.377	2'10.780	219,5	14:35'02.543
35	12.325	28.287	44.320	44.950	2'09.882	222,2	17:17'52.427	11	12.339	29.456	44.674	46.815	2'13.284	220,4	14:37'15.827
36	12.319	28.357	43.969	44.758	2'09.403	223,1	17:20'01.830	12	12.422	29.861	44.675	45.816	2'12.774	219,5	14:39'28.601
37	12.288	28.838	43.737	53.806	2'18.669P	222,7	17:22'20.499	13	12.283	28.652	44.689	45.304	2'10.928	218,6	14:41'39.529
38	21'24.354	29.970	44.375	49.257	23'27.956P	165,4	17:45'48.455	14	12.382	28.575	44.354	50.015	2'15.326	213,9	14:43'54.855
39	12.243	28.642	43.154	44.654	2'08.693	225,5	17:47'57.148	15	12.400	36.444	46.041	54.980	2'29.865P	219,1	14:46'24.720
40	12.105	28.125	44.053	46.209	2'10.492	226,9	17:50'07.640	16	53'21.196	31.310	53.330	49.951	55'35.787P	138,8	15:42'00.507
41	12.157	28.099	44.353	1'05.166	2'29.775CP	225,9	17:52'37.415	17	12.424	28.663	44.643	45.742	2'11.472	220,4	15:44'11.979

22 E. FREY (2'09.339)

Lap	Seg.1	Seg.2	Seg.3	Seg.4	Lap Time	km/h	Local Time
1		33.992	50.545	1'29.106		158,6	
2	6'03.517	31.862	46.798	56.372	8'18.549P	175,0	14:12'12.402
3	13.320	31.237	51.577	45.567	2'21.701	175,0	14:14'34.103
4	12.480	28.690	45.960	51.275	2'18.405	201,5	14:16'52.508
5	12.398	33.360	1'44.224	2'11.999	4'41.981CP	220,9	14:21'34.489
6	32'55.262	29.535	45.314	45.792	34'55.903P	162,4	14:56'30.392
7	12.462	28.397	44.105	45.383	2'10.347	220,0	14:58'40.739
8	12.427	31.479	44.519	45.852	2'14.277	221,3	15:00'55.016
9	12.491	28.615	44.476	45.161	2'10.743	220,4	15:03'05.759
10	12.406	28.314	45.627	45.714	2'12.061	220,9	15:05'17.820
11	12.473	28.372	44.460	44.883	2'10.188	220,4	15:07'28.008
12	12.465	30.740	44.589	45.554	2'13.348	220,9	15:09'41.356
13	12.516	28.795	44.656	45.553	2'11.520	219,5	15:11'52.876
14	12.527	28.453	44.944	56.674	2'22.598P	219,1	15:14'15.474
15	37'50.166	32.819	47.578	48.220	39'58.783P	157,4	15:54'14.257
16	14.314	29.168	45.243	45.743	2'14.468	187,8	15:56'28.725
17	12.566	28.852	46.088	50.995	2'18.501	218,2	15:58'47.226
18	12.602	28.535	45.044	45.736	2'11.917	219,1	16:00'59.143
19	12.506	28.639	45.732	45.506	2'12.383	220,4	16:03'11.526
20	12.537	28.451	45.170	50.605	2'16.763	219,5	16:05'28.289
21	12.544	28.354	45.135	1'15.275	2'41.308	219,1	16:08'09.597
22	12.501	28.730	45.104	45.500	2'11.835	219,1	16:10'21.432
23	12.423	31.534	45.236	48.084	2'17.277	222,7	16:12'38.709
24	12.343	28.267	44.388	45.598	2'10.596	224,1	16:14'49.305
25	12.341	28.319	45.447	45.152	2'11.259	222,7	16:17'00.564
26	12.396	28.319	44.390	45.065	2'10.170	221,8	16:19'10.734
27	12.349	28.319	44.215	59.198	2'24.081P	222,7	16:21'34.815
28	43'14.529	32.047	47.090	47.507	45'21.173P	163,9	17:06'55.988
29	12.507	28.671	44.577	46.088	2'11.843	220,4	17:09'07.831
30	12.518	28.602	43.926	45.138	2'10.184	218,6	17:11'18.015
31	12.413	28.009	44.732	44.688	2'09.842	221,8	17:13'27.857
32	12.352	28.527	44.175	44.812	2'09.866	221,3	17:15'37.723
33	12.378	28.252	44.476	44.508	2'09.614	220,9	17:17'47.337
34	12.351	36.217	44.208	56.091	2'28.867P	224,1	17:20'16.204
35	5'04.258	29.309	44.004	45.530	7'03.101P	170,1	17:27'19.305
36	12.371	28.237	44.652	54.729	2'19.989C	222,2	17:29'39.294
37	14.112	1'06.810	1'56.441	2'12.136	5'29.499CP	135,5	17:35'08.793
38	9'58.383	28.690	44.728	49.623	12'01.424P	184,9	17:47'10.217
39	12.403	27.947	44.350	44.639	2'09.339	222,7	17:49'19.556
40	12.343	28.814	46.024	44.640	2'11.821	224,1	17:51'31.377

27 F. SLATER (2'08.315)

Lap	Seg.1	Seg.2	Seg.3	Seg.4	Lap Time	km/h	Local Time
1		31.227	45.749	59.337		147,3	
2	3'37.186	28.672	43.913	44.752	5'34.523P	182,7	14:08'42.881
3	12.375	28.189	43.576	46.164	2'10.304	222,2	14:10'53.185
4	12.325	34.600	44.879	44.960	2'16.764	221,3	14:13'09.949
5	12.304	29.174	43.590	45.035	2'10.103	222,2	14:15'20.052
6	13.064	31.957	46.373	59.194	2'30.588CP	177,6	14:17'50.640
7	14'15.555	29.276	46.972	45.781	16'17.584P	176,8	14:34'08.224
8	12.519	28.716	44.705	46.149	2'12.089	212,6	14:36'20.313
9	12.500	29.316	44.718	46.043	2'12.577	220,4	14:38'32.890
10	12.486	28.700	45.057	54.667	2'20.910P	218,2	14:40'53.800
11	3'38.493	29.450	47.707	45.276	5'40.926P	184,0	14:46'34.726
12	12.436	28.351	44.181	45.477	2'10.445	219,5	14:48'45.171
13	12.343	28.634	44.064	45.502	2'10.543	221,3	14:50'55.714
14	12.350	28.636	46.887	52.956	2'20.829P	220,9	14:53'16.543
15	1'01'03.258	29.430	44.599	45.038	1'03'02.325P	177,6	15:56'18.868
16	12.562	28.643	44.503	45.044	2'10.752	215,6	15:58'29.620
17	12.479	28.648	44.091	45.028	2'10.246	217,3	16:00'39.866
18	12.443	28.363	44.124	45.076	2'10.006	220,0	16:02'49.872
19	12.478	28.776	44.232	44.831	2'10.317	217,7	16:05'00.189
20	12.479	28.517	44.137	44.797	2'09.930	217,7	16:07'10.119
21	12.443	28.405	43.979	44.911	2'09.738	220,0	16:09'19.857

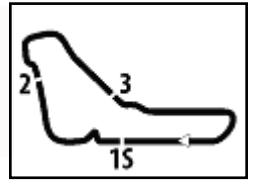
23 R. FRANCO (2'08.132)

Lap	Seg.1	Seg.2	Seg.3	Seg.4	Lap Time	km/h	Local Time
1		34.270	47.834	47.893		158,1	
2	12.668	28.624	44.675	45.444	2'11.411	216,4	14:05'25.856
3	12.546	28.374	44.286	45.211	2'10.417	219,5	14:07'36.273
4	12.482	29.704	44.292	45.761	2'12.239	220,9	14:09'48.512
5	12.354	28.490	44.397	45.631	2'10.872	222,2	14:11'59.384
6	12.451	28.919	44.529	45.419	2'11.318	218,6	14:14'10.702

03/10/2024

P = Pits In/Out - C = Lap Time Cancelled





ACI Racing Weekend Monza, 5-6 Ottobre 2024

Euro4 Championship - Chronological Analysis Collective Test

Autodromo Monza 5.793 m

7 / 11

22	12.334	30.279	44.091	44.761	2'11.465	223,6	16:11'31.322
23	12.176	28.392	43.931	44.794	2'09.293	222,2	16:13'40.615
24	12.462	28.834	44.774	44.959	2'11.029	216,9	16:15'51.644
25	12.363	28.686	43.933	44.545	2'09.527	219,1	16:18'01.171
26	12.318	28.396	44.111	44.777	2'09.602	221,3	16:20'10.773
27	12.367	28.483	43.907	44.288	2'09.045	214,3	16:22'19.818
28	12.433	28.777	44.283	51.826	2'17.319P	214,7	16:24'37.137
29	52'23.465	30.105	49.857	44.821	54'28.248P	176,5	17:19'05.385
30	12.381	28.606	43.967	44.654	2'09.608	220,9	17:21'14.993
31	12.318	28.331	43.832	44.864	2'09.345	222,7	17:23'24.338
32	12.268	28.267	43.710	44.420	2'08.665	224,1	17:25'33.003
33	12.260	28.166	43.779	44.321	2'08.526	227,4	17:27'41.529
34	12.232	28.065	43.364	1'00.272	2'23.933CP	223,1	17:30'05.462
35	11'16.374	28.826	43.953	44.155	13'13.308P	170,1	17:43'18.770
36	12.359	28.187	43.547	44.222	2'08.315	223,6	17:45'27.085
37	12.303	28.214	46.379	44.537	2'11.433	221,3	17:47'38.518
38	12.180	28.098	44.529	54.740	2'19.547P	226,4	17:49'58.065
39	46.847	41.556	59.324	2'04.549	4'32.276CP	184,3	17:54'30.341

33 T. STOLCERMANIS (2'08.618)

Lap	Seg.1	Seg.2	Seg.3	Seg.4	Lap Time	km/h	Local Time
1		30.433	47.132	1'01.139		166,9	
2	3'14.947	29.622	44.428	46.311	5'15.308P	186,2	14:08'13.690
3	12.363	28.510	44.992	45.668	2'11.533	222,2	14:10'25.223
4	12.321	30.440	44.519	45.883	2'13.163	223,1	14:12'38.386
5	12.302	28.865	44.259	45.649	2'11.075	222,7	14:14'49.461
6	12.348	28.514	44.430	45.915	2'11.207	217,7	14:17'00.668
7	12.399	31.926	1'40.107	2'14.729	4'39.161CP	201,1	14:21'39.829
8	8'43.668	29.268	44.617	47.190	10'44.743P	177,3	14:32'24.572
9	12.775	28.754	44.770	46.475	2'12.774	196,7	14:34'37.346
10	12.507	28.691	44.742	46.042	2'11.982	218,2	14:36'49.328
11	12.373	28.613	44.273	46.433	2'11.692	221,8	14:39'01.020
12	12.377	28.874	51.823	47.127	2'20.201	204,5	14:41'21.221
13	12.397	28.465	44.438	45.473	2'10.773	221,8	14:43'31.994
14	12.312	28.605	43.981	46.043	2'10.941	216,9	14:45'42.935
15	12.327	28.575	44.462	53.814	2'19.178P	217,3	14:48'02.113
16	1'05'42.760	29.456	49.127	46.181	1'07'47.524P	173,4	15:55'49.637
17	12.682	28.686	44.291	46.310	2'11.969	216,9	15:58'01.606
18	12.452	28.699	44.254	45.261	2'10.666	220,4	16:00'12.272
19	12.353	28.503	43.909	45.074	2'09.839	220,9	16:02'22.111
20	12.359	28.252	44.421	45.324	2'10.356	221,3	16:04'32.467
21	12.373	28.970	44.690	45.327	2'11.360	211,4	16:06'43.827
22	12.361	28.620	44.449	45.272	2'10.702	216,9	16:08'54.529
23	12.283	28.485	43.975	45.016	2'09.759	222,7	16:11'04.288
24	12.289	28.437	43.903	44.705	2'09.334	225,9	16:13'13.622
25	12.292	28.302	44.059	45.143	2'09.796	223,1	16:15'23.418
26	12.231	28.265	44.423	44.766	2'09.685	221,3	16:17'33.103
27	12.275	28.492	44.151	45.001	2'09.919	220,9	16:19'43.022
28	12.357	28.895	44.437	45.602	2'11.291	208,1	16:21'54.313
29	12.722	28.529	44.013	52.874	2'18.138P	216,4	16:24'12.451
30	52'26.666	32.464	45.526	45.159	54'29.815P	153,0	17:18'42.266
31	12.414	28.347	45.385	44.617	2'10.763	220,9	17:20'53.029
32	12.331	28.419	43.844	44.515	2'09.109	224,1	17:23'02.138
33	12.277	28.186	43.822	44.333	2'08.618	221,8	17:25'10.756
34	12.247	28.405	48.378	46.135	2'15.165	217,3	17:27'25.921
35	12.210	28.257	43.805	44.634	2'08.906C	224,1	17:29'34.827
36	14.579	1'06.331	1'59.160	2'12.719	5'32.789CP	150,0	17:35'07.616
37	6'08.628	29.348	49.779	45.321	8'13.076P	180,9	17:43'20.692
38	12.280	28.504	44.145	45.283	2'10.212	216,4	17:45'30.904
39	12.195	28.328	44.045	45.007	2'09.575	225,0	17:47'40.479
40	12.161	28.155	43.890	44.809	2'09.015	225,0	17:49'49.494
41	12.197	28.153	43.983	44.898	2'09.231C	226,9	17:51'58.725

36 G. JONSSON (2'09.348)

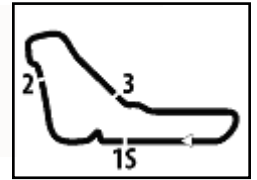
Lap	Seg.1	Seg.2	Seg.3	Seg.4	Lap Time	km/h	Local Time
1		31.457	46.461	57.175		150,0	
2	2'51.430	28.820	44.400	45.883	4'50.533P	163,6	14:07'27.526
3	12.522	28.863	44.749	45.633	2'11.767	219,1	14:09'39.293
4	12.459	28.575	44.114	45.695	2'10.843	220,9	14:11'50.136
5	12.468	28.513	44.501	45.433	2'10.915	220,0	14:14'01.051
6	12.504	30.266	44.303	45.377	2'12.450	220,9	14:16'13.501
7	12.552	28.702	1'05.951	57.899	2'45.104CP	220,0	14:18'58.605
8	11'30.459	29.314	45.192	48.345	13'33.310P	151,5	14:32'31.915
9	12.648	29.081	44.880	46.078	2'12.687	209,3	14:34'44.602
10	12.428	28.456	43.953	45.410	2'10.247	219,1	14:36'54.849
11	12.533	29.194	45.332	45.587	2'12.646	217,7	14:39'07.495
12	12.368	35.763	46.936	45.372	2'20.439	220,4	14:41'27.934
13	12.369	28.449	44.185	45.281	2'10.284	220,9	14:43'38.218
14	12.549	28.558	47.979	45.785	2'14.871	218,2	14:45'53.089
15	12.370	28.900	44.536	47.457	2'13.263	222,7	14:48'06.352
16	12.533	28.625	44.091	45.155	2'10.404	218,2	14:50'16.756
17	12.550	28.408	44.457	52.246	2'17.661P	218,2	14:52'34.417
18	45'06.193	29.140	44.336	45.659	47'05.328P	166,7	15:39'39.745

03/10/2024

P = Pits In/Out - C = Lap Time Cancelled

Powered by FICr PERUGIA TIMING





Autodromo Monza 5.793 m

ACI Racing Weekend Monza, 5-6 Ottobre 2024
Euro4 Championship - Chronological Analysis Collective Test

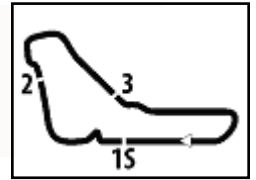
Table with 14 columns (Lap, Seg.1-4, Lap Time, km/h, Local Time) containing race data for driver 50 D. GOWDA (2'08.480). Rows 19-44.

Table with 7 columns (Lap, Seg.1-4, Lap Time, km/h, Local Time) containing race data for driver 45 J. BEETON (2'08.850). Rows 1-15.

Table with 7 columns (Lap, Seg.1-4, Lap Time, km/h, Local Time) containing race data for driver 51 K. NAKAMURA-BERTA (2'08.114). Rows 16-35.

03/10/2024 P = Pits In/Out - C = Lap Time Cancelled





ACI Racing Weekend Monza, 5-6 Ottobre 2024

Euro4 Championship - Chronological Analysis Collective Test

Autodromo Monza 5.793 m

9 / 11

17	12.582	28.544	44.014	45.596	2'10.736	219,1	15:57'20.366	38	12.279	28.069	44.568	45.176	2'10.092	224,5	17:51'20.404
18	12.477	28.150	44.149	45.134	2'09.910	219,5	15:59'30.276	39	12.311	31.476	56.925	1'43.726	3'24.438CP	195,7	17:54'44.842
19	12.388	28.234	45.098	44.840	2'10.560	222,2	16:01'40.836	71 M. REHM (2'08.646)							
20	12.328	28.291	44.789	45.036	2'10.444	220,9	16:03'51.280	Lap	Seg.1	Seg.2	Seg.3	Seg.4	Lap Time	km/h	Local Time
21	12.478	28.694	44.329	45.256	2'10.757	219,5	16:06'02.037	1		29.971	45.593	57.858		183,7	
22	12.531	28.178	44.468	46.194	2'11.371	219,1	16:08'13.408	2	4'25.037	29.075	45.244	46.586	6'25.942P	184,3	14:12'19.638
23	12.476	28.263	44.472	44.693	2'09.904	221,8	16:10'23.312	3	12.482	28.221	45.711	46.003	2'12.417	210,9	14:14'32.055
24	12.327	28.449	44.974	44.959	2'10.709	223,1	16:12'34.021	4	12.476	29.058	45.278	45.362	2'12.174	216,9	14:16'44.229
25	12.403	28.286	43.810	44.630	2'09.129	220,4	16:14'43.150	5	12.481	30.925	1'19.235	1'28.887	3'31.528CP	220,9	14:20'15.757
26	12.357	28.326	44.048	44.759	2'09.490	221,3	16:16'52.640	6	11'53.762	29.654	45.923	47.091	13'56.430P	180,9	14:34'12.187
27	12.274	28.244	44.504	44.734	2'09.756	220,9	16:19'02.396	7	12.671	28.594	46.214	46.687	2'14.166	215,6	14:36'26.353
28	12.364	28.168	43.786	45.091	2'09.409	221,8	16:21'11.805	8	12.586	29.642	45.192	45.998	2'13.418	203,0	14:38'39.771
29	12.354	28.199	43.913	53.470	2'17.936P	222,7	16:23'29.741	9	12.448	29.322	43.513	46.692	2'11.975	212,2	14:40'51.746
30	53'22.563	30.003	44.729	46.428	55'23.723P	160,5	17:18'53.464	10	12.550	29.199	45.385	46.087	2'13.221	208,9	14:43'04.967
31	12.471	28.653	44.683	45.173	2'10.980	219,5	17:21'04.444	11	12.503	29.828	44.801	45.820	2'12.952	221,8	14:45'17.919
32	12.285	28.237	44.563	44.976	2'10.061	217,3	17:23'14.505	12	12.521	28.960	45.029	45.442	2'11.952	204,9	14:47'39.871
33	12.396	29.022	45.181	45.198	2'11.797	220,4	17:25'26.302	13	12.429	29.056	45.116	45.423	2'12.024	217,7	14:49'41.895
34	12.320	28.420	44.718	46.467	2'11.925	224,1	17:27'38.227	14	12.494	27.378	45.028	45.429	2'10.329	220,0	14:51'52.224
35	12.231	28.258	43.894	1'00.746	2'25.129CP	224,1	17:30'03.356	15	12.412	28.853	44.987	45.868	2'12.120	216,0	14:54'04.344
36	11'15.276	29.484	44.626	44.375	13'13.761P	175,3	17:43'17.117	16	12.418	29.002	44.870	45.477	2'11.767	210,1	14:56'16.111
37	12.406	28.742	43.917	44.635	2'09.700	221,3	17:45'26.817	17	12.489	28.960	48.108	46.850	2'16.407	218,2	14:58'32.518
38	12.153	28.004	44.186	44.706	2'09.049	224,5	17:47'35.866	18	12.598	28.955	45.037	55.766	2'22.356P	213,0	15:00'54.874
39	12.170	27.287	43.850	44.807	2'08.114	224,5	17:49'43.980	19	59'18.967	29.945	46.417	1'01.816	1'01'37.145P	171,4	16:02'32.019
40	12.218	28.949	44.224	47.314	2'12.705C	220,4	17:51'56.685	20	49.684	29.833	45.034	45.947	2'50.498P	179,7	16:05'22.517

57 A. NOBELS (2'08.783)

Lap	Seg.1	Seg.2	Seg.3	Seg.4	Lap Time	km/h	Local Time
1		38.452	57.616	1'08.347		105,1	
2	4'10.140	34.862	50.546	50.238	6'25.786P	113,6	14:40'08.862
3	13.702	31.881	48.168	49.052	2'22.803	178,8	14:42'31.665
4	12.923	29.196	46.259	47.732	2'16.110	211,4	14:44'47.775
5	12.769	29.098	45.671	47.045	2'14.583	214,7	14:47'02.358
6	12.740	29.306	46.074	49.644	2'17.764	214,7	14:49'20.122
7	12.768	29.737	45.733	46.424	2'14.662	215,6	14:51'34.784
8	12.681	29.173	45.241	46.059	2'13.154	212,2	14:53'47.938
9	12.560	28.777	44.911	45.828	2'12.076	219,1	14:56'00.014
10	12.605	28.838	44.979	56.636	2'23.058P	215,6	14:58'23.072
11	10'04.132	34.137	47.974	48.384	12'14.627P	121,9	15:10'37.699
12	12.799	29.045	45.263	45.922	2'13.029	199,6	15:12'50.728
13	12.699	28.802	44.859	45.908	2'12.268	214,3	15:15'02.996
14	12.762	29.093	44.919	45.933	2'12.707	210,1	15:17'15.703
15	12.733	28.797	44.668	45.553	2'11.751	211,4	15:19'27.454
16	12.712	28.667	45.033	45.653	2'12.065	213,9	15:21'39.519
17	12.730	28.700	44.534	45.254	2'11.218	214,3	15:23'50.737
18	12.701	28.534	45.101	16'40.346	18'06.682P	213,9	15:41'57.419
19	43'57.981	38.487	51.204	50.717	46'18.389P	101,5	16:28'15.808
20	13.487	29.857	45.015	45.893	2'14.252	177,3	16:30'30.060
21	12.708	29.039	44.587	45.645	2'11.979	214,3	16:32'42.039
22	12.593	28.825	44.480	45.535	2'11.433	215,6	16:34'53.472
23	12.488	28.488	44.845	45.279	2'11.100	219,1	16:37'04.572
24	12.487	28.513	44.051	44.719	2'09.770	219,5	16:39'14.342
25	12.401	28.311	44.135	44.458	2'09.305	220,4	16:41'23.647
26	12.420	28.307	43.730	44.330	2'08.787	220,4	16:43'32.434
27	12.455	28.251	1'13.363	56.740	2'50.809P	220,9	16:46'23.243
28	29'04.623	34.758	49.836	48.718	31'17.935P	117,5	17:17'41.178
29	12.441	28.706	44.953	45.343	2'11.443	213,4	17:19'52.621
30	12.419	28.442	44.201	45.097	2'10.159	219,1	17:22'02.780
31	12.388	28.670	44.081	44.724	2'09.863	220,9	17:24'12.643
32	12.357	28.081	53.857	45.958	2'20.253	220,0	17:26'32.896
33	12.318	28.378	43.459	44.628	2'08.783	222,7	17:28'41.679
34	12.240	28.342	47.348	1'59.614	3'27.544CP	221,8	17:32'09.223
35	10'35.052	30.933	46.543	45.794	12'38.322P	149,4	17:44'47.545
36	12.273	28.497	44.025	44.682	2'09.477	223,6	17:46'57.022
37	12.298	28.584	47.485	44.923	2'13.290	199,6	17:49'10.312

73 E. OLIVIERI (2'08.096)

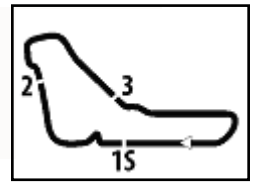
Lap	Seg.1	Seg.2	Seg.3	Seg.4	Lap Time	km/h	Local Time
1		30.059	46.257	48.074		161,4	
2	12.836	29.380	45.015	46.270	2'13.501	199,6	14:34'56.318
3	12.606	28.718	45.065	45.864	2'12.253	212,2	14:37'08.571
4	12.626	28.753	45.314	46.358	2'13.051	212,6	14:39'21.622
5	12.697	29.008	45.385	49.468	2'16.558	213,9	14:41'38.180
6	12.626	28.963	44.442	45.687	2'11.718	215,6	14:43'49.898
7	12.669	28.881	44.712	45.533	2'11.795	217,7	14:46'01.693
8	12.629	28.523	46.482	59.282	2'26.916P	215,6	14:48'28.609
9	2'49.024	30.312	46.430	46.807	4'52.573P	177,3	14:53'21.182
10	12.497	28.410	44.657	44.766	2'10.330	219,5	14:55'31.512
11	12.520	28.763	44.288	44.627	2'10.198	216,9	14:57'41.710
12	12.488	28.455	44.063	44.352	2'09.358	220,0	14:59'51.068
13	12.417	28.446	44.054	44.642	2'09.559	219,5	15:02'00.627

03/10/2024

P = Pits In/Out - C = Lap Time Cancelled

Powered by FICr PERUGIA TIMING





Autodromo Monza 5.793 m

ACI Racing Weekend Monza, 5-6 Ottobre 2024

Euro4 Championship - Chronological Analysis Collective Test

10 / 11

14	12.529	29.517	45.038	52.639	2'19.723P	209,3	15:04'20.350
15	1:21'26.104	29.759	44.871	45.013	1:23'25.747P	175,6	16:27'46.097
16	12.617	28.511	44.368	44.408	2'09.904	217,7	16:29'56.001
17	12.463	28.505	44.162	44.270	2'09.400	220,4	16:32'05.401
18	12.451	28.086	43.953	44.458	2'08.948	221,8	16:34'14.349
19	12.388	28.722	44.209	45.406	2'10.725	219,5	16:36'25.074
20	12.365	28.105	43.360	44.266	2'08.096	220,0	16:38'33.170
21	12.318	28.033	45.177	53.324	2'18.852P	223,6	16:40'52.022
22	5'22.934	28.497	43.558	44.260	7'19.249P	185,2	16:48'11.271
23	12.292	28.211	44.526	44.083	2'09.112	222,2	16:50'20.383
24	12.390	27.939	43.907	44.344	2'08.580	219,1	16:52'28.963
25	12.357	28.290	45.252	48.019	2'13.918	224,1	16:54'42.881
26	12.355	28.241	43.872	44.315	2'08.783	222,7	16:56'51.664
27	12.379	28.264	44.357	52.003	2'17.003P	220,9	16:59'08.667
28	44'33.178	29.279	44.257	46.375	46'33.089P	177,3	17:45'41.756
29	12.210	27.878	44.584	45.128	2'09.800	226,4	17:47'51.556
30	12.207	28.810	44.452	46.739	2'12.208	225,0	17:50'03.764
31	12.226	28.279	44.866	1'03.576	2'28.947CP	225,0	17:52'32.711

80 A. POWELL (2'08.073)

Lap	Seg.1	Seg.2	Seg.3	Seg.4	Lap Time	km/h	Local Time
1		32.112	46.640	1'00.587		159,1	
2	3'12.536	29.267	44.389	45.985	5'12.177P	179,4	14:08'22.688
3	12.449	28.917	44.996	46.122	2'12.484	211,4	14:10'35.172
4	12.579	29.012	45.751	46.156	2'13.498	219,1	14:12'48.670
5	12.687	35.830	46.252	46.582	2'21.351	189,1	14:15'10.021
6	12.449	29.037	45.054	58.333	2'24.873CP	214,3	14:17'34.894
7	12'52.155	29.216	44.580	46.230	14'52.181P	175,9	14:32'27.075
8	12.698	28.735	44.401	46.179	2'12.013	209,3	14:34'39.088
9	12.453	28.924	44.555	50.682	2'16.614	216,4	14:36'55.702
10	12.974	31.643	46.551	46.271	2'17.439	217,7	14:39'13.141
11	12.321	28.685	44.817	45.993	2'11.816	223,1	14:41'24.957
12	12.283	28.856	44.286	45.924	2'11.349	223,1	14:43'36.306
13	12.303	28.684	44.254	45.828	2'11.069	216,0	14:45'47.375
14	12.280	29.586	44.602	55.282	2'21.750P	221,8	14:48'09.125
15	1:05'06.984	30.041	44.840	45.497	1:07'07.362P	175,3	15:55'16.487
16	12.461	28.456	50.634	46.123	2'17.674	220,9	15:57'34.161
17	12.433	28.704	43.942	45.472	2'10.551	222,2	15:59'44.712
18	12.388	28.230	44.183	45.476	2'10.277	221,8	16:01'54.989
19	12.377	28.754	44.362	45.951	2'11.444	220,9	16:04'06.433
20	12.440	29.213	47.624	50.067	2'19.344	210,5	16:06'25.777
21	12.606	28.882	44.403	45.560	2'11.451	214,3	16:08'37.228
22	12.379	28.468	44.109	45.469	2'10.425	219,1	16:10'47.653
23	12.350	28.226	44.674	45.257	2'10.507	211,4	16:12'58.160
24	12.404	28.626	43.972	45.047	2'10.049	220,0	16:15'08.209
25	12.295	28.891	44.539	45.207	2'10.932	221,8	16:17'19.141
26	12.425	28.408	44.125	45.084	2'10.042	220,4	16:19'29.183
27	12.343	29.810	44.059	45.083	2'11.295	222,2	16:21'40.478
28	12.322	28.503	44.183	54.034	2'19.042P	213,9	16:23'59.520
29	52'57.730	30.641	45.948	45.734	55'00.053P	173,9	17:18'59.573
30	12.392	28.931	44.056	44.642	2'10.021	220,9	17:21'09.594
31	12.328	28.370	43.877	44.682	2'09.257	223,6	17:23'18.851
32	12.212	28.195	43.652	44.892	2'08.951	227,4	17:25'27.802
33	12.294	28.427	51.092	52.026	2'23.839	221,3	17:27'51.641
34	12.310	28.215	43.492	58.823	2'22.840CP	224,1	17:30'14.481
35	1'10'06.696	30.335	44.443	45.514	13'06.988P	181,8	17:43'21.469
36	12.353	28.594	45.247	46.642	2'12.836	202,6	17:45'34.305
37	12.197	28.229	43.448	44.199	2'08.073	227,8	17:47'42.378
38	12.091	28.161	44.531	45.351	2'10.134	227,4	17:49'52.512
39	12.209	28.126	44.185	57.622	2'22.142CP	225,5	17:52'14.654

88 L. HODENIUS (2'10.631)

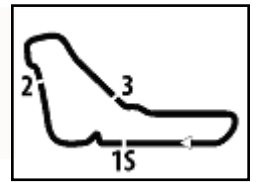
Lap	Seg.1	Seg.2	Seg.3	Seg.4	Lap Time	km/h	Local Time
1		32.503	50.233	56.735		131,5	
2	2'44.560	30.830	46.177	47.809	4'49.376P	184,3	14:07'35.221
3	12.674	31.585	45.795	46.980	2'17.034	206,9	14:09'52.255
4	12.501	29.439	44.845	47.832	2'14.617	212,6	14:12'06.872
5	12.547	29.055	44.667	45.814	2'12.083	219,1	14:14'18.955
6	12.540	28.534	44.877	45.550	2'11.501	219,5	14:16'30.456
7	12.546	29.258	50.401	1'01.033	2'33.238CP	219,5	14:19'03.694
8	12'06.248	30.416	47.934	47.041	14'11.639P	161,2	14:33'15.333
9	12.735	29.139	44.692	45.964	2'12.530	214,7	14:35'27.863
10	12.618	29.118	45.264	45.448	2'12.448	218,2	14:37'40.311
11	12.642	28.742	45.721	46.625	2'13.730	203,8	14:39'54.041
12	12.568	28.579	45.246	45.302	2'11.695	218,2	14:42'05.736
13	12.575	28.857	45.013	45.178	2'11.623	218,6	14:44'17.359
14	12.533	28.954	44.858	45.289	2'11.634	220,0	14:46'28.993
15	12.591	28.411	44.419	45.656	2'11.077	217,3	14:48'40.070
16	12.545	28.693	44.464	45.375	2'11.077	219,5	14:50'51.147
17	12.513	28.569	44.518	54.005	2'19.605P	220,0	14:53'10.752
18	46'22.244	31.148	47.586	46.707	48'27.685P	125,9	15:41'38.437
19	12.845	28.928	44.616	45.515	2'11.904	214,7	15:43'50.341
20	12.808	28.763	44.231	45.623	2'11.425	215,6	15:46'01.766

03/10/2024

P = Pits In/Out - C = Lap Time Cancelled

Powered by FICr PERUGIA TIMING





ACI Racing Weekend Monza, 5-6 Ottobre 2024

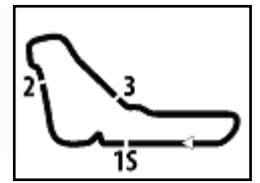
Euro4 Championship - Chronological Analysis Collective Test

Autodromo Monza 5.793 m

11 / 11

21	12.656	28.434	44.355	45.186	2'10.631	217,7	15:48'12.397
22	12.672	28.602	46.652	45.367	2'13.293	216,9	15:50'25.690
23	12.741	28.927	44.179	45.362	2'11.209	216,4	15:52'36.899
24	12.617	29.582	44.530	45.434	2'12.163	218,2	15:54'49.062
25	12.677	28.493	44.361	46.513	2'12.044	217,3	15:57'01.106
26	12.631	29.173	44.529	45.301	2'11.634	218,2	15:59'12.740
27	12.653	28.473	45.273	53.179	2'19.578P	217,7	16:01'32.318
28	2'27.060	32.639	50.138	47.893	4'37.730P	183,1	16:06'10.048
29	12.603	28.810	45.188	46.359	2'12.960	219,5	16:08'23.008
30	12.655	28.425	44.783	45.241	2'11.104	218,6	16:10'34.112
31	12.579	28.821	44.516	45.126	2'11.042	218,6	16:12'45.154
32	12.646	28.630	45.056	45.592	2'11.924	218,2	16:14'57.078
33	12.544	28.448	44.579	45.490	2'11.061	219,5	16:17'08.139
34	13.112	31.091	53.287	1'03.179	2'40.669P	188,8	16:19'48.808
35	44'45.333	33.830	54.581	48.199	47'01.943P	141,4	17:06'50.751
36	12.616	28.983	48.673	45.531	2'15.803	218,2	17:09'06.554
37	12.595	29.153	44.988	55.078	2'21.814P	218,2	17:11'28.368
38	2'43.074	29.480	45.627	46.074	4'44.255P	171,4	17:16'12.623
39	12.554	30.556	44.994	45.712	2'13.816	219,5	17:18'26.439
40	12.607	28.775	44.658	45.559	2'11.599	218,6	17:20'38.038
41	12.605	28.510	44.606	45.316	2'11.037	219,1	17:22'49.075
42	12.585	29.027	49.863	55.378	2'26.853P	218,6	17:25'15.928
43	17'20.080	29.697	44.539	45.098	19'19.414P	182,4	17:44'35.342
44	12.411	29.062	44.601	45.186	2'11.260	221,8	17:46'46.602
45	12.472	28.234	44.992	45.233	2'10.931	221,8	17:48'57.533
46	12.398	28.913	47.073	48.030	2'16.414	222,7	17:51'13.947
47	12.378	29.184	53.122	1'51.376	3'26.060CP	222,7	17:54'40.007

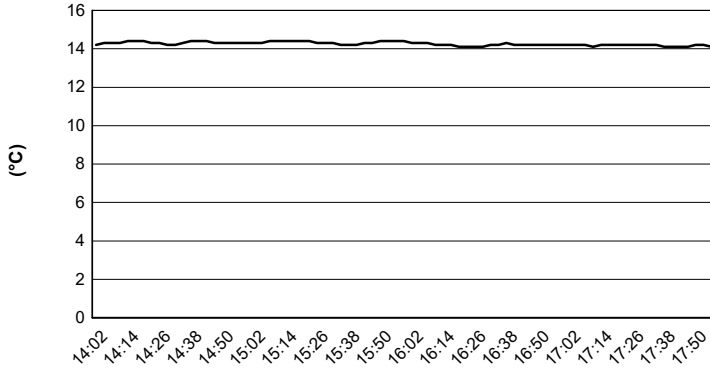




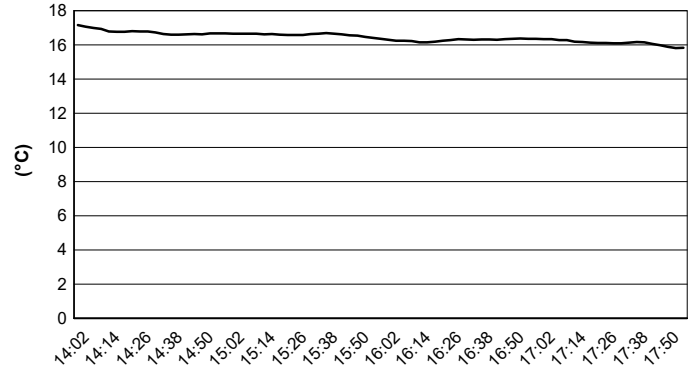
Autodromo Monza 5.793 m

ACI Racing Weekend Monza, 5-6 Ottobre 2024
Euro4 Championship - Weather Report Collective Test
Session started 14:00 - Session ended 17:56

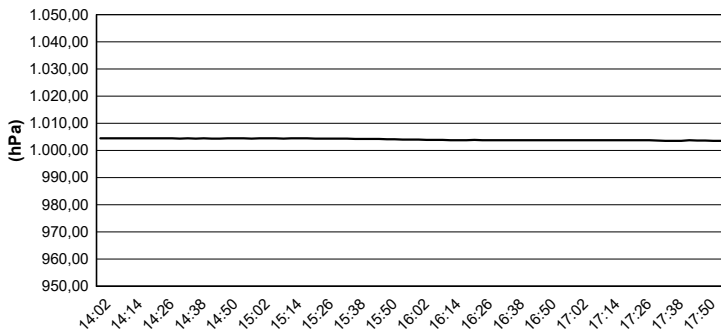
Air Temperature



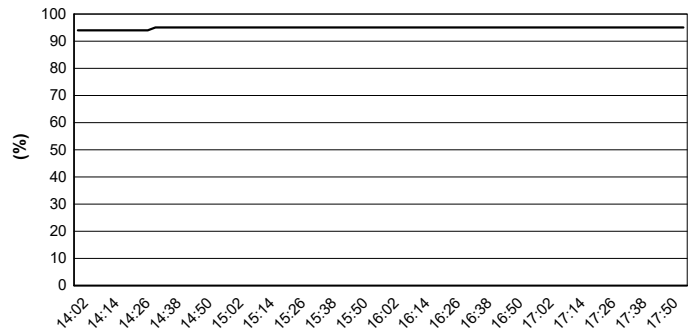
Track Temperature



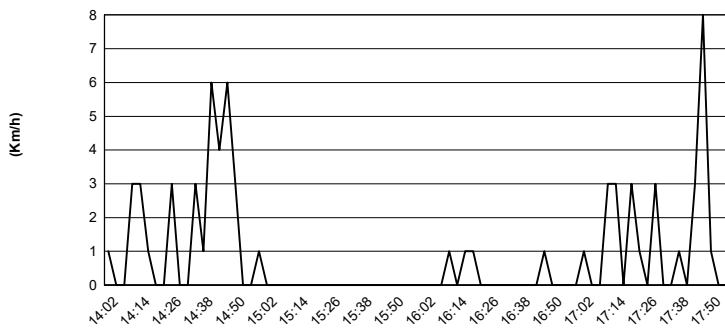
Air Pressure



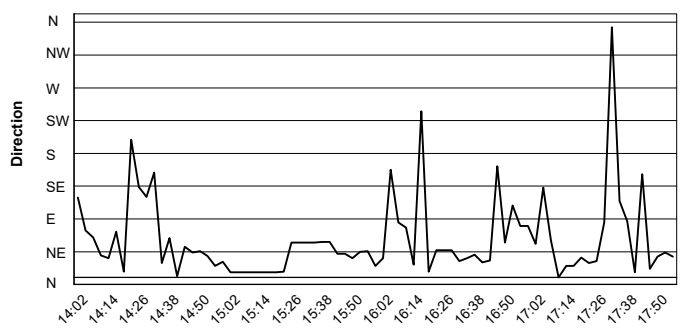
Humidity



Wind Speed



Wind Direction



03/10/2024

